



## **XII Ländler ... : 8tes Werk**

<https://hdl.handle.net/1874/214495>

13

XII

LÄNDLER

für den

Esakan

mit BEGLEITUNG des PIANOFORTE

COMPONIRT VON

ERNEST KRÄHMER

8tes Werk.

N<sup>o</sup> 1489.

WIEN,

Pr: fl 1 — Conv: M:

bey A. DIABELLI und COMP:

Graben N<sup>o</sup> 1133.

N<sup>o</sup> 13.

2

C S A K A N .

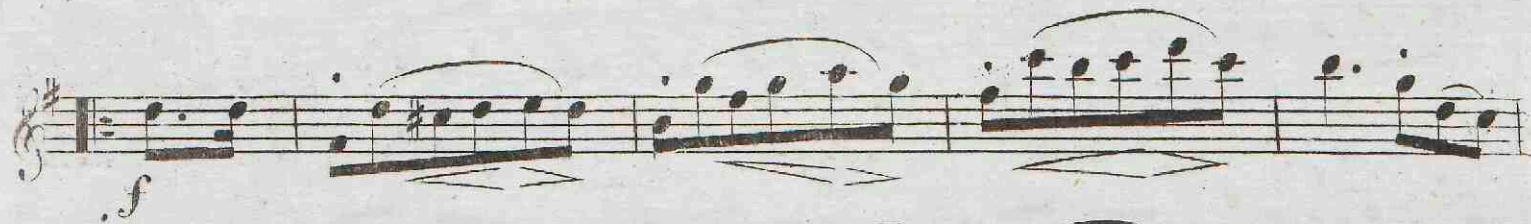
Tempo moderato.

N<sup>o</sup> 1.  *mf*  *p dolce*  *f* 

N<sup>o</sup> 2.  *p*  *f*  *f* *trm.*  *trm.*

N<sup>o</sup> 3.  *f* 

C S A K A N :



C S A K A N .

Nº 6. *p*

*f*

*ff*

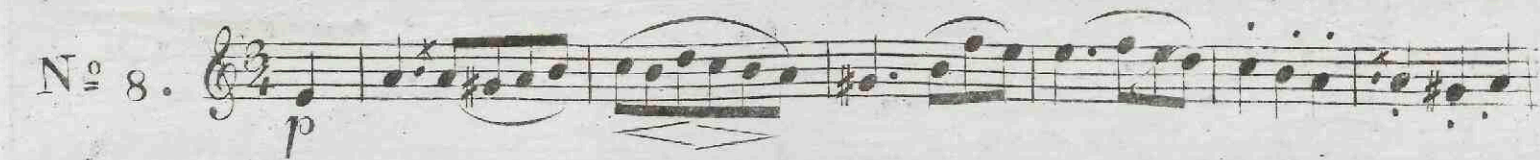
Nº 7. *p*

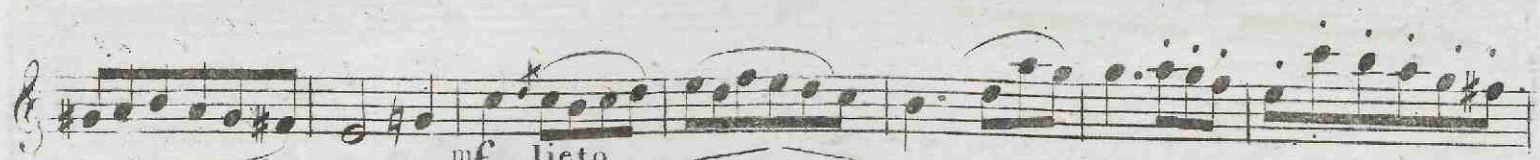
*f*


*mf*


*dolce*


C S A K A N .


N<sup>o</sup> 8.   
*p*

  
*mf* lieto

  
*p*

  
*f* *p* dolce

  
*f*

  
*f*

N<sup>o</sup> 9.   
*f*

  
*f*

  
*f* *tr*

  
*f*

  
*f*

C S A K A N .

N<sup>o</sup> 10. *p* *truu*

N<sup>o</sup> 11. *f*

N<sup>o</sup> 12. *p* *dolce*

C S A K A N .

*f* *crescendo* = = = = =  
= = = = = *ff* *p*  
*mf* *f*  
*marcato*  
*crescendo* = = = = =  
*ff* **FINE.**