



Topographische kaart van Bonaire

<https://hdl.handle.net/1874/258744>

TOPOGRAPHISCHE KAART

VAN

BONAIRE

IN 10 BLADEN.

SCHAAL 1:20000.

BLADWIJZER.



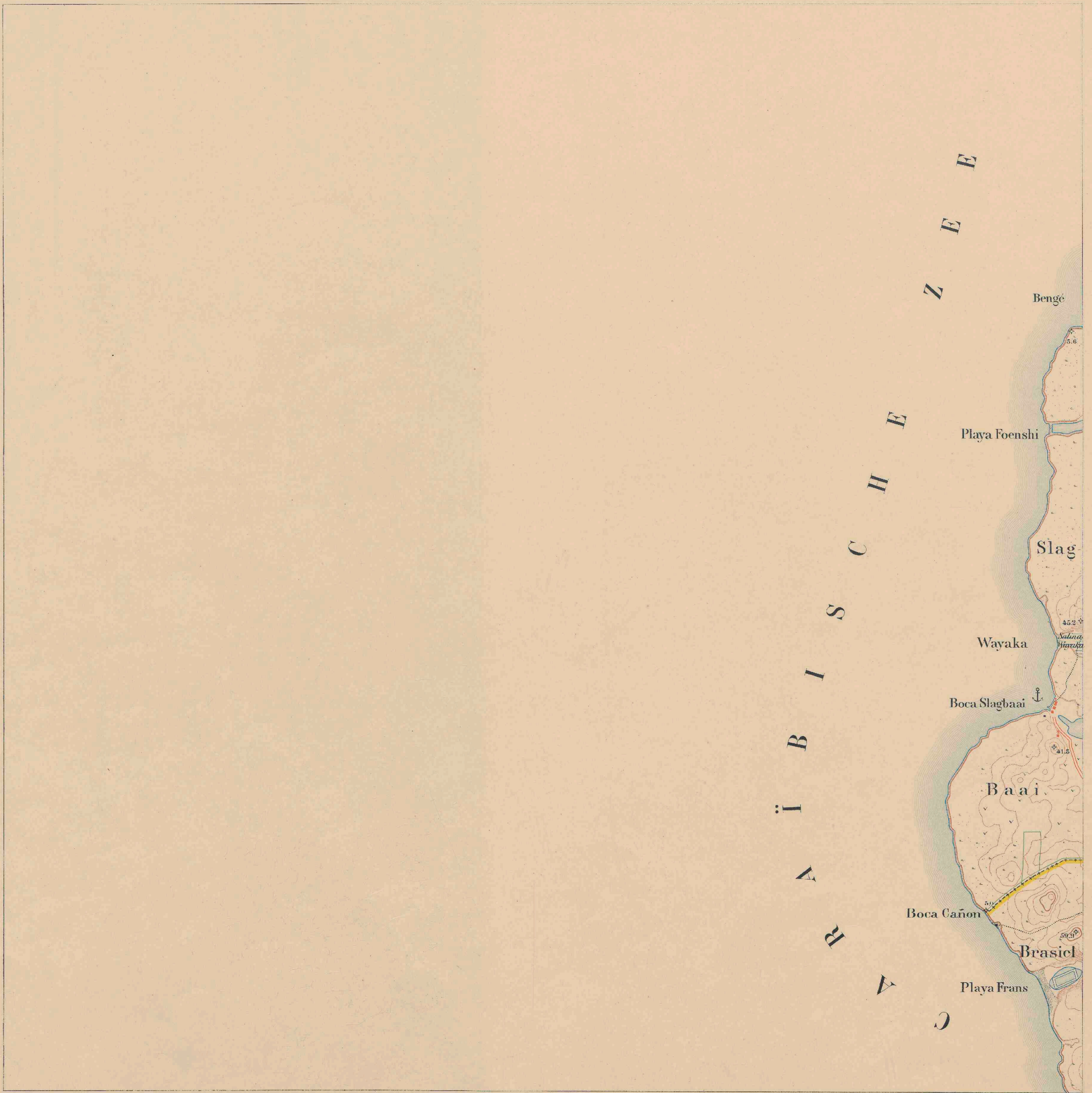
Schaal 1:150000.

87500 346

KK.



VII des



97500346

Blad 1. $68^{\circ} 28' 50''$ — $68^{\circ} 24' 30''$ W.L. van Greenwich.
 $12^{\circ} 19' 0''$ — $12^{\circ} 14' 40''$ N.B.





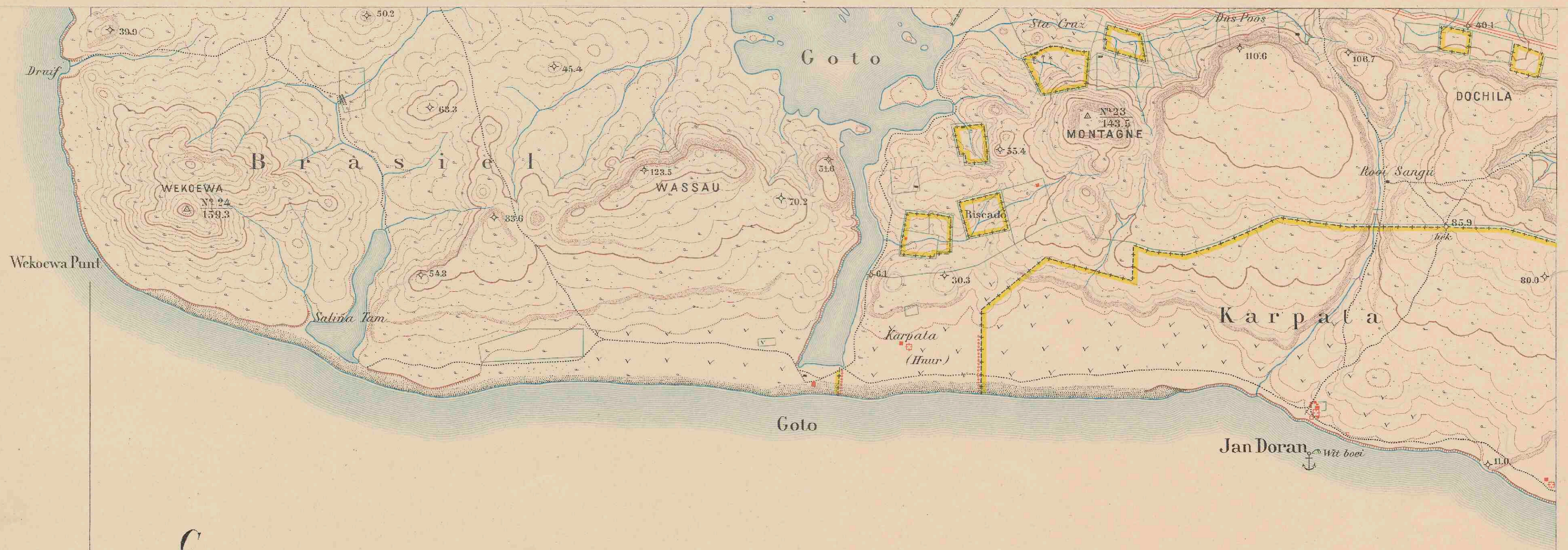
Blad II. 68° 24' 30" — 68° 20' 10" W.L.van Greenwich.
 12° 19' 0" — 12° 14' 40" N.B.





Blad III. $68^{\circ}20'10''$ — $68^{\circ}15'50''$ W.L. van Greenwich.
 $12^{\circ}19'0''$ — $12^{\circ}14'40''$ N.B.





C
A
R
A
I
B
I
S
C
H
I
E
Z
E
E

Blad IV. 68° 24' 30" — 68° 20' 10" W.L. van Greenwich.
12° 14' 40" — 12° 10' 20" N. B.



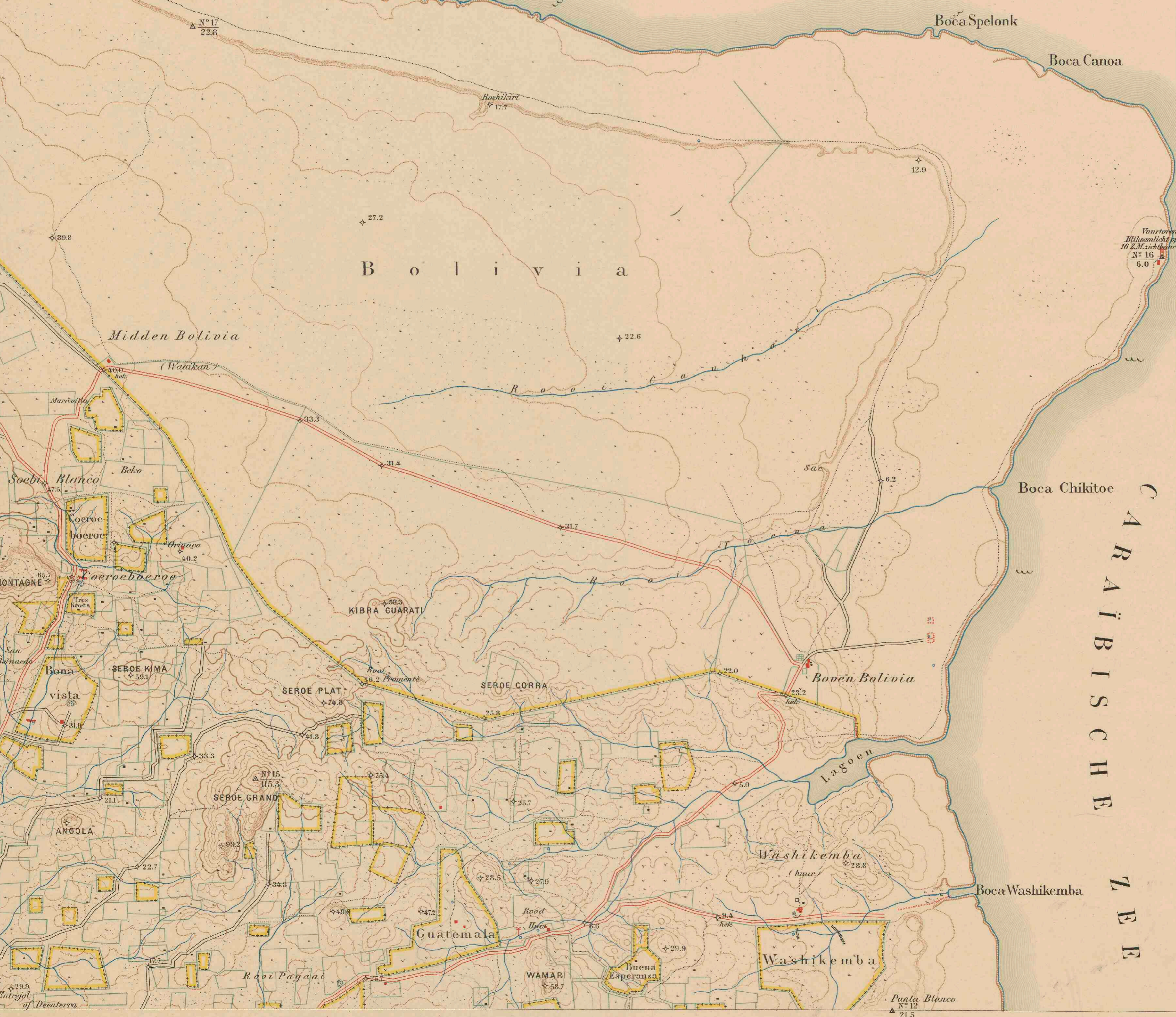
VII DC 5



Blad V. 68° 20' 10" — 68° 15' 50" W.L. van Greenwich.
12° 14' 40" — 12° 10' 20" N.B.



C A R A Ï B I S C H E Z E E



Blad VI. 68° 15' 50" — 68° 11' 30" W.L. van Greenwich.
12° 14' 40" — 12° 10' 20" N.B.



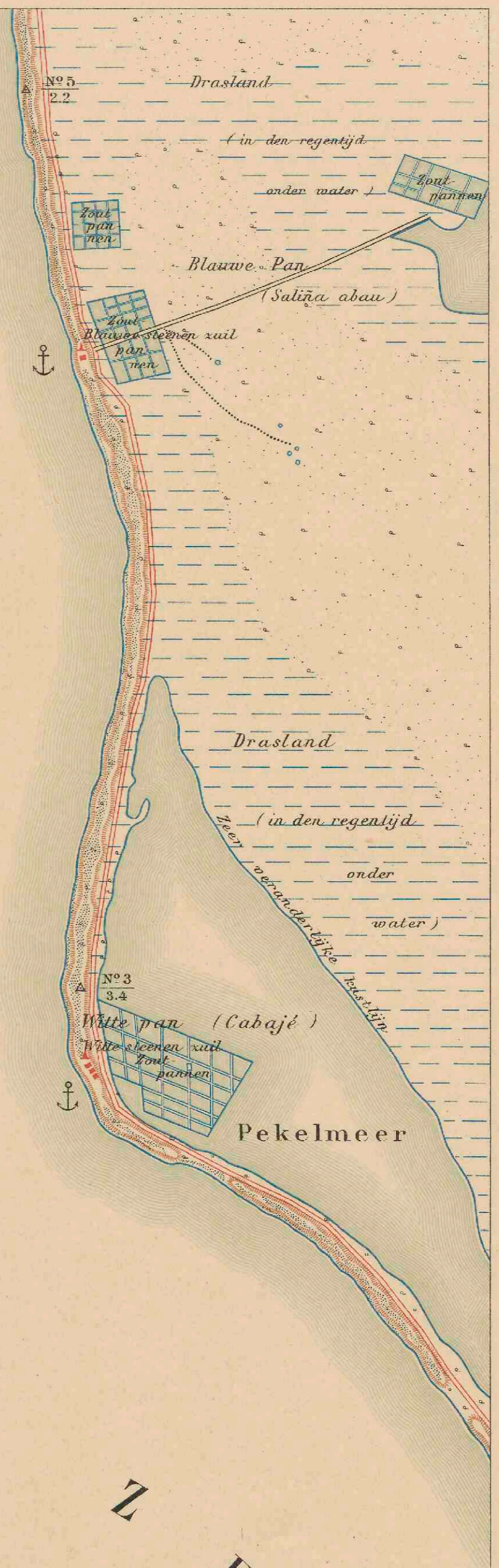


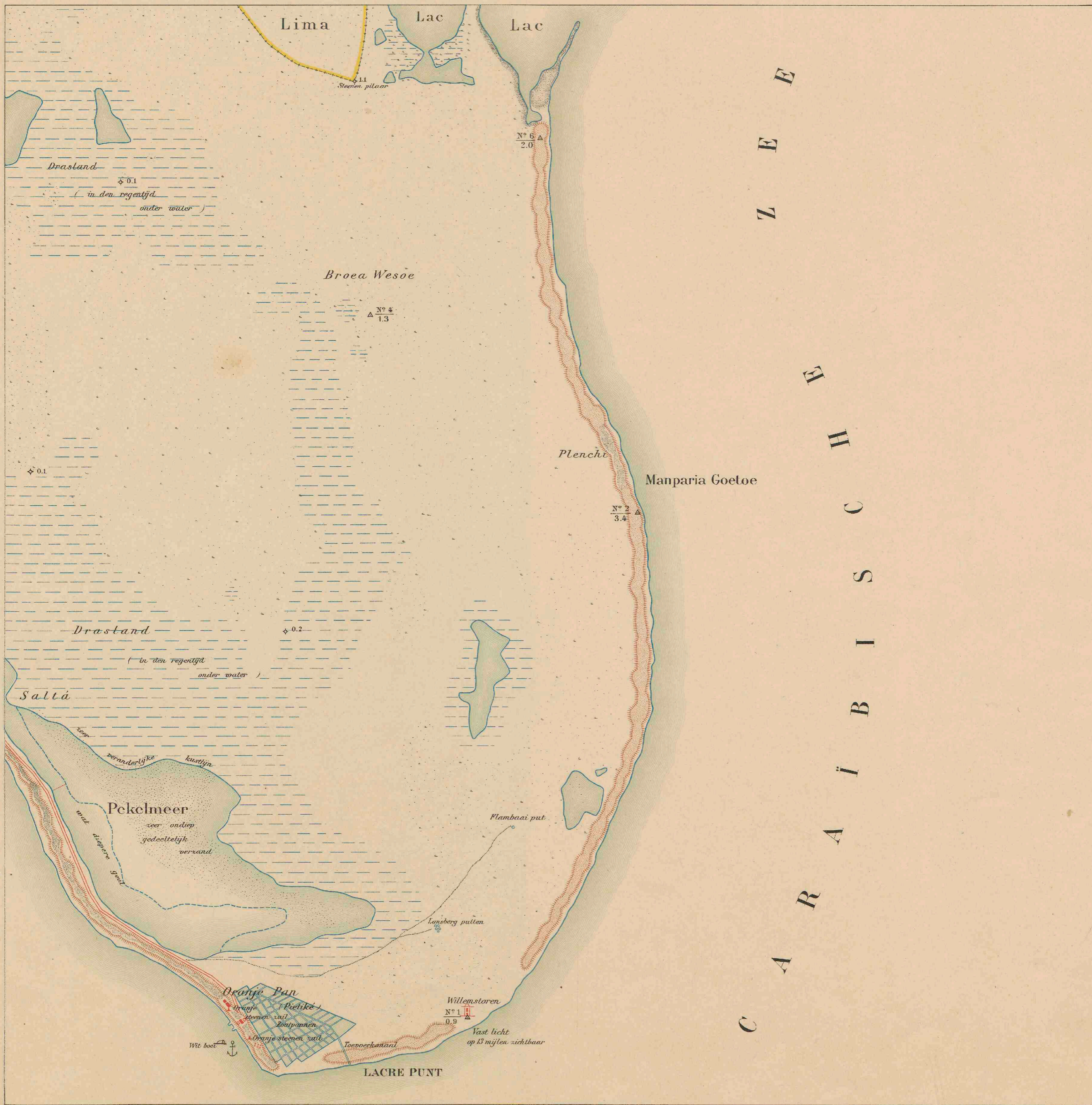


Blad VIII $68^{\circ} 15' 50''$ — $68^{\circ} 11' 30''$ W.L. van Greenwich.
 $12^{\circ} 10' 20''$ — $12^{\circ} 6' 0''$ N.B.



C
A
R
A
I
B
I
S
C
H
E
E
Z
E





Blad X. 68° 15' 50" — 68° 11' 30" W.L. van Greenwich.
 12° 6' 0" — 12° 1' 40" N.B.

