



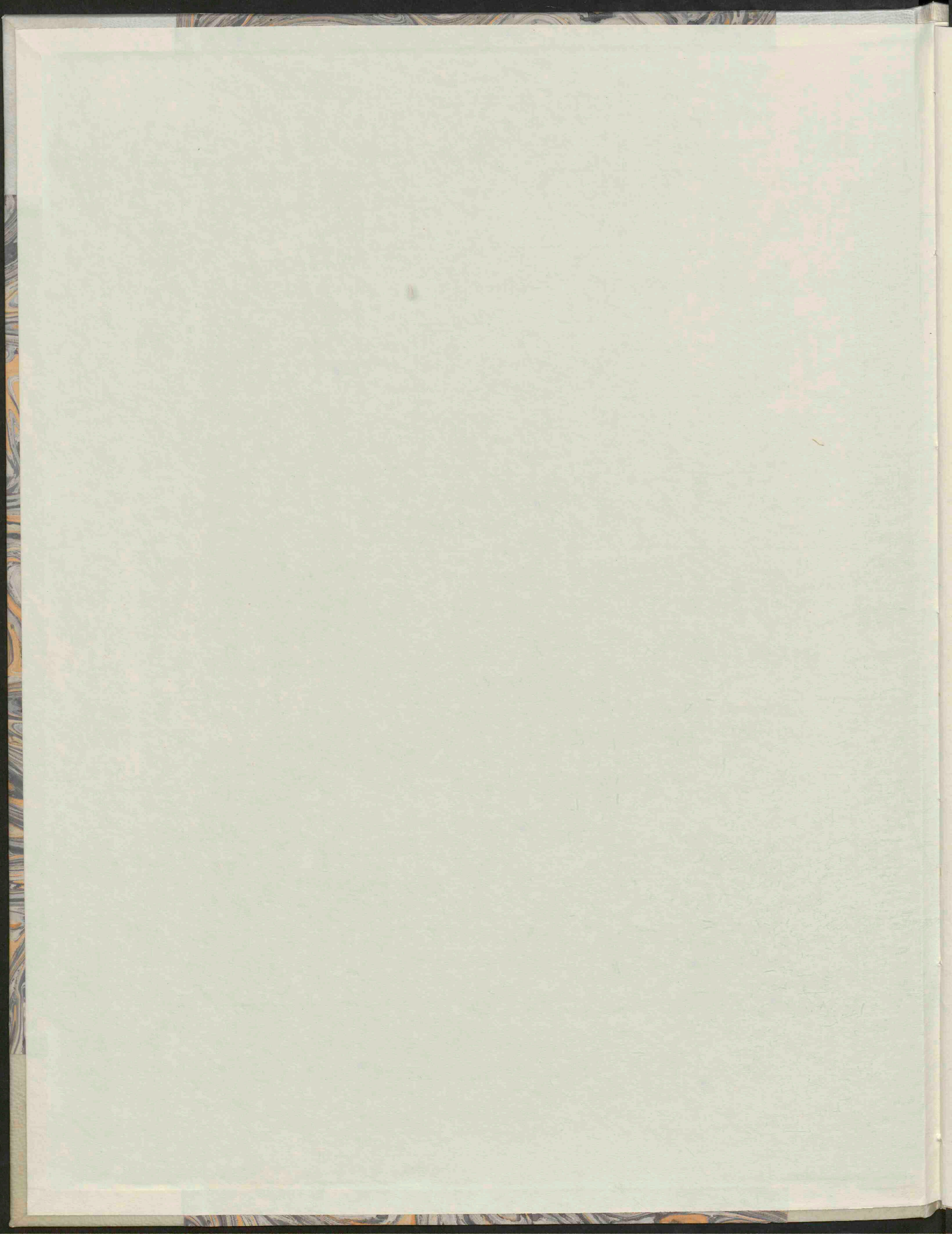
**Joh. Remmelini ... Pinax microcosmographicus: in quo
certissimum anatomiae compendium variis aere incis
visionibus proponitur**

<https://hdl.handle.net/1874/288293>

MBUMA

E 2 1-2

129



Dr. Francis T. A. M. M. D.

PINNACULA

MICROCOSMOGRAPHIC

THE HISTORY OF THE PINNACULA

AND THE HISTORY OF THE PINNACULA

AND THE HISTORY OF THE PINNACULA

AND THE HISTORY OF THE PINNACULA

AND THE HISTORY OF THE PINNACULA



Dr. Francis T. A. M. M. D.

ON THE DING

MENICHETKE LICHAEUS

AND THE HISTORY OF THE PINNACULA

AND THE HISTORY OF THE PINNACULA

AND THE HISTORY OF THE PINNACULA

AND THE HISTORY OF THE PINNACULA

AND THE HISTORY OF THE PINNACULA



W. Koster

Joh. Remmelini L. A. M. & M. D.

P I N N A X
MICROCOSMOGRAPHICUS,

In Quo

Certissimum Anatomiae compendium variis ære incisus visionibus proponitur.

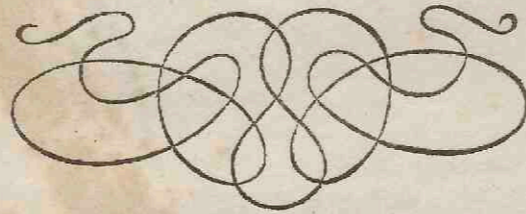
In usum Medicorum, Chirurgorum, ac Pharmacopæorum.

Nunc

In Nostram Linguam translatus, & in lucem missus, A JUSTO GRATIANO.

Editio secunda, priori multò emendatior.

Ex Typographia Pauli Matthia.



Joh. Remmelini, L. A. M. en M. D.

O N T L E D I N G
Des
Menschelyke Lichaems,

Waer in

Alle de deelen des selve, met oplichtende Figuren naukeurig en konstelyk verтоondt worden.

Dienstigh alle Artsen, Chirurgyns, Apothekers, en Liefhebbers.

Uit het Latyn in de Nederlandtse Tale overgeset, en konstigh in't licht gebracht, door JUSTUS DANCKERS.

De tweede Druk, merckelyk verbeeterdt en van ontallyke Fauten gesuyverdt.



AMSTERDAM,

Voor JUSTUS DANCKERSZ. Konst, Kaert en Boeck-verkooper, in de Kalver-stræct, in de Danckers, 1667.

Cutis cum vasis Cutaneis scarificari & secari solitis.

Afbeeldnisse der Huyd-aderen, diemen gewoon is te openen, en te koppen.

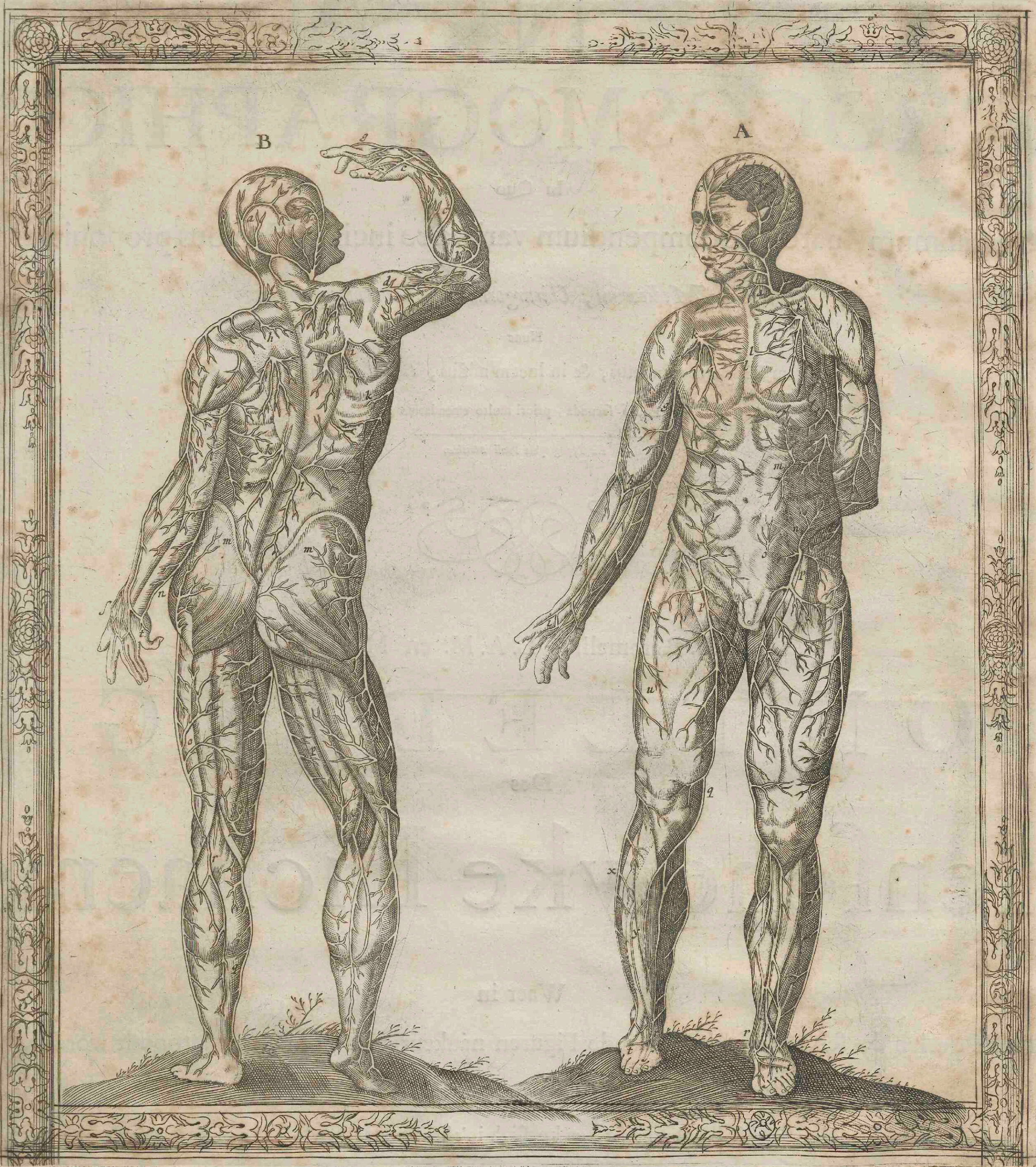


Figura A.

a Jugularis externa, quae exterius per occipitium, interius in os ablutitur.
 b Hujus ramus ad buccam & nasum.
 c Vena frontis alterius lateris vena juncta.
 d Vena Temporis.
 e Vena Auris.
 f, g Rami ab Axillari.
 f Cephalica.
 g Hepatica, seu Basilica.
 h Mediana ex Cephalica & hepatica Ramorum congressu.
 i Hepaticae rami per volam sparsi.

k, k Venae à muscula.
 l, l Venae à mammaria.
 m, m Propagines à venae cavae Ramis emergent.
 n Rami ab Epigastrica ascendentes.
 o, p, r Vena Cruralis interior seu saphæna.
 o Hujus ramus per inguina.
 p Hujus ramus per Femora.
 q Tibiæ interior seu poplitea.
 r Saphæna.
 s Vena ad pollicem cephalica.
 t Anonima ad minimum digitum.
 u Tibiæ superior seu vena

cruralis exterior.
 x Tibiæ exterior seu suralis.
 y Ischiatica.
 Figura B.
 a Vena pappis.
 b Mediana Fig. A, h.
 c Hujus partitio ubi Rami ejus in manu externa reliquis commiscetur.
 d Cephalica Fig. A, f.
 e Rami hujus ad carpum manum externam ferme totam irrigant.
 f Ramus ejus in pollice qui pro cephalica inciditur.
 g Saluataella seu Lienaris ex medianæ & hepaticæ Ramis constituta.

h, h Surculi musculosi.
 i Venæ humerariae.
 k Ramus per pectoris lateris.
 l Surculi lumbares.
 m Venæ per nates ab externo venae cavæ Ramo.
 n Rami crurales externi ad Coxendicem.
 o Rami sursum Femur posterius perreptantes.
 p Vena cruralis interior, Fig. A, o, p, r.
 q Tibiæ interior, Fig. A, q.

FINIS.

Figura A.

a De buytenste Krop-ader, die van buyten door 't achterhoofd van binnen door de moort heen loopt.
 b Een tack hier van na de Neus en Kalken.
 c De Ader van 't voor-hoofd ver-eenicht met de Ader van d'ander zy.
 d De Ader van den slaep.
 e De Oor-ader.
 f, g Tacken van de Oxel-ader.
 f De Hoofst-ader.
 g De Lever-ader.
 h De Middell-ader van de byeen-komste der tacken van de Hoofst-ader en Lever-ader.
 i Tacken van de hepatica door 't hol van de Handt verstroyt.
 k, k Aderen van de Muskel-ader.
 l, l Aderen van de Mam-ader.
 m, m Uytpruytels komende van de tacken van de Holle-ader.
 n Tacken van de Opperbuik-ader

opklimmende.
 o, p De binnenste Been-ader.
 o Een tack hier van door de lieten.
 p Een tack hier van door de Dyen.
 q De binnenste Knie-ader.
 r De Moeder-ader.
 s De Hoofst-ader by den Duym.
 t De anania by den Finck.
 u De buytenste Been-ader.
 v De buytenste en Kuyt-ader.
 w De Heup-ader.

Figura B.

a Ader van 't Achter-hoofst.
 b De Middell-ader Fig. A, b.
 c Deses deylinge daer hare tacken in de buytenste handt met de andere vermengt worden.
 d De Hoofst-ader Fig. A, f.
 e De Tacken van dele die het buytenste des Stomps van de Handt by naer heel bevochtigen.
 f Een Tack daer van in den Duym, die in stee van de Hoofst-ader geopen wort.

g Mildt-ader gemaect uit de Tackken van de Mediaen en Hepatica.
 h, h Van spierachtrige Surkels.
 i Spruytjens der aerden van de Schoulers.
 k Een Tack door de syde van de Borst.
 l Spruytjens van de Lend-aderen.
 m Aderen door de Billen loopende van de buytenste Tack van de Holle-ader.
 n Tackken van de buytenste Been-ader by de Heupe.
 o Tackken loopende om hoogh door 't achterste van de Dyen.
 p De binnenste Been-ader Figuyt A, o, p, r.
 q De binnenste Scheen-ader Figuyt A, q.

E Y N D E.

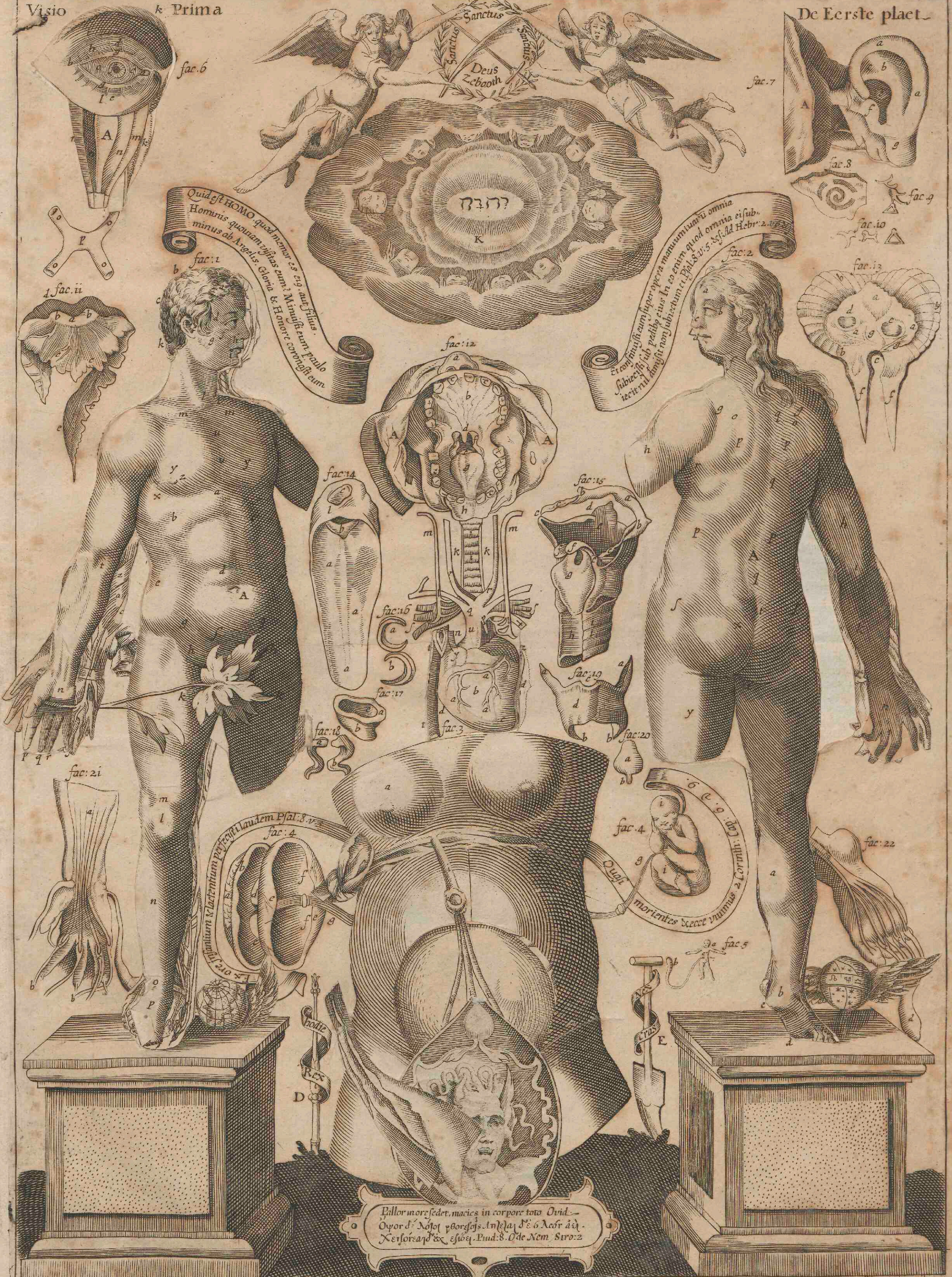
FIGURA I. DISSECTIONIS CORPORIS HUMANI.

Divisio 1. Facies 1. Figura A. a, c, i Caput. a, b, c Pars capillata a Sinciput. b Vertex. c Occiput. d Tempus. e Auris. f Frons. * f, g, i Pars glabra, seu facies f Mala, seu gena. g Bucca. h Myrtax. i Mentum. k Cervix, hic nucha quae se- taceo perforatur. l, l Jugulum. m, m Claves. n Vola circa quam montes. o, p, q, r, s, t, u, v, w, x, y, z, aa, ab, ac, ad, ae, af, ag, ah, ai, aj, ak, al, am, an, ao, ap, aq, ar, as, at, au, av, aw, ax, ay, az, ba, bb, bc, bd, be, bf, bg, bh, bi, bj, bk, bl, bm, bn, bo, bp, bq, br, bs, bt, bu, bv, bw, bx, by, bz, ca, cb, cc, cd, ce, cf, cg, ch, ci, cj, ck, cl, cm, cn, co, cp, cq, cr, cs, ct, cu, cv, cw, cx, cy, cz, da, db, dc, dd, de, df, dg, dh, di, dj, dk, dl, dm, dn, do, dp, dq, dr, ds, dt, du, dv, dw, dx, dy, dz, ea, eb, ec, ed, ee, ef, eg, eh, ei, ej, ek, el, em, en, eo, ep, eq, er, es, et, eu, ev, ew, ex, ey, ez, fa, fb, fc, fd, fe, ff, fg, fh, fi, fj, fk, fl, fm, fn, fo, fp, fq, fr, fs, ft, fu, fv, fw, fx, fy, fz, ga, gb, gc, gd, ge, gf, gg, gh, gi, gj, gk, gl, gm, gn, go, gp, gq, gr, gs, gt, gu, gv, gw, gx, gy, gz, ha, hb, hc, hd, he, hf, hg, hh, hi, hj, hk, hl, hm, hn, ho, hp, hq, hr, hs, ht, hu, hv, hw, hx, hy, hz, ia, ib, ic, id, ie, if, ig, ih, ii, ij, ik, il, im, in, io, ip, iq, ir, is, it, iu, iv, iw, ix, iy, iz, ja, jb, jc, jd, je, jf, jg, jh, ji, jj, jk, jl, jm, jn, jo, jp, jq, jr, js, jt, ju, jv, jw, jx, jy, jz, ka, kb, kc, kd, ke, kf, kg, kh, ki, kj, kl, km, kn, ko, kp, kq, kr, ks, kt, ku, kv, kw, kx, ky, kz, la, lb, lc, ld, le, lf, lg, lh, li, lj, lk, ll, lm, ln, lo, lp, lq, lr, ls, lt, lu, lv, lw, lx, ly, lz, ma, mb, mc, md, me, mf, mg, mh, mi, mj, mk, ml, mn, mo, mp, mq, mr, ms, mt, mu, mv, mw, mx, my, mz, na, nb, nc, nd, ne, nf, ng, nh, ni, nj, nk, nl, nm, nn, no, np, nq, nr, ns, nt, nu, nv, nw, nx, ny, nz, oa, ob, oc, od, oe, of, og, oh, oi, oj, ok, ol, om, on, oo, op, oq, or, os, ot, ou, ov, ow, ox, oy, oz, pa, pb, pc, pd, pe, pf, pg, ph, pi, pj, pk, pl, pm, pn, po, pp, pq, pr, ps, pt, pu, pv, pw, px, py, pz, qa, qb, qc, qd, qe, qf, qg, qh, qi, qj, qk, ql, qm, qn, qo, qp, qq, qr, qs, qt, qu, qv, qw, qx, qy, qz, ra, rb, rc, rd, re, rf, rg, rh, ri, rj, rk, rl, rm, rn, ro, rp, rq, rr, rs, rt, ru, rv, rw, rx, ry, rz, sa, sb, sc, sd, se, sf, sg, sh, si, sj, sk, sl, sm, sn, so, sp, sq, sr, ss, st, su, sv, sw, sx, sy, sz, ta, tb, tc, td, te, tf, tg, th, ti, tj, tk, tl, tm, tn, to, tp, tq, tr, ts, tt, tu, tv, tw, tx, ty, tz, ua, ub, uc, ud, ue, uf, ug, uh, ui, uj, uk, ul, um, un, uo, up, uq, ur, us, ut, uu, uv, uw, ux, uy, uz, va, vb, vc, vd, ve, vf, vg, vh, vi, vj, vk, vl, vm, vn, vo, vp, vq, vr, vs, vt, vu, vv, vw, vx, vy, vz, wa, wb, wc, wd, we, wf, wg, wh, wi, wj, wk, wl, wm, wn, wo, wp, wq, wr, ws, wt, wu, wv, ww, wx, wy, wz, xa, xb, xc, xd, xe, xf, xg, xh, xi, xj, xk, xl, xm, xn, xo, xp, xq, xr, xs, xt, xu, xv, xw, xx, xy, xz, ya, yb, yc, yd, ye, yf, yg, yh, yi, yj, yk, yl, ym, yn, yo, yp, yq, yr, ys, yt, yu, yv, yw, yx, yy, yz, za, zb, zc, zd, ze, zf, zg, zh, zi, zj, zk, zl, zm, zn, zo, zp, zq, zr, zs, zt, zu, zv, zw, zx, zy, zz, aa, ab, ac, ad, ae, af, ag, ah, ai, aj, ak, al, am, an, ao, ap, aq, ar, as, at, au, av, aw, ax, ay, az, ba, bb, bc, bd, be, bf, bg, bh, bi, bj, bk, bl, bm, bn, bo, bp, bq, br, bs, bt, bu, bv, bw, bx, by, bz, ca, cb, cc, cd, ce, cf, cg, ch, ci, cj, ck, cl, cm, cn, co, cp, cq, cr, cs, ct, cu, cv, cw, cx, cy, cz, da, db, dc, dd, de, df, dg, dh, di, dj, dk, dl, dm, dn, do, dp, dq, dr, ds, dt, du, dv, dw, dx, dy, dz, ea, eb, ec, ed, ee, ef, eg, eh, ei, ej, ek, el, em, en, eo, ep, eq, er, es, et, eu, ev, ew, ex, ey, ez, fa, fb, fc, fd, fe, ff, fg, fh, fi, fj, fk, fl, fm, fn, fo, fp, fq, fr, fs, ft, fu, fv, fw, fx, fy, fz, ga, gb, gc, gd, ge, gf, gg, gh, gi, gj, gk, gl, gm, gn, go, gp, gq, gr, gs, gt, gu, gv, gw, gx, gy, gz, ha, hb, hc, hd, he, hf, hg, hh, hi, hj, hk, hl, hm, hn, ho, hp, hq, hr, hs, ht, hu, hv, hw, hx, hy, hz, ia, ib, ic, id, ie, if, ig, ih, ii, ij, ik, il, im, in, io, ip, iq, ir, is, it, iu, iv, iw, ix, iy, iz, ja, jb, jc, jd, je, jf, jg, jh, ji, jj, jk, jl, jm, jn, jo, jp, jq, jr, js, jt, ju, jv, jw, jx, jy, jz, ka, kb, kc, kd, ke, kf, kg, kh, ki, kj, kl, km, kn, ko, kp, kq, kr, ks, kt, ku, kv, kw, kx, ky, kz, la, lb, lc, ld, le, lf, lg, lh, li, lj, lk, ll, lm, ln, lo, lp, lq, lr, ls, lt, lu, lv, lw, lx, ly, lz, ma, mb, mc, md, me, mf, mg, mh, mi, mj, mk, ml, mn, mo, mp, mq, mr, ms, mt, mu, mv, mw, mx, my, mz, na, nb, nc, nd, ne, nf, ng, nh, ni, nj, nk, nl, nm, nn, no, np, nq, nr, ns, nt, nu, nv, nw, nx, ny, nz, oa, ob, oc, od, oe, of, og, oh, oi, oj, ok, ol, om, on, oo, op, oq, or, os, ot, ou, ov, ow, ox, oy, oz, pa, pb, pc, pd, pe, pf, pg, ph, pi, pj, pk, pl, pm, pn, po, pp, pq, pr, ps, pt, pu, pv, pw, px, py, pz, qa, qb, qc, qd, qe, qf, qg, qh, qi, qj, qk, ql, qm, qn, qo, qp, qq, qr, qs, qt, qu, qv, qw, qx, qy, qz, ra, rb, rc, rd, re, rf, rg, rh, ri, rj, rk, rl, rm, rn, ro, rp, rq, rr, rs, rt, ru, rv, rw, rx, ry, rz, sa, sb, sc, sd, se, sf, sg, sh, si, sj, sk, sl, sm, sn, so, sp, sq, sr, ss, st, su, sv, sw, sx, sy, sz, ta, tb, tc, td, te, tf, tg, th, ti, tj, tk, tl, tm, tn, to, tp, tq, tr, ts, tt, tu, tv, tw, tx, ty, tz, ua, ub, uc, ud, ue, uf, ug, uh, ui, uj, uk, ul, um, un, uo, up, uq, ur, us, ut, uu, uv, uw, ux, uy, uz, va, vb, vc, vd, ve, vf, vg, vh, vi, vj, vk, vl, vm, vn, vo, vp, vq, vr, vs, vt, vu, vv, vw, vx, vy, vz, wa, wb, wc, wd, we, wf, wg, wh, wi, wj, wk, wl, wm, wn, wo, wp, wq, wr, ws, wt, wu, wv, ww, wx, wy, wz, xa, xb, xc, xd, xe, xf, xg, xh, xi, xj, xk, xl, xm, xn, xo, xp, xq, xr, xs, xt, xu, xv, xw, xx, xy, xz, ya, yb, yc, yd, ye, yf, yg, yh, yi, yj, yk, yl, ym, yn, yo, yp, yq, yr, ys, yt, yu, yv, yw, yx, yy, yz, za, zb, zc, zd, ze, zf, zg, zh, zi, zj, zk, zl, zm, zn, zo, zp, zq, zr, zs, zt, zu, zv, zw, zx, zy, zz

Visio

k Prima

De Eerste plaet



Visio Secunda

De tweede plaet



Facies 1. Figura A.
Vena frontis.
Vena temporum.
A Cephalica, seu humeraria capiti.
Cephalica, seu humeraria capiti.
Basilica Jecoraria, seu hepatica.
Mediana, communis, Nigra feu cordis vena.
Nota. Venam plerumque sed falso pro mediana fecari, & a vena d. inferiorum ramum Salvatellam & hic & ad minimum digtium incidendam constitueret.
Salvatella, Scelles vel Splenetica.
Cephalica in manu.
Tibia exterior.
Tibia interior, seu Poplitea & Curvatura, Item t.
Ichiadica.
Saphena, Item A.
Vena pollicis pedis quibudam cephalica.
Vena minimi digiti.
Nodulus hic observandus valvula venarum lateribus adnatae faciunt.
Pubes seu Pecten.
Muliebria, seu vulva Rima.
Clitoris.
Colles.
Peritonaeum.
Diaphragma.
Ventriculus.
Hepar.
Vesica.
Omentum.
Intestina.
Vena Porta.
Cavitas ventris in ferio.
Cor. (ferioris).
Aspera arteria.
Arteria magna.
Vertebrae.
Cavitas ventris in ferio.
Uterus.
Fundus.
Cervix.
Spermaticea vena & arteria.
Ramus a spermaticis ad peritonaeum tendens.
Vasa inferiora uteri cervicem ejus perrepant.
Vasa a sperm. ad cervicem.
Tuba fem. vas seu deferens.
Vasa ad tubam.
Testis.
Ligamenta uteri in ferio, seu Cremasteres ad pudendum definentes.
Reliqua litera aequipollent, visio 2. fac. 1. Figur. K. explicatis.
Facies 2. Figura A.
Exterior & inferior calvariae superficies.
Foramen occipiti.
Capitula ossis occipiti duo primae colli vertebrae coarticulata.
Processus tyloidei.
Sinus temporum pro inferioris maxillae articulatione.
Prominentia maxillae superioris ad tempora.
Jugale os.
Os occipitis.
Processus vespertilionum alas referentes.
Palatum.
Dentes maxillae superioris.
Figura B.
Inversum cerebrum dura matre tectum.
Locus ubi glandula pituitaria in osse cunei, seu sphenoide residet.
Dura mater, seu crassa meninx.
Vasa per meningem sparsa.
Figura C.
Inversum cerebrum a dura matre liberum.
Opticorum nervorum Coitus.
Cerebrum cum anfractibus adhuc integrum.
Oculi tunicae a meningibus, in quas nervus opticus expanditur.
Processus mamillares.
Origo nervorum opticorum ex spinali medulla.
Spinalis medulla.
Ramus seu filamentum nervosum, quod videtur esse nervus peculiaris, forsan accipiendus pro 8. cerebri nervo.
Nervi oculorum motorii.
Nervorum tertium par seu minor radix tertii paris.
Ramus quarti paris in palati tunica, qui potius a 3. nervo oritur.
Nervorum par quartum seu tertii paris major radix.
Auditorius nervus in cavitate ossis petrosi expansus, seu 5. nervus, aut quintum par.
Nervorum sextum par seu Nervorum septimum.
Cerebellum.
Plexus choroidis in anteriori dextro ventriculo cerebri.
Dextri ventriculi cavitas, qui ob id confuscus, ut ejus magnitudo appareat, at ex altera parte sinister vent. claudus est.
Schistura seu crassities cerebrique inferius claudit vent.
Substantia cerebri infra medullam.
Figura D.
Superficies interior & superior calvaries.
Ossium fyncipitis cavitas.
Occipiti ossium cavitas.
Sinus seu rimulae quarum plures hic sunt, vnae quibus immersa.
Cavitas frontis ossis.
Cavitatis squamas quales inter duas ossis calvae.
Ossis calvae crassities.
Uteri diflecti interna.
Sinus dexter.
Sinus sinister.
Tunicae uteri crassities.
Uteri interioris orificium.
Portio membranarum uterum ligantium.
Cervix uteri.
Cervix vesicae.
Facies 4.
Porta truncus.
Clytica gemellae.
Gastrica dextra.
Bifurcatio trunci portae.
Ramus Splenicus.
Gastrica minor.
Gastrica major, ab hac.
Ventriculi coronaria.
Epipliois dextra.
Epipliois postica, hujus rami.
Dexter.
Sinister.
N. n. Splenici rami per Lienem distributio.
Vas breve.
Gastroepiplois sinistra.
Ramus mesentericus.
Gastroepiplois dextra.
Intestinalis.
Mesenterici rami divaricatio, a quibus, & a
Sinistro ramo.
Haemorrhoidalis interna quam ad ductum intestini Coli & Recti Anam petit.
Facies 5.
Finis tenuium intestinum, pro-ut hic abscissa & filo ligata sunt.
Colum.
Rectum intestinum.
Hic virorum penis, & mulierum uterus alligatur.
Spincter musculus.
Anus cum musculis penis.
Facies 6.
Supinum jacens cerebrum, a quo medulla separata.
Dextra cerebelli pars.
Sinistra cerebelli pars.
Medium cerebelli.
Portiones cerebelli quibus connascebatur medulla.
Sinus cerebelli qui cum sinu medullae 4. ventriculum facit.
Facies 7.
Cerebrum.
Tubera cerebri.
Cerebellum.
Medulla abscissa, quae hic per spinae vertebrae delabi & spinalis dici incipit.
Processus mamillaris olfactui ferviens.
Nervi optici seu primus par nervorum.
Tunica in quam hic nervus expanditur.
Par 2. seu Oculi motorius.
Par tertium seu paris tertii minor radix.
Propago 3. paris ad cutim & mulculos abiens.
Alia propago in maxillam superi.
Alia propago ad narium tunicam.
Prop. alia in temporalem musculum sc diffundens.
Par quartum seu tertii paris minor radix.
Huis propago contorta.
Propago hujus ad gingivam, alia ad dentes superiores.
Alia propago ad maxillam inferiorem, cujus furculi ad dentes utque pertingunt.
Nervi 4. paris in lingua & palati tunicas absumptio.
Quintum par, seu nervus auditorius.
Rami 5. paris.
Faciem accedens, relictus hic pro 8. pari haberetur.
Superior cum nervo primo coiens.
Inferior cum nervo primo coiens.
Nervorum par 6. hic propago 7. paris quae superiora laryngis petit abscissa.
Nervi 6. & 7. progreffus.
Paris, 6. ramus ad cervicem.
Ramus a 7. pari ad fauces.
Nervorum 7. par.
Unio 6 & 7 paris.
Paris 6 ramus ad laryngem.
Nervi hujus bifurcatio.
Interior ramus vertebribus attentus.
Superius Ramus, ad claviculas & os pectoris.
Inferius, Rami per tunicum pulmonum.
Ramus dexteri nervi qui recurrentem constitunt.
Recurrens nervus sinister.
Stomachici nervi.
Distributio 6. nervi per inferiorem ventrem & omnia ejus contenta.
Facies 8.
Processus vermiformis anterior.
Facies 9.
Processus vermiformis posterior.
Facies 10.
Ventriculi posterior facies ad tergam versa.
Gula, seu orificium oesophagi in faucibus.
Longitudo ductus oesophagi.
Tonsillae juxta gulam.
Glandosum corpus ad vertebriam quintam.
Dextrum seu superius orificium ventriculi, circa quam ipse oesophagus jungitur.
Nervi a sexto pari ad ventrem.
Pylorus seu sinistram orificium ventriculi, vel inferius.
Doduenum intestinum.
Meatus bilarius in duodenum.
Vasa ventriculi abscissa.
Intima tunica ventriculi.
Tunica media divisula.
Ventriculi cavitas.
Extuberantia dextri orificii.
Duode. intest. interiora.
Orificium sinistram.
Pylori extuberantia.
Facies 11.
Portio venae cavae ubi Azygos oritur.
Vena Azygos.
Azygos rami ad 7. & octavam costam divisio.
Intercostales venae dextrae.
Intercost. venae sinistrae.
Facies 12.
Portio calvariae meningis crassa obsecta.
Nervorum opticorum portiones.
Arteriae carotides.
Pelvis propendens.
Glandula pituitaria.
Nervorum paris 2. portiones.
Facies 13.
Portio intestinum excissa juxta caecum hic aperta ubi Valvulam regressive fecum ex crassioribus in tenuia intestina impediendum monstrat.
Facies 14.
Vena cavae truncus descendens.
Arteria magna truncus descendens.
Ramus asper. ad peritonaeum.
Vena & arteria emulgens.
Vesica aperta.
Ureters.
Tuba seu vas deferens seu Vasa ad tubam spermatica & arteria divisio in ramos iliacos.
Vasa a spermaticis per uteri fundum & cervicem repentia.
Vena spermatica ex cavae truncus dextra.
Vena spermatica ex emulgente sinistra.
Arteria spermatica.
Vena & arteria spermatica contiguas, quae per peritonaei productiones in scrotum delabuntur.
Ejus cervix.
Vasa inferiora uteri cervicem illius implic.
Testes?
Ligamenta, seu cremasteres.
Pudendum.
Facies 15.
Cordis ventriculos secundum longum divisos exhibet.
Arteria magna truncus desc.
Arteria axillaris.
Arteria magna truncus ascend.
Arteria venosa.
Vena cava.
Ventriculus dexter cordis.
Ventriculus sinister cordis.
Carnae cordis substantia diffecta.
Facies 16.
Cor per sinistram ventriculi arteriam venosam apertum explic.
arteria magna refecta.
Vena arteriosa refecta.
arteriae venosae orificium apertu.
arteria sinistra conversa.
Vascula duae venosae arteriae.
Cordis substantia externa claudens ventriculum.
Filamenta corneis cordis partionibus quibus ut & valvulis adhaescentur quarum una innotatur.
Septum seu interstitium ventriculorum.
apex cordis.
Facies 17.
Cor per dextrum ventriculum & venam cavam apertum propag.
Vena cava.
Vena cava aperta.
Locus circa quem in cordis venae cava dextrum ventriculum hac.
Excrecentia seu protuberantia circularis juxta cavae orificium.
Vena cava trunci descendens orificium.
Vena cava ascendens trunci orificium.
Valvula duae venae cavae quibus tercia non signata ad lat.
Carnae partiones quibus filamenta.
Valvularum adhaescentur.
Apex cordis.



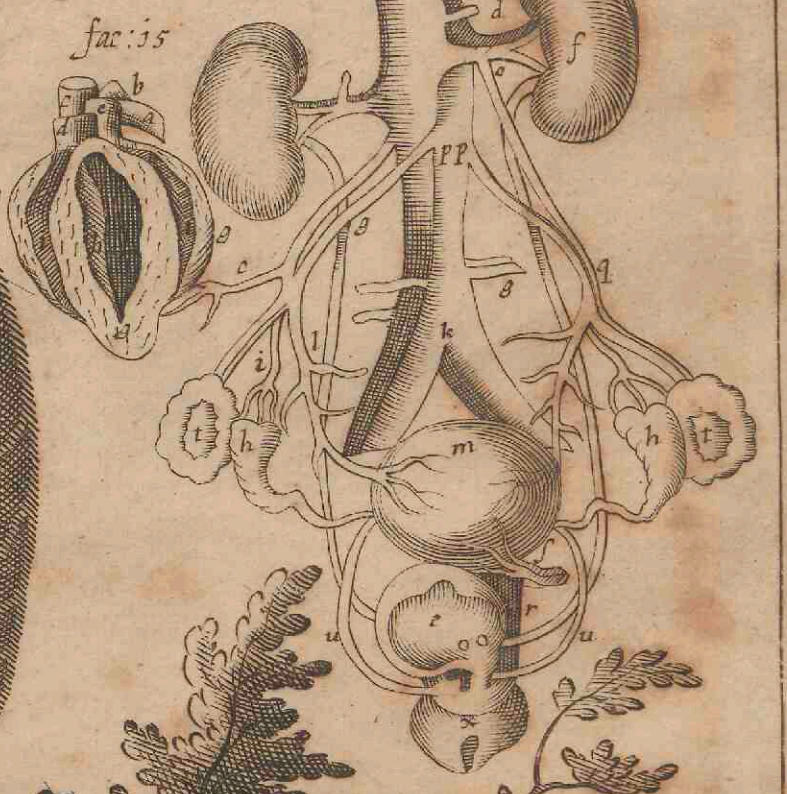
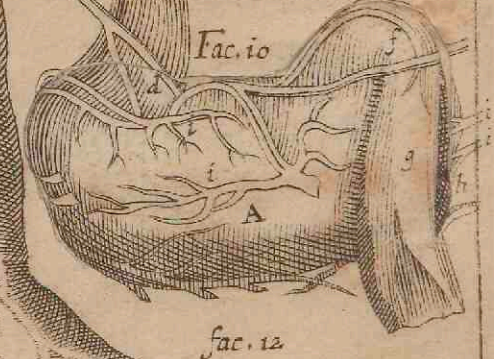
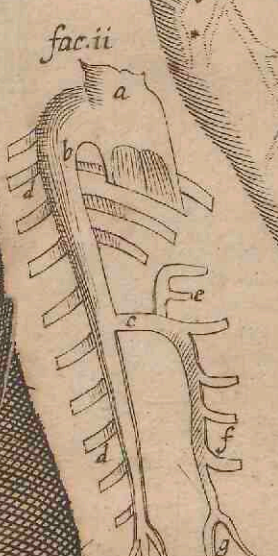
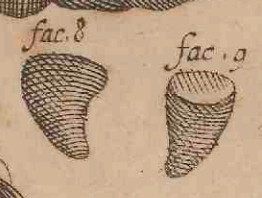
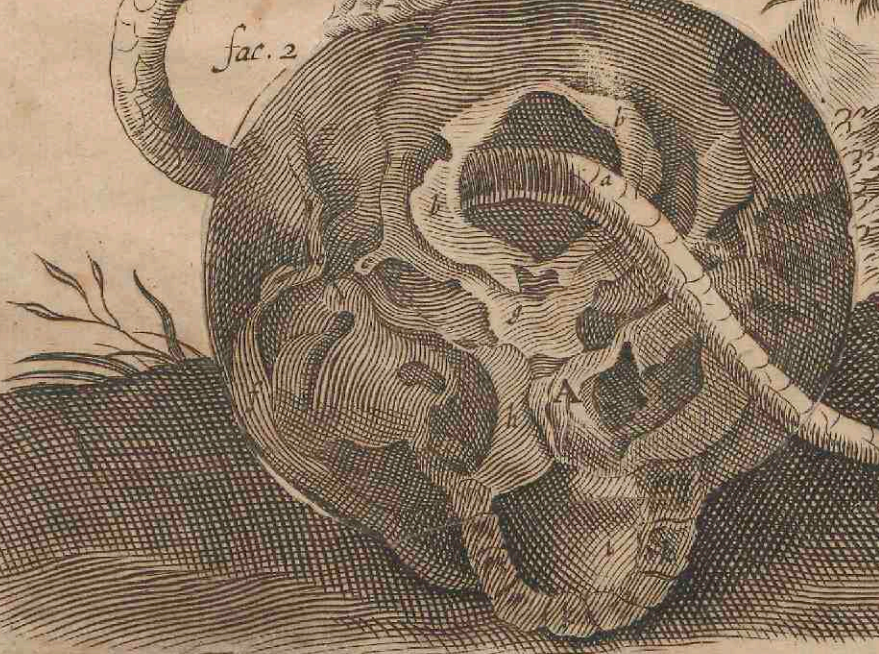
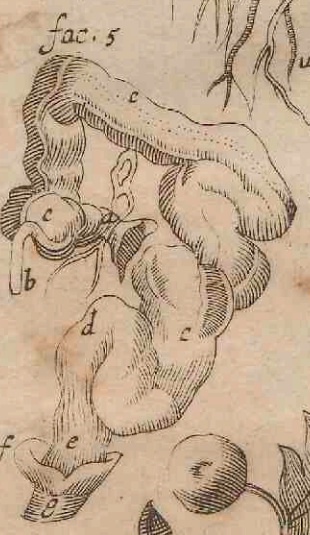
Visio Tertia
fac. 16

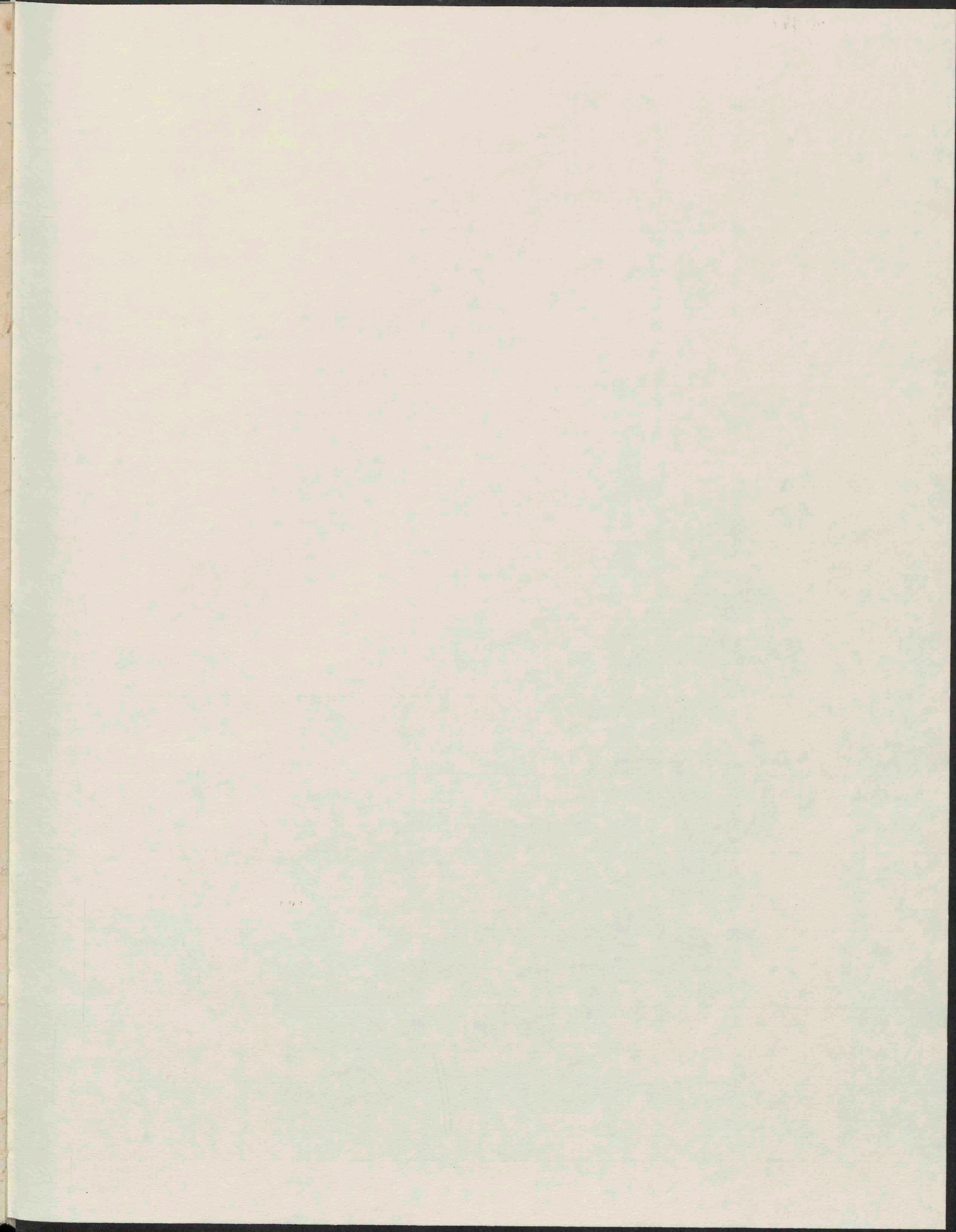
Finis ab origine pendet

De fac. 7 Derde plaet.

Dies nostri quasi
umbra super terram.
& nulla est mora
i. Paralip. Cap. 29. v. 15.

Vi Phoenix unat combustus sic
& HOMO qui sumi instar Cinis.





A 1481407

