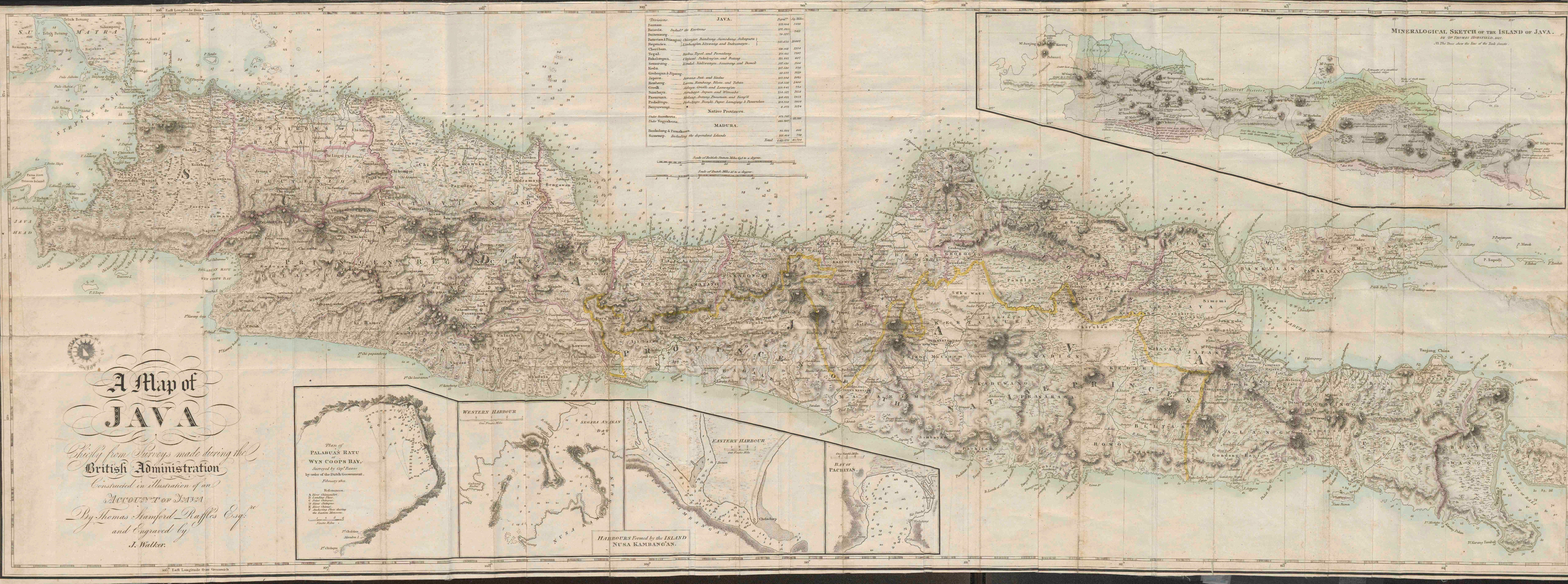




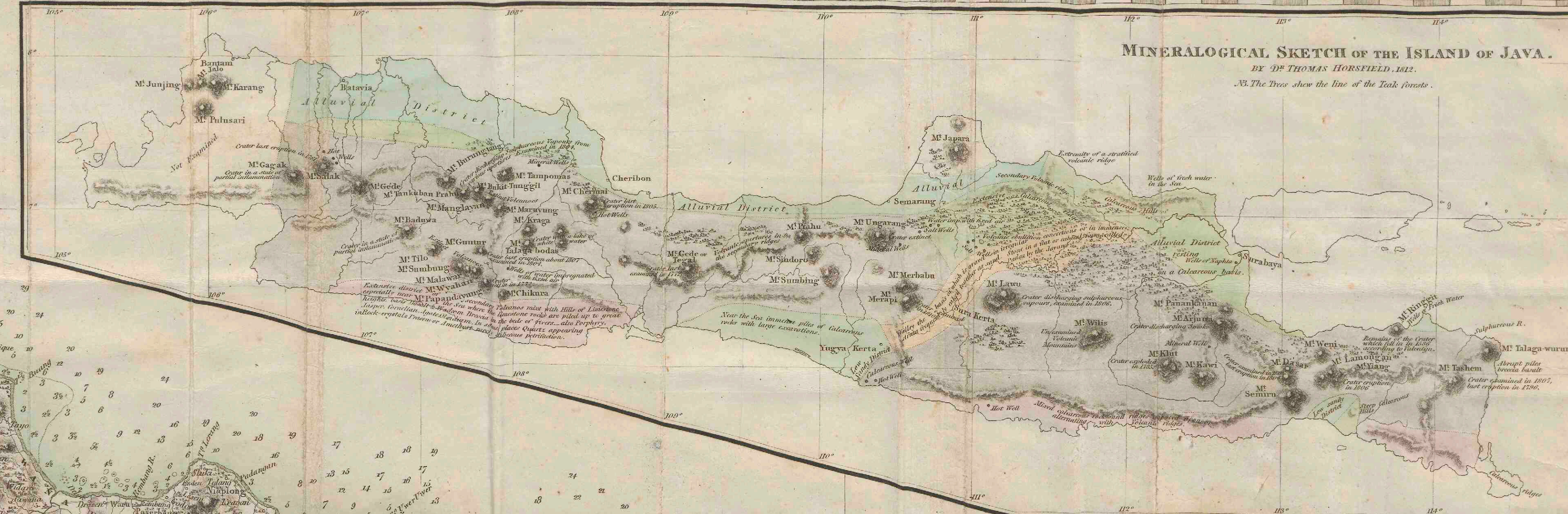
# The history of Java

<https://hdl.handle.net/1874/291783>

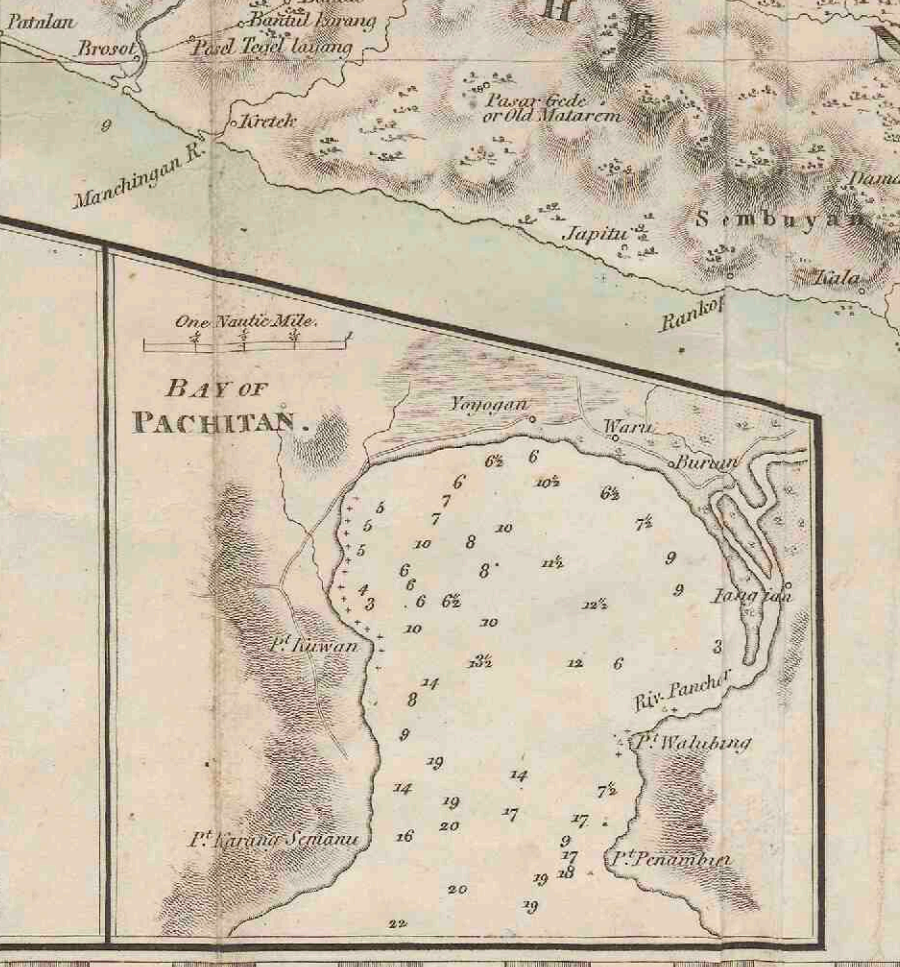
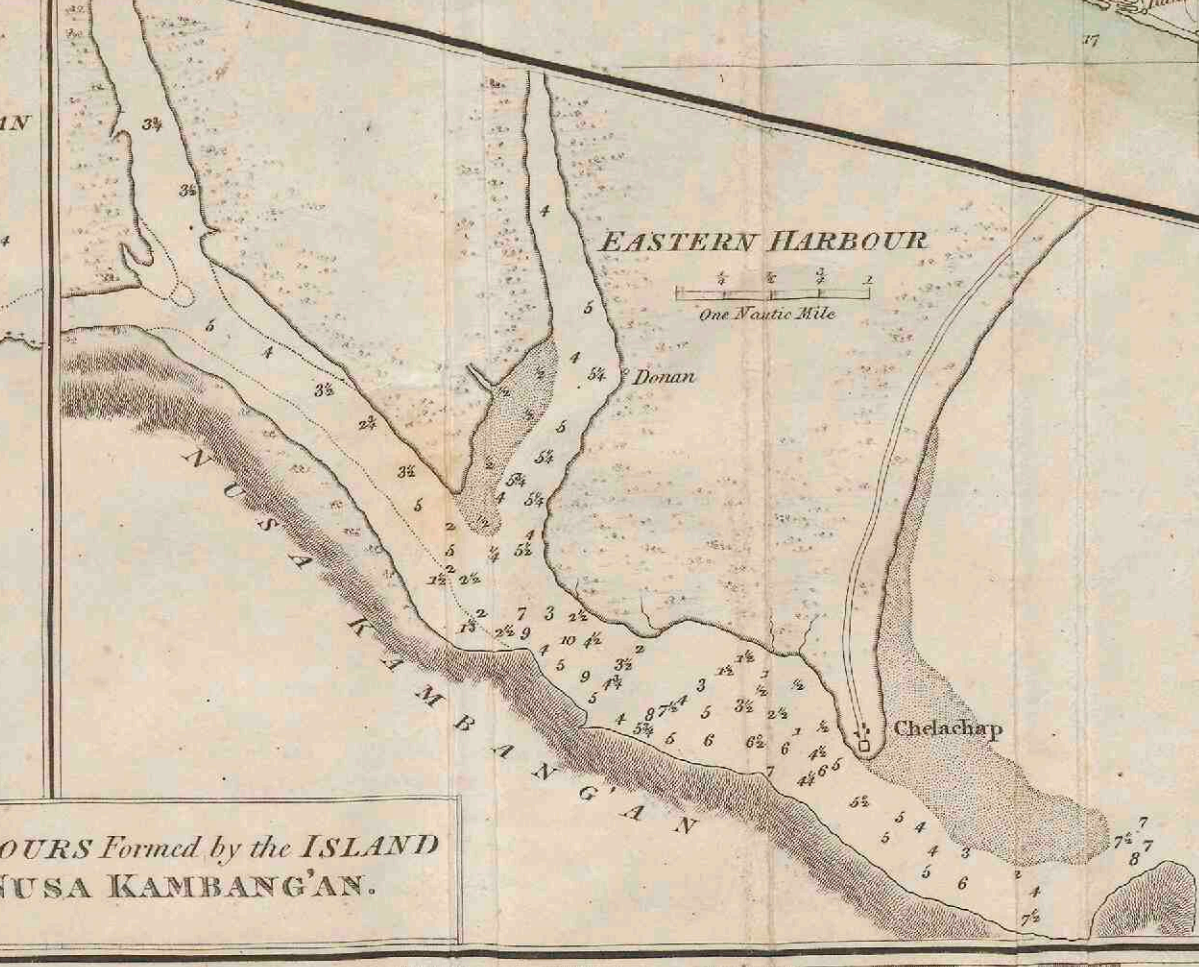
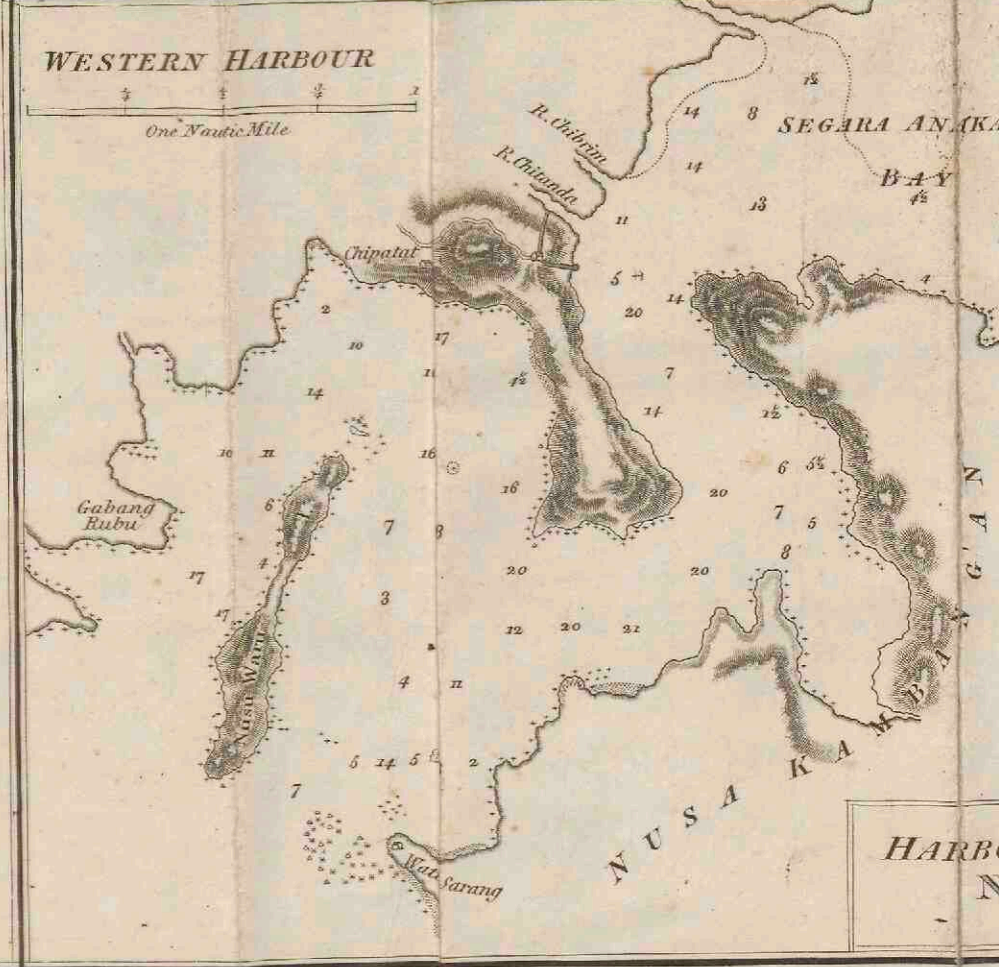
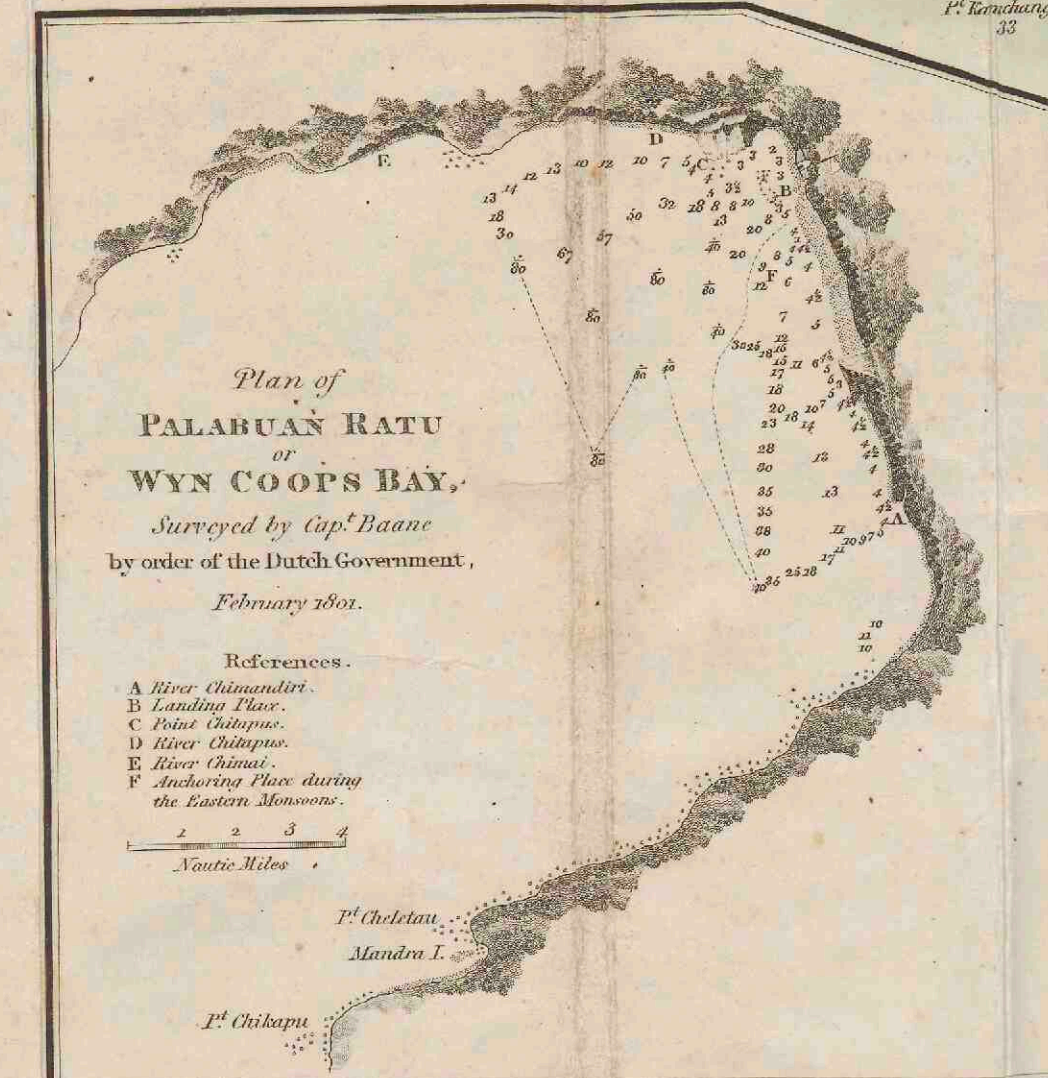




DIVISIONS.		Popul <sup>r</sup> .	Sq. Miles.
Batavia	Incl. the Environs	275,000	2,411
Buitenzorg		70,000	1,504
Batavia & Pringins (Changai, Bandung, Samarang, Sukapura)		245,000	10,000
Benyasin	Incl. the Environs and Indramayu	100,000	1,500
Cheribon		100,000	1,500
Tegal	Inc. Tegal and Pemalang	100,000	1,500
Pekalongan	Inc. Pekalongan and Batang	100,000	1,500
Samarang	Inc. Sidareja, Semarang and Demak	100,000	1,500
Kedu		100,000	1,500
Grobogan & Jipang		100,000	1,500
Jepara	Inc. Jepara, Pati and Kudus	100,000	1,500
Rembang	Inc. Rembang, Madiun and Tuban	100,000	1,500
Gresik	Inc. Gresik and Lamongan	100,000	1,500
Sambaya	Inc. Sambaya, Japara and Wonorejo	100,000	1,500
Pasuruan	Inc. Malang, Pasuruan and Bangsi	100,000	1,500
Probolinggo	Inc. Probolinggo, Pasuruan, Lamongan & Ponorogo	100,000	1,500
Banyuwangi		100,000	1,500
Native Provinces.			
Cheribon		100,000	1,500
Cheribon & Paksi		100,000	1,500
MADURA.			
Bangkalan & Pamekasan		100,000	1,500
Sumanap	Incl. the dependent Islands	100,000	1,500
		<b>Total</b>	<b>2,500,000</b>



**A Map of  
 JAVA**  
 Chiefly from Surveys made during the  
 British Administration  
 Constructed in illustration of an  
 ACCOUNT OF JAVA  
 By Thomas Stamford Raffles Esq.<sup>re</sup>  
 and Engraved by  
 J. Walker.



HARBOURS FORMED BY THE ISLAND  
 NUSA KAMBANGAN.