

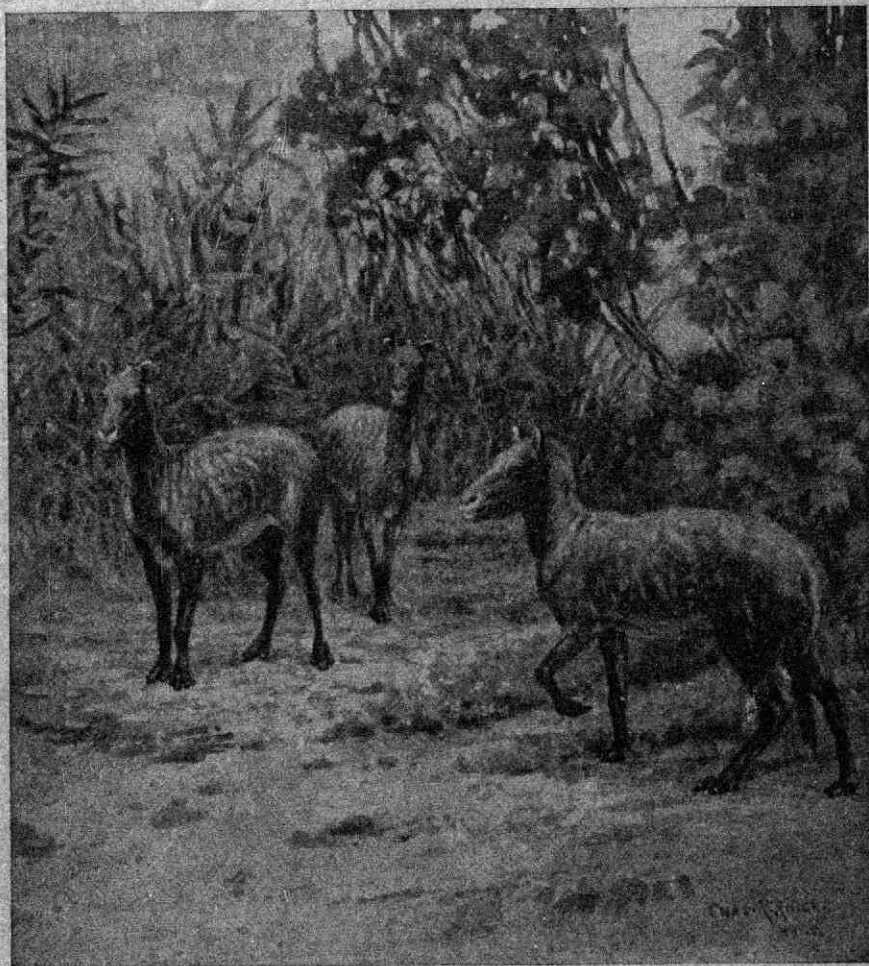


Evolution of the horse

<https://hdl.handle.net/1874/30316>

AMERICAN MUSEUM OF NATURAL HISTORY

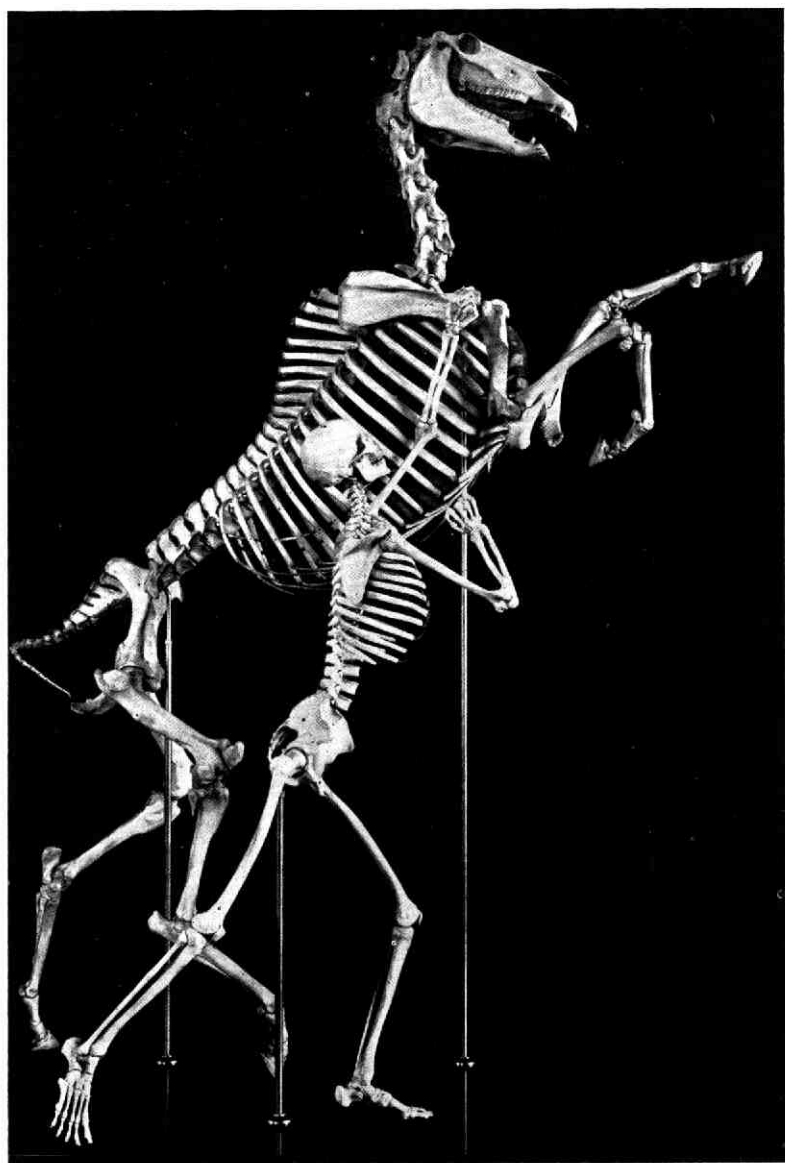
Evolution of the Horse



EOHIPPIUS, THE FOUR-TOED HORSE

Restoration of the earliest known Ancestor of the Modern Horse, discovered
in the bad lands of Wyoming

NO. 36 OF THE GUIDE LEAFLET SERIES — SEPTEMBER, 1913



After Osborn

SKELETON OF HORSE AND MAN

Mounted for comparative study. Gift of the late William C. Whitney to the American Museum of Natural History

v. f. B. 1120

J. E. B.

Evolution of the Horse

No. 1 of the Series to Illustrate
EVOLUTION AMONG FOSSIL MAMMALS

AMERICAN MUSEUM OF NATURAL HISTORY

IN TWO PARTS

Evolution of the Horse in Nature

By W. D. MATTHEW

The Horse under Domestication: Its Origin and the Structure and Growth of the Teeth

By S. H. CHUBB

GUIDE LEAFLET SERIES, NO. 36
NEW YORK, MARCH, 1913
PUBLISHED BY THE MUSEUM

Bibliotheek der
Rijksuniversiteit te Utrecht
Afd. Diergeschiedkunde

NO. 36

OF THE

GUIDE LEAFLET SERIES

OF THE

AMERICAN MUSEUM OF NATURAL HISTORY

THIRD EDITION, REVISED AND ENLARGED

Published under the direction of Henry Fairfield Osborn, President of the Board
of Trustees of the Museum, Curator Emeritus of Fossil Vertebrates

MARY CYNTHIA DICKERSON, Editor

CONTENTS

PART I. EVOLUTION OF THE HORSE IN NATURE

	Page
INTRODUCTION	9
FOSSIL HORSES OF THE AGE OF MAN	12
EVOLUTION OF THE HORSE	14
Four-toed Horses	14
Three-toed Horses	17
One-toed Horses	21
Conclusions	22
MEANING OF THE CHANGE IN FEET AND TEETH	25
CAUSE OF THE EVOLUTION	31
PARALLEL EVOLUTION IN OTHER RACES	32

PART II. THE HORSE UNDER DOMESTICATION

ORIGIN OF THE DOMESTIC HORSE	37
COMPARISON OF THE SKELETON OF HORSE AND MAN	39
THE DRAFT HORSE	39
DEVELOPMENT OF GREAT SIZE IN THE DRAFT HORSE	41
THE SHETLAND PONY	41
THE ARABIAN HORSE	42
THE RACE HORSE	43
THE TEETH OF THE HORSE	44
Structure of the Teeth	46
Wear and Compensating Movement of the Incisors	48
Designation of the Teeth	50
Wolf Tooth of the Horse	51
Premolars and Molars of the Horse	52
Eruption of the Teeth of the Horse	58
Shedding the Teeth	60
PRINCIPAL LITERATURE ON THE EVOLUTION OF THE HORSE	61
INDEX	63

LIST OF ILLUSTRATIONS

Fig.		Page
	Skeleton of Horse and Man	<i>Frontispiece</i>
1.	Evolution of the Horse	8
2.	Evolution of the Fore Foot. Principal Stages	10
3.	Evolution of the Hind Foot. Principal Stages	11
4.	Upper Teeth, <i>Eohippus</i>	15
5.	Upper Teeth, <i>Orohippus</i>	16
6.	Upper Teeth, <i>Epähippus</i>	16
7.	Upper Teeth, <i>Mesohippus</i>	17
8.	Little Three-toed Horse (<i>Mesohippus bairdi</i>) and Four-toed Horse (<i>Eohippus venticolus</i>)	18
9.	Skeleton of Three-toed Desert Horse (<i>Hipparion whitneyi</i>)	19
10.	Upper Teeth, <i>Parahippus</i>	20
11.	Upper Teeth, <i>Merychippus</i>	20
12.	Upper Teeth, <i>Hipparion</i>	21
13.	Upper Teeth, <i>Equus</i>	22
14.	Skeleton of Extinct American Horse (<i>Equus scotti</i>)	23
15.	Skeleton of Short-limbed Horse, <i>Hippidium</i>	24
16.	Geological and Geographical Range of Ancestors of Horse	25
17.	Evolution of the Fore Leg. Principal Stages	26
18.	Evolution of the Hind Leg. Principal Stages	27
19, 20.	Evolution of the Teeth	28
21.	Evolution of the Hind Foot of the Horse	30
22.	Fore and Hind Feet. Three-toed Pseudo-horse	32
23.	Fore and Hind Feet. One-toed Pseudo-horse	33
24.	Evolution of the Horse	34, 35
25.	Giant Draft Horse and Shetland Pony	36
26.	Draft Horse Pulling Heavy Load (Skeleton)	38
27.	Arabian stallion "Nimr" (Skeleton)	38
28.	Draft Horse. Rear view showing action of pelvis and backbone	40
29.	Famous American Race Horse "Sysonby"	45
30.	Incisor Teeth showing different degrees of specialization	47
31.	Incisor Teeth showing wear and movement	47
32.	Designation of Teeth	51
33.	Wearing Surface of Upper Grinding Teeth	53
34.	Sections of Upper Grinder of Horse	54
35.	Lower Premolar of Horse	55
36.	Deciduous Molar of Colt	56
37.	Dental Battery of Adult Horse	57
38.	Dentition of the Colt	59

PREFACE

Among all the animals of past and present there is none so deserving of our interest and affection as the horse. It is the most useful of the domestic animals, and has played the largest part in the development of civilization. Since the dawn of recorded history the man with the horse has been in the forefront of progress. Whether leading the military civilizations of the past or breaking ground for the industrial civilization of the present the pioneers and leaders of progress have always made large use of this noble animal. It is not too much to say that without his help our ancestors in the Old World might have advanced but little further on the road to civilization than did the inhabitants of the ancient semi-civilized states of Peru and Mexico, where the horse was unknown, and travel, agriculture and military success were limited by the capacity of unaided human strength.

From another point of view the horse is of peculiar interest. It is one of the most perfect machines for swift running that exists among living animals and displays throughout its organization the most exact and finished mechanism adapted to this purpose. It is perhaps the finest example of what nature acting through millions of years, has been able to accomplish in the way of adapting a large quadruped to speed over long distances, and likewise of the extent to which man, during the few thousand years that he has controlled its development, has been able to improve upon nature, in the sense of adapting it to serve more exactly his own purpose.

The history of this adaptation, continued over millions of years, constitutes the evolution of the horse. Its records consist of the actual skeletons of the successive stages in the development of the race. Buried in ancient river deposits, petrified and preserved to our day in the successive geological strata, they have been discovered and disinterred through the diligent search of scientists during the last fifty years.

This Museum has taken especial interest in the evolution of the horse. The records of this history are most completely preserved in the western United States, and through the liberality of the trustees of the American Museum, and in particular through special funds provided by the late William C. Whitney, by Professor Henry Fairfield Osborn and by other trustees and friends of the Museum, Messrs. James R. Keene, Randolph Huntington, F. K. Sturgis and others, we have obtained, from expeditions, gifts and purchases, many thousand specimens of fossil species, illustrating numerous successive stages in horse ancestry; and a unique series illustrating the diverse breeds of the domesticated animal and the structure and growth of its teeth and skeleton, so marvelously suited to its requirements.

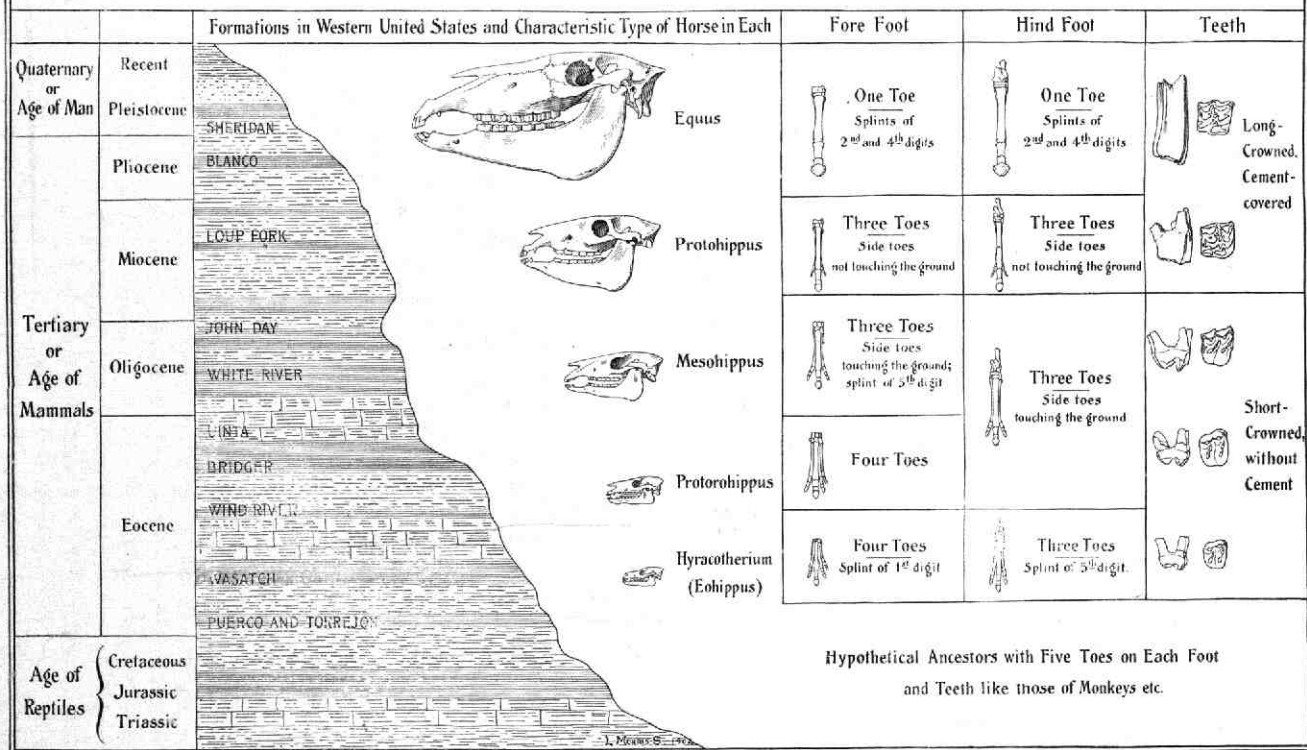
Such parts of the collection as might best serve to illustrate the subject have been placed on exhibition in the hall of fossil mammals. These exhibits show

1. THE EVOLUTION OF THE HORSE IN NATURE
2. THE EVOLUTION OF THE HORSE UNDER DOMESTICATION

The collections have been gathered together and arranged under the direction and supervision of Professor Henry Fairfield Osborn. Scientific descriptions of parts of the material have been published from time to time by Professor Osborn and his assistants and an extensive monograph on the evolution of the horse is now in preparation.

W. D. MATTHEW

THE EVOLUTION OF THE HORSE.



Part I. EVOLUTION OF THE HORSE IN NATURE

By W. D. Matthew, Ph.D.

Curator, Department of Vertebrate Palaeontology

INTRODUCTION

AS a domestic animal the horse is to be found almost everywhere that man can live. He is spread all over the world — from torrid to arctic climates, in all the continents, in remote oceanic islands — he is completely cosmopolitan. But as a wild animal the horse is at present limited to the Old World, and is found there only in the open arid or desert plains of Central Asia and Africa. There are two species in Asia, the Asiatic wild ass (*Equus hemionus*) and the little known Przewalsky horse (*Equus przewalskii*), while in Africa there are the African wild ass (*Equus asinus*) and the several species of zebra (*Equus zebra*, *Equus burchelli*, *Equus grevyi*). In the Americas and Australia there are no true wild horses, the mustangs and broncos of the Western Plains and South America being feral (domesticated animals run wild) and descended from the horses brought over from Europe by the early white settlers. When the Spaniards first explored the New World they found no horses on either continent. The Indians were quite unfamiliar with them and at first regarded the strange animal which the newcomers rode, with wonder and terror, like that of the ancient Romans when Pyrrhus and his Greeks brought elephants — “the huge earth-shaking beasts” — to fight against them.

The horse is distinguished from all other animals now living by the fact that he has but one toe on each foot. Comparison with other animals shows that this toe is the third or middle digit of the foot. The hoof corresponds to the nail of a man or the claw of a dog or cat, and is broadened out to afford a firm, strong support on which the whole weight of the animal rests. Behind the “cannon bone” of the foot are two slender little bones, one on each side, called “splint bones.” These represent the second and fourth digits of other animals, but they do not show on the surface and there is nothing like a separate toe. So that the horse may be said to be an animal that walks on its middle finger nail, all the other fingers having disappeared.

The teeth of the horse are almost equally peculiar. The molars are long, square prisms which grow up from the gums as fast as they wear off on the crowns. Their grinding surface exhibits a peculiar and complicated pattern of edges of hard enamel between which are softer spaces composed of dentine and of a material called “cement,” much like the dentine in quality but formed in a different way. The dentine is formed on the inside surfaces of the enamel while the tooth is still within the jawbone; the cement is deposited on the outside surfaces of the enamel after the tooth has broken through the jawbone and before it appears above the gums.

Various other peculiarities distinguish the horse from most other animals; some of these are shared by other hoofed animals. The two long bones of the forearm (radius and ulna) are separate in the greater number of animals, but in the horse and in many other hoofed animals, they are consolidated into a single bone (See Fig. 17, p. 26). The

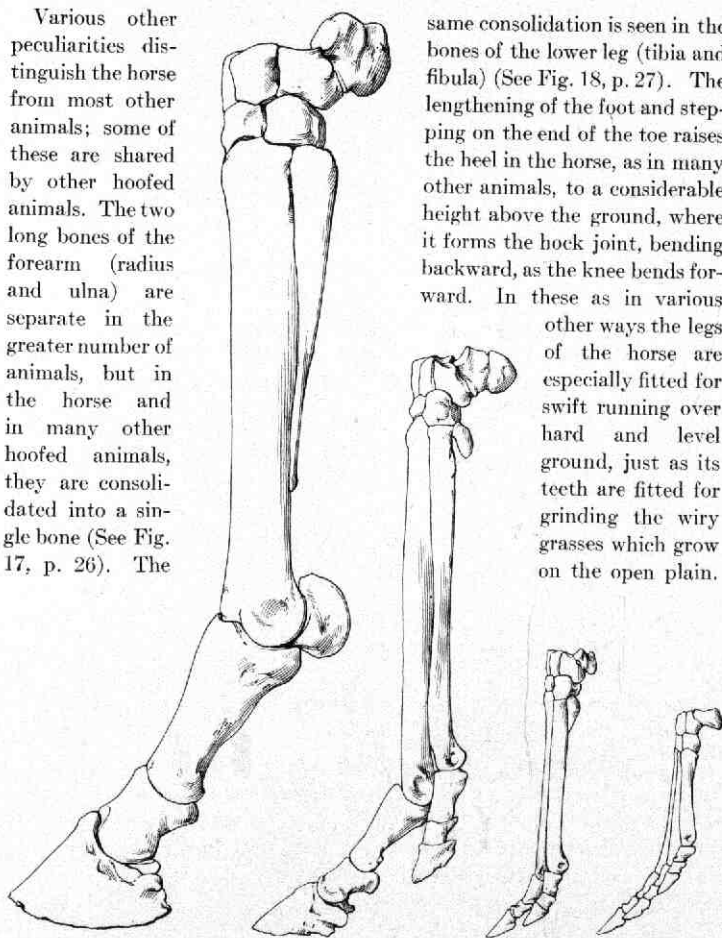


FIG. 2. EVOLUTION OF THE FORE FOOT. PRINCIPAL STAGES

(Right to Left)

1. Four-toed horse *Eohippus*. Eocene Epoch
2. Early three-toed horse *Mesohippus*. Oligocene Epoch
3. Later three-toed horse *Merychippus*. Miocene Epoch
4. One-toed horse *Equus*. Pleistocene Epoch and Modern

All outside views showing the middle and outer digits of the fore foot. In *Eohippus* the two outer toes (digits IV and V) are complete. In *Mesohippus*, digit V is reduced to a small splint and digit IV is notably smaller than the middle digit. In *Merychippus*, digit V is a tiny nodule of bone and digit IV has become very slender in comparison with the middle digit. In *Equus* digit IV is reduced to a long splint, while of the fifth digit no trace remains

same consolidation is seen in the bones of the lower leg (tibia and fibula) (See Fig. 18, p. 27). The lengthening of the foot and stepping on the end of the toe raises the heel in the horse, as in many other animals, to a considerable height above the ground, where it forms the hock joint, bending backward, as the knee bends forward. In these as in various other ways the legs of the horse are especially fitted for swift running over hard and level ground, just as its teeth are fitted for grinding the wiry grasses which grow on the open plain.

The zebra and the ass have the same peculiar structure of teeth and feet as the domestic horse, and differ only in the color of the skin, proportions of various parts of the body, etc.

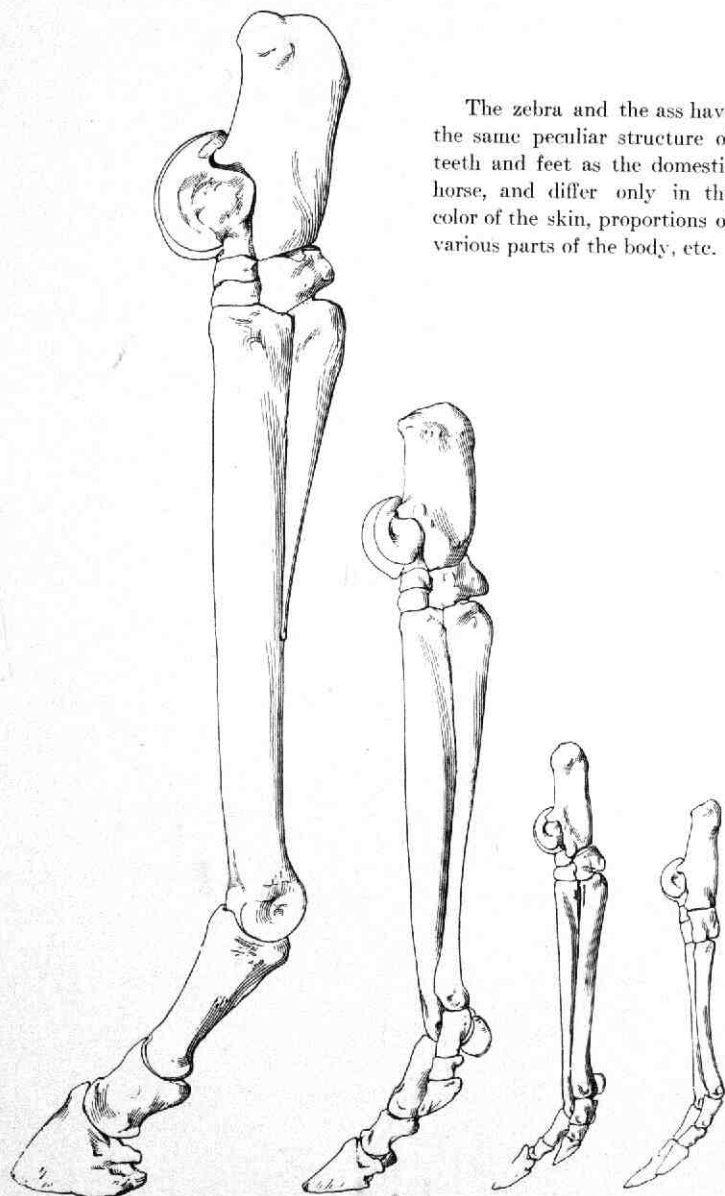


FIG. 3. EVOLUTION OF THE HIND FOOT. PRINCIPAL STAGES

(Right to Left) 1. *Eohippus*, Eocene Epoch; 2. *Mesohippus*, Oligocene; 3. *Merychippus*, Miocene; 4. *Equus*, Pleistocene and Modern

Outer views showing middle and outer digits. Note progressive reduction of side toe (digit IV) from a well developed digit to a splint bone

FOSSIL HORSES OF THE AGE OF MAN

THE Age of Man, or Quaternary Period, is the last and by far the shortest of the great divisions of geological time. It includes the Great Ice Age or Glacial Epoch (Pleistocene), when heavy continental glaciers covered the northern parts of Europe and North America, and the Recent Epoch, of more moderate climate during which civilization has arisen.

In the early part of the Quaternary Period, wild species of horse were to be found on every continent except Australia. Remains of these true native horses have been found buried in strata of this age in all parts of the United States, in Alaska, in Mexico, in Ecuador, Brazil and Argentina, as well as in Europe, Asia and Africa. All these horses were much like the living species and most of them are included in the genus *Equus*. Mr. J. W. Gidley, in charge of the American Museum expedition in northern Texas, discovered in 1899 a number of more or less complete skeletons of a species of fossil horse, *Equus scotti*, in an old river deposit on Rock Creek in Donley County. These are the most complete specimens known of the extinct horses which inhabited this country at the beginning of the Ice Age. A mounted skeleton and several skulls have been placed on exhibition, and their near resemblance to the modern animal appears at a glance. The difference from the domestic horse is chiefly in proportions: the skull is shorter with deeper jaws, the legs rather short and the feet small in proportion to the body. In these characters this fossil horse resembles an overgrown zebra rather than a domestic horse. We know nothing of its coloring. It may have been striped, and in this case would have been very zebra-like; but there are some reasons for believing that it was not prominently striped. The bones are petrified, brittle and heavy, the animal matter of the bone having entirely disappeared and having been partly replaced by mineral matter. They are not much changed in color however, and are so perfectly preserved that they look almost like recent bone.

All the remains of these native horses which have been found in America have been petrified more or less completely. This means that they have been buried for many thousands of years, for true petrification is an exceedingly slow process. This condition serves as an easy means of distinguishing them from bones of the domestic horse, found buried in the earth. These cannot in any case have been buried for more than three or four centuries, and have not had time to petrify.

Remains of these fossil horses from various parts of the United States are shown in the counter cases. One very rich locality is on the Niobrara River in Nebraska, another is in central Oregon. Many separate teeth and bones have been found in the phosphate mines near Charleston, South Carolina; other specimens have come from central Florida, from southern Texas, Arizona, Kansas, Louisiana and even from Alaska. They are, in fact, so often found in deposits of rivers and lakes of the latest geological

epoch (the Pleistocene) that the formation in the western United States has received the name of "Equus Beds."

In South America, in strata of the Pleistocene Epoch, there occurs, besides several extinct species of the genus *Equus*, the *Hippidium*, a peculiar kind of horse characterized by very short legs and feet, and some peculiarities about the muzzle and the grinding teeth. The legs were hardly as long as those of a cow, while the head was as large as that of a race horse or other small breed of the domestic horse.

All these horses became extinct, both in North and South America. Why, we do not know. It is very probable that man — the early tribes of prehistoric hunters — played a considerable part in their disappearance, not indeed by killing them all off directly, but by continual hunting and chasing, driving them from the best feeding-grounds and interfering with their habits and opportunities for grazing. This persecution would tend to reduce their numbers and vigor, and be the prelude to their extinction. The competition with the bison and the antelope, which had recently migrated to America, may also have made it more difficult than formerly for the American horse to get a living. And finally, some epidemic disease or prolonged season of drought may have exterminated the race. Whatever the cause, the horse had disappeared from the New World when the white man invaded it (unless a few individuals still lingered on the remote plains of South America), and in his place the bison had come and spread over the prairies of the North.

Fossil horses are equally common in the Pleistocene formations of the Old World. They have been found in all parts of Europe and Asia, in North and South Africa, but not in Australasia, the East Indies or Madagascar. In Central Asia, two wild races persist to the present day; others were domesticated by man in the earliest times, and their use in Chaldea and Egypt for draft and riding is depicted in the ancient mural paintings. In Africa the larger species became extinct in prehistoric times, as in America but the smaller zebras still survive in the southern part of the continent (One species, the quagga, abundant fifty years ago, is now extinct), and the African wild ass is found in the fauna of the northern part. The wild horse of prehistoric Europe, a small race, short-legged and shaggy-haired, was domesticated by man, a fact that is known from the rude drawings scratched on bone or ivory by men of the Neolithic or Polished Stone Age. But the domesticated horses now in use are derived chiefly from the Asiatic and African species¹ although it is probable that in some breeds there is a considerable strain of this shaggy, short-legged European race. The domesticated ass is a descendant of the wild ass (*Equus asinus*) of North Africa.

¹They are probably derived from three different wild sources which Professor Cossar Ewart has called the Forest Type of Northern Europe, the Steppe Type of Northern Asia, resembling the Przewalsky horse, and the Plateau or Desert Type of Northern Africa, resembling the Arabian.— Henry Fairfield Osborn.

THE EVOLUTION OF THE HORSE

THE history of the evolution of the horse through the Tertiary Period or Age of Mammals affords the best known illustration of the doctrine of evolution by means of natural selection and the adaptation of a race of animals to its environment. The ancestry of this family has been traced back to near the beginning of the Tertiary without a single important break. During this long period of time, estimated at nearly three millions of years, these animals passed through important changes in all parts of the body, but especially in the teeth and feet, adapting them more and more perfectly to their particular environment, namely the open plains of a great plateau region with their scanty stunted herbage, which is the natural habitat of the horse.

In the series of ancestors of the horse we can trace every step in the evolution of those marked peculiarities of teeth and feet which distinguish the modern animal from an ancestor which so little suggests a horse that when its remains were first found forty years ago, it was named by the great paleontologist, Richard Owen, the *Hyracotherium* or "coney-like beast." Its relation to the horse was not at that time suspected by Professor Owen, and was recognized by scientific men only when several of the intermediate stages between it and its modern descendant had been discovered. On the other hand this first ancestor of the horse line is very difficult to distinguish from the contemporary ancestors of tapirs and rhinoceroses, and indicates how all the modern quadrupeds have diverged from a single type, each becoming adapted to the needs of its especial mode of life.

FOUR-TOED HORSES

THE earliest known ancestors of the horse were small animals not larger than the domestic cat, with four complete toes on each fore foot and three on each hind foot. There is reason to believe that the still more ancient ancestors of this and all other mammals had five toes on each foot. In the fore foot of the earliest known stage there may have been a small, slender rudiment representing the missing first digit or thumb, which no longer appeared on the surface of the foot,¹ while in the hind foot there is a similar rudiment representing the outer or fifth digit, and also a tiny remnant of the innermost or first digit. The proportions of the skull, the short neck and arched back and the limbs of moderate length, were very little horselike — recalling on the contrary, some modern carnivorous animals, especially the civets (*Viverridæ*). The teeth were short-crowned and covered with low rounded knobs of enamel, suggesting those of monkeys and of pigs or other omnivorous animals, but not at all like the long-crowned complicated grinders of the horse.

¹ It is shown in Marsh's well known diagram; but there is no conclusive evidence of its presence on any specimen yet found.

Commencing with the *Hyracotherium*, twelve stages have been recognized from as many successive formations, showing the gradual evolution of the race into its modern form, and each stage is characteristic of its particular geological horizon. Some of the stages have been found in several parts of the world, but by far the most complete and best known series comes from the Tertiary Badlands of the western United States. Besides the main line of descent which led into the modern horses, asses and zebras, there were several collateral branches which have left no descendants. Of some stages all parts of the skeleton have been found; of others only the jaws, or jaws and feet, are known. We can mention only the more important stages.

1 and 2.¹ **Hyracotherium** and **Eohippus**. LOWER EOCENE. The *Hyracotherium* is the most primitive stage known, but only the skull has been found, so that it has not been determined exactly what the feet were like. The teeth display six rounded knobs or cusps on the upper molars and four on the lower ones, and these are just beginning to show signs of fusing into cross-crests. The premolar teeth have only one main cusp, except the third and fourth premolars (next the molars) in each jaw, which have two and three, respectively. The only specimens which have been found were in the London Clay or Lower Eocene of England and are preserved in the British Museum.



Fig. 4. *Eohippus*. Lower Eocene. Upper teeth, natural size. Short-crowned teeth, no cement, premolars simpler and smaller than molars

The *Eohippus* is much better known. It comes from the Lower Eocene of Wyoming and New Mexico, and is very like the *Hyracotherium*.²

except that in some species the molar teeth have the cusps more clearly fusing into cross-crests; the last premolar is beginning to look like one of the true molars. The fore foot of this animal has four complete toes. The hind foot has three complete toes and the splint of another.³ A skeleton of *Eohippus* was found by Dr. J. L. Wortman in 1880 in the Wind River Badlands of Wyoming, and was described by Professor Cope in 1885. It was until recently the only skeleton known of a four-toed horse, and is well known to the scientific world. It was purchased by the trustees of the American Museum in 1894 and is now on exhibition.

A second skeleton found by the Museum expedition of 1910, is of a larger species, but not advanced in any other respect. It is mounted in a grazing attitude, and probably represents the general appearance of *Eohippus* more truly than the Cope skeleton. A third imperfect skeleton secured in 1911 is interesting as it shows the tiny splint bone of the inner digit of the

¹ These numbers refer to the stages in the direct line of descent of the modern horse.

² It is doubtful whether it is a distinct genus.

³ See preceding page.

hind foot, indicated by facets in other specimens but not actually found before. Crushed skulls, jaws and fragments of skeleton bones of thousands of individuals have been found in the Lower Eocene formations.

3. **Orohippus.** MIDDLE EOCENE. In this animal the splint of the fifth digit of the hind foot has disappeared, but there are still four complete and usable toes in the fore and three in the hind foot. The crests on the molars are a little clearer and the last premolar has become almost like the molars, while the next to the last premolar is partially molariform. A skeleton of *Orohippus*, discovered by Mr. Walter Granger of the Museum expedition of 1906, in the Bridger Badlands of southwestern Wyoming, is exhibited next to the *Eohippus* skeleton. It shows an animal of the size of a small dog and proportioned much like the breed known as the *whippet*.

The *Orohippus* was of about the same size and proportions as some of the pigmy antelopes or duikerboks (*Cephalophus*), which live in the open forests and brush country of East and South Africa, and have gained their name from the quickness with which they can dive or "duck" into the tall grass and jungle on the approach of danger.



Fig. 5. *Orohippus*. Middle Eocene. Upper teeth, natural size. Short-crowned teeth, no cement, fourth premolar like molars



Fig. 6. *Epihippus*. Upper Eocene. Upper teeth, natural size. Short-crowned teeth, no cement, third and fourth premolars like molars

4. **Epihippus.** UPPER EOCENE. Of this stage of the evolution of the horse only incomplete specimens have been found. The molar teeth have the once round cusps almost completely converted into crescents and crests, while another tooth of the premolar series has become like

the molars. The toes are still four in the fore foot and three in the hind foot, but the central toe in each foot is becoming much larger than the side toes.

Palæotherium and *Plagiolophus* of the Upper Eocene of Europe form a side branch of the horse line. They were very abundant in Europe, but have not been found in the New World. One of these animals was thought by Professor Huxley to be a direct ancestor of the horse, but it is now considered to be merely a collateral relative. Some species of *Palæotherium* were of large size, equal to a tapir. They were first described in the year 1804 by the celebrated Baron Cuvier from remains found in the gypsum quarries of Montmartre, Paris.

THREE-TOED HORSES

5, 6 and 7. **Mesohippus** and **Miohippus**. OLIGOCENE. In this stage there are three toes on each foot, and a splint representing the fifth digit of the fore foot of the Eocene ancestors. The middle toe is now much larger than the side toes, which bear very little of the weight of the animal. Three of the premolars have now become entirely like the molar teeth, the crests on the crown are completely formed, and the outside crest in the upper molars has taken the shape of two crescents. In the Lower and Middle Oligocene are found several species of *Mesohippus* mostly of the size of a coyote, represented by two mounted skeletons, and various skulls, jaws and feet. In the Upper Oligocene occurs *Miohippus intermedius* as large as a sheep, of which a fine skeleton is exhibited in the pavilion case. Several other species of larger or smaller size are represented by skulls and jaws.

The series of skeletons in the pavilion case shows in a very striking way the steady increase in size from the Lower Eocene to the Upper Oligocene, and the reduction of the side toes with concentration of the weight upon the middle toe.

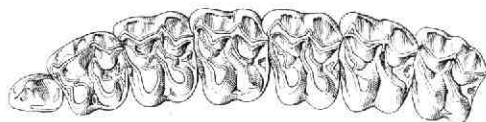


Fig. 7. *Mesohippus*. Middle Oligocene. Upper teeth, natural size. Short-crowned teeth, no cement, second, third and fourth premolars like molars

8a. **Anchitherium** and **Hypohippus**. MIOCENE. *Anchitherium* has been found only in Europe, and is still very incompletely known. It is much like *Mesohippus*, but is larger and has the crests of the teeth somewhat higher and more complete. *Hypohippus* is off the direct line of descent; its teeth are like those of *Anchitherium*, by which name it has been generally called, but the animal was much larger, equalling a Shetland pony in size. A complete skeleton of the *Hypohippus* (shown in wall case) was found near Pawnee Buttes, Colorado, in 1901 by Mr. Barnum Brown, of the Whitney expedition.

Hypohippus first appears in the Middle Miocene, and survives along with more advanced stages of the three-toed horses. It is a larger and more heavily proportioned animal; the wide flat hoofs and strong side toes enabled it to tread on soft ground, and the teeth are fitted for browsing rather than grazing. Hence Professor Osborn considers it as adapted for a forest life, and has named it the "three-toed forest horse." The restoration illustrates this supposed habitat and adaptation.

8 and 9. **Parahippus**. MIOCENE. In *Parahippus* the tooth-crests are somewhat higher, and the transverse ridges on the upper molars are beginning to change shape so as to become a second pair of crescents inside the

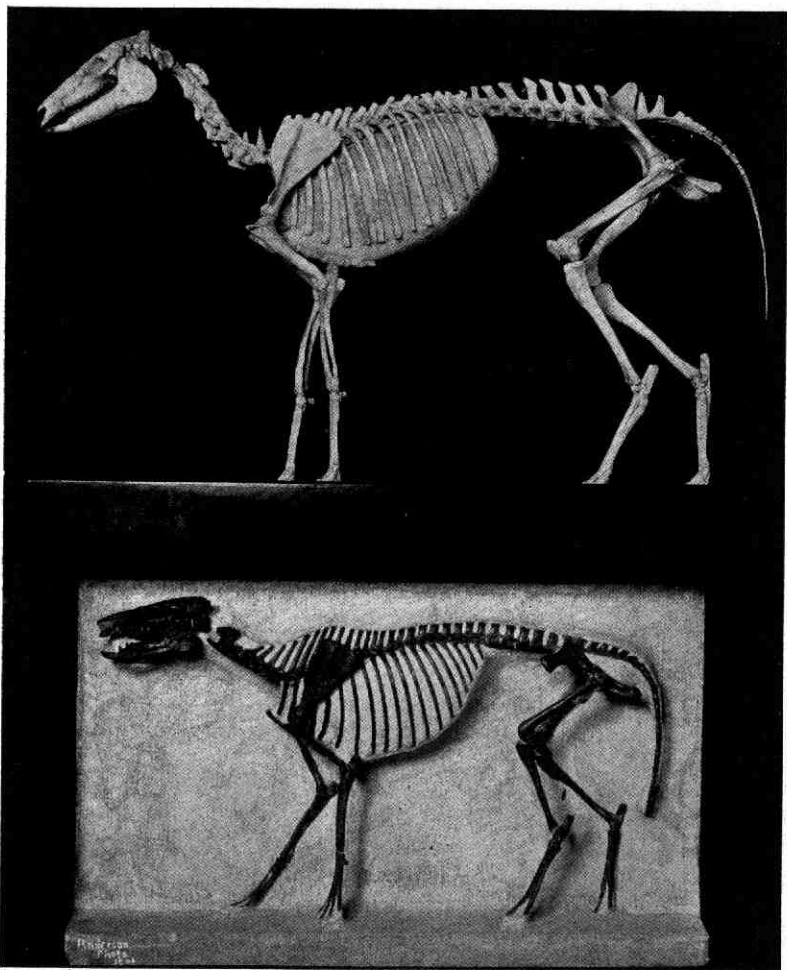


Fig. 8. Little three-toed horse (*Meshippus bairdi*) from the Middle Oligocene of South Dakota. American Museum, No. 1492

Four-toed Horse (*Eohippus venticolus*) from the Lower Eocene of Wyoming. American Museum, No. 4832

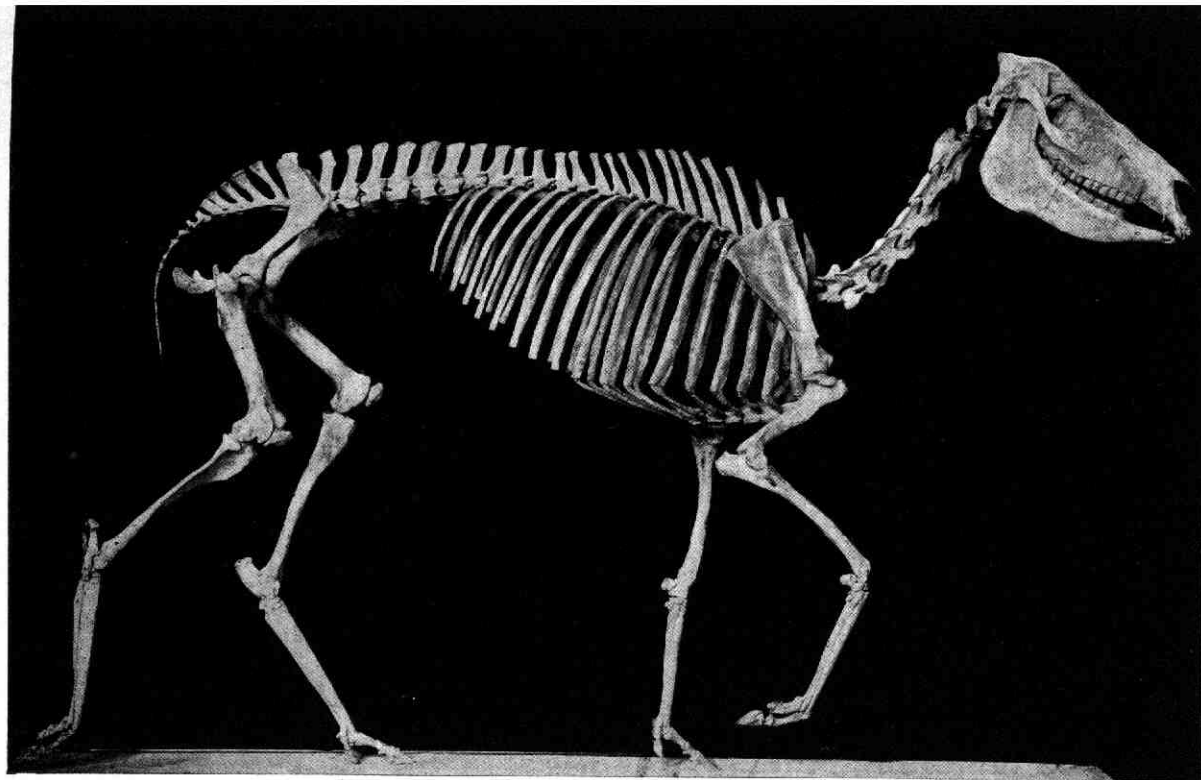


FIG. 9. SKELETON OF THREE-TOED DESERT HORSE (*Hipparion whitneyi*)
From the Upper Miocene of South Dakota. American Museum No. 9815

After Osborn

outer pair. In the valleys between the cross-crests and on the sides and base of the crown, a deposit of cement appears on the surface of the enamel. In some species there is a considerable amount, but usually it is a very thin coat. There is no cement on the milk teeth. The feet show a decided advance over the preceding stages, the side toes are very slender, and no longer touch the ground. The fifth digit of the fore foot is in some species a very short small splint, in others it is still further reduced to a little irregular nodule of bone. This stage first appears in the Lower Miocene, and several skulls and incomplete skeletons have recently been obtained from formations of this age. It survived however, although rare, as a contemporary of the later three-toed horses.

10. **Merychippus.** MIDDLE MIOCENE.



Fig. 10. *Parahippus*. Lower Miocene. Upper teeth, one-half natural size. Short-crowned teeth, traces of cement. The teeth are larger than in *Mesohippus* [the drawing is on a smaller scale], the crowns a little longer, and the inner "crests" begin to show the change to "erescents"



Fig. 11. *Merychippus*. Middle Miocene. Upper teeth, one-half natural size. Moderately long-crowned teeth, well cemented

This stage marks the transition between the older short-crowned teeth without cement, and the long crowned heavily cemented teeth of the later stages. The permanent molars are intermediate in length of crown, and quite heavily cemented, but the milk molars are short crowned and have little or no cement; they are not easily distinguishable from those of *Parahippus*. The side toes are slender and no longer reach the ground; in some species they are almost reduced to splints.

Merychippus is common in the Middle and later Miocene, and many skulls, jaws and incomplete skeletons are contained in our collections, some of which are placed on exhibition. These very perfect specimens show a vestige of the fifth digit in the fore foot still preserved as a tiny nodule of bone at the back of the wrist.

11. **Hipparion, Protohippus and Pliohippus.** UPPER MIOCENE AND PLOCENE. These three closely related genera represent the latest stage of three-toed horses, before the side toes were reduced to splints. The teeth are long-crowned, both milk and permanent teeth being heavily cemented, and the side toes are extremely slender. They first appear in the Upper Miocene, probably directly descended from Middle Miocene species of *Merychippus*, and are best represented by the beautifully preserved skeleton

of *Hipparion whitneyi* from Little White River, South Dakota, found by Mr. H. F. Wells of the Whitney expedition of 1902. This species, except for the very large head, had the graceful and slender proportions of the antelopes, but in *Protohippus* and especially in *Pliohippus* the skeleton approached more nearly the stockier proportions of the modern horses. The *Hipparion whitneyi* is regarded by Professor Osborn as fitted to live in a semi-desert country, and in contrast to the *Hypohippus*, is called the "three-toed desert horse." The restoration depicts this adaptation and environment.

In this stage the crowns of the upper molars have become much longer, the two pairs of crescents on the upper molars are complete, with two half-separated cusps within the inner pair. And the valleys between the crests are completely filled with cement, so that with the wear of the teeth the edges of hard enamel are backed inside by dentine and outside by cement. In this way the surface of the tooth has a series of enamel ridges always projecting a little above the grinding surface, because the softer material on each side wears down into hollows, yet never breaking off, because they are braced so thoroughly on each side. This is a very efficient instrument for grinding hard grasses. The crowns of the teeth in these Miocene horses are by no means as long as in the modern horses; they must therefore have worn more slowly or worn out at an earlier age.

The feet in these genera have but one toe touching the ground. The side toes (second and fourth digits) are complete, but much more slender than in the earlier stages and are apparently useless, as they cannot reach the ground. In some species they have almost disappeared. The fore feet of these Upper Miocene horses still retain the tiny nodule of bone at the back of the "knee" (the joint that corresponds to the wrist of a man), which is the last remnant of the fifth digit possessed by their remote ancestors.

Hipparion is common in Europe and Asia as well as in North America, but *Protohippus* and *Pliohippus* are not found in the Old World.



Fig. 12. *Hipparion*. Upper Miocene. Upper teeth one-half natural size. Long-crowned teeth, heavily cemented

ONE-TOED HORSES

12a. **Equus.** PLEISTOCENE AND RECENT. In this stage, that of the modern horse, the side toes have entirely disappeared and are represented by splints on the fore and hind foot. No trace remains on the fore foot of the little nodule which in previous stages represented the fifth digit, while on the inner side of the wrist the "trapezium," always present in the earlier

stages, but progressively smaller, is now generally absent entirely. The crowns of the teeth are much longer, and of the two half-separated inner columns on the upper molars, one has disappeared, the other has increased in size and changed in form. The skull has lengthened and the animal is much larger.

It is well represented among the fossil horses by the skeleton and skulls of *Equus scotti* already noticed.



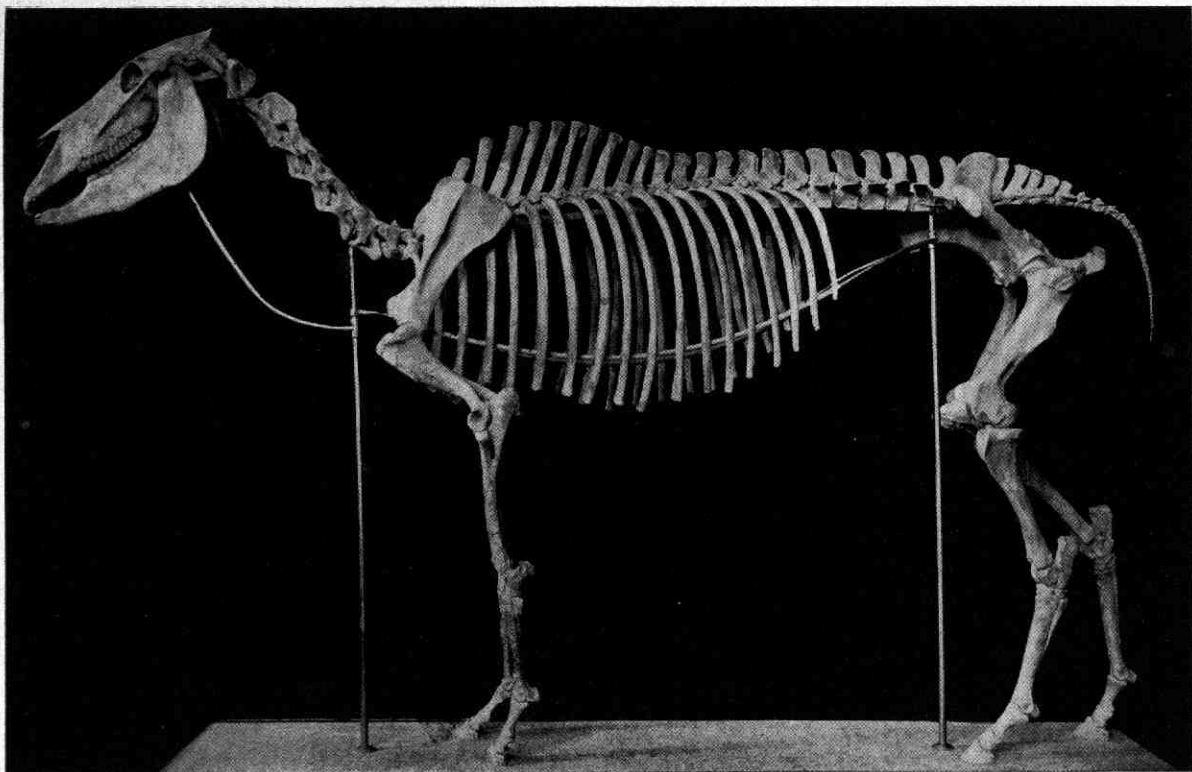
Fig. 13. *Equus*. Pleistocene. Upper teeth, one-half natural size. Very long-crowned teeth, heavily cemented

12b. **Hippidium.** PLEISTOCENE. SOUTH AMERICA. The feet are like those of *Equus*, except that they are short and stout. The teeth are like those of *Pliohippus*, from which it is supposed to be descended. The skull is large and long with very long slender nasal bones. A cast of the skeleton presented by the Museo Nacional of Buenos Ayres, Argentine Republic, is on exhibition.

CONCLUSIONS

THESE are the principal stages in the evolution of the modern horse from the little four-toed *Eohippus*. Intermediate between them are numerous minor stages, the earlier species of each genus being more primitive, the later species more advanced. The series of upper molar teeth shown in Figs. 19-20 show no wide differences from one stage to the next. But between most of them several intermediate species are known. This gradual change is seen not merely in one or a few selected parts, but in every bone, every tooth, every portion of the skeleton. Elsewhere in the hall may be found similar although less complete series leading up from animals very close to *Eohippus* into the modern tapir and rhinoceros. The conclusion is unavoidable that horse, rhinoceros and tapir, three races widely different to-day, are derived through progressive changes from a common ancestral type. New species may have appeared suddenly, but the race in its broader lines is the product of gradual evolution, and diverse races may be traced back to a more ancient common stock.¹

¹ Scientific criticisms of "Darwinism" are concerned with the way in which new species have appeared, whether by infinitesimal gradations or by finite "mutations," appreciable although usually small steps. The broader lines of evolution are not affected by these criticisms.



After Osborn

FIG. 14. SKELETON OF EXTINCT AMERICAN HORSE (*Equus scotti*)
From Lower Pleistocene of Texas. American Museum, No. 10608

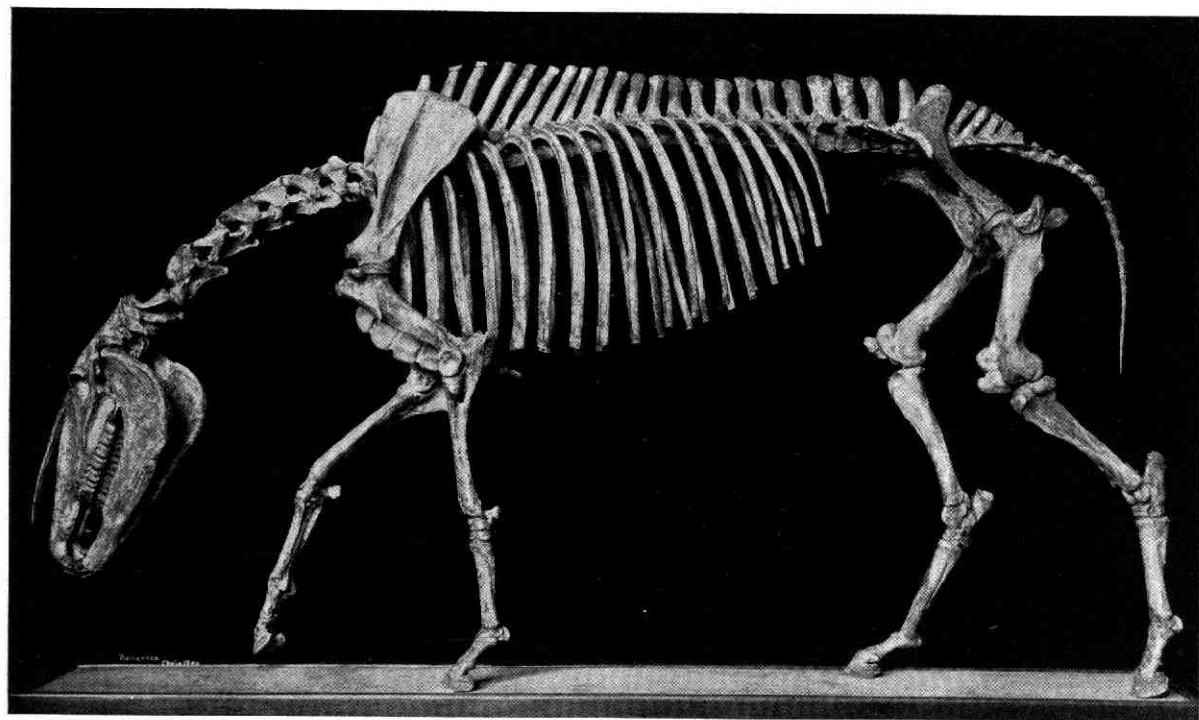


FIG. 15. SKELETON OF SHORT-LIMBED HORSE *Hippidium*
From Pleistocene of Argentine Republic. From a cast in the American Museum

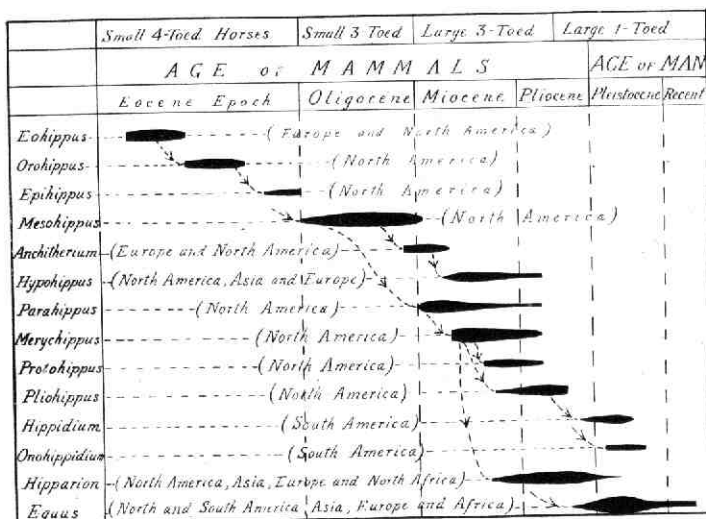


Fig. 16. Geological and geographical range of ancestors of the horse. The position and length of the heavy black lines show the occurrence and range of each genus in the successive geologic epochs, while the thickness of the lines indicates relative abundance. The dotted connecting lines with arrows indicate the genealogy

MEANING OF THE CHANGE IN FEET AND TEETH

ALONG with the disappearance of the side toes in the evolution of the horse there is a considerable increase in the proportionate length of the limbs, and especially of the lower part of the leg and foot. The surfaces of the joints, at first more or less of the ball-and-socket kind which allows free motion of the limb in all directions, become keeled and grooved like a pulley-wheel, permitting free motion forward and backward, but limiting the motion in all other directions and increasing considerably the strength of the joint. By this means the foot is made more efficient for locomotion over a smooth regular surface, but less so for traveling over very rough ground, and it becomes of little use for striking or grasping or the varied purposes for which the feet of polydactyl animals are used.

The increased length in the lower leg and foot increases the length of the stride without decreasing its quickness. The heavy muscles of the leg are chiefly in the upper part, and to increase the length of the lower part changes the centre of gravity of the limb very little. Consequently the leg swings to and fro from the socket nearly as fast as before, since in an ordinary step the action of the leg is like that of a pendulum, and the speed of the swing

is regulated by the distance of the centre of gravity from the point of attachment, as that of a pendulum is by the height of the bob. To increase the length of lower leg and foot therefore gives the animal greater speed; but it puts an increased strain on the ankles and toe-joints, and these

must be strengthened correspondingly by converting them from ball-and-socket joints to "ginglymoid" or pulley joints. Additional strength, likewise at the expense of flexibility, is obtained by the consolidation of the two bones of the forearm (ulna and radius) and of the leg (tibia and fibula) into one, the shaft of the smaller bone practically disappearing, while its ends become fused solidly to its larger neighbor.

The increase in length of limb renders it necessary for the grazing animal that the head and neck should increase in length in

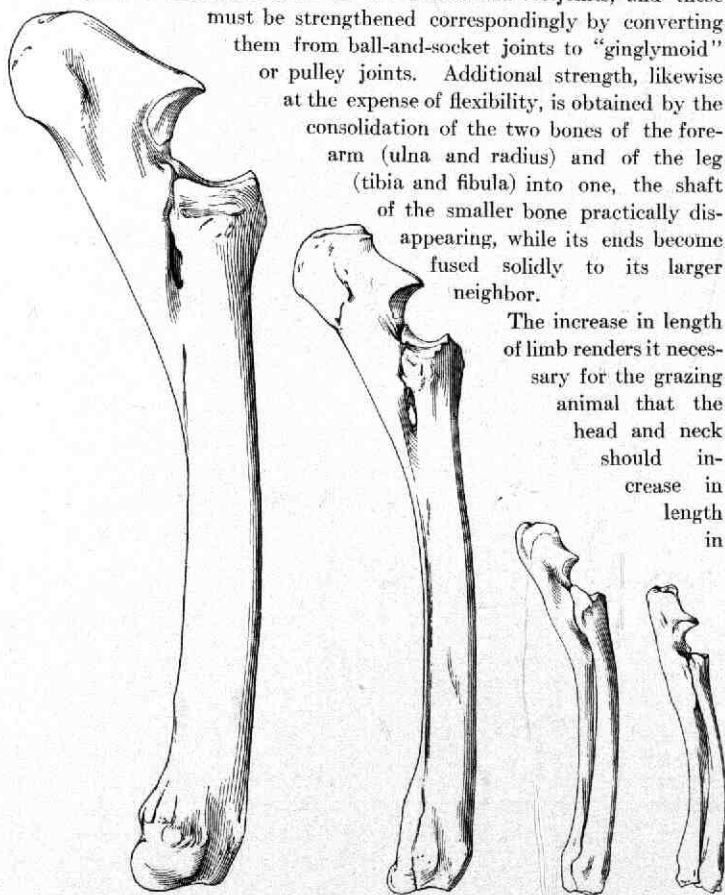


FIG. 17. EVOLUTION OF THE FORE LEG. PRINCIPAL STAGES

In the four-toed horses the radius and ulna are separate and their shafts of about equal size. In the earlier three-toed horses the ulna is separate but its shaft considerably reduced. In the later three-toed horses the ulna is partly consolidated with the radius and its shaft is reduced to a thin thread. In the one-toed horses the ulna is more completely consolidated with the radius and its shaft has entirely disappeared

order to enable the mouth to reach the ground. An example of these changes is the modern horse, in which we find the neck and head much elongated when compared with the little *Hyracotherium* and this elongation has taken place *pari passu* with the elongation of the legs. The reduction and disappearance of the side toes and the concentration of the step on the single central toe serve likewise to increase the speed over smooth ground. The soft yielding surface of the polydactyl (several-toed) foot is able to accommodate itself to a rough irregular surface, but on smooth ground the yielding step entails a certain loss of speed. A somewhat similar case is seen in the pneumatic tire of a bicycle;

a "soft" tire accommodates itself to a rough road and makes easier riding, but a "hard" tire is faster, especially on a smooth road. Similarly, the hard, firm step from the single toe allows of more speed over a smooth surface, al-

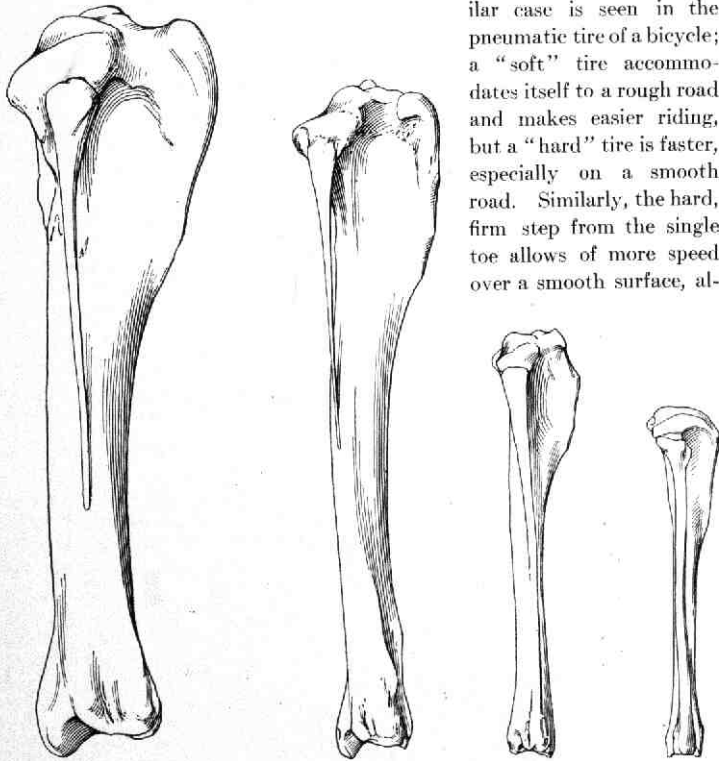


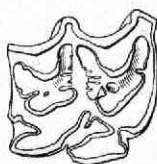
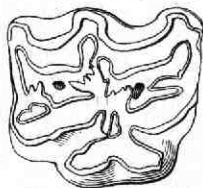
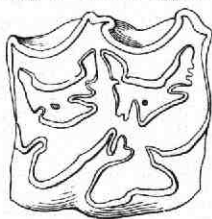
FIG. 18. EVOLUTION OF THE HIND LEG. PRINCIPAL STAGES

In the four-toed horses the fibula is complete and separate from the tibia. In the earlier three-toed horse it is very slender, and fused with the tibia from about the middle of the shaft down. In the later three-toed horses the shaft of the fibula is incomplete and both ends are fused with the tibia. In the one-toed horses the lower end is more thoroughly united so as to be indistinguishable from the tibia.



Fig. 19. Evolution of the Teeth. Earlier Stages. Second Upper Molar (Read up). (1) *Eohippus*, Lower Eocene; (2) *Orohippus*, Middle Eocene; (3) *Epihippus*, Upper Eocene; (4) *Mesohippus montanensis*, Lower Oligocene; (5) *Mesohippus bairdi*, Middle Oligocene; (6) *Miohippus*, Upper Oligocene; (7) *Parahippus*, Lower Miocene

Fig. 20. Evolution of the Teeth. Later Stages. Second Upper Molar (Read up).

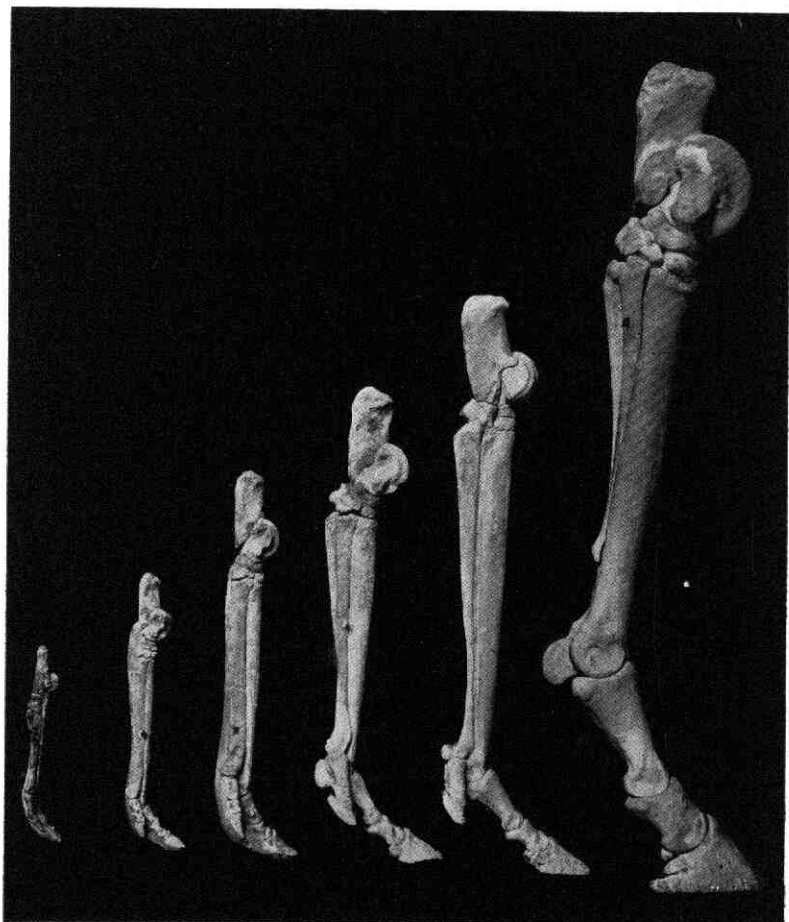


(8) *Merychippus*, Middle Miocene; (9) *Hipparion*, Upper Miocene; (10) *Equus stenorhis*, Pliocene; (11) *Equus complicatus*, Pleistocene; (12) *Equus caballus*, the modern horse

though it compels the animal to pick its way slowly and with care on rough, irregular ground.

The change in the character of the teeth from brachydont or short-crowned to hypsodont or long-crowned, enables the animal to subsist on the hard, comparatively innutritious grasses of the dry plains, which require much more thorough mastication before they can be of any use as food than do the softer green foods of the swamps and forests.

All these changes in the evolution of the horse are adaptations to a life in a region of level, smooth and open grassy plains such as are now its natural habitat. At first the race was better fitted for a forest life, but it has become more and more completely adapted to live and compete with its enemies or rivals under the conditions which prevail in the high dry plains of the interior of the great continents. The great increase in size, which has occurred in almost all races of animals whose evolution we can trace, is dependent on abundance of food. A large animal, as may be shown on ordinary principles of mechanics, requires more food in proportion to its size than does a small one, in order to keep up a proper amount of activity. On the other hand a large animal is better able than a small one to defend itself against its enemies and rivals. Consequently as long as food is abundant, the larger animals have the advantage over their smaller brethren, and by the laws of natural selection the race tends to become continually larger until a limit is reached, when sufficient food becomes difficult to obtain, the animal being compelled to devote nearly all its time to getting enough to eat.



After Osborn

FIG. 21. EVOLUTION OF THE HIND FOOT OF THE HORSE

Side views of six stages, *Eohippus*, *Mesohippus*, *Miohippus*, *Merychippus*, *Hipparion*, *Equus*

CAUSE OF THE EVOLUTION

THE evolution of the horse, adapting it to live on the dry plains, probably went hand in hand with the evolution of the plains themselves. At the commencement of the Age of Mammals the western part of the North American continent was by no means as high above sea level as it now is. Great parts of it had but recently emerged, and the Gulf of Mexico still stretched far up the valley of the Mississippi. The climate at that time was probably very moist, warm and tropical, as is shown by the tropical forest trees, found fossil even as far as Greenland. Such a climate, with the low elevation of the land, would favor the growth of dense forests all over the country, and to such conditions of life the animals of the beginning of the mammalian period must have been adapted. During the Tertiary the continent was steadily rising above the ocean level, and at the same time other influences were at work to make the climate continually colder and drier. The coming on of a cold, dry climate restricted and thinned the forests and caused the appearance and extension of open, grassy plains. The ancient forest inhabitants were forced either to retreat and disappear with the forests, or to adapt themselves to the new conditions of life. The ancestors of the horse, following the latter course, changed with the changing conditions, and the race became finally as we see it to-day, one of the most highly specialized of animals in its adaptation to its peculiar environment. At the end of the Age of Mammals the continents stood at a higher elevation than at present, and there was a broad land connection between Asia and North America, as well as those now existing. At this time the horse became cosmopolitan, and inhabited the plains of all the great continents, excepting Australia.

It is a question whether the direct ancestry of the modern horse is to be searched for in western America or in the little known interior plains of eastern Asia. It is also unknown why the various species which inhabited North and South America and Europe during the early part of the Age of Man should have become extinct, while those of Asia (horse and wild ass) and of Africa (wild ass and zebra) still survive. Man, since his appearance, has played an important part in the extermination of the larger animals; but there is nothing to show how far he is responsible for the disappearance of the native American species of horse.

PARALLEL EVOLUTION IN OTHER RACES

IT is interesting to observe that while the evolution of the horse was progressing during the Tertiary period in North America another group of hoofed animals, the Litopterna, now extinct, in South America evolved a race adapted to the broad plains of Argentina and Patagonia and singularly like the horse in many ways. These animals likewise lost the lateral toes one after another, and concentrated the step on the central toe; they also changed the form of the joint-surfaces from ball-and-socket to

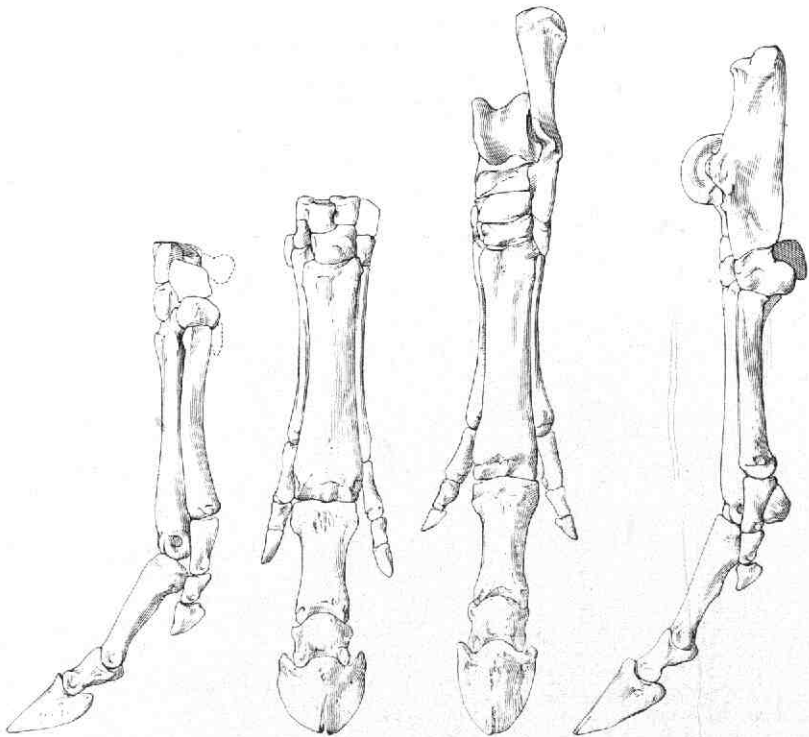


FIG. 22. THREE-TOED PSEUDO-HORSE

Fore and hind feet, one-half natural size. *Diadiaphorus* of the Miocene of South America, although so closely like the three-toed horses in the feet, has a wholly different skull and teeth, and belongs to a different order, the Litopterna, peculiar to South America and now extinct. From specimens in the American Museum

pulley-wheel joints; they also lengthened the limbs and the neck; and they also lengthened the teeth, and complicated their pattern. Unlike the true horse, they did not form cement on the tooth, so that it was by no means so efficient a grinder. This group of animals native to South America became totally extinct, and were succeeded by the horses, immigrants from North America, which in their turn became extinct before the appearance of civilized man.

Many of the contemporaries of the horse in the northern hemisphere were likewise lengthening the limbs, lightening and strengthening the feet, elongating the tooth-crowns to adapt themselves to the changing conditions around them, but none paralleled the horse evolution quite so closely as did the pseudo-horses of South America. But the camels in America, the deer, antelope, sheep and cattle in the Old World, progressed on much the same lines of evolution, although their adaptation was not to just the same conditions of life.

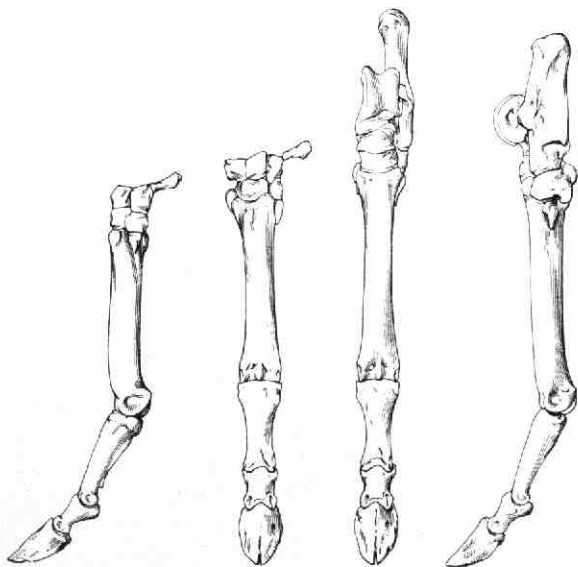
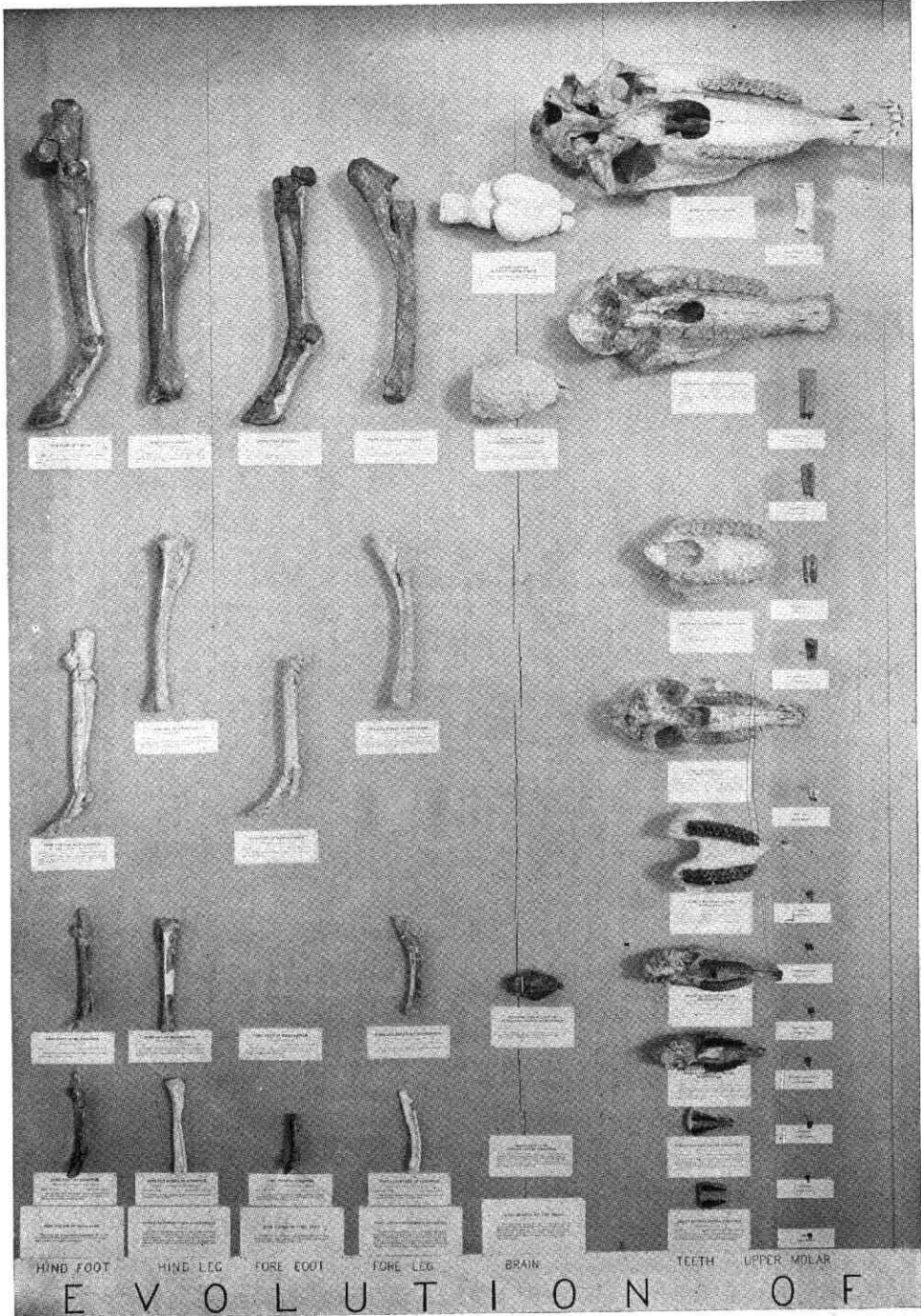


FIG. 23 ONE-TOED PSEUDO-HORSE

[Fore and hind feet, one-half natural size. The *Thoatherium* has gone even further than the modern horse in reducing the side toes to tiny rudiments instead of splints. The skull and teeth show the animal to be closely related to *Diadiaphorus* (Fig. 22) and widely different from true horses. *Thoatherium* was a little larger than a fox terrier and lived in South America during the Miocene Epoch. From specimens in the Princeton Museum and the American Museum of Natural History



HIND FOOT

HIND LEG

FORE FOOT

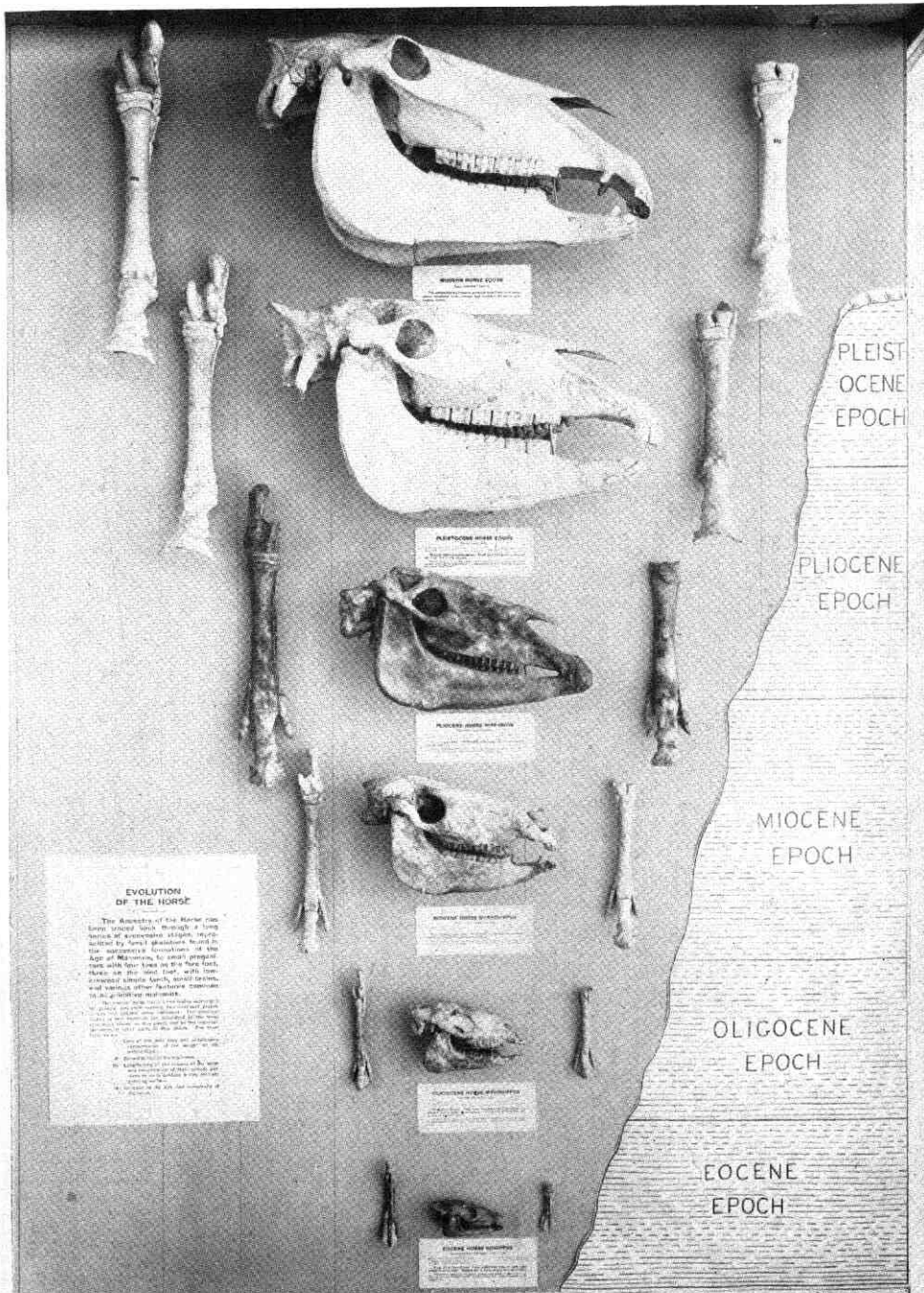
FORE LEG

BRAIN

TEETH

UPPER MOLAR

E V O L U T I O N O F



PLEISTOCENE EPOCH

PLIOCENE EPOCH

MIOCENE EPOCH

OLIGOCENE EPOCH

EOCENE EPOCH

GEOLOGIC SUCCESSION

MODERN HORSE SKULL

PLEISTOCENE HORSE SKULL

PLIOCENE HORSE SKULL

MIOCENE HORSE SKULL

OLIGOCENE HORSE SKULL

EOCENE HORSE SKULL

EVOLUTION OF THE HORSE

The ancestry of the horse can be traced back through a long series of successive stages, beginning with small quadrupeds living in the mountainous regions of the Age of Mesozoic, to such groups as the three-toed horse, which had three toes on the fore foot, and the four-toed horse, which had four toes on the hind foot, and various other features characteristic of its primitive ancestry.

The horse, like the other mammals of the class, has a long period of gestation, and its young are born in a helpless condition, and are unable to walk at birth. The young of the horse are born with a long tail, and are able to stand up at birth, and are able to walk at birth.

The horse is a member of the class of mammals, and is a member of the order of ungulates, and is a member of the family of equidae, and is a member of the genus of equus, and is a member of the species of equus caballus.

HIND FOOT

SKULL

FORE FOOT

T H E H O R S E

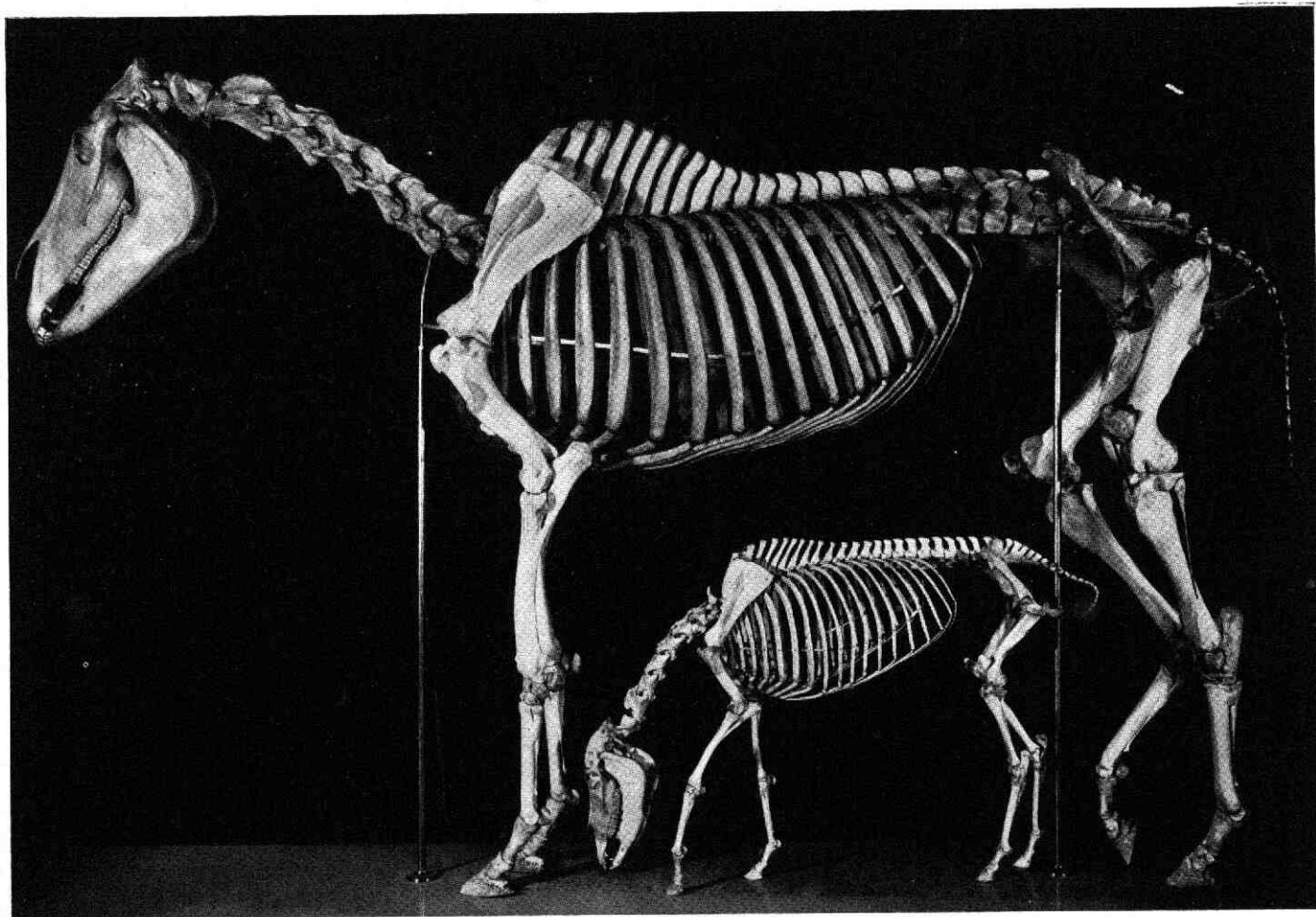


FIG. 25. GIANT DRAFT HORSE AND DIMINUTIVE BUT FULLY ADULT SHETLAND PONY

Part II. THE HORSE UNDER DOMESTICATION

ITS ORIGIN AND THE STRUCTURE AND GROWTH OF THE TEETH

By S. H. Chubb

WHEN animals are living under perfectly natural conditions, their physical structure is slowly modified by climate, topography of habitats and food supply as well as by many other forces. In the struggle for self-preservation among the competitors by which they are surrounded, they develop weapons of defence, or acquire speed mechanism or other means of escape. Thus what we may call natural, as opposed to artificial evolution, is controlled by a great variety of forces, while in a condition of domestication we have development directed in certain lines by man's intelligence.

ORIGIN OF THE DOMESTIC HORSE

IN the light of researches made by Professors Ridgeway, Osborn and Ewart, there seems to be little doubt that the domestic horse has been derived from several wild types which have since become extinct as wild species. Of two at least we may be reasonably sure: one of Europe or northwestern Asia, which has been called the Norseman's horse; the other from northern Africa, which Professor Ridgeway has called *Equus libycus*.

There is abundant evidence to prove that in the late Quaternary, during and after the Glacial Period, but nevertheless many thousands of years ago, prehistoric man chased and killed wild horses, using their flesh for food and possibly their skins for raiment. This period was followed by a second, during which wild horses were captured, broken to rude harness and driven. The rearing action of the horse skeleton in the group on exhibition in the Museum (Frontispiece) is designed to express unwilling subjection, and the position of the man, as if holding a bridle, intellectual control. The period of domestication passed insensibly into a third, that of artificial development, during which the horse was modified, and is still being modified in various directions.

Under man's protection and management, changes are brought about in domestic animals with considerable control and much more rapidly than under perfectly natural conditions. Through training and careful selection in breeding, speed has been greatly increased in the race horse, weight and strength have been developed in the draft horse, while the Shetland pony has been reduced to a most diminutive size.

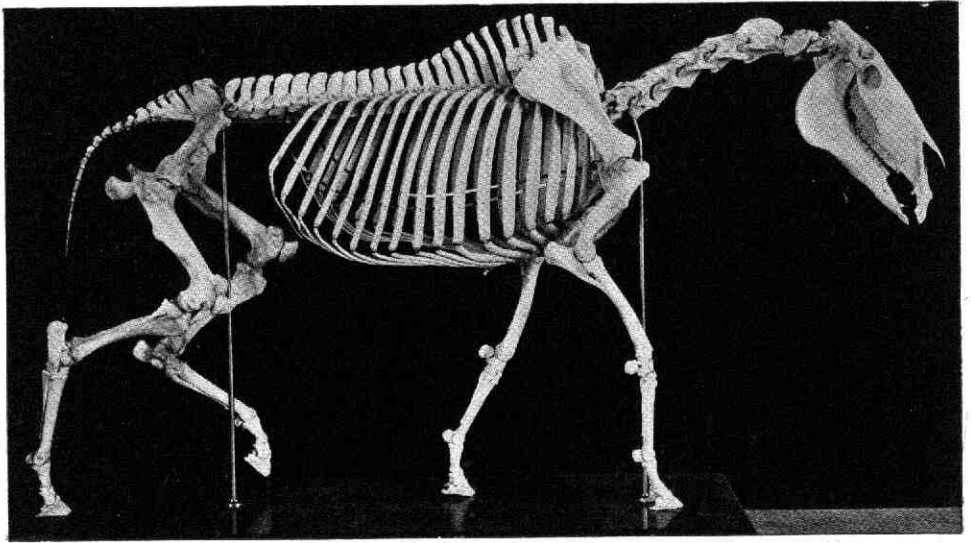


Fig. 26. The draft horse pulling a heavy load. Gift of the late William C. Whitney. The subject from which the skeleton was prepared was presented by Mr. George Ehret

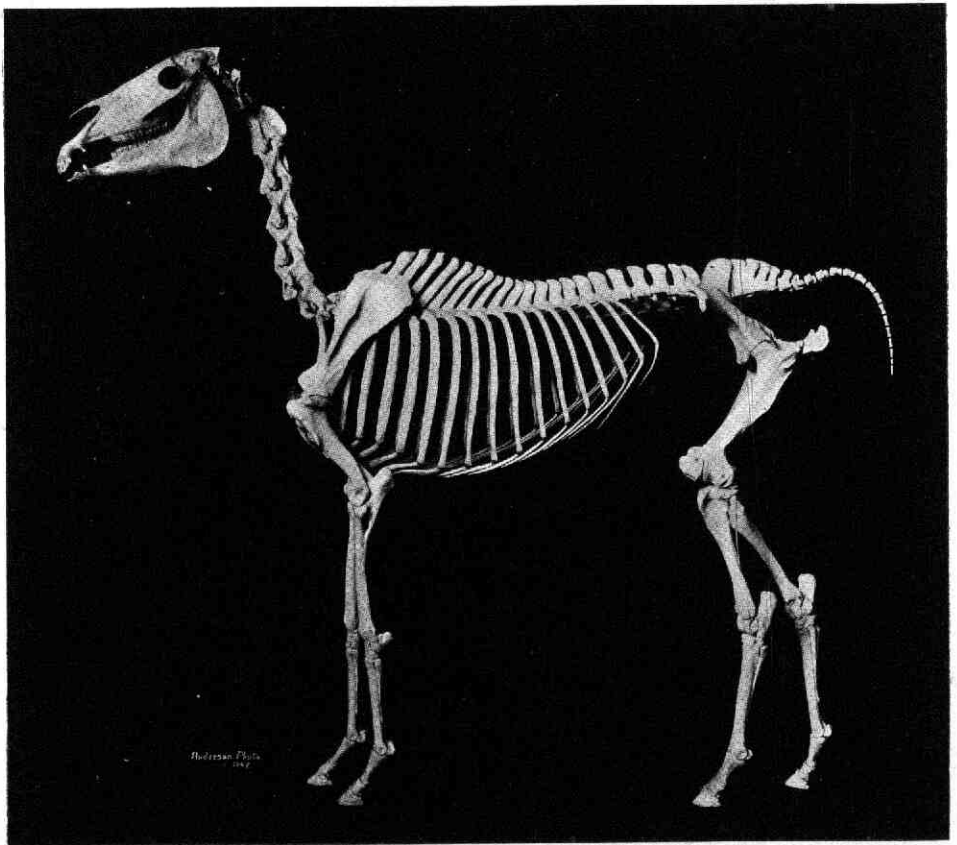


Fig. 27. Arabian stallion "Nimr." Mounted in the position of watching a herd. Subject presented by Mr. Randolph Huntington

The intimate relations which have thus existed between the horse and man have influenced both, and it is generally acknowledged by students of mankind that the subjugation of the horse and his adoption, both as a means of transportation and as an aid in agriculture, have been factors of the greatest importance in the later development of the human race.

COMPARISON OF THE SKELETON OF HORSE AND MAN

WHILE considering these two skeletons (Frontispiece), it will be worth while to look for a moment into their structure. They are so placed as to facilitate comparison. The one representing a typical or average type of horse, the other a man of about six feet in height and proportionately heavy. The limbs of the horse, moving only forward and backward, have much less freedom of motion than have those of man. Note the ball-and-socket joint of man at the shoulder and hip, the rotary motion of the forearm and the flexibility at the wrist and ankle, and compare with the restricted movement at the shoulder of the horse, the hingelike joint at the elbow, and the limited movement at the wrist (knee) and ankle (hock). The most pronounced differences however, are found in the head and feet. Compare the skull of man, which has an enormously developed brain and reduced facial portion, with that of the horse which has a comparatively small brain, the face, mouth, and teeth monopolizing almost the whole skull. The feet, instead of having five toes as in man, are reduced to a single digit¹ and they are very much elongated as a striking speed specialization. And yet a careful study will reveal a most striking similarity between the two subjects in general structure, the differences being simply modifications of a common plan.

THE DRAFT HORSE

THE Norseman's horse of Europe seems to have been an animal with large head, convex forehead and rough coat, of rather clumsy appearance, and of little speed. It may have been a near relative of the Przewalsky horse which still lives as a wild species in northwestern Mongolia, the only true wild horse known at the present time. Among other evidences of this prehistoric type, are the many sketches found in the south of France and elsewhere, made by the very primitive cave-dwellers, which seem clearly to depict this type of horse, and it is no doubt this strain which predominates in our heavy draft horse of to-day although of course this horse has been greatly increased in size and strength by long and careful breeding.

¹ See page 21.

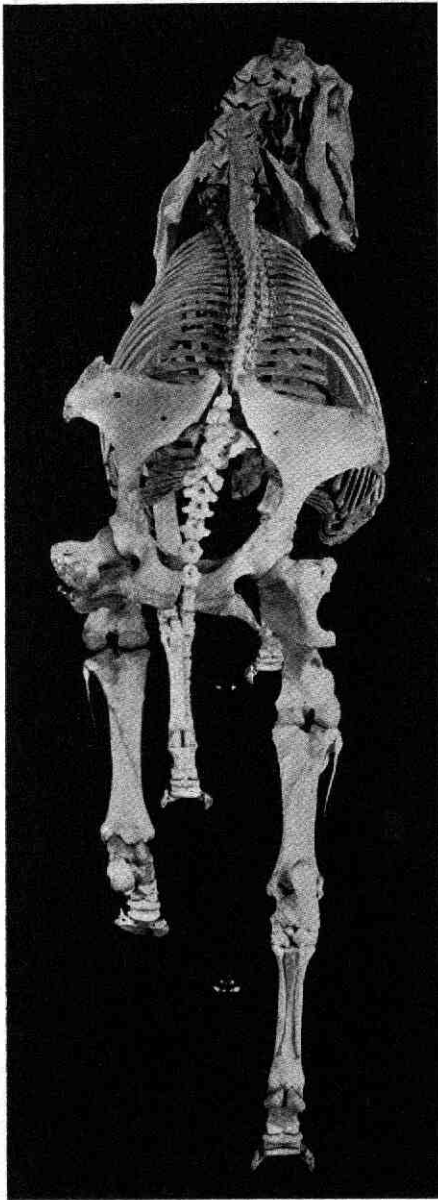


Fig. 28. The draft horse. Rear view showing action of pelvis and backbone

An attempt has been made to express the strength acquired in this breed in the mounted skeleton of the draft horse (Fig. 26). This skeleton has been so mounted as to show the action of the bones when the animal is drawing a heavy load. We must imagine that the shoulders rest against a collar upon which the horse is exerting its energy. Note that the head and body are lowered, the hind legs are doing the greater amount of work, the fore legs acting as supports, though a portion of the weight of the body has been thrown against the collar. From the rear view (Fig. 28) note that the right hip joint is much nearer the median line than is the left. The joint is also lower, and indeed, the entire right side of the pelvis has been lowered and thrown well to the left, so that when at the moment of greatest strain the right leg is extended, the pressure upon the anterior part of the body, and thence upon the collar, is applied in a line which coincides with the main axis of the body. At the next moment the left leg is supposed to be exerted, the right is released, the pelvis then swings to the right, the curve in the backbone becomes reversed and the pressure is again applied (this time from the left) along the main axis of the body as before; and so on from step to step.

DEVELOPMENT OF GREAT SIZE IN THE DRAFT HORSE

THE skeleton of a very large draft horse is exhibited to show the extreme development of size in this breed. It has been photographed with that of a Shetland pony to show two extremes in domestic horses (Fig. 25). The following is a table of measurements of the two specimens.

	GIANT DRAFT HORSE	SHETLAND PONY
Height at shoulders.....	6 ft. 1 in. (18½ hands)	2 ft. 9⅜ in. (8⅜ hands)
Weight in life.....	2370 lbs.	170 lbs.
Bulk of humerus.....	118⅜ cu. in.	9½ cu. in.
Bulk of femur.....	188 cu. in.	13½ cu. in.

The pose chosen for the mounting of this specimen is one of inaction, designed to express quiet restfulness, in contrast to the running action of the race horse, to be mentioned later. It shows also a habit peculiar to horses, that of alternately resting the hind legs. Almost the entire weight of the hind quarters is supported on the extended left leg, while the right hind leg rests in a more flexed position and hangs perfectly lax. The pelvis also seems to hang, as it were, from the left hip joint, tilting very much to the right and slightly twisting the vertebral column.

A peculiar function of the patella (kneecap) in the horse is shown in the left knee joint or stifle. While the limb is extended and supports the animal's weight, the patella rests on a projecting articulation of the femur, so that the knee is locked in an extended position by a very strong ligament which holds the patella at a fixed distance from the tibia below, thus sustaining the weight required of it with comparatively little muscular exertion.

An abnormal peculiarity of this specimen is a pair of supernumerary molar teeth, which appear at the posterior end of the upper set. Having no opposing teeth in the lower jaw upon which to wear, they have protruded down into the gum and must have caused the animal considerable discomfort.

THE SHETLAND PONY

IT is highly probably that the Shetland pony is derived from practically the same wild stock as the very much larger draft horse, but has been reduced in size by adverse conditions to which it was subjected in the cold and barren Shetland Islands with their limited area, and also by having been systematically bred for the smallest possible size.

Figure 25 shows the skeleton of an exceptionally small pony which was secured through the Whitney fund. This pony was bred in Scotland and obtained through the kindness of Professor J. C. Ewart of the University of Edinburgh. The skeleton represents the grazing action. It will be seen that the downward reach of the head and the slow, lax step modify the position of almost every bone in the body.

The vertebral column is considerably arched in the dorsal region, thus assisting in the downward curve of the neck and at the same time tilting the angle of the pelvis a few degrees toward the perpendicular, increasing the length of the hind limbs and tilting the body toward the head. The head being turned well to the right, there is a very slight curve toward the left in the anterior portion of the dorsal vertebræ, and a slight curve to the right in the lumbar vertebræ owing to the backward position of the right hind foot.

The weight of the body falls on the right front and the left hind foot, bringing them both very near the median line, and also modifying the position of the scapula and elevating the left side of the pelvis. A little below the knee a very small hairlike bone may be seen, which represents the shaft of the almost extinct fibula, a bone which was well developed in the ancestors of the horse.

THE ARABIAN HORSE

OF all the many types of horses probably the one most universally admired and loved is the Arabian, with its marvelous grace and beauty, great intelligence, perfection of anatomical mechanism, fleetness and endurance. The question may well be asked, whence comes this superiority?

The great fondness and care with which the Arabs have bred their horses for many hundreds of years have undoubtedly done much for the elevation of the stock; but more than this it is shown almost conclusively that the Arab was blessed with a wonderfully fine natural species on which to exercise his care. On this point Professor William Ridgeway of Cambridge University, has given us an immense mass of most convincing evidence.¹

There are many reasons, traditional and historical, as well as zoölogical, for believing that the Arabian horse, or as Professor Ridgeway has called it, the Libyan horse, is in origin entirely separate from the very much inferior northern or Norseman's horse, and that its native home was not in Arabia but northern Africa, where it was domesticated by the ancient Libyans, in all probability as early as 2000 B. C.

The Egyptians also knew full well the value of domestic horses. "Egypt was, in fact, famous for its breed of horses which were not less excellent than numerous, and we find that they were even exported to other countries, Judea, Syria, and to the Kings of the Hittites."² It is very clear too, from Egyptian art, that these horses were also of the North African, or as we would say to-day, Arabian type. It has been the constant infusion of this Libyan blood which has tended to improve our commoner horses for these many centuries.

¹ RIDGEWAY, WILLIAM. *Origin and Influence of the Thoroughbred Horse*. Cambridge: Univ. Press, 1905.

² WILKINSON, I. G. *Ancient Egyptians*.

The skeleton of "Nimr" (See Fig. 27, p. 38), a pure-blooded Arabian stallion, has been mounted to show some of the conspicuous characteristics of this species, which are as follows:

1. Head and tail carried high when the animal is animated;
2. Skull short, but broad between the eye sockets;
3. Eye sockets high and prominent, giving the eyes a wide range of vision;
4. Facial profile, or forehead, concave;
5. Muzzle slender, but jaw deep and wide-set above the throat;
6. Round thorax, well "ribbed up" and short back with only five ribs, or lumbar vertebræ;
7. Horizontally placed pelvis (a speed character) and very high tail region, few tail vertebræ;
8. A complete shaft of the ulna, or small bone of the forearm;
9. Long and slender cannon bones and long sloping pasterns.¹

"Nimr" was sired by the desert-bred Arabian "Kismet," famous for an unbroken series of victories as a race horse in India. After his death at Oyster Bay, Long Island, in 1904, the subject was presented to the Museum by the owner, Mr. Randolph Huntington.

THE RACE HORSE

AS for the earliest domestication of the horse in Britain, where the race horse or thoroughbred has since been developed, no definite statement can be made. We read that horsemen in large numbers opposed the landing of the Romans, and also that in 631 A. D. the English first began to saddle their horses. Again we find mention of "running" horses in the ninth century. But it is not until about 1689, when the famous "Byerley Turk" was brought to England, that we learn anything definite concerning the origin of the present English stock, though horses of undoubted North African blood had been imported from Turkey a century or more earlier.

The Darley Arabian, bred in the desert of Palmyra, was imported into England by Mr. Darley in 1705. About twenty years later the Godolphin Arabian,² arrived on the scene, continuing to improve the English stock with infusion of North African or Libyan blood (page 42) to which the quality of the race horse is chiefly due.

Touchstone states, "The thoroughbred, as soon as he ceases to be subjected to the special régime of training reverts to the Arab type with such extraordinary rapidity that we cannot be blind to the fact that he descends, for at least seven parts out of eight, from the pure Arab,³ which

¹ OSBORN, H. F. Points of the Skeleton of the Arab Horse. Bull. Amer. Mus. Nat. Hist., vol. xxiii, art. 13, pp. 259-263, 1907.

² Richard Berenger, however, denies that this horse was an Arab, though his view is not generally accepted. *History and Art of Horsemanship*, 1771.

³ TOUCHSTONE, S. F. Race Horses and Thoroughbred Stallions.

we would consider of Libyan origin, and indeed many admirers of the Arab would gladly eliminate the remaining eighth of non-Arabian blood.

However the race horse of to-day is a very highly specialized animal, certainly vastly different in appearance from the Arab and yet still more widely separated from the draft-horse type.

In July, 1906, we were particularly fortunate in the gift from the late Mr. James R. Keene, of the remains of one of America's most famous race horses, together with sufficient funds for the preparation of the skeleton.

This remarkable horse, "Sysonby" was foaled February 7, 1902, at Mr. Keene's Castleton stud in Kentucky, a few months after the importation from England of his dam "Optime," his sire being the English bred "Melton." His record is one of the most brilliant in the history of American horse-racing. He won a remarkable series of victories between his first race at Brighton Beach, July 14, 1904, as a two-year-old, and his untimely death at four years (July 17, 1906).

The skeleton (Fig. 29) has been mounted to show a phase in the stride of the running horse, and is based on studies made from direct observation and instantaneous photographs. The position is that of the moment after the right fore foot has left the ground, and the right "knee" or carpus, is beginning to bend; the succeeding footfalls in order are the left hind, the right hind, the left fore and the right fore, the full length of one complete stride being about twenty-six feet.

At this instant the hind quarters are lifted perceptibly higher than the shoulders and from a rear view it will be seen that while the hind feet are thrust forward at this greater height from the ground, they are widely separated so as to avoid striking the fore legs. A moment later the shoulders will be lifted by the push of the fore feet higher than the hind quarters, then the hind feet will move toward the median line and strike the ground, and the fore feet will have moved forward out of the way of the hind.

The backbone is slightly arched to help draw together the fore and hind limbs and feet, and thus lengthen the stride and bring the back muscles into play. When viewed from above, the backbone is also observed to be curved a little to the right, owing to the forward position of the left side of the pelvis and of the left hind limb; this also lengthens and gives power to the stride as the backbone is straightened.

THE TEETH OF THE HORSE

[COLLECTION IN WALL CASE]

THE dental apparatus of the horse is one of the most interesting and highly specialized organs we find in nature. During the course of evolution through many ages, the teeth have gradually grown more

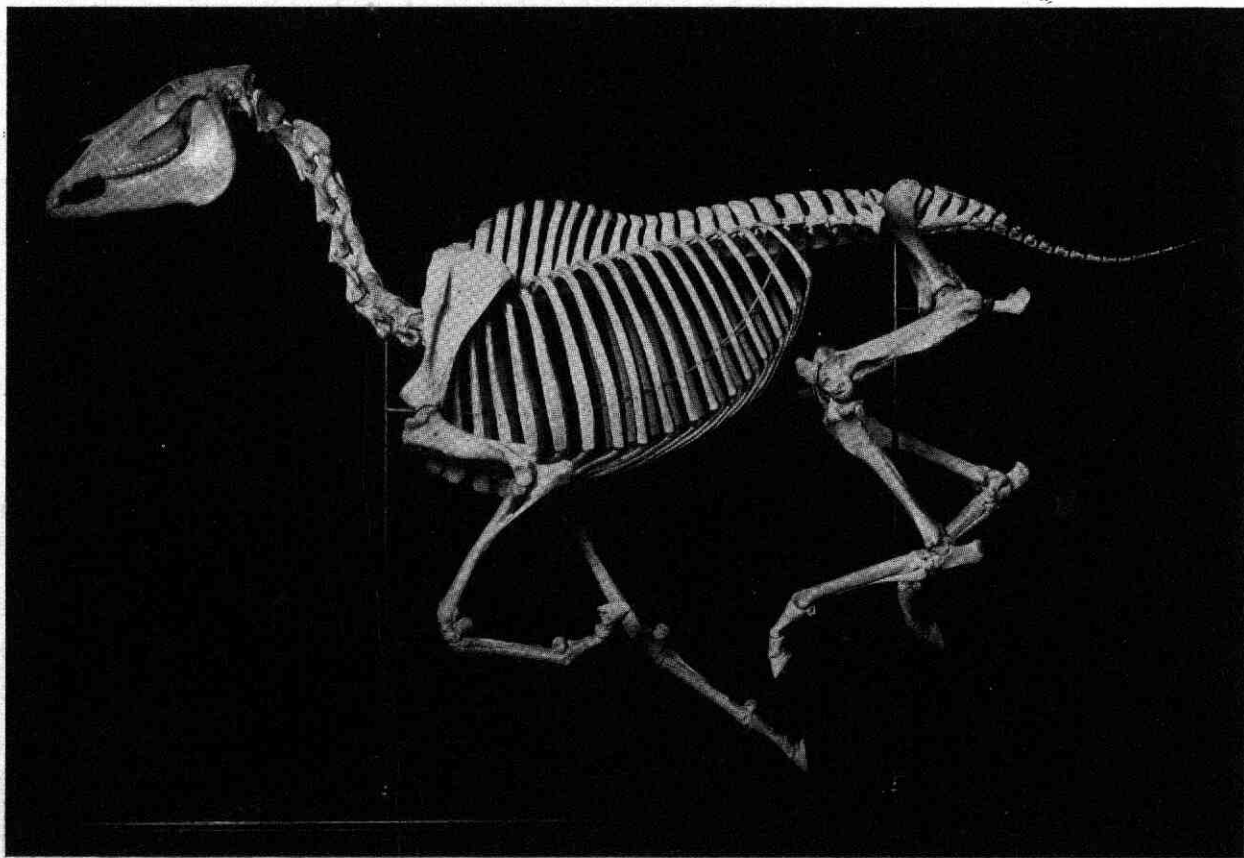


FIG. 29. THE FAMOUS AMERICAN RACE HORSE "SYSONBY." SHOWING ACTION IN THE HARD RUN

and more complex, becoming constantly more perfectly adapted to the cropping and grinding of coarse hard grasses. They are in fact of such great size and importance that the whole skull seems constructed chiefly for their lodgment and operation, the custody of the brain, eyes and ears being, as it were, of secondary consideration; hence the skull must of necessity be very bulky, and in order that the weight may not be unnecessarily great, large air spaces (sinuses) are provided, aggregating between two and three times the amount of space occupied by the brain (specimens 51 and 5, on exhibition in wall case). Indeed the skull of the horse is a beautiful design in arches and braces, resulting in a structure of the greatest possible strength and utility with a minimum of weight and material.

The ethmoids, the bony framework of the organ of smell, are also highly developed, with a complicated system of scrolls presenting an immense amount of surface to the air that is drawn into the nostrils (specimens 5, 10 and 51).

STRUCTURE OF THE TEETH

A VERY simple form of tooth is that commonly found among the reptiles, a mere peglike structure composed of dentine with a very much harder covering of enamel on the crown, and a nerve canal in the center. We have selected three incisor teeth (Fig. 30) to show examples of different degrees of specialization. *A*, the tooth of a young cow, is of comparatively simple form, being somewhat flattened and having a clearly defined line or neck between the crown which is completely covered with enamel and the dentine root which is without enamel. The neck, or base of the crown, as in most simple teeth, coincides with the line of the gum. In the horse the composition of the teeth is the same except that we have a third element known as cement, which begins to be deposited on the surface some time before the eruption of the young tooth, covering the enamel almost completely. In design it is more complicated. Instead of the plain upper border (Fig. 30*A*) there is a very deep indentation or folding in of the enamel, somewhat like the inverted finger of a glove, forming an enamel lined cup or cul-de-sac, running far down into the tooth (Figs. 30*C* and *D*), becoming more or less completely filled, particularly toward the bottom, with a deposit of cement. It is usually observed that highly specialized organs are more primitive in the young individual than in the adult. This is very noticeable in one specimen (Fig. 30*B*), which represents the deciduous or milk incisor of a colt about four days old. This tooth has just cut through the gum, and does not as yet show any wear from use. The enamel cup is very shallow as compared with that of the permanent tooth (*C* and *D*). It also shows a clearly defined line at the base of the crown, which when the tooth is fully grown, will coincide with the line of the gum as in the teeth

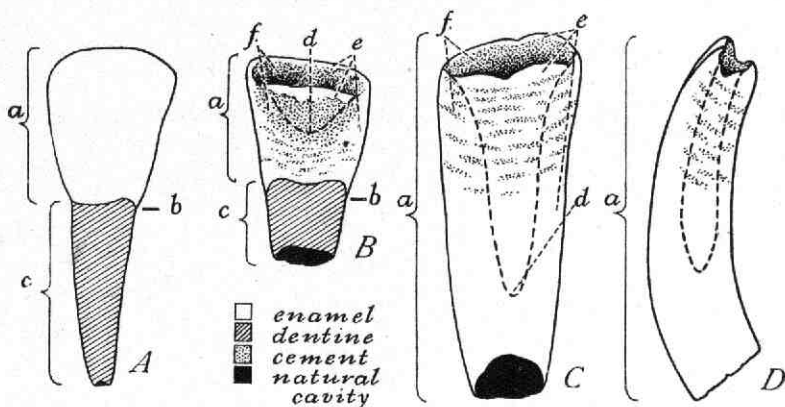


Fig. 30. Inisor teeth showing different degrees of specialization. Natural size.

- A. Permanent tooth of young cow. *a*, crown; *b*, base of crown; *c*, root
 B. Deciduous tooth of colt 4 days old. *a*, crown; *b*, base of crown; *c*, incomplete root; *d*, bottom of shallow cul-de-sac; *e*, enamel; *f*, cement deposited on enamel
 C. Permanent tooth of colt 2 years old. *a*, crown; *d*, bottom of very deep cul-de-sac; *e*, enamel; *f*, cement
 D. Side view of C. (A, B, and C inner views)

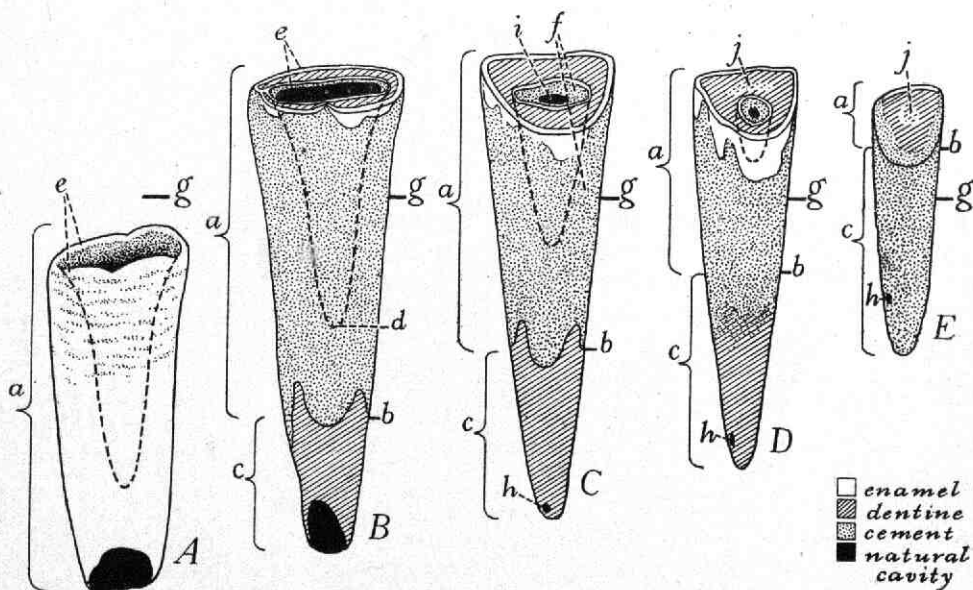


Fig. 31. Incisor teeth of the permanent set (*i.*¹) showing wear and movement.

Inner view. Natural size.

- A. Tooth of a colt 2 years old before it has erupted. *e*, folded edge of enamel, unworn
 B. Tooth of horse 4 years old. *a*, crown; *b*, base of crown; *c*, incomplected root; *d*, bottom of cul-de-sac; *e*, worn edges of enamel; *g*, gum line
 C. Tooth of horse 12 years old. *c*, root fully grown; *f*, internal and external cement; *h*, nerve foramen; *i*, natural cavity in cement
 D. Tooth of horse 17 years old. *j*, "dental star"
 E. Tooth of horse 33 years old

of the cow and other simple teeth. The root of *B* is not as yet fully grown, but presents a large pulp cavity which will be reduced to a narrow nerve canal as the root grows longer, and tapers to a point, leaving only a very small foramen for the passage of the nerve. Figure 30C shows the permanent incisor of a colt two years old, which erupts and replaces its deciduous predecessor at about three and a half years. The cul-de-sac, as mentioned above, is very deep, running down almost the full length of the crown, the root not yet having begun to develop. There is already considerable cement in the cul-de-sac, and a very slight deposit beginning on the external surface about the upper end of the crown. A series of lower incisor sections and also vertical sections of incisor teeth, exhibited in the wall case, will explain the structure more clearly.

WEAR AND COMPENSATING MOVEMENT OF THE INCISORS

WHAT is frequently spoken of as "growth" in the horse's teeth is not growth, but rather movement. It is true that growth does continue in some few of the teeth until the horse is ten or twelve years old, but only in the completion and closing of the roots (see above), the crowns being all fully developed, including grinders as well as incisors, at about five and one-half years. From the time the tooth begins its service it continues to move out of the alveolar cavity, which fills with new bone, this movement counteracting the rather rapid wear of the cutting or grinding surface, so that in extreme old age some of the teeth may be worn down to the very points of the roots. One of their most remarkable specializations is the extremely long crown which instead of being entirely above the gum line, as with the more simple teeth, human for instance, extends far down into the alveolar cavity, as much as $3\frac{5}{8}$ inches in the large premolars, as a reservoir of grinding material. Figure 31 shows a series of upper incisors to explain the manner in which the tooth is worn as it proceeds from the alveolar cavity, the wearing surface altering in contour as it progresses along the crown of the tooth which constantly changes in shape toward the root.

A is the permanent tooth of a colt two years old, before it has replaced its deciduous predecessor or has received any wear, so that the external enamel is continuous with that of the cul-de-sac or internal enamel. The cement now lines the cul-de-sac and is beginning to be deposited on the external enamel. As yet the tooth has no root, but presents a wide-open pulp cavity at the base.

B is the tooth of a horse about four years old. It has recently replaced its deciduous predecessor, being in use only about six months. The folded edge of enamel is worn through, exposing the dentine beneath, and sepa-

rating the enamel of the cul-de-sac from that of the exterior, with the exception of a very slight connection at the left-hand border. Internal as well as external enamel is covered with cement except on the wearing surface. The base of the crown is not clearly defined but can readily be located as it coincides with the lower border of enamel. It will be seen that this point, instead of being at the surface of the gum as in more primitive teeth, is planted about an inch and three-eighths deep, *g* indicating the gum line.

C, the tooth of a horse about twelve years old, shows a more triangular wearing surface, having been worn down a distance of perhaps three-eighths or one-half inch. The cul-de-sac is greatly reduced in surface diameter, as well as in depth. The root is fully developed and shows the nerve foramen (*h*) at the point. With the advance of age the wearing surface of the tooth, molar as well as incisor, must necessarily approach the nerve, which would subject it to exposure. This is provided for by the recession of the nerve and a new growth of dentine, reducing the nerve or pulp cavity and sometimes in extreme old age completely filling it.¹ As the tooth wears down this new dentine can be detected in the incisor by a slightly lighter shade in color, and is known among horsemen as the "dental star." It is indicated in Figure 31*D* and *E*.

In Figure 31*D*, showing the tooth of a horse about seventeen years old, the wearing surface is still more triangular. The cul-de-sac is almost worn away; the base of the crown is approaching the gum line. Not only the crown as in the younger teeth, but the root as well, is becoming thickly covered with cement, so that the base line of the crown is obliterated, but can readily be located by sectioning. On the more exposed ridges however, particularly the anterior surface, not shown in the sketch, the cement has been worn through in places by friction of the tongue and lips.

E shows the condition in extreme old age, this specimen being the tooth of a horse thirty-three years old. The cul-de-sac has long since disappeared and the only enamel remaining is a very narrow strip on the anterior border. The wearing surface has become elliptical, and the "dental star" has changed from a transverse line to a rounded spot. The deposit of cement has increased to almost an eighth of an inch in thickness, reënforcing the old declining root, as it were, to prolong its service to the very last.

The base of the crown has passed beyond the gum line, and at best the tooth could not last many years longer.

It is by the examination of these indications that horsemen ascertain the age, although it is impossible to judge accurately in the more advanced stages. Especial attention is given to the size and shape, presence or absence of the cul-de-sac, known among horsemen as the "mark." It

¹ See specimen No. 132 under "Teeth sectioned to show reduction of pulp cavity" on exhibition in wall case.

should be explained however, that the lower incisors which are more easily examined in the living horse, being somewhat smaller and having a shallower cul-de-sac than the uppers just described, will acquire a certain appearance of wear at an earlier age. For instance, if *C* and *D* were lower teeth they would have a similar appearance at the ages of eight and twelve years. Considering the incisor set as a whole, it shows other marked changes with the advance of age. To render effective service the teeth must be in close contact; therefore, as each tooth is reduced in diameter it moves slightly toward the median line, reducing the total transverse measurement of the set. The meeting angle of upper and lower teeth becomes much more acute in old age. An exhibit labeled "Series of Horse Muzzles" in the wall case shows the general appearance of the incisor teeth at various ages.

The canine tooth, which is rarely found in the female except in a very abortive form, is of comparatively simple structure and has no apparent function at the present time, but may have been of service as a weapon at a very early stage of evolution. It receives almost no wear, has little or none of the compensating movement of the incisors and is, in fact, of no very great interest.

DESIGNATION OF THE TEETH

THE deciduous or milk teeth, which are shed and replaced by permanent ones, are divided into three classes: in front, the deciduous incisors, back of these, the very small deciduous canines, and still farther back, the deciduous molars.

In the permanent set the incisors and canines have replaced the deciduous ones, and the deciduous molars have been replaced by the premolars. Still back of the premolars comes a fourth class, the permanent or true molars, which have no deciduous predecessors.

In works on comparative anatomy and zoölogy the teeth are expressed by initial letters and numbers in fractional form; the numerator denotes the number of upper teeth, and the denominator the number of lower teeth of each class, running back from the median line in front, and considering only one side of the skull. For instance the typical mammalian milk dentition is as follows, all being deciduous teeth: incisors three, canine one, molars four, which would be expressed *d.i.* $\frac{3}{3}$, *d.c.* $\frac{1}{1}$, *d.m.* $\frac{4}{4}$. The permanent dentition would be *i.* $\frac{3}{3}$, *c.* $\frac{1}{1}$, *p.m.* $\frac{4}{4}$, and *m.* $\frac{3}{3}$ — forty-four teeth in all. The human subject having only thirty-two permanent teeth, would be expressed *i.* $\frac{2}{2}$, *c.* $\frac{1}{1}$, *p.m.* $\frac{2}{2}$, and *m.* $\frac{3}{3}$.

The teeth are numbered from the median line, hence when indicating a certain tooth *i.* $\frac{3}{3}$ would be read, lower incisor three; *p.m.* $\frac{4}{4}$ upper premolar four; lower deciduous canine is expressed *d.c.* —. Figure 32 shows

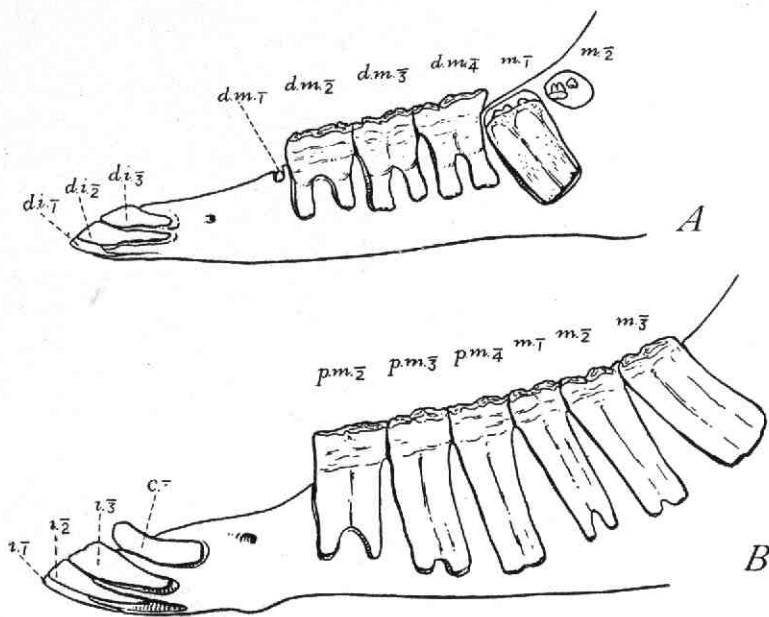


Fig. 32. Designation of teeth
 A. Lower jaw of colt 9 months and 12 days old, marked to show designation of deciduous teeth
 B. Lower jaw of horse 5 years old marked to show designation of permanent teeth

the designation of deciduous and permanent teeth. *A* is the lower jaw of a colt nine months and twelve days old, in which the deciduous dentition is all in use, and though the eruption of the molars has not yet begun, the development of one at least is well under way. In *B*, a horse about five years old, the permanent teeth are all in place. It must be borne in mind that when a subject has a reduced dentition the teeth are numbered not necessarily as they appear in the jaw, but according to what is believed to be their true relation in the typical dentition, having forty-four teeth. For instance, in the human subject where there are but two premolars known among dentists as bicuspid, the first one in the lower jaw would be expressed *p.m.* $\bar{3}$. The second would be *p.m.* $\bar{4}$, assuming that *p.m.* $\bar{1}$ and *p.m.* $\bar{2}$ are the missing teeth. The teeth of specimens on exhibition, Nos. 10 and 36, are labeled in the manner described.

THE WOLF TOOTH OF THE HORSE

IN the horse we may say that *p.m.* $\frac{1}{4}$ (Fig. 37*B*) is now in the last stage of elimination. Just in front of the upper premolars there is frequently found a very small abortive tooth commonly known as the

"wolf tooth." It does also occur in the lower jaw but is very rare. It is absolutely non-functional, and is in fact rather detrimental, as it sometimes gives rise to more or less irritation. So that in the horse the first functional premolar is *p.m.* $\frac{2}{2}$. The wolf tooth, though interesting, is rather hard to study owing to its irregularity. When speaking of the permanent teeth it is generally designated as *p.m.* $\frac{1}{1}$, which would be correct if it really belonged to the permanent set; this however, I am inclined to doubt, although it is frequently found long after the shedding period is over. Nevertheless, it seems highly probable that it is a deciduous tooth, which having no successor, is not shed. In this case it would seem that the permanent tooth had been eliminated earlier in the course of evolution than the deciduous one. But until we have more conclusive evidence on this point probably it will be as well to include the wolf tooth among the teeth with which we find it. In figure 32A there is shown the unusual occurrence of the wolf tooth in the lower jaw. In looking over the fossil ancestors it seems this tooth began to show signs of elimination in the late Oligocene Period, which is estimated to be about two million years ago. At this rate we may reasonably hope for some few social reforms before the horse is entirely rid of this rather undesirable appendix.

PREMOLARS AND MOLARS OF THE HORSE

WHEN we compare the molar tooth with its most intricate structure, with the incisor, the latter seems perfect simplicity. Without here discussing the evolutionary history of the tooth, it is extremely interesting to consider these special adaptations, which are merely gradual modifications of a simple form brought about without any radical or sudden changes, but slowly developed in an orderly and shall we say, orthodox manner.

The molar of the horse as we find it to-day, is a wonderful structure, presenting on its grinding surface a most complicated system of sharp enamel edges almost as hard as glass, supported on one side by dentine and on the other by cement. These materials being somewhat softer than enamel, wear down slightly in advance, leaving the enamel edges sufficiently exposed to give a perfect self-sharpening, grinding surface, but at the same time not projecting so far beyond the general plane as to be in danger of chipping off.

When we compare such a tooth as this with a perfectly simple one, composed of dentine and having a short, either cone-shaped or flattened crown, covered merely with a smooth shell of enamel without cement, it is difficult at first sight to see any relation or similarity between them, or to realize that the highly specialized organ is simply a development of the

primitive one. But let us by way of illustration imagine for a moment a tooth with a crown in form somewhat like a pillar or post, composed of dentine with two deep depressions in the top, the dentine being everywhere covered with enamel, and a thick deposit of cement on the surface of the enamel.

When the cement and enamel are worn through on the grinding surface we would have the exposed edge of an enamel cylinder filled with dentine, reinforced with cement on the outer surface, and two enamel rings, or rather pockets with the edges exposed, lined, or completely filled as the case might be, with cement imbedded in the dentine. This would be a construction similar to that we have already seen in the incisor, except that we have two instead of the single cul-de-sac. Now let us imagine the enamel walls of these culs-de-sac, and also the enamel cylinder, deeply crenated or folded and doubled, in some places the latter coming almost in contact with the former, thus increasing greatly the exposed enamel edges, and we will have the design of the grinding surface of an upper deciduous molar after it is somewhat worn (Fig. 33A). And here it must be borne in mind that the horse's teeth are not fully functional until the folded edges of enamel on the grinding surface are worn through to the dentine.

Figure 33B shows the deciduous upper molar (*d.m.*⁴) of a colt about three months before birth. The enamel of the culs-de-sac is continuous with that of the exterior, the folded edges on the grinding surface being unworn. It is as yet entirely without cement so that we have an unobstructed view of the enamel. When the colt is six months old, however, the culs-de-sac will be practically filled with cement and also the deep folds of the exterior (Fig. 33A), the deposit of cement beginning about a month before birth.

We have seen that the permanent incisors are much more highly specialized than are the deciduous ones (Page 46). This is quite as noticeable in the grinding teeth. Observe the wonderful development of enamel edges in

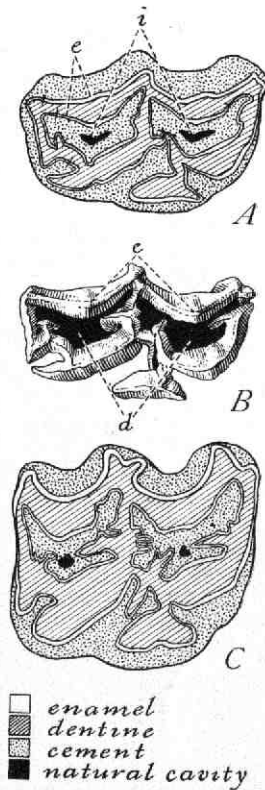
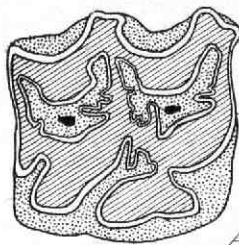
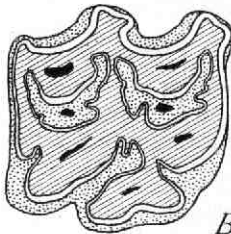


Fig. 33. Wearing surface of upper grinding teeth. Natural size

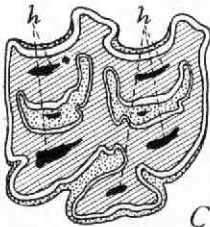
- A. Worn surface of deciduous molar (*d. m.*⁴) of colt about 6 months old. *e*, exposed enamel edges; *i*, natural cavity in cement
- B. Unworn surface of deciduous molar (*d. m.*⁴) of colt about 3 months before birth, showing only enamel. *d*, cul-de-sac to be filled later with cement; *e*, apex of folded edge of enamel
- C. Premolar (*p. m.*³) of horse 8 or 9 years old



A



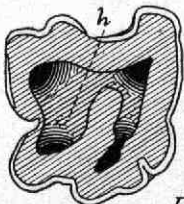
B



C



D



E

- enamel
- ▨ dentine
- ▤ cement
- natural cavity

figure 33C. This is a premolar of a horse eight or nine years old. A careful measurement of the exposed enamel in this tooth reveals the interesting fact that if these edges were straightened out in a continuous line, it would be fourteen inches in length. In a tooth of this size on the simple "cylinder" plan, it is obvious we would have only about four inches of enamel, hence we can willingly concede nature's wisdom in this comparatively "modern improvement."

This enamel pattern however, presents a more simple aspect as the tooth wears down toward the base of the crown, so that in old age when the grinding surface is near the root, there is less enamel, and the self-sharpening surface is much less perfect. The antero-posterior diameter of the crown is also reduced toward its base.

Figure 34 shows an upper right grinder (*p. m.*⁴) of a horse ten or eleven years old. The tooth is cut in five sections, and reveals on each cut surface, the pattern of enamel which will be presented on the naturally worn grinding surface at various ages.

Section *A* is a diagram of the natural grinding surface as it appeared in life, and shows a very complicated pattern of enamel, and large culs-de-sac almost completely filled with cement.

Section *C* which is cut one and one-fourth inches farther along the crown, shows great simplification of enamel pattern, and the culs-de-sac are much smaller. The five branches of the pulp cavity (*h*) are open, but would have been filled with new dentine before the natural grinding surface reached this point (Page 49) which takes place when the horse is approximately twenty-five years old.

Section *E*. The lower border of enamel which marks the base of the crown where this section

Fig. 34. Upper grinder (*p. m.*⁴) of horse 10 or 11 years old cut in 5 sections; showing pattern of enamel at various ages

C, h. Branches of the pulp cavity
E, h. Pulp cavity

is cut, is somewhat irregular, so that the enamel line is incomplete. This explains the three spaces which can be seen in the external enamel. The culs-de-sac are entirely eliminated and the enamel edges are reduced to a minimum. The antero-posterior diameter is also greatly reduced. The branches of the pulp cavity are united at this point (*h*), where the roots begin to diverge. This tooth, *p.m.*⁴, being the youngest tooth in the grinding set, would not be worn down to the base of the crown until the horse reached thirty-five or more years, an age very rarely attained. Sections of grinding teeth on exhibition, particularly specimen No. 95, will be of interest as illustrating structure and wear.

The lower molars in their construction are quite similar to the uppers, one of the most striking differences being the absence of the culs-de-sac. Much the same result is acquired however, by the very deep folding in of the external enamel, which at various points almost meets toward the center (Fig. 35). The lower molars are also narrower in their transverse measurement.

There are several points which sometimes lead to a little confusion in observing the grinding surface of the molars. For example, at the bottom of the deeper concave surfaces of dentine between the enamel lines, there is a dark brown mark which is sometimes mistaken for a fourth material, but is merely a coloration of the dentine.

In the upper molars we generally find two small cavities (Fig. 33*A* and *C*), one in each cul-de-sac, which sometimes gives rise to questionings, and indeed there have been swindlers masquerading as veterinary dentists, who would gladly "fill" your horse's teeth for a reasonable consideration. These cavities however are perfectly normal, and we have precisely the condition here as in the incisors except that in the molar the cement is very much thicker, and the presence or absence of the cavity depends simply upon the thickness of the cement.

It will be seen that where the tooth comes in close contact with its next neighbor, the cement is missing, and indeed, sometimes the continuous line of external enamel is broken (Fig. 35). This is due to a slight wear on the side of the tooth. There is a strong tendency to crowd toward each other, thus preventing the forcing of food material between them. The slight vibration when in use, of each tooth in its alveolar socket, affords sufficient wear to keep them perfectly fitted together, and also explains the apparent break in the external enamel wall, which we frequently see. This crowding together, as well as many other features, can best be observed from the side view. On exhibition are a number of skulls having the bone cut away in order to expose to view the full length of the tooth.

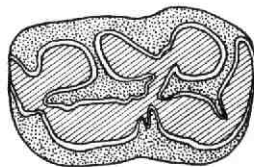


Fig. 35. Lower premolar (*p. m.* 3) of horse 8 or 9 years old

The three posterior teeth or molars, incline very considerably to the front, while the other three, the premolars, lean slightly toward them (Fig. 37), so that when pressure is applied on their grinding surfaces they are forced together like stones in the arch of a building. And as the teeth wear down to a point of smaller diameter, the last molar in extreme old age assumes an almost horizontal position (Fig. 37C).

The grinders from a lateral view present a most formidable looking dental battery. It gives some idea of their development when we find that a full set of premolars and molars, taken from a fair-sized horse of four or five years, will weigh about four pounds, the premolars being a little larger than the molars, a fact which is quite unusual, as in the great majority of mammals the premolars are very much inferior in size and development, as was also the case in the ancestral horse.¹

We see from the lateral view as well as from the grinding surface, the more highly specialized characters of the permanent tooth. Compare the very long crowns of figure 37A with the deciduous molar (Fig. 36), with its short crown, clearly defined base line and flaring roots.

Wear and movement of premolars and molars can be studied very readily from the skulls on exhibition, three of which are shown in figure 37.

For the present we will consider only the lower teeth, which will apply in a general way to the upper as well. The growth of the tooth begins at the grinding surface, inside the alveolar cavity, and proceeds toward the root, the tooth constantly moving upward, erupting and beginning to wear off before even the crown is complete.

Figure 37A shows the skull of a horse about five years old. The deciduous set has been shed and the permanent teeth are all in use, though the wolf tooth (*p.m.* $\frac{1}{1}$) is not present in this specimen.

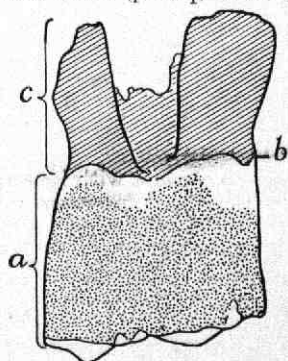


Fig. 36. Deciduous molar (*d. m.* $\frac{3}{3}$) of colt 11 months old. Natural size. *a*, crown; *b*, base of crown; *c*, root

The crown of *p.m.* $\frac{4}{4}$, the last tooth in the grinding set to reach the wearing line, is now fully grown, having already lost about half an inch from wear. It now measures three and a half inches, making a total length of four inches to be slowly moved upward and worn away. The roots are just beginning to develop at the base of the crown. The next tooth back of this, *m.* $\frac{1}{1}$, is the first permanent tooth to appear, hence the oldest one in the mouth. The crown is worn down much shorter than that of *p.m.* $\frac{4}{4}$, and the roots are quite evident, though still incomplete.

In figure 37B, showing a specimen about

¹ See page 15.

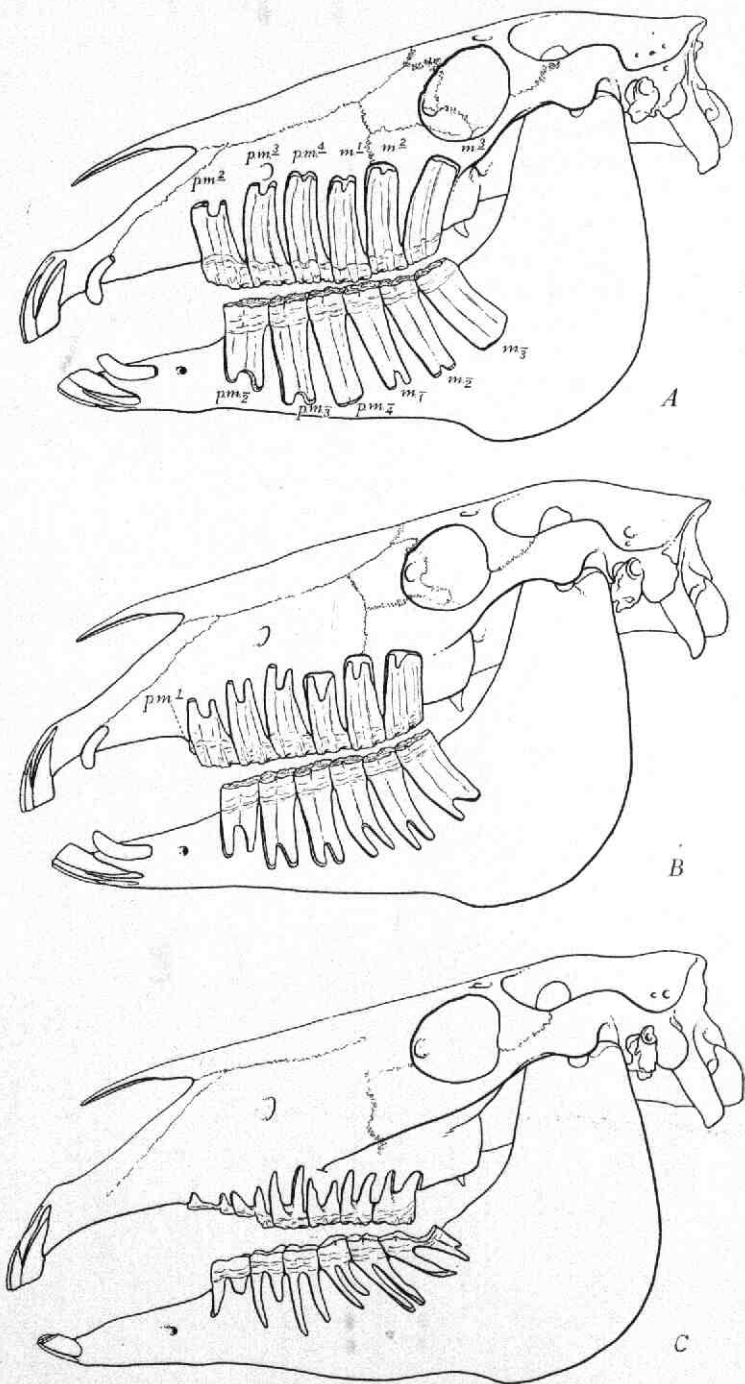


Fig. 37. Dental battery of adult horse

- A. Skull 5 years old. Permanent teeth all in use
 B. Skull 8 years old. Crowns reduced in length by wear and roots grown longer. Vestigial $p. m. 1$ present in this individual
 C. Skull 39 years old. Crowns almost worn away. Lower molars incline forward (The canines are absent in the female)

eight years old, the crowns have all been perceptibly reduced by wear, and the roots are all more or less developed, those of $m. 1$ being almost completely grown.

The oldest skull¹ in our exhibit is a specimen from a horse thirty-nine years old, figure 37C. The crowns are almost entirely worn away. Some of the roots are very much elongated, while others are thickened by an extreme reinforcement of cement. The molars are very much inclined forward, particularly $m. 3$, which is so worn as to almost separate the two roots. In the upper set, $p.m. 2$ is represented only by irregularly shaped lumps of cement which surround the last fragments of roots, prolonging to the utmost their very much impaired service.²

ERUPTION OF THE TEETH OF THE HORSE

THE calcification of all the deciduous teeth and also $m. 1$ begins before birth. When the colt is born, $d.i. 1$ and $d.m. 2$ and 3 are very near the surface of the gum, and generally erupt within two or three days; $d.m. 4$ is apt to follow during the first month; $d.i. 3$, the last deciduous tooth to erupt, makes its appearance as late as the eighth or tenth month. The three deciduous molars seem very large for the size of the young skull, their antero-posterior measurement being a little greater than that of their successors, the premolars, and occupy the entire space in the skull which will finally accommodate the whole grinding set, so that $m. 1$ is crowded far back, beginning its development in the alveolar cavity directly below the eye socket, as shown in figure 38A, a colt two days old. This discrepancy, however, is nicely adjusted. As fast as the increasing size of the skull will permit, the teeth are crowded forward with a horizontal movement, making room at the back for the development of the molars, each one resigning its birth-place below the eye, and moving forward to make room for the next one to fall in line, the operation being about the same in the lower set as in the upper teeth.

The incisors also encroach upon the region of the very small $d.c. 4$, particularly $d.i. 3$, which begins its development well back of the $d.c. 4$ (Fig. 38A). As the jaw grows, $d.i. 3$ passes forward and assumes its final position in front of the $d.c. 4$.

At eleven months (Fig. 38B) the deciduous teeth are all in use and most of them considerably worn. $m. 1$, which is due to erupt within about a month, has increased wonderfully in length and has moved forward, giving up the place under the eye to $m. 2$, which has already attained considerable size, and has advanced somewhat in its forward movement. Between the

¹ Since writing, a skull 42½ years old has been obtained, Specimen No. 138, on exhibition.

² Specimen No. 132 in wall case shows interesting examples of reinforcement by cement in extreme old age.

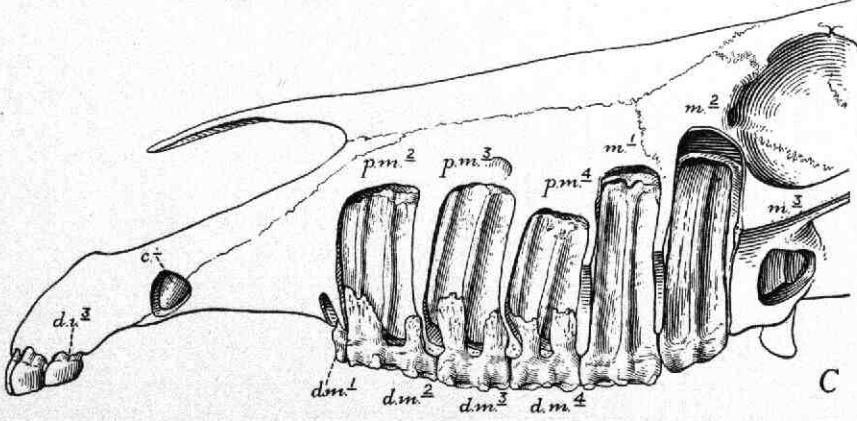
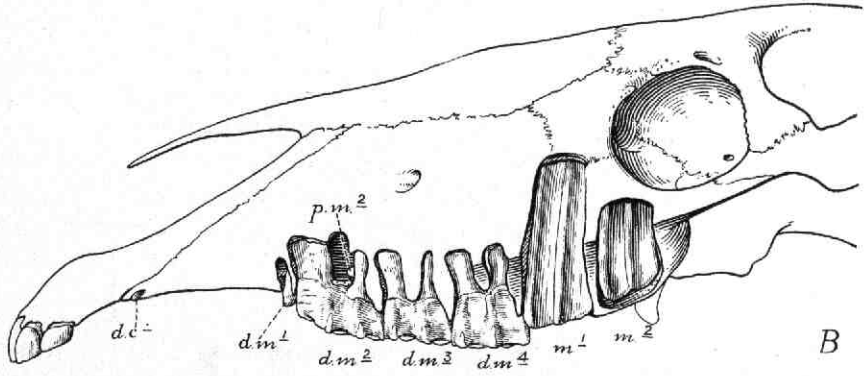
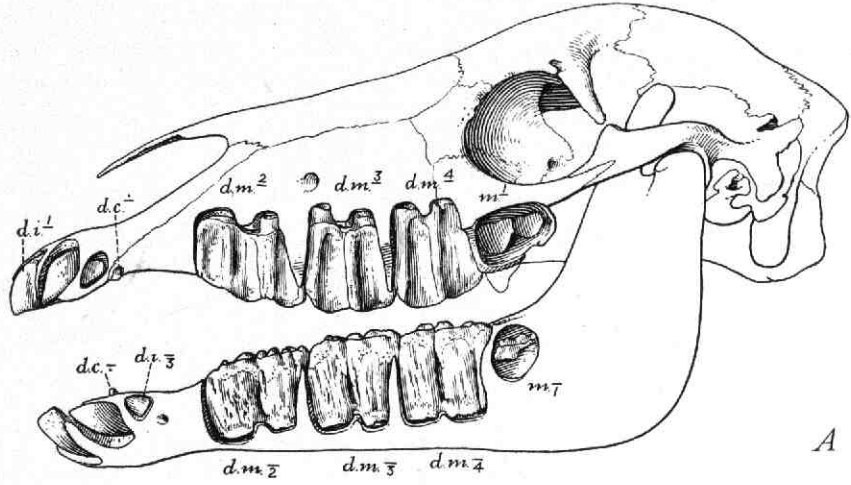


Fig. 38. Dentition of the colt

- A. Colt 2 days old showing deciduous teeth and beginning of m^1 .
- B. Eleven months old. Deciduous teeth somewhat worn and permanent set developing
- C. Two years old. Deciduous teeth very much worn and permanent set partly in use

roots of $d.m.$ ², which are flattened and widely spread apart, thus making room for the new tooth, the calcification of $p.m.$ ² is just beginning. $i.$ ¹/₄ is developing, and can be seen in specimen No. 38¹ far back in the alveolar cavity under the root of $d.i.$ ¹/₄, but is not visible in the figure.

In figure 38C, a colt of two years, calcification has begun in all the permanent teeth except $i.$ ³. The crowns of the deciduous molars are nearly worn away, while the roots are being absorbed by the growth of the premolars which have now attained a considerable size. $m.$ ¹/₂, the first permanent tooth to erupt, has been in wearing about a year and is just beginning to develop roots. $m.$ ² has cut through the gum and is very slightly worn. The alveolar cavity below the eye, is now lodging its last young tenant, $m.$ ³, which by the time it is full grown will have moved nearly two inches anterior to its present position.

SHEDDING THE TEETH

BEFORE the deciduous molars are shed the crowns are almost entirely worn away on the one side, while the roots are absorbed by the new teeth on the other, so that there is only a small fragment of tooth really lost. The time of shedding may vary a number of months: At three years approximately, $d.m.$ ²/₂ and ³/₃ are shed, exposing the grinding surface of $p.m.$ ²/₂ and ³/₃. $m.$ ¹/₁ and ²/₂ are in use and somewhat worn. At about three and one-half years $d.i.$ ¹/₄ will be shed. At four years the shedding of $d.m.$ ⁴/₄ follows very closely after, or sometimes during the eruption of $m.$ ³/₃. A little later $d.i.$ ²/₂ is shed. At about five or a little before, the canines will erupt and $d.i.$ ³/₃ are shed, and the permanent dentition is all in use. There are a number of specimens on exhibition in the wall case, not figured in this description, which it would be well to consult in connection with the shedding of teeth.

¹ On exhibition in wall case.

PRINCIPAL LITERATURE ON THE EVOLUTION OF THE HORSE

1826. MITCHILL, S. L. Catal. Org. Rem., New York. pp. 7, 8. (First record of fossil horses in America)
1841. OWEN, RICHARD. On *Hyracotherium leporinum*. Trans. Geol. Soc. (2), vol. vi, pp. 203-208. (Earliest record of the four-toed horse, not then recognized as ancestral to the horse family)
1860. HENSEL, R. Ueber *Hipparion mediterraneum*. Abhandlung. Akad. Wiss., Berlin. (Description of the three-toed horse of southern Europe, Pliocene epoch)
1863. RÜTMEYER, L. Beiträge zur Kenntniss der fossilen Pferde. Verhand. der naturforsch. Gesellsch. Basel, vol. iii, pp. 558-696. (Extinct horses of Europe, chiefly Quaternary)
1869. LEIDY, JOSEPH. Extinct Mammalian Fauna of Dakota and Nebraska. Journ. Acad. Nat. Sci. Phila., vol. vii. (Numerous American species of three-toed horses described in this volume)
1873. KOWALEVSKY, W. Sur l'*Anchitherium aurélianense* et sur l'Histoire Paléontologique des Chevaux. Mem. Acad. Imp. Sci. St. Petersburg, (7), vol. xx, pp. 1-73. (First attempt at reconstructing the ancestry of the horse from fossil specimens)
1874. MARSH, O. C. Notice of New Equine Mammals from the Tertiary Formations. Am. Journ. of Sci. (3), vol. vii, pp. 247-258. (First reconstruction of the ancestry of the horse from American fossils)
1875. BURMEISTER, H. Los Caballos Fósiles de la Pampa Argentina. Published for the Provincial Government of Buenos Aires Exhibit at the Centennial Exhibition, Philadelphia, 1876. (Description and illustration of *Hippidium* and other extinct horses of South America)
1879. MARSH, O. C. Polydactyle Horses, Recent and Extinct. Am. Journ. Sci. (3), vol. xvii, pp. 499-505. (American ancestry of the horse, with diagrams showing the evolutionary stages)
1885. COPE, E. D. "*Hyracotherium*" (*Eohippus*), in "Tertiary Vertebrata," Report U. S. Geol. Sur. Terrs., vol. iii, book 1, pp. 624-652, pll. xlix^a, xlix^b, xlix^c. (Description and figures of the skeleton of the four-toed horse)
- 1887-90. PAVLOW, MARIE. Etudes sur l'Histoire Paléontologique des Ongulés. Bull. Soc. Imp. Natur., Moscow
1891. SCOTT, W. B. Osteology of *Mesohippus*. Journ. Morphology, vol. v, pp. 3-73. (Description and figures of the skeleton of the three-toed horse of the American Oligocene)
1891. FLOWER, W. H. The Horse. London: Kegan Paul, Trübner

1896. WORTMAN, J. L. Species of *Hyracotherium*, etc. Bull. A. M. N. H., vol. viii, pp. 81-110. (Revision of the species of four-toed horses from the Lower Eocene of North America)
1900. LUCAS, F. A. The Ancestry of the Horse. McClure's, vol. 15, pp. 511-517, October. (Popular account with diagrams, etc.)
1901. GIDLEY, J. W. Tooth Characters and Revision of the North American Species of the Genus *Equus*. Bull. A. M. N. H., vol. xiv, pp. 91-142. (Revision of the prehistoric wild horses of the United States)
1903. MATTHEW, W. D. Evolution of the Horse. Guide Leaflet, No. 9, Am. Mus. Journ., vol. iii, No. 1 (Jan.). Second edition, 1905. (Popular guide to fossil horse specimens in American Museum)
1904. EWART, J. C. The Multiple Origin of Horses and Ponies. Washington: Smithsonian Report [1905] pp. 437-455
1904. HAYES, M. H. Points on the Horse. New York: Scribners
1904. OSBORN, H. F. New Oligocene Horses. Bull. A. M. N. H., vol. xx, pp. 167-179. (Species of three-toed horses from the American Oligocene)
1904. OSBORN, H. F. The Evolution of the Horse in America. Century Magazine, vol. lxi, pp. 1-17, November. (Popular account of the ancestry of the horse and of the origin of the several modern breeds)
1905. CLARKE, W. H. Horses' Teeth. (4th ed.). New York: Jenkins.
1905. OSBORN, H. F. Origin and History of the Horse. Address before the New York Farmers, Metropolitan Club, Dec. 19. (Popular account of the origin of the modern breeds of horses and of the horse family in general)
1907. LULL, R. S. The Evolution of the Horse Family. Am. Journ. Sci. (4), vol. xxiii, pp. 161-182. (Popular guide to fossil horse specimens in Yale Museum)
1907. GIDLEY, J. W. Revision of the Miocene and Pliocene Equidæ of North America. Bull. A. M. N. H., vol. xxiii, pp. 865-934. (Revision of species of later three-toed horses, with observations on the phylogeny)
1908. GRANGER, WALTER. A Revision of the American Eocene Horses. Bull. A. M. N. H., vol. xxiv, pp. 221-264. (Revision of species of four-toed horses)
1910. SISSON, SEPTIMUS. Text-Book of Veterinary Anatomy. Philadelphia: Saunders
1912. LIAUTARD, A. F. A. How to Tell the Age of the Domestic Animal. New York: Jenkins
1912. LYDEKKER, R. The Horse and its Relatives. New York: Macmillan

INDEX

Page numbers of illustrations are set in heavy face type

- Adaptation to environment, 28, 31
 Age determination by teeth, 49
Anchitherium, 17
 Arabian horse, 13, **38**, 42-43
 Ass, 11; African wild, 13, 31
 "Byerley Turk," 43
 Cuvier, Baron, 16
 Darley Arabian, 43
 Dental battery of adult horse, **57**
 Dental star, **47**, 49
 Desert type, 13
Diadiaphorus, **32**, 33
 Domestic horse, Origin of, 37
 Draft horse, **36**, 37, **38**, 39-41, **40**
Eohippus, **10**, **11**, 15-16, **28**, **30**; *venticolus*, **18**
Ephippus, 16, **28**
Equus, **10**, **11**, 12, 13, 21-22, **30**; *asinus*, 9, 13; *burchelli*, 9; *caballus*, **29**; *complicatus*, **29**; *grevyi*, 9; *hemionus*, 9; *libycus*, 37; *przewalskii*, 13, 39; *scotti*, 12, 22, **23**; *stenonis*, **29**; *zebra*, 9
 Equus Beds, 13
 Evolution, Cause of, 31; Parallel, 32-33
 Evolution of the Horse, 8, 14, **34-35**;
 of fore foot, **10**; of fore leg, **26**; of
 hind foot, **11**, **30**; of hind leg, **27**
 Ewart, J. C., 37, 41
 Foot, Evolution of, **10**, **11**
 Forest type, 13
 Fossil horses, 12-13
 Four-toed horses, 14-16
 Geological range of ancestors of horse,
 25
 Gidley, J. W., 12
 Godolphin Arabian, 43
 Granger, Walter, 16
Hipparion, 20, **29**, **30**; *whitneyi*, **19**, 21
Hippidium, 13, 22, **24**
 Huntington, Randolph, 38, 43
Hypohippus, 17
Hyracotherium, 14, 15, 27
 Keene, James R., 44
 "Kismet," 43
 Leg, Evolution of, **26**, **27**
 Libyan horse, 42-43
 Litopterna, 32
 Meaning of change in feet and teeth,
 25-29
Merychippus, **10**, **11**, 20, **29**, **30**
Mesohippus, **10**, **11**, 17, **31**; *intermedius*,
 17; *hairdi*, **18**, **28**
Miohippus, 17, **28**, **30**
 Molars, 9, 52, **56**
 "Nimr," **38**, 43
 Norseman's horse, 37, 39, 42
 One-toed horses, 21-22
Orohippus, 16, **28**
 Osborn, H. F., 13, 17, 21, 37, 43
 Owen, Richard, 14
Palaeotherium, 16
Parahippus, 17, 20, **28**
Plagiolophus, 16
 Plateau type, 13
Pliohippus, 20-21, 22
 Prehistoric man, 13, 37, 39
 Premolars, 52, **55**
Protohippus, 20-21
 Pseudo-horses, **32**, 33
 Quagga, 13
 Race horse, 37, 43-44, **45**
 Ridgeway, William, 37, 42
 Shetland pony, **36**, 37, 41-42; com-
 pared with draft horse, **36**, 41
 Skeleton of horse and man, **2**, 39
 Steppe type, 13
 "Sysonby," 44, **45**
 Teeth of colt, **59**
 Teeth of horse, 9, 44-60, **57**; designa-
 tion, 50-51; eruption of, 58-60;
 evolution of, **28**; pattern of enamel,
 54; shedding, 60, specialization, 47,
 structure, 46-48; wearing of, **47**, 48, 53
 Teeth of *Equus*, 22, of *Eohippus*, 15, of
 Ephippus, 16, of *Hipparion*, 21; of
 Merychippus, 20, of *Mesohippus*, 17;
 of *Orohippus*, 16; of *Parahippus*, 20
Thoatherium, **33**
 Three-toed horses, 17-21
 Touchstone, S. F., 43
 Whitney, William C., 2, 38
 Wolf tooth, 51-52
 Wortman, J. L., 15
 Zebra, 11, 13, 31

POPULAR PUBLICATIONS
OF THE
AMERICAN MUSEUM OF NATURAL HISTORY

ILLUSTRATED GUIDE LEAFLETS

These describe some exhibit, or series of exhibits, of special interest or importance, or may deal with the contents of an entire hall.

Many of the earlier leaflets are out of print, but new editions of those most in demand are in course of preparation.

THE COLLECTION OF MINERALS. By LOUIS P. GRATACAP, A.M., Curator of Mineralogy. February, 1902. *Price, 5 cents.*

The minerals have been moved since this leaflet was issued, but it contains much information about the collection and a number of figures of interesting specimens.

NORTH AMERICAN RUMINANTS. By J. A. ALLEN, Ph.D., Curator of Mammalogy and Ornithology. *Revised edition*, February, 1904. *Price, 10 cents.*

Describes the rapidly disappearing large game of North America, such as the bison, elk and mountain sheep.

THE ANCIENT BASKET MAKERS OF SOUTHEASTERN UTAH. By GEORGE H. PEPPER, Assistant in Anthropology. April, 1902. *Second edition*, May, 1909. *Price, 10 cents.*

PRIMITIVE ART. July, 1904. *Price, 15 cents.*

THE BATRACHIANS OF THE VICINITY OF NEW YORK CITY. By RAYMOND L. DITMARS, Curator of Reptiles, New York Zoölogical Park. October, 1905. *Price, 15 cents.*

THE BIRDS OF THE VICINITY OF NEW YORK CITY. By FRANK M. CHAPMAN, Curator of Ornithology. April-July, 1906. *Price, 15 cents.*

PERUVIAN MUMMIES. By CHARLES W. MEAD, Assistant Curator, Department of Anthropology. March, 1907. *Price, 10 cents.*

THE METEORITES IN THE FOYER OF THE AMERICAN MUSEUM OF NATURAL HISTORY. By EDMUND OTIS HOVEY, Ph.D., Curator, Department of Geology and Invertebrate Palæontology. December, 1907. *Price, 10 cents.*

The collection, which represents about 500 falls, numbering some 2,000 specimens, includes the great "Ahnighito" meteorite, weighing 36½ tons, brought from Greenland by Peary, the strange "Willamette" meteorite and the "Canyon Diablo" which contains minute diamonds.

THE HABITAT GROUPS OF NORTH AMERICAN BIRDS. By FRANK M. CHAPMAN, Curator of Ornithology. February, 1909. *Price, 15 cents.*

These celebrated groups are designed to illustrate not only the habits but also the haunts, or habitats, of the species shown. The backgrounds are careful studies from nature and each represents some definite locality. Twenty-two of these groups are shown in this leaflet.

THE INDIANS OF MANHATTAN ISLAND AND VICINITY. By ALANSON SKINNER, Assistant Curator, Department of Anthropology. September, 1909. *Price, 10 cents.*