



Bauerkeller's new embossed plan of London, 1841

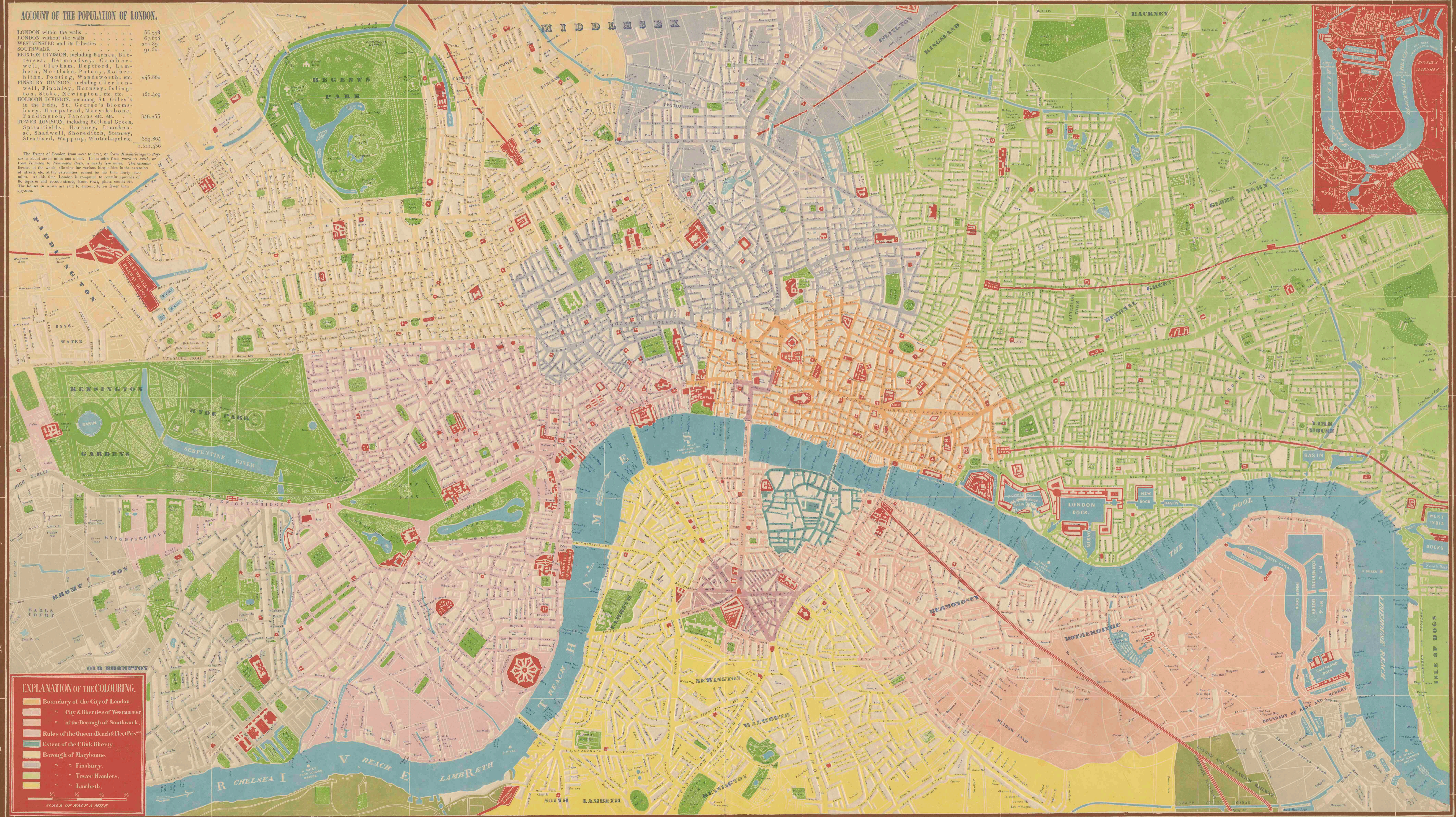
<https://hdl.handle.net/1874/368365>

BAUERKELLER'S NEW EMBOSSED PLAN OF LONDON 1841.

ACCOUNT OF THE POPULATION OF LONDON.

LONDON within the walls	55,978
LONDON without the walls	69,878
WESTMINSTER and its Liberties	203,891
SOUTHWARK	91,501
BRIXTON DIVISION, including Barnes, Battersea, Bermondsey, Camberwell, Clapham, Deptford, Lambeth, Norwiche, Putney, Rotherhithe, Tooting, Wandsworth, etc.	245,866
FINSBURY DIVISION, including Clerkenwell, Finsbury, Hoxsey, Islington, Stoke, Newington, etc. etc.	151,409
HOLBORN DIVISION, including St. Giles's in the Fields, St. George's Bloomsbury, Hampstead, Mary-to-bone, Paddington, Pancras etc. etc.	346,255
TOWER DIVISION, including Bethnal Green, Spitalfields, Hackney, Limehouse, Shadwell, Shoreditch, Stepney, Stratford, Wapping, Whitechapel etc.	359,864
Total	1,521,436

The Extent of London from west to east, or from Rotherhithe to Poplar is about seven miles and a half. The breadth from north to south, or from Islington to Newington Butts, is nearly five miles. The circumference of the whole, allowing for various inequalities in the extension of streets, etc. at the extremities, cannot be less than thirty-two miles. At this time, London is computed to contain upwards of 80 Squares and 10,000 streets, lanes, rows, places courts etc. The houses in which are said to amount to no fewer than 197,000.




EXPLANATION OF THE COLOURING.

- Boundary of the City of London.
- City & Liberties of Westminster
- of the Borough of Southwark.
- Rules of the Queens Bench & Fleet Prison
- Extent of the Clink Liberty.
- Borough of Marybone.
- Finsbury.
- Tower Hamlets.
- Lambeth.

1/2 1/4 1/8

SCALE OF HALF A MILE.



INDEX
TO
BAUERKELLER'S
NEW EMBOSSED
PLAN OF LONDON
and its Environs

1841

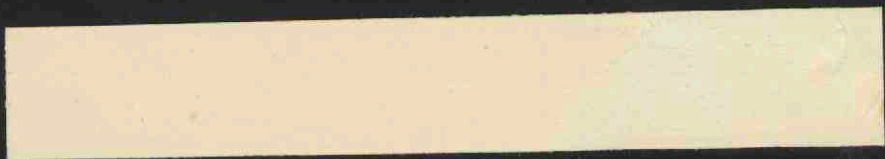
LONDON
ACKERMANN & Co.
96 STRAND
PARIS
Bauerkeller & Co.

by Achensitz 335

PLANT
BAUERKAMPERS
LONDON
1841
LONDON
LONDON

55. Kaart van L o n d o n.

G.Bauerkeller. Reliëfdruk. 1841



u. b.
Interact

INDEX
TO
BAUERKELLER'S
NEW
EMBOSSSED PLAN OF LONDON.

EXPLANATION.

THE New Embossed Plan of London, to which this Alphabetical List belongs, is divided into squares of miles in the length, and half-miles in the breadth, for measuring distances from St. Paul's; with Letters of Reference to the streets, squares, public buildings, &c. &c. The Capital Letters are at the top and bottom, and the Small Letters on the side.—EXAMPLE: *Strand* will be found under the letters D e, and the *Post Office* in the square which contains the letters E d.

- E g ABBEY street, Bermondsey street
- F c Abbey street, Bethnal-green road
- E e Abchurch lane, Lombard street
- A b Aberdeen place, Maida hill
- E c Abingdon place, Goswell road
- C f Abingdon street, Millbank street
- F g Ackworth buildings, Blue-Anchor rd.
- F a Acton lock, St. Margaret street
- F a Acton place, Kingsland road
- D b Acton street, Cromer street
- E h Acton street, Walworth
- B d Adam mews, Edgeware road
- C e Adam street, Adelphi terrace
- B d Adam street, Edgeware road
- B d Adam street, Manchester square
- E g Adam street, New Kent road
- F g Adam street, Rotherhithe
- B d Adam street East, Edgeware road
- B e Adam's mews, South-Audley street
- D f Addington place, York road
- D e Addle hill, Upper Thames street
- C e Adelaide street, Strand
- C e Adelphi terrace, Adelphi wharfs
- C e Adelphi Theatre, Strand
- C e Adelphi wharfs, Strand
- C e Admiralty, Whitehall
- C b Adult Orphan Asylum, Regent's pk.
- C e Agar street, Strand
- C e Albany, Piccadilly
- B b Albany cottage, Regent's park
- E h Albany place, Albany rd. Kent rd.
- E h Albany road, Kent road
- C b Albany street, New road
- C b Albany street, Little, New road
- E h Albany terrace, Albany road
- C e Albemarle street, Piccadilly
- D c Albemarle street, St. John's square
- D a Albion cottages, Islington
- D a Albion grove, Thornhill road
- D e Albion place, Great Surrey street
- E g Albion place, Walworth
- F e Albion street, Commercial road
- D e Albion street, Great Surrey street
- F g Albion street, Rotherhithe
- B d Albion street, Uxbridge road

- D e Albion terrace, Blackfriars bridge
- G e Albion terrace, Limehouse
- E d Aldermanbury, Cheapside
- E d Aldersgate street, West Smithfield
- C b Aldenham street, Clarendon square
- C b Aldenham terrace, Pancras place
- G c Alderney place, Mile end
- F e Aldgate, Leadenhall street
- A f Alexander place, Alexander square
- A f Alexander square, Brompton
- E h Alfred place, Kent road
- D b Alfred place, Goswell-street road
- C c Alfred place, Chenies street
- G d Alfred street, Mile-end road
- C g Alfred street, Vincent square
- G d Alfred terrace, Alfred street
- F e Alie street, Great, Goodman's fields
- F e Alie street, Little, Church lane
- D g Allen street, Back lane
- D c Allen street, Goswell street
- E e Allhallows lane, Upper Thames st.
- E e Allhallows stairs, Upper Thames st.
- C f Allington street, Pimlico
- C f Almonry, Tothill street
- B b Alpha Cottages, Alpha road
- B b Alpha place, Alpha road
- B b Alpha road, Edgeware road
- B c Alsop's mews, Upper Baker street
- B c Alsop's place, Upper Baker street
- E h Amelia place, Kent road
- F g Amelia row, Grange road
- D h Amelia street, Walworth road
- D d Amen corner, Warwick lane
- E c America square, Minorities
- E f America street, Great Guildford st.
- B g America terrace, Sloane square
- E g Amicable row, Long lane
- D b Ampton street, Gray's inn road
- D b Amwell street, Claremont square
- F f Anchor-and-Hope alley, Wapping
- G d Anchor street, Stepney
- E b Anderson's place, City road
- C h Anderson's walk, Vauxhall walk
- C d Andrew street, Great, Long-acre
- C d Andrew street, Little, Long-acre

- E d Angel alley, Little Moorfields
 F d Angel alley, Whitechapel
 D h Angel court, Walworth
 F e Angel gardens, Ratcliff highway
 E d Angel street, St. Martin's-le-grand
 D b Angel terrace, Pentonville
 G c Ann street, Globe lane
 F e Ann street, New road
 D b Ann street, Pentonville
 D f Anne street, Waterloo road
 E a Annett's crescent, Lower rd Islington
 F b Ann's place, Hackney road
 F e Anthony street, Cornwall street
 D f Apollo buildings, Waterloo road
 B f Arabella row, Lower Grosvenor pl.
 G e Arbour place, Commercial road
 G e Arbour square, Commercial road
 G c Arbour street, Commercial road
 C e Arcade, Piccadilly
 D d Arch row, Lincoln's-inn fields
 D g Archbishop of Canterbury's gardens
 C d Archer street, Great Windmill street
 C d Argyle place, Regent street
 C b Argyle street, New road
 C d Argyle street, Great, Oxford street
 C d Argyle street, Little, Regent street
 C a Arlington street, Camden town
 C e Arlington street, Piccadilly
 A h Arthur street, King's road
 D c Arthur street, Old road
 C e Arthur street, Strand
 F e Artie street, Ratcliff highway
 B a Artillery barracks, Portland town
 E c Artillery ground, Finsbury place
 E f Artillery lane, Fair street
 E c Artillery place, Finsbury square
 C f Artillery place, Strutton ground
 D f Artillery street, Wellington street
 E d Arts lane, Petticoat lane
 D e Arundel stairs, Strand
 F c Arundel street, Bethnal green
 D e Arundel street, Strand
 C b Ashby street, Norfolk street
 D c Ashby street, Northampton square
 E c Ashford street, Haberdashers' walk
 F b Ash grove, Cambridge heath
 E b Aske street, New North road
 E b Aske terrace, New North road
 G d Assembly row, Mile-end road
 D f Astley's theatre, Westminster brid. rd.
 E g Asylum for Deaf & Dumb, Kent rd.
 D g Asylum, Westminster road
 D g Atfield place, Lambeth walk
 G e Athenæum, Commercial road
 B d Audley street, North, Oxford street
 B e Audley street, South, Grosvenor sq
 F g Augusta place, Deptford, Lower rd.
 F g Augustus row, Grange road
 C a Augustus square, Augustus street
 C a Augustus street, Cumberland market
 E d Austin Friars, Throgmorton street
 E d Austin-Friars' passage, London wall
 F c Austin street, Hackney road
 E a Avebury Canal
 B a Avenue road, Regent's park
 D e Aylesbury street, St. John's street
 E g Ayliffe row, New Kent road
 E g Baalzephon street, Long lane
 D c Back hill, Leather lane
 G c Back lane, Globe town
 D h Back lane, Kennington
 F e Back road, Upper Shadwell
 C b Back walk, Somers' town
 F c Bacon street, Great, Thomas street
 F c Bacon street, Little, Brick lane
 D b Bagnigge place, Old road
 C d Bainbridge street, High street
 B e Baker street, Portman square
 E f Baker's alley, Tooley street
 G a Baker's almshouses, Hackney
 B h Baker's lane, Millbank
 D c Baker's row, Coppice row
 F d Baker's row, Church street
 D b Baker street, Middleton square
 D d Baldwin's gardens, Leather lane
 E e Baldwin's street, City road
 E e Baltic coffee-house, Threadneedle st.
 G h Baltic place, Lower road, Deptford
 E c Baltic street, Golden lane
 E d Bank of England, Threadneedle st.
 E e Bank-end stairs, Bankside
 E e Bankside, Bridge street
 E c Banner street, Bunhill row
 F a Bannister lane, Hackney
 E f Barclay's brewhouse, Bridge street
 C f Barge-houses, Bishop's walk
 A d Bark place, Moscow road
 B c Barlow street, High street
 D a Barnsbury road, Pentonville
 D a Barnsbury street, Upper street
 B f Barracks, Gray's-inn road
 D f Barron's buildings, Waterloo road
 D f Barron's place, Waterloo road
 D b Baron's street, Pentonville
 E h Barossa terrace, Walworth
 A e Barracks, Kensington
 B d Barrett's court, Henrietta street
 D h Barrett's street, Vauxhall
 F b Barrossa terrace, Hackney
 B a Barrow-hill reservoir, Portland town
 B a Barrow-hill place, Portland town
 B a Barrow-hill road, Wellington road
 E d Bartholomew lane, Royal Exchange
 E d Bartholomew close, Aldersgate
 D d Bartlett's buildings, Holborn hill
 E d Basinghall street, London wall
 E e Basing lane, Bow lane
 C d Bateman's buildings, Soho square
 E c Bateman's row, Shoreditch
 C c Bath place, Fitzroy square
 E c Bath place, Bath street
 D c Bath street, Coppice row
 F b Bath street, Hackney road
 E c Bath street, Old street
 F c Bath street, Belvidere place
 E g Bath terrace, Horsemonger lane
 A d Bathurst mews, Gt. Junction street
 A d Bathurst street, Gt. Junction street
 D b Battle bridge, Gray's-inn lane
 F e Batty's street, White-horse street
 C a Bayham street, Camden town
 A d Bayswater
 A d Bayswater street, Bayswater
 A d Bayswater terrace, Bayswater
 C d Beak street, Golden square
 D f Bean street, Borough road
 D d Bear alley, Faringdon street
 B e Bear court, Knightsbridge
 E e Bear garden, Bankside
 D f Bear lane, Gravel lane
 C e Bear street, Leicester square
 D d Beauchamp street, Leather lane

- D e Beaufort buildings, Strand
 C c Beaufort place, New road
 G d Beaumont row, Mile-end road
 G d Beaumont square, Mile-end road
 B c Beaumont street, High street
 G d Beaumont street, Mile-end road
 E a Beauvoir terrace, Regent's canal
 E h Beckford row, Walworth.
 C e Bedfordbury, St. Martin's lane
 C e Bedford court, Bedford street
 C c Bedford place, Russell square
 C g Bedford place, Brewer street
 C c Bedford place, Upper, Russell sq.
 D d Bedford row, Holborn
 F d Bedford square, Commercial road
 C d Bedford square, Tottenham-court rd.
 C d Bedford street, Bedford square
 F d Bedford street, Commercial road
 D c Bedford street, Leather lane
 E h Bedford street, Lock's fields
 D d Bedford street, Red-lion square
 C e Bedford street, Strand
 E d Beech street, Barbican
 E e Beer lane, Great Tower street
 E h Belgrade place, East lane
 C h Belgrave place, South Lambeth
 B g Belgrave place, Lower, Victoria rd.
 B g Belgrave place, Upper, Victoria road
 C g Belgrave road, Pimlico
 B g Belgrave road, Victoria road
 E d Bell alley, Coleman street
 E c Bell alley, Golden lane
 E c Bell alley, Goswell street
 D c Bell alley, Turnmill street
 A f Bell and Horns, Brompton
 F f Bell dock
 E d Bell lane, White street
 B c Bell street, Caroline place
 G e Bell-wharf stairs, Shadwell
 D d Bell yard, Fleet street
 C h Belmont terrace, South Lambeth
 C d Belton street, Broad street
 D f Belvidere road, Waterloo road
 D e Belvidere wharf, Belvidere road
 F c Belvidere place, Bethnal green
 D f Belvidere place, Borough road
 C g Belvoir terrace, Vauxhall-bridge rd.
 G c Bencroft's hospital, Mile-end road
 E e Benege street, Leadenhall street
 E g Bengal terrace, New Kent road
 D c Benjamin street, Red-lion street
 F c Bennet's place, Bethnal-green road
 D e Bennet's hill, Upper Thames street
 D h Bennet's row, Kennington lane
 C f Bennet street, Prince's street
 C d Bennet street, Rathbone place
 C e Bennet street, St. James's street
 D e Bennet street, Stamford street
 B d Bentinck street, Manchester square
 B e Berkeley square, Piccadilly
 C e Berkeley street, Berkeley walk
 D g Berkeley street, Lambeth walk
 D c Berkeley street, St. John's lane
 B d Berkeley st. Lower, Manchester sq.
 B d Berkeley st. Upper, Portman square
 F f Bermondsey
 E g Bermondsey building, Berm. new rd.
 E g Bermondsey new road
 E g Bermondsey square, Grange road
 E f Bermondsey street, Tooley street
 G e Bermuda street, Commercial road
 C c Bernard street, Russell square
 C d Berners street, Oxford street
 F e Berners street, White-horse street
 C d Berners mews, Castle street
 E g Berwick place, Grange road
 C d Berwick street, Oxford street
 D g Bethlehem Hospital, Lambeth
 F c Bethnal green
 F c Bethnal-green road
 F e Betts' street, Ratcliff highway
 E d Bevis Marks, St. Mary-axe
 C b Bidborough street, New road
 E e Billiter lane, Leadenhall street
 E e Billiter square, Billiter lane
 E e Birchin lane, Cornhill
 F b Bird-cage walk, Hackney road
 C f Bird-cage walk, St. James's park
 B d Bird street, Oxford street
 F f Bird street, Wapping
 D g Bird street, West square
 G b Bishop Bonner's Hall
 D d Bishop's court, Old Bailey
 C g Bishop's walk, Fore street
 E d Bishopsgate street, Cornhill
 F d Blackbird alley, St. John's street
 B d Blackburn mews, Grosvenor sq.
 F d Black-eagle street, Brick lane
 H g Blackett's dock, Isle of Dogs
 D e Blackfriars bridge
 G h Black-horse square, Deptford
 C d Black-horse yard, Tottenham-ct, rd.
 A d Black-lion lane, Bishop's road
 C e Black-lion stairs, Strand
 F f Blackman street, Borough
 D d Blackmore street, Drury lane
 B c Blandford's mews, Blandford street
 B b Blandford square, Lisson grove
 B c Blandford street, Baker street
 A g Blenheim street, Marlborough sq.
 C d Blenheim street, Oxford street
 D f Blind School, London road
 F c Blisset street, Bethnal-green road
 E d Blomfield street, London wall
 C g Bloomberg st. Vauxhall-bridge road
 D c Bloomsbury burial-ground, Hunter st.
 C d Bloomsbury place, Bloomsbury sq.
 C d Bloomsbury square, High Holborn
 E d Blossom street, Norton Folgate
 F g Blue anchor, Blue-anchor road
 E c Blue-anchor alley, Bunhill row
 G b Blue-anchor lane
 F g Blue-anchor lane, Rotherhithe
 F g Blue-anchor road, Bermondsey
 F g Blue-anchor road, Rotherhithe street
 E f Blue-ball court, Mint street
 F e Blue-gate fields, Ratcliff highway
 C f Board of Control, Cannon row
 B b Boat-house, Regent's park
 C d Bolton street, Broad street
 D e Bond place, Waterloo road
 D g Bond street, Borough road
 A g Bond street, Marlborough square
 C h Bond street, Vauxhall
 D e Bond street, Waterloo road
 C d Bond street, New, Oxford street
 C e Bond street, Old, Piccadilly
 G b Bonner's-hall bridge, Regent's canal
 F d Booth street, Brick lane
 E c Booth street, Old-street road
 E f Borough
 D f Borough road, London road

- B b Boston place, Boston street
 B b Boston street, Park road
 D c Boswell court, Devonshire street
 F f Boswick street, Old Gravel lane
 B h Botanic garden, Chelsea
 D h Botanic garden, Kennington
 B b Botanic garden, Regent's park
 B f Botanic garden, Sloane street
 G a Botany Bay, Hackney
 E e Botolph's lane, Lower Thames street
 G h Boundary of Kent and Surrey
 D d Bouverie street, Fleet street
 F d Bow-bell alley, Petticoat lane
 G d Bow Common
 E e Bow lane, Cheapside
 G c Bow road, Mile-end road
 D d Bow street, Hart street
 B c Bowling-green builds, Lisson grove
 D c Bowling-green lane, Coppice row
 E c Bowling-green row, Hoxton square
 C f Bowling street, Dean's yard
 B c Bowling street, High street
 G e Bowyer street, Commercial road
 C d Boyle street, Regent street
 D f Brad place, Cornwall road
 D f Brad street, Cornwall road
 B a Bradley street, Alpha road
 E g Brandon street, Bermondsey new rd.
 E g Brandon street, New Kent road
 D d Brazier's buildings, Faringdon street
 E e Bread street, Cheapside
 E e Bread-street hill, Bread street
 G e Brewer's almshouse, Stepney
 C f Brewer street, Pimlico
 C e Brewer street, Regent street
 C d Brewer street, Thorney
 E e Brewhouse, Golden lane
 F c Brick lane, Church street
 E c Brick lane, Old street
 E g Bricklayers' Arms, Kent street
 B e Brick street, Park lane
 D d Bride lane, Fleet street
 D g Bridewell hosp. Bridge st. Blkfrs
 C g Bridewell, Vauxhall-bridge road
 C f Bridge court, Bridge street
 G h Bridge place, Deptford lower road
 D f Bridge road, Westminster bridge
 D f Bridge road, Bridge street
 D e Bridge street, Blackfriars
 E f Bridge street, Southwark bridge
 C h Bridge street, Faringdon street
 C f Bridge street, Westminster bridge
 E d Bridgewater square, Barbican
 C b Bridgewater street, Clarendon street
 C d Bridle lane, Golden square
 E b Bridport place, New North road
 D g Brighton place, New Kent road
 D b Brighton street, Cromer street
 C b Brill crescent, Phoenix row
 C b Brill place, Brill crescent
 C b Brill row, Brill crescent
 C b Brill terrace, Brill crescent
 D e Bristow street, Bridge street
 E d Britain, Little, Aldersgate street
 E b Britannia crescent, Hoxton road
 E a Britannia row, Lower rd. Islington
 D b Britannia street, Battle-bridge
 C d British Museum, Bloomsbury
 E b Brit's building, Gloucester terrace
 D d Broad court, Drury lane
 E c Broad place, Leadenhall street
 E d Broad-street buildings, London wall
 E d Broad street, London wall
 F f Broad street, Old Gravel lane
 C g Broad street, Prince's street
 G e Broad street, Shadwell
 F c Broad street, Shoreditch
 C d Broad street, Wardour street
 D e Broad wall, New cut
 E f Broadway, St. Thomas street
 C f Broadway, Tothill street
 D b Broadway, Upper street
 D c Broad yard, St. John's street
 E e Broken wharf, Upper Thames street
 G d Bromley street, Commercial road
 A f Brompton
 A f Brompton chapel
 A f Brompton church, Brompton
 A f Brompton crescent, Brompton square
 A f Brompton grove, Gore lane
 A f Brompton park, Brompton
 A f Brompton row, Brompton square
 A f Brompton square, Brompton
 A g Brompton villa, Brompton
 E h Broni's place, Walworth
 B d Brook's mews, Davies street
 C b Brook place, Mary street
 G e Brook street, Back lane
 D d Brook street, Holborn bars
 C c Brook street, Mary street
 D g Brook street, Walcot place
 C d Brook street, Little, Hanover square
 C b Brook street, Little, Mary street
 B d Brook street, Lower, Grosvenor sq.
 B d Brook street, Upper, Grosvenor sq.
 B d Brown street, Duke street
 F d Brown's lane, Brick lane
 F f Brown's wharf, Wapping
 C d Brownlow street, Drury lane
 D d Brownlow street, Holborn
 E b Brudenell place, New North road
 E c Brunswick place, City road
 F g Brunswick place, Grange road
 C g Brunswick row, Grey-coat place
 D c Brunswick square, Hunter street
 F b Brunswick street, Hackney road
 D e Brunswick street, Stamford street
 F e Brunswick street, White-horse street
 D a Brunswick terrace, Bermondsey rd.
 C e Bruton place, Berkeley square
 C e Bruton street, Berkeley square
 B e Bryanston mews, Bryanston square
 B e Bryanston place, Bryanston square
 B e Bryanston square, Montague square
 B d Bryanston street, Portman street
 D d Brydges street, Strand
 C c Buckingham place, Fitzroy square
 C f Buckingham row, James street
 C c Buckingham street, Buckingham pl.
 C c Buckingham street, Strand
 E e Bucklersbury, Cheapside
 C d Buckridge street, High street
 E e Budge row, Queen street
 A f Builder's row, Kensington
 E d Bull-and-Mouth street, Newgate st.
 G f Bull-head dock
 D e Bull stairs, Upper-Ground street
 G c Bully Ray row, Green street
 E c Bunhill row, Old street
 E h Burdett street, Walworth common
 D f Burdett street, Westminster road
 A g Burial-ground, Bond street

- F c Burial ground, Church street
 D e Burleigh street, Strand
 C e Burlington gardens, Old Bond street
 C e Burlington house, Piccadilly
 E h Burlington place, Kent road
 C d Burlington street, New, Regent st.
 C e Burlington st. Old, Burlington house
 F e Buross street, Ebury square
 F f Burr street, Wapping
 C b Burton crescent, New road
 B g Burton street, Ebury square
 C b Burton street, New road
 E h Burton street, Walworth
 B d Burwood crescent, Oxford square
 B d Burwood place, Edgeware road
 B c Burying-gr. passage, Paddington st.
 C d Bury street, Bloomsbury square
 C e Bury street, Jernyn street
 A e Bury street, Leader lane
 E d Bury street, St. Mary Axe
 F e Busby street, Edward street
 E e Bush lane, Thomas street
 G e Butcher row, Brook street
 E d Butcherhall lane, Newgate street
 E d Butler's alley, Moor lane
 E f Butler's buildings, Great Russell st.
 G c Butt street, Green street
 E d Butterfly alley, Milton street
 E c Buttesland street, East rd. City rd.
 D b Buxton street, Goswell road
 C e Byng street, Gordon square
 F e Cable street, Rosemary lane
 D a Cabson square, Theberton street
 B f Cadogan place, Cadogan square
 B f Cadogan place, Little, Cadogan sq.
 B f Cadogan place, Upper, Cadogan sq.
 B f Cadogan square, Sloane street
 B g Cadogan street, Marlborough road
 B f Cadogan terrace, Sloane street
 B d Calmel buildings, Orchard street
 B h Calthorpe place, Paradise row
 D c Calthorpe street, Gray's-inn lane
 F b Cambridge circus, Hackney road
 F b Cambridge heath, Hackney road
 C b Cambridge place, Cambridge terrace
 F b Cambridge place, Hackney road
 F e Cambridge road, Hackney road
 B d Cambridge square, Edgeware road
 F c Cambridge street, Bethnal-green rd.
 B d Cambridge street, Edgeware road
 F b Cambridge street, Hackney road
 F b Cambridge terrace, Cambridge heath
 C b Cambridge terrace, Regent's park
 F e Camden place, Bethnal-green road
 C a Camden place, Camden town
 F e Camden street, Bethnal-green road
 E h Camden street, East lane
 C a Camden street, Fig lane
 F d Camel row, Globe lane
 E d Camomile street, Bishopsgate st.
 E e Cannon street, Dowgate
 D f Cannon street, Great Suffolk street
 F e Cannon street, Hatcliff highway
 E a Canonbury street, Lower street
 D g Canterbury buildings, Lambeth
 D g Canterbury place, Lambeth
 D h Canterbury place, Newington
 D g Canterbury row, Little, Lambeth walk
 D f Canterbury street, Waterloo road
 H e Canton place, Commercial road
 G g Cape of Good Hope, Great road
 B a Capland street, Lisson grove
 C c Carburton street, Fitzroy square
 C b Cardington street, Hampstead road
 D d Carey street, Chancery lane
 D f Carlisle house, Lambeth
 F c Carlisle lane, Mount street
 D f Carlisle place, Lambeth
 A c Carlisle street, New Church
 F c Carlisle street, St. John street
 C d Carlisle street, Soho square
 A c Carlisle st. Great, Great North street
 A e Carlisle street, Little, Carlisle street
 C e Carlton-house street, Pall-mall
 C e Carlton terrace, St. James's park
 C d Carnaby street, Golden square
 D c Carolino place, Edgeware road
 E b Caroline place, Hoxton road
 A g Caroline place, Marlborough road
 D c Caroline place, Mecklenburgh sq.
 A d Caroline place, Moscow road
 C d Caroline street, Bedford square
 C a Caroline street, Camden town
 B f Caroline street, Coleshill street
 G e Caroline street, Commercial road
 F b Caroline street, Hackney road
 B e Carrington mews, Curzon street
 B e Carrington street, Curzon street
 B e Carrington street, Little Hertford st.
 D e Carter lane, St. Paul's
 F d Carter street, Brick lane
 C f Carter street, Broadway
 D h Carter street, Walworth road
 C f Castle lane, Brewer street
 E f Castle street, Bridge street
 C d Castle street, Drury lane
 F d Castle street, Falcon street
 D d Castle street, Holborn hill
 E d Castle street, Houndsditch
 E c Castle street, Royal row
 D c Castle street, Saffron hill
 F c Castle street, Shoreditch
 C d Castle street, Great, Oxford market
 C d Castle street, Little, Oxford market
 D d Castle street, New, Strand
 H e Castor street, Commercial road
 E d Cateaton street, Aldermanbury
 F e Catherine street, Commercial road
 E c Catherine street, Old-street road
 G d Catherine street, Old road
 D e Catherine street, Strand
 B b Catholic chapel, Grove road
 B g Catholic Chapel, New road
 B c Cato street, John street
 C g Causton street, Vauxhall bridge
 C d Cavendish square, Margaret street
 C d Cavendish street, Oxford street
 E b Cavendish street, New, New north rd.
 C c Cavendish street, New, Up, Harley st.
 C e Cecil court, Castle street
 D d Cecil street, Strand
 H c Cemetery, City and Tower Hamlets
 D b Chad's Place, Grays-inn lane
 D b Chadwell street, Middleton square
 C b Chalton street, Somers town
 G d Chambers street, Stepney
 F e Chambers street, White-lion street
 D d Chancery lane, Holborn
 C d Chandos street, Cavendish square
 C e Chandos street, St. Martin's lane
 B d Chapel court, Cavendish square
 A f Chapel row, Brompton square

- C h Chapel row, South Lambeth
 F d Chapel row, Whitechapel road
 B f Chapel street, Belgrave square
 F e Chapel street, Catherine street
 E c Chapel street, Curtain road
 B c Chapel street, Edgeware road
 D c Chapel street, Lamb's-conduit street
 B e Chapel street, Park lane
 D b Chapel street, Penton street
 C b Chapel street, Somers town
 E d Chapel street, White-Cross row
 B e Chapel street, East, Curzon street
 C f Chapel street, Great, Orchard street
 C f Chapel street, Little, Orchard street
 B f Chapel street, West, Belgrave square
 F e Chapman street, Cannon street
 D a Chapman street, Islington
 F e Chapman street, Lower, Catherine st.
 F e Chapman street, Upper Cannon st.
 C g Chapter street, Vauxhall-bridge road
 C e Charing cross, Strand
 C e Charles court, Strand
 E c Charles place, Charles square
 B c Charles row, Lisson grove
 E c Charles square, Old-street road
 F e Charles street, Back lane
 B c Charles street, Barrow-hill road
 F c Charles street, Bethnal-green road
 F d Charles street, Church street
 D f Charles street, Coleman street
 F e Charles street, Commercial road
 D d Charles street, Covent garden
 E c Charles street, Curtain road
 B e Charles street, Curzon street
 B c Charles street, Devonshire street
 D d Charles street, Drury lane
 G c Charles street, Globe street
 E b Charles street, Goswell road
 D f Charles street, Great Surrey street
 B e Charles street, Grosvenor square
 F b Charles street, Hackney road
 C b Charles street, Hampstead road
 D d Charles street, Hatton Garden
 A f Charles street, Kensington
 B f Charles street, Knightsbridge
 C d Charles street, Long Acre
 B c Charles street, Manchester street
 C d Charles street, Middlesex hospital
 E g Charles street, New Kent road
 D c Charles street, Northampton square
 C f Charles street, Parliament street
 C c Charles street, St. James's square
 C b Charles street, Seymour street
 C d Charles street, Soho square
 C f Charles street, Stafford row
 E h Charles street, Walworth
 D f Charles street, Waterloo road
 D f Charles street, Westminster road
 C b Charles street, East, Hampstead
 C d Charles street, Little, Soho square
 F g Charlotte place, Vauxhall road
 F g Charlotte row, Albion street
 D b Charlotte row, St. John's street rd.
 E h Charlotte row, Walworth
 C d Charlotte street, Bedford square
 D a Charlotte street, Copenhagen street
 D f Charlotte street, Great Surrey street
 F c Charlotte street, Hart's lane, Bethnal-green road
 F d Charlotte street, New road
 E c Charlotte street, Old-street road
 D a Charlotte street, Pentonville
 C c Charlotte street, Portland road
 D b Charlotte street, West, Battle-bridge
 D a Charlotte street, West, Didding place
 D b Charlton crescent, Broadway
 C c Charlton street, Cleveland street
 C c Charlton street, Great, Fitzroy square
 D c Charter-house, Goswell street
 D d Charter-house lane, John street
 D d Charter-house square, Aldersgate st.
 D d Charter-house st. Charter-house sq.
 D e Chatham place, Bridge street
 E g Chatham place, New Kent road
 E d Chatham street, Goswell street
 G h Chatsworth buildings, Grove lane
 E d Cheapside
 E c Chequer alley, Bunhill row
 B g Chelsea bridge, Grosvenor canal
 B h Chelsea Hospital
 B h Chelsea Water-works, Commercial rd.
 C c Chenies mews, Tottenham court rd.
 C c Chenies st. Upper, Tottenham ct. rd.
 F c Cherrington row, Bethnal green road
 F f Cherry-garden stairs, Rotherhithe st.
 F g Cherry-garden street, Rotherhithe st.
 E c Cherry-tree alley, Bunhill row
 B f Chesham street, Eaton place
 F c Cheshire street, Bethnal-green road
 B f Chester mews, Pimlico
 G c Chester place, Green st. Bethnal green
 A d Chester place, Hyde-park square
 D h Chester place, Kennington cross
 E h Chester place, Kent road
 B g Chester square, Pimlico
 B f Chester street, Grosvenor place
 D h Chester street, Kennington lane
 B g Chester terrace, Chester square
 C b Chester terrace, Regent's park
 B c Chesterfield court, High street
 B e Chesterfield house, South-Audley st.
 B e Chesterfield street, Curzon street
 D b Chesterfield street, New road
 B c Chesterfield street, Weymouth st.
 A h Cheyne row, Great, Cheyne walk
 A h Cheyne row, Little Cheyne walk
 A h Cheyne walk, Chelsea
 D b Chichester place, Cumberland row
 F d Chicksand street, high street
 F e Chigwell street, Ratcliff Highway
 G g China-hall place, Deptford Lower rd.
 D g China buildings, Lambeth row
 D g China row, Lambeth row
 D g China terrace, Walcot place
 E d Chiswell street, Finsbury square
 F e Christian street, New road
 E d Christopher alley, Finsbury square
 D c Christopher street, Hatton wall
 D d Christ's Hospital, Newgate street
 E f Church lane, Borough
 G e Church lane, Commercial road
 A e Church lane, High street
 F e Church lane, Rosemary lane
 F d Church lane, Whitechapel
 D a Church Mis. Inst. Up. st. Islington
 F e Church row, Back lane, Up. Shadwell
 F c Church row, Bethnal-green road
 D g Church row, High street, Newington
 C b Church row, Pancras place
 G d Church row, Stepney
 F f Church stairs, Rotherhithe street
 E f Church street, Borough

- F c Church street, Brick lane
 C d Church street, Broad street
 C d Church street, Dean street
 D g Church street, Fore street
 E f Church street, Great Russell street
 D f Church street, Great Surrey street
 C g Church street, Millbank street
 F e Church street, Minories
 A c Church street, Paddington
 F f Church street, Rotherhithe street
 D a Church street, Upper st. Islington
 D f Church street, Waterloo road
 F d Church street, Whitechapel road
 A c Church street, New, Edgeware road
 E d Churchyard, Bishopsgate
 B c Churchyard, Paddington street
 G d Churchyard, Stepney
 F d Churchyard alley, Fenchurch st.
 D d Churchyard court, Fetter lane
 D g Churchyard row, High street
 C a Churchyard row, Pancras
 C g Churton street, Vauxhall-Bridge rd.
 F f Cinnamon street, Old Gravel lane
 E e Circus, Minories
 B c Circus street, New Road
 C c Cirencester place, Great Titchfield st.
 E b City Gardens, City road
 E b City-gardens' row, City road
 D e City Gas-works
 E e City Lying-in-Hospital, City road
 E b City road, Goswell wall
 E b City-road lock, Regent's canal
 E d City School, Milk street
 E d City Theatre, Milton street
 E h Clandon street, Portland street
 D d Clare market, Lincoln's-inn fields
 D d Clare street, Clare market
 F b Clare street, Hackney road
 E g Claremont cottages, Grange road
 E h Claremont place, Kent road
 D b Claremont square, Middleton square
 D b Claremont terrace, Middleton square
 F g Claremont place, Deptford Lower rd.
 C b Clarence gardens, Munster street, Regent's park
 C b Clarence place, Pancras place
 D b Clarence place, Pentonville
 F c Clarence row, Hackney road
 C b Clarence street, Albany street
 F f Clarence street, Rotherhithe street
 G g Clarence st. Upper, Rotherhithe st.
 B b Clarence terrace, Regent's park
 A d Clarendon place, Hyde park
 C b Clarendon square, Somers town
 C b Clarendon street, Clarendon square
 C b Clarendon st. Little Clarendon sq.
 B e Clarges street, Piccadilly
 B e Clarges street, Little, Curzon street
 F g Clark's orchard, Rotherhithe street
 D c Clark's place, Old road
 F d Clark street, Commercial road
 B e Clay street, Dorset street
 D h Clayton place, Newington
 D h Clayton street, Kennington green
 D h Cleaver street, Princes square
 D d Clement's Inn, Pickett street
 E e Clement's lane, Lombard street
 D d Clement's lane, Pickett street
 B a Clergy Orphan school, Wellington rd.
 D c Clerkenwell close, Clerkenwell
 D c Clerkenwell green, St. John's street
 D c Clerkenwell new prison, Coppice row
 C c Cleveland street, Mile-end road
 F d Cleveland street, New road
 E h Cleveland street, Walworth
 E h Clifford street, Walworth common
 E b Clift street, New North road
 F b Clifton place, Cambridge heath
 E d Clifton street, Finsbury square
 E f Clink street, High street, Borough
 C c Clipstone street, Portland road
 E e Cloak lane, Queen street
 D d Cloth fair, West Smithfield
 D a Cloudesley square, Islington
 D a Cloudesley street, Islington
 D a Cloudesley terrace, Islington
 F c Club row, Church street
 C h Clun terrace, New road
 E e Coal-harbour stairs
 F b Coal-harbour street, Hackney road
 C d Coal-yard, High Holborn
 D e Cobham row, Cold-Bath square
 G c Coborn road, Bow road
 G c Coborn street, Bow road
 A d Coburg place, Black-lion road
 E h Coburg road, Old Kent road
 C g Coburg row, Vauxhall-bridge road
 F g Coburg street, Deptford Lower road
 C b Coburg street, Drummond street
 D f Coburg Theatre, Waterloo road
 B a Cochrane terrace, Wellington road
 D d Cock court, Ludgate street
 G e Cock hill, Upper Shadwell
 E c Cock lane, Church street
 B g Cock lane, Giltspur st. W. Smithfield
 D d Cock lane, Snowhill
 D d Cockpit court, Drury lane
 C e Cocks spur street, Pall mall
 E b Coffee-house walk, Hoxton
 F d Colechester street, Church lane
 D c Cold-Bath square, Coppice row
 D b Colebrook row, New River
 E c Coleman street, Bunhill row
 F f Coleman street, King's road
 D f Coleman street, Lambeth street
 E g Cole's place, Great Dover street
 E g Cole's street, Great Dover street
 B g Coleshill street, Eaton square
 C b Coliseum, Regent's park
 D f Collate street, Westminster road
 C f College gardens, College street
 E e College hill, Upper Thames street
 B f College place, Blackland's lane
 C a College place, King's street
 C f College st. Abingdon st. Westminster
 D f College street, Belvidere road
 A g College street, Leader street
 E f College street, Tooley street
 C a College street, Great, Camden town
 C a College street, Little, Camden town
 A g College st. Little, Marlborough sq.
 E f Collier's street, Borough
 D f Collingwood street, Great Surrey st.
 F d Collingwood street, Norfolk street
 E f Collingwood street, Wellington st.
 D b Collyer street, Pentonville
 E h Colonnade, Albany road
 C e Colonnade, Russell square
 H e Colquhoun place, West-India docks
 C e Colvil court, Tottenham-court road
 E e Commercial chambers, Minories
 G e Commercial road, Limehouse

- B h Commercial road, Queen street
 D e Commercial road, Waterloo road
 G e Commercial terrace, Commercial rd.
 C h Common sewer, Millbank
 E e Compton lane, Upper Thames street
 C e Compton street, Marchmont street
 D e Compton street, St. John street
 C d Compton street, Little, Wardour st.
 C d Compton street, New, Broad street
 C d Compton street, Old, Wardour street
 C d Conduit court, Long-acre
 A h Conduit grove, King's road
 C d Conduit street, New Bond street
 A d Conduit street, Spring street
 B d Connaught mews, Edgeware road
 B d Connaught place, Edgeware road
 B d Connaught square, Edgeware road
 B c Connaught terrace, Edgeware road
 E b Constable street, Hoxton
 B f Constitution hill, Green park
 B b Constitution row, Gray's-Inn lane
 D d Cook's court, Carey street
 A h Cook's ground, King's parade
 C a Cook's row, Fig lane
 E e Cooper's row, Tower hill
 C g Copeland's yard, Holywell street
 G e Copenhagen place, Salmon lane
 D a Copenhagen street, Pentonville
 C c Coram street, Great, Buinswick sq.
 C c Coram street, Little, Russell square
 F h Corbet's lane
 C e Cork street, Clifford street
 B b Cornwall mews
 D e Cornwall place, Waterloo road
 D f Cornwall road, New Cut
 D e Cornwall street, Commercial road
 F e Cornwall street, New road
 B b Cornwall terrace, Regent's park
 D e Corporation row, St. John street rd.
 G c Cottage grove, Bow road
 F e Cottage lane, Commercial road
 F g Cottage row, Bermondsey
 E f Counter lane, Wellington street
 E f County gaol, Borough road
 E g County-terrace st. New Kent road
 E g County terrace, New Kent road
 F d Court street, Whitechapel road
 C e Covent Garden, Long acre
 C d Covent-garden Theatre, Bow street
 C e Covent-gar. workhouse, Cleveland st.
 E g Coventry place, Grange road
 F c Coventry street, Bethnal-green road
 C e Coventry street, Piccadilly
 D d Cow cross, West Smithfield
 C f Cowley street, College street
 E d Cox's square, Petticoat lane
 F c Crabtree row, Hackney road
 C e Cranbourne street, Leicester square
 E e Crane lane, Upper Thames street
 E e Craven place, Strand
 A d Craven cottages, Bayswater
 A d Craven-hill, Bayswater
 A d Craven-hill lane, Bayswater
 A d Craven place, Lower, Black-Lion lane
 A d Craven place, Upper, Black-Lion lane
 D e Crawford place, Coppice row
 B e Crawford street, Gloucester place
 D d Creed lane, Ludgate street
 E h Crescent, Albany road
 C e Crescent, North, Tottenham-court rd.
 C e Crescent, South, Tottenham-court rd.
 F b Crescent court, Cambridge heath
 D e Crescent place, Bridge street
 C d Crescent place, Camden town
 F c Crescent place, Hackney road
 C b Crescent street, George street
 F b Crescent street, Hackney road
 E d Crescent street, Jawn street
 E g Crimscoot street, Grange road
 E d Crispin street, Union street
 E b Critchell place, New North road
 D b Cromer street, Gray's-Inn road
 A b Crompton place, Maida vale
 A g Cromwell cottage, Brompton
 A f Cromwell row, Gloucester square
 E f Crosby row, Snow's fields
 E h Crosby row, Walworth
 D f Crosier street, Lambeth
 D f Cross court, New cut
 C h Cross lane, Grosvenor road
 C d Cross lane, Long acre
 E f Cross lane, Shad Thames
 G d Cross row, Stepney green
 F e Cross street, Back lane
 F e Cross street, Belvidere place
 E g Cross street, Grange road
 D f Cross street, Great Surrey street
 G c Cross street, Green street
 D c Cross street, Hatton garden
 D g Cross street, Newington
 E a Cross street, Upper street
 E b Cross street, Wenlock road
 A d Crown, The, Bayswater
 D e Crown court, Belvidere road
 C d Crown court, Brewer street
 D d Crown court, Drury lane
 C e Crown court, Pall-mall
 F g Crown place, Grange road
 G d Crown row, Mile-end road
 D g Crown row, Walworth
 E d Crown street, Finsbury square
 E c Crown street, Hoxton square
 C f Crown street, King street
 C d Crown street, Oxford street
 B c Croydon street, Upper, Dorset street
 E f Crucifix lane, Bermondsey street
 E e Crutched Friars, Leadenhall street
 E e Cullum street, Fenchurch street
 B d Cumberland gate, Hyde park
 C b Cumberland market, Albany street
 C b Cumberland place, Regent's park
 F d Cumberland place, North street
 D h Cumberland row, Kennington green
 D b Cumberland row, New road
 B d Cumberland street, Bryanstone sq.
 C b Cumberland st., Cumberland market
 F c Cumberland street, Curtain road
 F b Cumberland street, Hackney road
 A g Cumberland street, Marlborough st.
 C c Cumberland street, Middlesex hosp.
 B d Cumberland street, Oxford street
 D b Cumberland terrace, Pentonville
 C b Cumberland terrace, Regent's park
 D b Cumming street, Clarence place
 D d Cursitor street, Chancery lane
 E e Custom house, Lower Thames street
 E e Custom-house stairs, Custom house
 A a Cuthbert street, Maida vale
 E d Cutler street, Houndsditch
 C f Dacre street, Great Chapel street
 D b Dalby terrace, City road
 G e Dalglish place, Commercial road

- G e Dagleish street, Commercial road
 C h Darlington place, New road
 C f Dartmouth row, Princes street
 C f Dartmouth street, Broadway
 B c David street, York place
 E g Deaf-and-Dumb Asylum, Kent road
 F d Deal street, Church street
 E h Dean's buildings, North street
 F d Dean street, Brick lane
 F e Dean street, Commercial road
 D d Dean street, Fetter lane
 E d Dean street, Finsbury square
 E b Dean street, New North road
 C f Dean street, Orchard street
 C d Dean street, Oxford street
 B c Dean street, Park lane
 B c Dean street, Stafford street
 E f Dean street, Tooley street
 G e Dean street, Upper Shadwell
 C d Dean street, Little, Dean street
 C f Dean's yard, Orchard street
 A c Deer Found, Hyde park
 F d Dempsey street, Charles street
 C g Denbigh street, Warwick street
 C d Denmark street, Crown street
 F e Denmark street, Ratcliff highway
 C b Denton street, Brewer street
 D d Denzell street, Clare market
 F g Deptford Lower road
 G g Deptford road, Greenland docks
 H g Deptford & Greenwich rd., I. of Dogs
 A d Derby place, Bayswater
 E a Derby road, Kingsland road
 D b Derby street, Liverpool street
 B c Derby street, Piccadilly
 E c Derbyshire street, Bethnal-green rd.
 E g Deverell street, Great Dover street
 A d Devonport news, Bayswater
 G e Devonport st. Commercial road East
 A d Devonport st. Grand Junction street
 C e Devonshire house, Piccadilly
 B c Devonshire mews, Weymouth street
 H d Devonshire place, Prospect place
 B c Devonshire place, Devonshire street
 D h Devonshire place, Vauxhall road
 G d Devonshire place, World's End
 E d Devonshire street, Bishopsgate street
 B c Devonshire street, Earl street
 G c Devonshire street, Globe lane
 B c Devonshire st. Lisson-grove North
 D c Devonshire street, Portland road
 D c Devonshire street, Queen square
 G c Devonshire street, Upper, Globe lane
 D h Diamond row, Kennington road
 C c Diana place, New road
 D a Diddington place, Regent's canal
 G c Digby row, Digby street
 G c Digby street, Globe lane
 C c Diorama, Park square
 D e Dirty lane, Strand
 E e Distaff lane, Friday street
 D b Dobney's place, White-lion street
 D h Dobson terrace, Walworth
 F f Dockhead, Horsleydown
 F e Dock street, Commercial road
 F e Dock street, Rosemary lane
 F e Dodd's place, Dog row
 D h Doddington grove, Kennington
 F d Dog row, Mile-end road
 E f Dog-and-bear yard, Tooley street
 G g Dog-and-duck stairs, Greenland docks
 F h Doncaster place, Kent road
 B e Dorchester house, Park lane
 B b Dorchester place, Blandford square
 E b Dorchester street, New North road
 C h Dorling place, New road
 D c Dorrington street, Coppice row
 D d Dorrington street, Leather lane
 B b Dorset place, Dorset square
 C e Dorset square, Pall-mall East
 C a Dorset place, Pancras
 B c Dorset square, Milton street
 E d Dorset street, Crispin street
 D e Dorset street, Fleet street
 B c Dorset street, Gloucester place
 C g Dorset street, Vauxhall-bridge road
 D c Doughty street, Mecklenburgh sq.
 C g Douglas street, Vincent square
 F b Dove row, Margaret place
 E g Dover place, New Kent road
 E h Dover place, Kent road
 C e Dover street, Piccadilly
 E g Dover street, Great, Borough
 E e Dowgate hill, Upper Thames street
 E e Dowgate wharf, Upper Thames st.
 B c Down street, Piccadilly
 E a Downham road, Kingsland road
 C f Downing street, Whitehall
 B f D'Oyley street, Sloane terrace
 D d Drake street, Theobald's road
 F d Drapers' almshouses, Dog row
 F b Drapers' almshouses, Hoxton
 C b Drapers' place, Burton crescent
 B g Draycote place, Sloane square
 C b Drummond crescent, Seymour street
 C b Drummond street, Seymour street
 D d Drury lane, Broad street
 D d Drury lane, Little, Strand
 D d Drury-lane theatre, Drury lane
 E e Duck's-foot lane, Upper Thames st.
 G d Duckett street, Mile-end road
 F d Ducking-pond row, Whitechapel rd.
 F d Ducrow's Olympic Circle, Whitech.
 A c Dudley grove, Bishop's road
 A c Dudley street, North-wharf road
 C e Duke of York's column, Pall-mall
 C e Duke's court, St. Martin's lane
 C b Duke's row, New road
 D e Duke street, Broad wall
 F e Duke street, Commercial road
 C f Duke street, Great George street
 C d Duke street, Great Russell street
 D d Duke street, Lincoln's-inn fields
 B d Duke street, Manchester square
 E f Duke street, Mint street
 F d Duke street, North street
 B d Duke street, Oxford street
 C e Duke street, Piccadilly
 C e Duke street, St. Martin's lane
 C b Duke street, Seymour street
 F e Duke street, Turk street
 E d Duke street, Union street
 D f Duke street, Westminster road
 D d Duke street, West Smithfield
 D b Duncan place, City road
 F b Duncan place, Mutton lane
 F e Duncan street, Whitechapel High st.
 D b Duncan terrace, Duncan place
 C e Duncannon street, Strand
 F d Dunk street, Church street
 E d Dunning's alley, Bishopsgate
 E a Dunston street, Kingsland road

- B h Durham grove, Paradise row
 B h Durham place, Chelsea hospital
 D f Durham place, Lambeth
 F b Durham place, East, Hackney road
 F b Durham place, West, Hackney road
 F b Durham street, Hackney road
 C h Durham street, Vauxhall road
 B c Durweston street, Crawford street
 C c Duchess street, Portland place
 D b Dutton street, Cromer street
 D f Dyer street, Gravel lane
 D d Dyer's buildings, Holborn hill
 D d Eagle street, High Holborn
 C e Eagle street, Piccadilly
 A g Earl's court, Brompton
 A g Earl's court-house, Earl's court
 D c Earl street, Blackfriars
 C a Earl street, Camden town
 A c Earl street, Edgeware road
 C g Earl street, Wilton street
 C d Earl street, Great, Seven Dials
 C d Earl street, Little, Seven Dials
 G a Eastfield street, Old road
 E e East Cheap, Great and Little, Grace-church street
 D d East-Harding street, Great New st.
 H e East-India-Dock row
 F g East lane, Neckinger road
 F f East-lane stairs
 E c East lane, East row
 G d East-London cemetery, Stepney
 E c East row, City road
 F e East Smithfield, Upper
 B c East street, Baker street
 F b East street, Goldsmith's terrace
 G c East street, Green street
 E b East street, Hoxton road
 E h East street, Kent road
 D c East street, Lamb's-conduit street
 D g East street, Walcot place
 D g East street, West square
 D c Easton street, Exmouth street
 E h Eastman's place, Kent road
 B f Eaton lane, Pimlico
 B f Eaton place, Eaton square
 B g Eaton square, King's road
 B f Eaton street, Upper, Victoria road
 B f Eaton street, Victoria road
 D h Ebenezer place, Kennington lane
 B g Eccleston square, Pimlico
 B g Eccleston street, Victoria road
 B f Eccleston street, Upper, Belgrave sq.
 C c Eden street, Tottenham-court road
 B d Edgeware road
 F c Edith gardens, Bird-cage walk
 D b Edmond street, Maiden lane
 E a Edward place, Hertford road
 G d Edward street, Alfred street
 F c Edward street, Church street
 C b Edward street, Cumberland market
 B b Edward street, Dorset square
 D f Edward street, Great Surrey street
 D h Edward street, Kennington cross
 C b Edward street, Mary street
 G d Edward street, North street
 B d Edward street, Portman square
 C g Edward street, Vauxhall bridge
 E b Edward street, Wenlock basin
 C b Edward st. Little, Cumberland market
 D a Edward's terrace, Pentonville
 F h Egmont place, Kent road
 D b Egremont place, New road
 E e Elbow lane, Upper, Thames street
 E d Elder street, Norton Falgate
 E g Eldon place, Grange road
 E d Eldon street, Finsbury circus
 D g Elephant and Castle, New Kent road
 F g Elephant lane, Elephant stairs
 E f Elephant stairs, Rotherhithe
 E g Elm street, Long lane
 F e Elizabeth street, Cable street
 B g Elizabeth street, Eaton square
 F c Elizabeth street, Hackney road
 D a Elizabeth terrace, Islington
 F e Ellen street, Church lane
 D g Elliott's row, St. George's road
 B g Ellis street, Sloane street
 C a Elm lodge, King's road
 G e Elm row, Sun-tavern fields
 A d Elms lane, Bayswater
 D g Elm street, Gray's-inn lane
 A c Elm-tree road, Portland town
 G c Ely place, Globe street
 D g Ely place, Holborn hill
 D g Ely place, West square
 C f Emanuel college
 E e Emerson street, Southwark bridge
 G d Emily street, Mile-end road
 C c Endsleigh street, Euston square
 B e Engine street, Piccadilly
 C h Erin place, Millbank
 C b Ernest st. Albany st. Regent's park
 G d Ernest street, Mile-end road
 C g Esher st. Holywell st. Westminster
 F g Essex place, Regent's canal
 G c Essex place, Mile-end road
 D e Essex stairs
 D b Essex street, Maiden lane
 G c Essex street, Globe street
 D f Essex street, Gravel lane
 E b Essex street, Kingsland road
 F d Essex street, New road
 D e Essex street, Strand
 F d Essex street, Whitechapel High st.
 C b Euston crescent & grove, Euston sq.
 C c Euston place, Euston square
 C b Euston square, New road
 F e Everard street, Church lane
 C c Everett street, Bernard street
 E h Ewhurst street, Trafalgar street
 G c Ewing's buildings, Mile-end road
 F f Execution dock, Wapping
 B f Exeter place, Queen street
 D e Exeter street, Catherine street
 B a Exeter street, New Church street
 B f Exeter street, Sloane street
 B a Exeter street, Little, Lisson grove
 F a Exmouth place, Mare street
 F c Exmouth street, Commercial road
 D c Exmouth street, Coppice row
 C b Exmouth street, Euston square
 A a Eyre arms, Wellington road
 D c Eyre street, Leather lane
 E f Fair street, Tooley street
 E f Falcon court, Borough
 D e Falcon stairs, Bankside
 E d Falcon street, Aldersgate street
 D d Farringdon market, Shoe lane
 B e Farm street, Hill street
 F e Farmer street, Upper Shadwell
 F d Fashion street, Brick lane
 A h Feather stairs, Cheyne walk

- G e Featherstone buildings, Limehouse
 E c Featherstone street, City road
 D a Felix place, Islington
 D f Felix street, Bridge road
 F b Felix street, Hackney road
 D a Felix terrace, Islington
 E d Fell street, Wood street
 E e Fenchurch street, Leadenhall street
 F e Fenton street, Commercial road
 C g Ferry street, Fox street
 D d Fetter lane, Fleet street
 D d Field lane, Holborn bridge
 D h Field place, Walworth
 D b Field street, Hamilton place
 F d Fieldgate street, Whitechapel road
 C a Fig lane, Hampstead road
 E e Finch lane, Cornhill
 F d Finch street, Brick lane
 E d Finsbury circus, London wall
 E d Finsbury place, Finsbury square
 E d Finsbury square, Artillery-ground
 E d Finsbury street, Chiswell street
 E d Fireball street, Houndsditch
 E e Fish-street hill, Lower Thames street
 D e Fisher's alley, Water lane
 D d Fisher street, Red-lion square
 E f Fishmonger's alley, St. Margaret's ct.
 C c Fitzroy place, New road
 C c Fitzroy square, Cleveland street
 C c Fitzroy street, Fitzroy square
 E e Five-field lane, Upper Thames street
 D d Fleet lane, Faringdon street
 D d Fleet prison, Faringdon street
 F c Fleet street, Brick lane
 D d Fleet street, Chancery lane
 E h Flint street, East street
 D f Flint street, Friar street
 E d Flower court, Blossom street
 E d Flower street, Brick lane
 C f Fludyer street, Parliament street
 C c Foley place, Great Portland street
 C c Foley street, Portland street
 C g Fore street, Church street
 G e Fore street, Three-colt street
 E d Fore street, Wood street
 E g Fort place, Grange road
 D g Fort place, West square
 E d Fort street, Union street
 E d Foster lane, Cheapside
 F d Foster street, Dog row
 D c Foundling hospital, Guildford street
 D c Foundling terrace, Gray's-inn road
 E c Fountain row, City road
 F f Fountain stairs, Bermondsey
 E f Fox buildings, Kent street
 D d Fox court, Gray's-inn lane
 F e Fox lane, Upper Shadwell
 F b Frame-knitters' almshouses, Hoxton
 C g Francis street, Bridewell
 E b Francis street, Canal road
 D a Francis street, Charlotte street
 A g Francis street, College street
 D h Francis street, Newington
 E g Francis street, Old street
 C c Francis street, Tottenham-court road
 D f Francis street, Waterloo road
 D f Francis street, Westminster road
 D h Frederick place, Francis street
 D b Frederick place, Frederick street
 E a Frederick place, Hertford road
 G c Frederick place, Mile-end road
 C b Frederick street, Albany street
 B b Frederick street, Frederick place
 D b Frederick street, Gray's-inn lane
 D g Frederick street, London road
 B a Frederick street, Portland town
 C g Frederick street, Regent street
 E f Freeman's lane, Shad Thames
 D f Freemasons' school, Westminster rd.
 E c French alley, Goswell street
 E e Friday street, Cheapside
 C d Frith street, Soho square
 E b Frog lane, Regent's canal
 E b Frog-lane bridge, Regent's canal
 E d Frying-pan alley, Petticoat lane
 F f Frying-pan stairs, Wapping
 G d Fuller's almshouses, Mile end
 F c Fuller street, Thomas street
 D d Fulwood's rents, Holborn
 C g Fyne's street, Vincent square
 D a Gainsford place, Thornhill lane
 E f Gainsford street, Horsleydown
 F h Galley wall, Corbet's lane
 E b Gamson buildings, Kingsland road
 C f Garden lane, York street
 B g Garden row, Chelsea hospital
 F c Garden row, Virginia street
 G d Garden street, Stepney green
 C g Garden street, Vauxhall bridge
 F d Garden street, Great, Whitechapel rd.
 C g Garden st. Upper, Vauxhall-bridgerd.
 C h Garden terrace, Millbank
 C f Gardiner's lane, King street
 H f Garford street, West-India docks
 E e Garlick hill, Upper Thames street
 F c Gascoigne place, Castle street
 E c Gas works, Goswell road
 C h Gas works, Millbank
 C a Gas works, St. Pancras
 D d Gate street, Lincoln's-inn fields
 D g Gaywood street, London road
 E g Godding street, Dockhead
 D b Gee street, Britannia street
 E e Gee street, Goswell-street road
 E d Gee street, Long alley
 C b Gee street, Seymour street
 D c George court, St. John's street
 G b George place, Globe town
 G d George place, Wellington place
 E g George place, Salisbury place
 E c George row, City road
 E e George row, Mansion-house street
 F g George's row, Bermondsey wall
 F f George stairs, Shad Thames
 G h George stairs, Grove street
 G h George street, Grove street
 F c George street, Bethnal-green road
 C d George street, Broad street
 G d George street, Catherine street
 G e George street, Commercial road
 B c George street, Devonshire street
 B d George street, Edgeware road
 C c George street, Foley street
 B c George street, Gloucester street
 C d George street, Great Russell street
 D f George street, Great Suffolk street
 D f George street, Great Surrey street
 B g George street, Grosvenor row
 B d George street, Grosvenor square
 C b George street, Hampstead road
 C d George street, Hanover square
 F d George street, High street

- C f George street, James street
 F a George street, London fields
 G d George street, Mile-end road
 E e George street, Minories
 D b George street, Old road
 C f George street, Palace street
 C e George street, St. James's square
 B g George street, Sloane square
 E e George street, Trinity square
 E b George street, Union road
 C h George street, Vauxhall walk
 E h George street, Walworth
 G d George street, Wellington place
 F d George street, Wentworth street
 E f George street, Great, Bridge street
 E g George street, Great, Neckinger rd.
 B g George street, Little, Grosvenor brdg.
 C b George street, Little, Hampstead
 B f George street, Little, Sloane terrace
 C f George street, Little, Westminster
 E e George yard, Cornhill
 B d George yard, Grosvenor square
 C f George yard, King street
 F d George yard, Whitechapel
 C c Georgiana street, Euston square
 C d Gerrard street, Soho square
 F c Gibraltar, Garden row
 D g Gibraltar row, St. George's road
 D f Gibson street, Waterloo road
 E b Gifford street, Kingsland road
 C d Gilbert street, Museum
 B d Gilbert street, Oxford street
 H e Gill street, Commercial road
 B g Gillingham street, Belgrave road
 C g Gillingham street, Vincent square
 D d Giltspur street, West Smithfield
 G b Globe house, Old Ford road
 G c Globe lane, Mile-end road
 G c Globe place, Globe street
 G c Globe street, Globe lane
 F f Globe street, Hermitage street
 G b Globe town
 F b Gloucester buildings, Hoxton road
 C a Gloucester gate, Regent's park
 A f Gloucester grove, West
 B e Gloucester house, Park lane
 A g Gloucester Lodge, Gloucester grove
 B c Gloucester mews, North, Dorset sq.
 C a Gloucester place, Fig lane
 F h Gloucester place, Greenwich road
 F b Gloucester place, Hackney road
 D a Gloucester place, Kent road
 B c Gloucester place, New road
 E g Gloucester place, Prospect place
 E c Gloucester row, Curtain road
 E b Gloucester row, Hoxton road
 E g Gloucester row, Prospect place
 A d Gloucester square, Uxbridge road
 F b Gloucester street, Cambridge road
 F d Gloucester street, Charlotte street
 F b Gloucester street, Hackney road
 E b Gloucester street, Hoxton road
 D c Gloucester street, Middleton street
 D f Gloucester street, Oakley street
 B d Gloucester street, Portman square
 D c Gloucester street, Queen square
 F b Gloucester street, St. Margaret street
 E b Gloucester st. New Gloucester terrace
 B c Gloucester street, Upper Dorset sq.
 A g Gloucester terrace, Brompton
 E b Gloucester terrace, Hoxton road
 C a Gloucester terrace, Regent's park
 C g Gloucester terrace, Vauxhall brdg. rd.
 E c Goat stairs, Bankside
 E f Goat street, Horsleydown
 A g Godfrey street, Britham street
 G e Godwell stairs, Narrow street
 G d Gold street, Stepney green
 E c Golden lane, Old street
 C d Golden square, Regent street
 G e Golden street, Upper Shadwell
 D h Goldin's place, Market street
 F b Goldsmith's almshouses, Hackney rd.
 F b Goldsmith's place, Hackney road
 E d Goldsmith's street, Gutter lane
 F b Goldsmith's terrace, Hackney fields
 F g Goldworthy place, Rotherhithe
 F g Goldworthy terrace, Lr. Deptford st.
 D d Golson's court, Drury lane
 C e Goojde street, Tottenham court rd.
 F e Goodman's fields
 F b Goodman's gardens, Middlesex place
 F e Goodman's yard, Minories
 C c Gordon place, Gordon square
 C c Gordon square, Woburn square
 C c Gordon street, Euston square
 A f Gore lane, Brompton
 E b Goswell road, Goswell street
 E c Goswell street, Aldersgate street
 D b Goswell terrace, Goswell road
 D d Gough square, Fleet street
 D c Gough st. Elm street, Gray's-inn rd.
 D a Goulden terrace, Pentonville
 F d Goulston street, Whitechapel
 C a Gower mews, Bedford square
 C c Gower place, Gower street
 C c Gower street, Bedford square
 C c Gower street, North, Euston place
 C c Gower street, Upper
 F e Gower's walk, Church lane
 F e Grace's alley, Welliclose square
 E e Gracechurch street
 C c Grafton street, Cleveland street
 C a Grafton street, Gerrard street
 C c Grafton street, Old Bond street
 C c Grafton street, East, Tottenham ct. rd.
 B g Graham street, Coleshill street
 F c Granby street, Church street
 C b Granby street, Hampstead road
 D f Granby street, Waterloo road
 F c Granby terrace, Church street
 A d Grand-Junction street, Paddington
 A f Grange, The, Bermondsey
 E g Grange, The, Grange road
 F d Grange court, New road
 E g Grange road, Bermondsey New road
 E h Grange road, Kent road
 F c Grange street, Church street
 E g Grange walk, Bermondsey
 E b Grange walk, Gloucester terrace
 F a Grange's Nursery, Kingsland road
 B e Grantham row, Park lane
 E d Gravel lane, Bishopgate
 F f Gravel lane, Great Guildford street
 D f Gravel lane, Old, Wapping
 B e Gray's buildings, Duke street
 D c Gray's Inn
 D c Gray's-Inn garden, Gray's-Inn lane
 D c Gray's-Inn lane, Holborn
 D c Gray's-Inn lane, Little
 B d Gray street, Duke street
 D g Gray's walk, Lambeth walk

- E g Great Bland street, Gt. Dover st.
 E d Great St. Helen's, Bishopgate
 C d Greek street, Soho square
 E a Green, The, Lower road
 A c Green, The, Harrow road
 A b Green, The, Maida vale
 F f Green bank, Wapping
 D f Green lane, Great Surrey street
 A g Green lane, Marlborough street
 C c Green park
 G c Green place, Green street
 D f Green's buildings, Lambeth marsh
 D f Green street, Bear lane
 G c Green street, Bethnal green
 D f Green street, Borough road
 C a Green street, Camden town
 G c Green street, Globe lane
 C e Green street, Leicester square
 D h Green street, New st. Kennington rd.
 B d Green street, North Audley stree.
 D c Green street, Theobald's road
 F e Green street, Upper Thames street
 G d Green street, Wellington street
 F d Green street, Whitechapel road
 D c Green terrace, St. John's-street road
 D e Green walk, Great Surrey street
 D f Green walk, Wellington street
 F d Greenfield street, White-horse street
 D d Greenhill's rents, West Smithfield
 G f Greenland stairs, Trinity street
 H i Greenwich
 H i Greenwich hospital
 I i Greenwich park
 D g Greenwich street, Southwark bridge
 G e Grenada terrace, Commercial road
 D c Grenville street, Brunswick square
 C b Grenville street, Clarendon street
 E h Grenville terrace, Old Kent road
 C d Grosse street, Rathbone place
 D d Greville street, Leather lane
 F d Grey-Eagle street, Quaker street
 C g Grey-coat place, Horseferry road
 C g Grey-coat school, Horseferry road
 C g Grey-coat street, Vincent square
 G e Griffin street, Upper Shadwell
 E f Griffith's rents, Bermondsey street
 B g Grosvenor bridge, King's road
 B d Grosvenor gate, Hyde park
 B d Grosvenor mews, Davis street
 G c Grosvenor place, Back lane
 B f Grosvenor place, Hyde-park corner
 B f Grosvenor place, Lower Grosvenor pl.
 C g Grosvenor road, Pimlico
 B g Grosvenor row, Wilderness row
 B d Grosvenor square, North Audley st.
 G e Grosvenor street, Commercial road
 C g Grosvenor street, Eccleston square
 B d Grosvenor street, Grosvenor square
 B d Grosvenor st. Little, Grosvenor street
 B d Grosvenor street, Upper, Park lane
 B f Grosvenor street, West, Eaton square
 D e Ground street, Upper, Blackfriars br.
 D d Grove, Great Guildford street
 F d Grove, Mile end
 G c Grove, Mile-end road
 A a Grove-end road
 A f Grove gore, Kensington
 B b Grove house, Regent's park
 G h Grove lane, Office row
 B b Grove place, Lisson grove
 G c Grove place, Mile-end road
 E h Grove place, Walworth common
 A a Grove road, Grove-end road
 B b Grove road, Lisson-grove walk
 G c Grove road, Mile-end road
 F e Grove street, Commercial road
 G c Grove street, Mile-end road
 C a Grove street, Park street
 G a Grove street, Well street
 G h Grove street, Windmill lane
 F e Grove street, Lower, Cable street
 D c Guildford place, Coppice row
 D c Guildford place, Foundling hospital
 D e Guildford street, Great, Union street
 C c Guildford street, Little, Russell square
 D e Guildford street, Little, Union street
 D c Guildford st. Lower, Foundling hosp.
 D c Guildford st. Upper, Foundling hosp.
 C f Guildhall, Westminster
 E f Gun alley, Bermondsey street
 F f Gun alley, Wapping
 G e Gun lane, Commercial road
 D f Gun street, Friar street
 E d Gun street, Spital square
 E f Gun wharf, Wapping
 E f Gun yard, Tooley street
 C h Gunner's stairs, Vauxhall place
 E d Gutter lane, Cheapside
 E f Guy's hospital, Borough
 E c Haberdashers' almshouses, Hoxton
 E c Haberdashers' row, Charles square
 E b Haberdashers' street, Charles square
 F a Hackney
 E a Hackney cottages, Hertford road
 F b Hackney foot-path bridge
 F b Hackney road
 G a Hackney terrace, Hackney
 C b Hadlow street, Burton crescent
 F b Haggerstone, Kingsland road
 F b Haggerstone lane, Haggerstone
 F c Hague st. Thomas st. Bethnal-green
 A f Hale house, Gore lane
 C h Hale's place, New road
 F c Half-Nichol street, Shoreditch
 E d Half-moon alley, Bishopgate
 F c Half-moon street, Piccadilly
 F b Half-moon yard, Goodman's fields
 F d Halifax street, Whitechapel
 B f Halkin street, Grosvenor place
 D g Hall place, Kennington lane
 E c Hambro' wharf, Upper Thames st.
 D b Hamerton place, New road
 D b Hamilton place, Old road
 D e Hamilton place, Piccadilly
 C b Hampden street, Clarendon square
 C b Hampstead road, Tottenham ct. rd.
 D g Hampton street, Newington
 H e Hanbury place, King street
 E d Hand alley, Long alley
 G d Hannibal road, Stepney green
 B b Hanover lodge, Regent's park
 E h Hanover place, Kent road
 C h Hanover place, Millbank
 C a Hanover square, Oxford street
 F f Hanover stairs, Rotherhithe street
 C d Hanover street, Hanover square
 C d Hanover street, Long Acre
 D h Hanover street, Newington
 F f Hanover street, Rotherhithe
 B b Hanover terrace, Regent's park
 E e Hans place, New road
 B o Hans street, Sloane street

- C d Hanway street, Oxford street
 B c Harcourt street, Crawford street
 E d Hare court, Aldersgate street
 F c Hare marsh, Hare street
 F c Hare street, Brick lane
 E b Hare walk, Hoxton
 F c Hare's lane, Bethnal-green road
 B c Harley mews, New Wimpole street
 B d Harley mews, Wigmore street
 H c Harley place, New road
 B d Harley street, Cavendish square
 B c Harley street, Upper, New road
 E f Harold street, Horsleydown
 D d Harp alley, Faringdon street
 E e Harp lane, Lower Thames street
 E g Harper street, New Kent road
 D e Harpur street, Theobald's road
 C a Harrington street, Hampstead road
 G e Harris street, Brook street
 D b Harrison street, Gray's-inn lane
 G b Harrod street, Green street, Old Ford
 F e Harrow alley, Aldgate high street
 A c Harrow road, Edgeware road
 B c Harrow street, Lisson grove
 E f Harrow street, Mint street
 C d Hart street, Bloomsbury square
 E e Hart street, Crutched-friars
 B d Hart street, Duke street
 F c Hart's lane, Bethnal-green road
 C d Hart street, Long-acre
 D g Hart street, Weymouth street
 E d Hart street, Wood street
 D h Hartford place, Walworth
 E b Harvey street, Hoxton
 D f Hatfield street, Broad wall
 D d Hatton garden, Holborn hill
 E a Hatton street, Lower street
 A a Hatton street, North street
 D c Hatton wall, Leather lane
 D c Hardwick street, Wilmington square
 D d Haughton street, Drury lane
 E g Hawkesbury place, Salisbury place
 C e Hay hill, Dover street
 D c Hay's place, St. John's street
 B e Hay's street, Berkeley square
 F e Haydon square, Minories
 F e Haydon yard, Haydon square
 C e Haymarket, Piccadilly
 C e Haymarket theatre, Charles street
 F b Heath place, Hackney road
 G e Heath street, Commercial road
 D c Heathcote street, Gray's-inn lane
 C e Heddon street, Regent street
 D a Hedge row, Islington
 E c Helmet row, Old street
 C e Hemming's row, Castle street
 C g Hendon street, Gillingham street
 F d Hengace street, Brick lane
 D c Henrietta street, Brunswick square
 B d Henrietta street, Cavendish square
 C e Henrietta street, Covent garden
 B d Henrietta street, Duke street
 F b Henrietta street, Hackney road
 C e Henry street, Brook street
 F e Henry street, Church lane
 D c Henry street, Gray's-inn road
 A f Henry street, Knightsbridge
 A g Henry street, Marlborough street
 G d Henry street, North street
 E c Henry street, Old-street road
 B a Henry street, Portland town
 D b Henry street, Rodney street
 G d Henry street, Stepney
 G d Henry street, Trafalgar square
 F d Henry street, Turner street
 D h Henry street, Vauxhall road
 D f Henry street, Waterloo road
 D g Hercules buildings, Westminster road
 A g Hereford cottage, Brompton
 B c Hereford place, Lisson grove
 B c Hereford place, Stafford street
 B d Hereford street, Park street
 D b Hermes street, John street
 A c Hermilday street, Paddington
 D b Hermitage place, St. John street road
 F f Hermitage stairs, Wapping
 F f Hermitage street, Wapping
 G c Hertford place, Globe lane
 F a Hertford place, Kingsland road
 E a Hertford road, Regent's canal
 C c Hertford street, Fitzroy square
 B e Hertford street, Park lane
 C b Hertford street, Skinner street
 D d High Holborn
 E h High park, East lane, Walworth
 B e High row, Knightsbridge
 C g High street, Church street
 D b High street, City road
 A e High street, Kensington
 B c High street, Marylebone
 D g High street, Newington
 C d High street, Oxford street
 G d High street, Stepney green
 F d High street, Whitechapel road
 E a High-timber st. Upper Thames street
 D f Higler's lane, New Cut
 B e Hill street, Berkeley square
 D f Hill street, Great Surrey street
 B b Hill street, Park road
 E c Bill street, Paul street
 B d Hinde street, Marylebone lane
 A a Hinton's place, Grove road
 F d Hinton street, Dog row
 E c Hogg lane, Norton Falgate
 D d Holborn
 D d Holborn bridge, Holborn hill
 D d Holborn hill
 D d Holborn row, Lincoln's-inn fields
 B a Holford house, Regent's park
 C g Holland buildings, Market street
 D e Holland street, Great Surrey street
 C d Hollen street, Wardour street
 A g Holles place, Putney road
 C d Holles street, Oxford street
 D d Holles street, Stanhope street
 E c Hollow, Brick lane
 F d Holloway street, Church lane
 B b Holme, The, Regent's park
 G d Holmes street, Commercial road
 D h Hollyfield row, Workhouse lane
 E c Holywell lane, Shoreditch
 E c Holywell row, Curtain road
 C g Holywell row, Horseferry road
 C g Holywell street, Millbank road
 D d Holywell street, Strand
 B c Homer place, Lisson grove
 B c Homer row, Crawford street
 D f Homer street, Carlisle place
 B c Homer street, Crawford street
 E d Honey-lane market, Cheapside
 A f Hoop and Toy, Brompton
 D c Hooper's street, St. John's street

- C e Hop garden, St. Martin's lane
 F c Hope street, Brick lane
 F b Hope street, Hackney road
 C d Hopkins street, Broad street
 D e Hopton's almshouses, Green walk
 B c Horse bazaar, Baker street
 C e Horse guards, Whitehall
 D a Horsefall's basin, Regent's canal
 C g Horseferry, Millbank
 C g Horseferry road, Regent street
 E g Horsemonger lane, Newington road
 E d Horseshoe alley, Elder street
 E d Horseshoe alley, Petticoat lane
 E f Horsleydown, Tooley street
 E f Horsleydown lane, Horsleydown
 F f Horsleydown sq., St. Saviour's dock
 F f Horsleydown new stairs, Shad Thames
 F f Horsleydown old stairs, Shad Thames
 D d Hosier lane, Cock lane
 D d Houghton street, Clare market
 E d Houndsditch, Leadenhall street
 D c House of Correction
 C f Houses of Parliament
 F b Howard place, Hackney road
 E e Howard street, Norfolk street
 C c Howland street, Cleveland street
 E b Hoxton New town
 E c Hoxton road
 E c Hoxton square, Hoxton road
 E e Hudson's-bay house, Fenchurch st.
 E d Huggin lane, Wood street
 E e Huggin alley, Upper Thames street
 B g Hugh street, Belgrave road
 E c Hall's place, John's row
 E c Hull street, John's row
 C e Hungerford market, Strand
 C e Hungerford stairs, Hungerford market
 C e Hungerford street, Strand
 F d Hunt's court, Hunt street
 F d Hunt street, Spicer street
 D c Hunter street, Brunswick square
 E g Hunter street, Kent street
 E g Hunter street, Little, Kent street
 E b Huntingdon street, Kingsland road
 C c Huntley street, Francis street, Tot-
 tenham-court road
 B a Hunt walk, Dorset square
 B e Hyde park
 B f Hyde-park corner, Piccadilly
 A d Hyde-park gardens, Hyde-park sq.
 A d Hyde-park gardens' mews, Hyde-
 park square
 B d Hyde-park place, Oxford street
 B d Hyde-park street, Hyde park
 B d Hyde-park terrace, Hyde park
 E b Hyde place, Regent's canal
 C g Hyde place, Regent street
 C d Hyde street, High Holborn
 E e Idol lane, Great Tower street
 C e Imperial club, Bennet street
 F b Imperial gas-works, Gloucester street
 F b Independent gas-works, Kingsland rd.
 B d Institute of British Architects
 F b Ironmongers' almshouses, Kingsland
 road
 B a Iron bridge, Regent's park
 E d Ironmonger lane, Cheapside
 G f Island Great Surrey canal
 G e Island row, Commercial road
 H g Isle of Dogs
 E a Islington
 D a Islington terrace, Thornhill road
 E b Ivy lane, Gloucester terrace
 D d Ivy lane, Newgate street
 E b Ivy street, Gloucester terrace
 F f Jacob street, Bermondsey wall
 H e Jamaica court, Commercial road
 F g Jamaica row, Rotherhithe
 G e Jamaica street, Commercial road
 H e Jamaica street, Commercial road
 G e James place, Brook street
 F b James place, Hackney road
 F g James place, Jamaica road
 D h James place, New road
 C f James street
 F e James street, Cannon street
 G e James street, Catherine stairs
 F c James street, Church street
 D c James street, Gray's-inn road
 C e James street, Haymarket
 F a James street, Hertford place
 E b James street, Hoxton
 H f James street, Isle of Dogs
 E g James street, Kent road
 A f James street, Kensington
 D g James street, Lambeth
 D f James street, Lambeth marsh
 E c James street, Leonard street
 C d James street, Long-acre
 A g James street, Marlborough road
 E c James street, Old street
 B d James street, Oxford street
 F b James street, Regent's canal
 D c James street, Theobald's road
 G d James street, Trafalgar square
 B c James street, Great, Lisson grove
 E b James street, Great, Queen's row
 B c James street, Little, Devonshire st.
 C d James street, Little, Golden square
 D c James street, Lower, Gray's-inn lane
 C d James street, Upper, Golden square
 E g Jane place, Kent road
 F e Jane street, Commercial road
 F b Jane street, Hackney road
 B d Jebb's court, Oxford road
 G d Jeffery's terrace, Mile-end road
 C e Jermyn street, Piccadilly
 D f Jetsom street, Wellington street
 G c Jews' burial-ground, Mile-end road
 F d Jews' burial-ground, North street
 G d Jews' hospital, Mile-end road
 B g Jews' row, Chelsea
 F b Jews' schools & chapel, Cambridge rd.
 F c Jews' walk, Bethnal green
 E d Jewin street, Aldersgate street
 E e Jewry street, Leadenhall street
 D d Jockey fields, Theobald's row
 E c John's row, Brick lane
 G d John street, Beaumont square
 C b John street, Brewer street
 F b John street, Cambridge heath
 B f John street, College place
 F e John street, Commercial road
 B c John street, Crawford street
 E c John street, Curtain road
 F d John street, Dog row
 F d John street, Ducking-pond row
 E h John street, East lane
 F a John street, George street
 D c John street, Gray's-inn lane
 E f John street, Great Suffolk street
 D f John street, Great Surrey street

- E b John street, Hackney road
 B e John street, Hill street
 E g John street, Kent road
 C c John street, London street
 C d John street, Margaret street
 E e John street, Minories
 F e John street, Neckinger road
 E h John street, New Kent road
 F e John street, New road
 G e John street, Old Gravel lane
 F e John street, Ratcliff highway
 D b John street, Rodney street
 C e John street, St. James's square
 C g John street, St. John's church-yard
 G e John street, Salmon lane
 F d John street, Samuel street
 E f John street, Snow's fields
 F d John street, Stepney
 D g John street, Union street
 B c John street, Upper York street
 D f John street, Waterloo road
 D e John street, Waterloo road
 E d John street, Little, Golden square
 C d John street, Upper, Golden square
 G d John street, Upper, John street
 D c John street, Upper, King's road
 D e John street, Great Surrey street
 F e John street, New road
 C e John street, Strand
 C h Johnson's dock, Millbank
 G d Johnson's lock, Regent's canal
 C h Johnson's place, Cross lane
 G e Johnson's street, Back road
 C a Johnson's street, Union street
 E f Joiner's street, Tooley street
 D g Joiner's street, Westminster road
 C h Jonathan street, Vauxhall walk
 F e Joseph street, Back road
 C b Joseph street, Cromer street
 F e Jubilee place, Commercial road
 A g Jubilee place, King's road
 C b Judd place, New road
 C b Judd street, Burton crescent
 B a Kelso place, Princes street
 B g Kemp's row, Grosvenor canal
 B c Kendal mews, Baker street
 D h Kennington common, Kennington rd.
 D h Kennington cross, Kennington green
 D h Kennington green, Kennington road
 D h Kennington oval, New road
 D h Kennington place, Kennington road
 D h Kennington place, Vauxhall road
 D h Kennington road, High street
 D h Kennington row, Kennington
 A e Kensington gardens
 A f Kensington gore, High street
 A e Kensington palace
 C g Kensington place
 A f Kensington square, Kensington
 E h Kent road
 E g Kent street, Borough
 F b Kent street, Cambridge street
 B b Kent terrace, Regent's park
 C c Kenton street, Great Coram street
 C e Keppel mews, North, Keppel street
 C c Keppel mews, South, Keppel street
 E f Keppel street, Bridge street
 B g Keppel street, Marlborough road
 C c Keppel street, Russell square
 E f Kettle alley, Borough
 G e Kidney stairs
 D f Kinaston street, Oakley st. Lambeth
 C d King court, Dean street
 G f King and Queen stairs
 F e King-David lane, Upper Shadwell
 F f King-Edward stairs, Wapping
 D e King-Edward street, Bridge street
 F d King-Edward street, Whitechapel rd.
 F f King-James's stairs
 G b King's-arms row, Old Ford row
 D f King's-arms stairs, Belvidere road
 E d King's-arms yard, Coleman street
 D f King's-bench alley
 D f King's-bench prison, Borough road
 D f King's-bench walk, Fleet street
 D f King's court, Great Suffolk street
 A g King's head, Earl's court
 D d King's-head court, Shoe lane
 E f King's-head court, Tooley street
 G d King John's palace, Stepney green
 G f King's mill
 A h King's parade, King's road
 C a King's place, Aldenham terrace
 C e King's place, Pall-mall
 C a King's road, Pancras
 A g King's road, Chelsea
 D c King's road, Gray's-inn lane
 E b King's road, Kingsland road
 G g King's road, Rotherhithe
 G g King's row, Rotherhithe
 D b King's row, Clarence row
 G g King's row, Deptford Lower road
 F d King's row, Dog row
 A f King's row, Knightsbridge
 E f King's row, Shad Thames
 E h King's row, Walworth
 E c King's square, Goswell road
 H h King's stairs, Deptford
 F f King's stairs, Rotherhithe street
 B d King street, Baker street
 E g King street, Bermondsey new road
 E f King street, Borough
 F c King street, Brick lane
 D f King street, Bridge road
 C d King street, Broad street
 F e King street, Chapel street
 E a King street, Cheapside
 F d King street, Church street
 C a King street, College street
 C e King street, Covent garden
 C d King street, Dean street
 H e King street, Dockhead
 C d King street, Drury lane
 E h King street, East street
 B c King street, Gloucester street
 C d King street, Golden square
 E c King street, Goswell road
 F b King street, Hackney road
 A e King street, High street
 E c King street, Hoxton square
 E h King street, Kent road
 D g King street, Lambeth walk
 F e King street, Little Tower hill
 E a King street, Lower street
 A g King street, Marlborough square
 F f King street, Old Gravel lane
 E c King street, Old street
 B d King street, Park lane
 C d King street, Prince's street
 F g King street, Rotherhithe wall
 C e King street, St. James's street
 F c King street, Turk street

- C f King street, Whitehall
 F e King street, White-horse street
 E d King street, Wilson street
 B d King-street mews, Park street
 D c King street, Upper, Bloomsbury sq.
 E e King William street, Cornhill
 D d Kingsgate street, High Holborn
 E h Kingsland
 F a Kingsland crescent, Kingsland road
 E c Kingsland road, Shoreditch
 A f Kingston house, Knightsbridge
 B f Kinnerton street, Wilton place
 D d Kirby street, Hatton garden
 F b Kitsford place, Hackney road
 D d Knight-Rider st. St. Paul's church-yd.
 A f Knightsbridge
 C h Knight's place, South Lambeth
 G e Labour-in-Vain st. Upper Shadwell
 E d Lad lane, Wood street
 D d Lamb's buildings, Temple
 D c Lamb's-conduit passage, Guildford pl.
 D c Lamb's-conduit place, Guildford place
 D c Lamb's-conduit street, Theobald's rd.
 F c Lamb's row, Bethnal-green road
 E f Lamb street, Bermondsey street
 E c Lamb street, Chiswell street
 F d Lamb street, Wheeler street
 F e Lambert street, Church lane
 C g Lambeth Butts, Vauxhall walk
 C g Lambeth charity school, Church st.
 E e Lambeth hill, Upper Thames street
 D f Lambeth marsh, Bridge road
 B e Lambeth mews, Curzon street
 D g Lambeth palace, Bishop's walk
 D g Lambeth road, St. George's road
 C g Lambeth stairs, Bishop's walk
 C g Lambeth terrace, Canterbury place
 D g Lambeth walk, Workhouse lane
 D e Lambeth water-works
 C b Lancaster street, Burton crescent
 E e Langbourne chambers, Fenchurch st.
 A a Langford place, Grove end
 C c Langham place, Portland place
 C d Langley street, Long-acre
 D c Lansdowne place, Brunswick square
 F a Lansdowne place, London fields
 E f Lant street, Blackman street
 F b Lark row, Blue-Anchor lane
 F f Lauton's row, Wapping
 G f Lavender lane, Queen street
 C h Lawn, The, South Lambeth
 E d Lawrence lane, Cheapside
 E e Lawrence Pountney lane, Cannon st.
 A h Lawrence street, Cheyne walk
 C b Laxton place, York place
 D e Laystall street, Leather lane
 E e Leadenhall street, Cornhill
 A g Leader street, Marlborough road
 D c Leather lane, Holborn hill
 E h Lebanon place, Walworth
 B d Lee's mews, Park street
 C d Leg alley, Long acre
 E b Leg-of-mutton gardens, Hoxton road
 C e Leicester place, Leicester square
 C e Leicester square, Castle street
 C e Leicester street, Leicester square
 C c Leigh street, Burton crescent
 D d Leigh street, Red-lion square
 F e Lemn street, Goodman's fields
 D f Lemon street, Union street
 E c Leonard street, Curtain road
 G e Limehouse, West-India docks
 G e Limehouse causeway, Three-colts' st.
 G e Limehouse corner, Three-colts' street
 H e Limehouse cut
 G e Limehouse dock
 G f Limehouse-hole stairs
 G f Limekiln hill, Limehouse
 E e Lime street, Leadenhall street
 D d Lincoln's inn, Lincoln's-inn fields
 D d Lincoln's-inn fields, Holborn
 D d Lincoln's-inn gardens, Lincoln's-inn fields
 C d Lion street, Hart street
 D d Lion street, Holborn
 E g Lion street, New Kent road
 D c Liqueurpond street, Gray's-inn lane
 F d Lisbon street, Dog row
 C e Lisle street, Leicester square
 B c Lisson grove, North, Grove road
 B c Lisson place, Edgeware road
 B c Lisson street, Edgeware road
 C d Lichfield street, Grafton street
 F c Little Anchor street
 F c Little Bacon street, Church street
 D d Little Bridge street, Bridge street
 C f Little Capel street, James street
 B e Little Charges street, Piccadilly
 F d Little Collingwood street, Dog row
 D a Liverpool road, Islington
 E d Liverpool street, Bishopsgate street
 D b Liverpool street, New road
 E h Liverpool street, Walworth
 D b Lloyd square, New-river head
 D b Lloyd's row, St. John-street road
 D b Lloyd street, Lloyd square
 E h Lock place, Walworth
 B b Lodge road, Grove road
 F d Lombard street, Church street
 E e Lombard street, Cornhill
 D d Lombard street, Fleet street
 E e London bridge, New
 F f London docks
 F a London fields, Hackney
 F d London hospital, Mile-end road
 E e London Institution
 F a London lane, Hackney
 F a London place, Hackney
 D g London road, Borough road
 C e London street, Cleveland street
 G e London street, Commercial road
 F f London street, Dockhead
 E e London street, Fenchurch street
 D g London street, London road
 F c London street, North street
 A d London st., South wharf rd., Paddingt.
 F a London terrace, Hackney
 F b London terrace, Hackney road
 C e London University, Tottenham ct. rd.
 E d London wall, Wood street
 C d Long-acre, Drury lane
 E d Long alley, Finsbury square
 E f Long lane, Borough
 D d Long lane, West Smithfield
 D c Long yard, Lamb's-conduit street
 D h Loughborough street, Vauxhall road
 B b Lord's cricket-ground
 E d Lothbury, Coleman street
 G d Louisa street, Beaumont square
 F h Lovegrove street, Kent road

- D e Love lane, Bankside
 G e Love lane, Cock hill
 E e Love lane, Lower Thames street
 F f Love lane, Old Gravel lane
 F g Love lane, Rotherhithe street
 E d Love lane, Wood street
 E a Lower street, Lower road, Islington
 D f Lowman's street, Gravel lane
 B f Lowndes place, Belgrave square
 B f Lowndes square, Knightsbridge
 B f Lowndes street, Lowndes square
 F c Lucas street, Bethnal green
 F e Lucas street, Back road
 F g Lucas street, Rotherhithe street
 D d Ludgate hill, Bridge street
 D d Ludgate st., St. Paul's church-yard
 E c Luke street, Paul street
 B g Lunatic Asylum, Marlborough road
 D e Lyceum theatre
 C d Lyon's inn, Newcastle street, Strand
 D f Lying-in Hospital, York road, Westminster bridge
 C b Mabledon place, New road
 B a Macclesfield bridge, Regent's park
 E b Macclesfield street, City road
 C d Macclesfield street, Gerrard road
 C d Maddon street, Gt. Hanover square
 C d Maddon street, Little Bond street
 G c Madhouse, Bethnal green
 E a Madhouse, Regent's canal
 E f Magdalen street, Tooley street
 A a Maida hill, West, Edgeware road
 D e Maiden court, Broad wall
 D h Maiden lane, New road
 C e Maiden lane, Strand
 E e Maiden lane, Upper Thames street
 E d Maiden lane, Wood street
 D a Maiden-lane bridge, Regent's canal
 G c Maidman's row, Mile-end road
 F b Maidstone pl. Goldsmiths' almshouses
 G f Maling place, Clarence street
 E a Malson's cottage, Kingsland road
 D a Malverne terrace, Thornhill terrace
 C f Manchester buildings, Bridge street
 B d Manchester square, Baker street
 F c Manchester street, Bethnal-green rd.
 D b Manchester street, Gray's-inn lane
 B c Manchester street, Manchester square
 F c Manchester street, Market street
 D h Manley place, Kennington common
 A h Manor buildings, King's road
 G h Manor house, Trundler's lane
 F h Manor mill, Deptford Lower road
 A h Manor place, Cheyne walk
 D h Manor place, Walworth
 A h Manor place, New King's road
 G h Manor row, Deptford Lower road
 A h Manor row, King's road
 A h Manor street, Cheyne walk
 F e Mansel street, Goodman's fields
 D g Mansfield street, Borough road
 F b Mansfield street, Kingsland road
 C b Mansfield street, Portland place
 E e Mansion-house street, Cornhill
 F c Map's street, Bethnal-green road
 C c Marchmont street, Brunswick square
 F a Mare street, Hackney
 C d Margaret street, Cavendish square
 G e Margaret street, Commercial road
 F b Margaret street, Gloucester street
 F b Margaret street, Hackney fields
 D h Margaret street, Jonathan street
 D c Margaret street, Wilmington square
 F g Maria place, Blue-anchor road
 G d Maria street, Beaumont square
 F b Maria st., Thomas st., Hackney road
 F g Marine crescent, Neckinger road
 F f Mariners' stairs
 H d Maritime almshouse
 B e Market street, Curzon street
 F c Market street, Hart street
 D h Market street, Kennington lane
 D g Market street, London road
 C g Market street, Millbank street
 C d Market street, Oxford market
 A c Market street, Paddington
 E e Mark lane, Fenchurch street
 E c Mark street, Paul street
 A g Markham street, King's road
 C e Marlborough house, Pall-mall
 C e Marlborough-house st., St. James's
 C d Marlborough-house ter., St. James's
 C d Marlborough mews, Marlborough st.
 F h Marlborough place, Greenwich road
 D h Marlborough place, Kennington green
 A g Marlborough road
 F h Marlborough road, Kent road
 A g Marlborough square, Bond street
 C d Marlborough st. Great, Regent street
 C d Marlborough st. Little, Marlboro' st.
 F e Marmaduke street, Cannon-street rd.
 B a Marquis of Hertford's villa, Regent's park
 C d Marshall street, Golden square
 D g Marshall street, St. George's road
 C g Marsham street, Market street
 F b Martha street, Cambridge heath
 F e Martha street, Cornwall street
 E e Martin's lane, Upper Thames street
 F c Mary's row, Bethnal-green road
 H d Mary's row, Prospect place
 F e Mary street, Chapman street
 F e Mary street, Christian street
 C b Mary street, Hampstead road
 D f Mary street, Paris street
 G e Mary street, Salmon lane
 G d Mary street, Trafalgar square
 E g Marigold court, Bermondsey
 F g Marigold street, Rotherhithe street
 B d Marylebone lane, Oxford street
 C e Marylebone street, Regent street
 B c Marylebone street, Great, High st.
 B c Marylebone st. Little, Weymouth st.
 C e Marylebone st. Upper, Portland rd.
 B c Marylebone workhouse, New road
 E c Mason's row, New North road
 D e Mason's stairs, Bankside
 E g Mason street, Kent road
 D f Mason st. Westminster-bridge road
 F b Matthew's place, Hackney road
 C e May's buildings, St. Martin's lane
 F e Mayfield's buildings, New road
 F a Mayfield place
 E f Maze, The, Tooley street
 E f Maze pond, Weston street
 F f Mead lane, London-docks
 D g Mead row, Asylum
 F c Mead street, Castle street
 E g Meadow row, New Kent road
 D d Meal yard, Faringdon street
 C d Meard's court, Dean street
 D c Mecklenburgh court, Gray's-inn lane

- D c Mecklenburgh sq., Foundling hosp.
 D c Mecklenburgh terr., Gray's-inn lane
 C g Medway street, Horseferry road
 F f Meeting-house lane, Old Gravel lane
 E f Meeting-house walk, Snow's-fields
 B c Melcomb street, Dorset square
 E f Melior street, Snow's-fields
 C b Melton place, Euston square
 C b Melton street, Euston square
 G e Mercers' almshouses, White-horse st.
 F e Mercer street, Ratcliff highway
 C d Mercer street, Long-acre
 H c Merchant Seamen's Asylum
 D c Meredith street, St. John street
 D c Merlin place, Wilmington square
 E h Merrow street, Walworth street
 B c Mews, Dorset square
 A f Michael's grove, Brompton row
 A f Michael's place, Brompton row
 E c Michael street, Brick lane
 D d Middle row, Holborn
 A f Middle street, Brompton square
 C e Middle Scotland yard, Whitehall
 C e Middle Shadwell, Upper Shadwell
 C c Middlesex buildings, Foley street
 C c Middlesex hospital, Charles street
 C b Middlesex street, Somers town
 D b Middleton square, Chadwell street
 D c Middleton street, St. John-street road
 D b Middleton terrace, King's road
 F d Mile-end green, Mile-end road
 G c Mile-end lock, Regent's canal
 G c Mile-end road
 E d Miles lane, Arthur street
 C h Miles street, Belgrave place
 D e Milford lane, Strand
 B g Military asylum, King's road
 E d Milk street, Chapside
 C h Millbank stairs
 C g Millbank street, Abingdon street
 E f Mill lane, Tooley street
 G e Mill place, Commercial road
 H h Mill point, Isle of Dogs
 F g Mill-pond row, Rotherhithe street
 F g Mill-pond street, Jamaica row
 E b Mill row, Kingsland road
 F f Mill stairs, Bermondsey wall
 F f Mill street, Bermondsey wall
 C d Mill street, Conduit street
 D g Mill street, Lambeth walk
 H f Mill wall, Ferry rd., West-India docks
 H f Mill-wall stairs
 F e Mill yard, Rosemary lane
 C a Miller street, Arlington street
 D c Millman street, Little Guildford st.
 E d Milton street, Fore street
 B a Milton street, New road
 E h Mina place, Kent road
 E e Mincing lane, Fenchurch street
 B g Minerva street, Belgrave street
 F b Minerva street, Hackney road
 E c Minories, Leadenhall street
 E f Mint square, Mint street
 E f Mint street, Borough
 B c Mitchan's place, Great Lisson street
 E c Mitchell street, Brick lane
 D a Mitre court, Upper street
 E c Mitre street, Aldgate within
 D f Mitre street, New cut
 E b Moffat street, City road
 E c Molsay street, Curtain road
 B d Molton lane, South, Oxford street
 B d Molton street, South, Oxford street
 B c Molyneux street, Crawford street
 E b Moncey street, Nile street, East lane
 E d Monkwell street, Wood street
 E h Monmouth place, East lane
 C d Monmouth street, Broad street
 F d Monmouth street, Phoenix street
 B g Monster row, Chelsea bridge
 E f Montague court, Wellington street
 B d Montague house, Portman square
 G h Montague place, Deptford Lower road
 B c Montague place, Montague square
 C c Montague place, Russell square
 B d Montague square, Crawford street
 C c Montague street, Great Russell street
 F d Montague street, Montague square
 F d Montague street, Wentworth street
 B c Montague st. Upper, Montague square
 G c Montague terrace, Mile-end road
 D h Montford place, Kennington green
 D h Montpelier gardens, Walworth
 A f Montpelier row, Montpelier square
 A f Montpelier square, Brompton
 D a Moon street, Cabson square
 E d Moor lane, Fore place
 D g Moor place, Lambeth road
 D g Moor place, Little, Lambeth road
 B d Moor street, Edgeware road
 C d Moor street, Grafton street
 E d Moorfields
 E d Moorfields, Little, Fore street
 E f Morgan's lane, Tooley street
 F c Morgan's row, White-horse street
 G c Morgan street, Tredegar square
 C a Mornington crescent, Camden town
 C b Mornington place, Hampstead road
 G c Morpeth street, Green street
 G f Morrison's place, Rotherhithe street
 C c Mortimer market, Tottenham-ct. rd.
 C d Mortimer street, Cavendish square
 D g Morton street, Newington road
 A d Moscow road, Black-lion lane
 F d Moses-and-Aaron alley, Whitechapel
 B f Melcomb street, Wilton crescent
 D g Mount gardens, Mount street
 F d Mount place, Whitechapel road
 D b Mount row, City road
 B e Mount row, Grosvenor square
 E g Mount row, New Kent road
 D f Mount street, Bridge road
 F c Mount street, Castle street
 B e Mount street, New road
 B e Mount street, Park lane
 F h Mount street, Walworth
 G c Mulberry street, Commercial road
 C d Museum street, Great Russell street
 D b Myddleton street, Hermitage place
 E b Myrtle street, Gloucester terrace
 C e National gallery, Trafalgar square
 E f Nag's-head alley, Borough
 G e Narrow street
 C d Nassau street, Gerrard street
 C d Nassau street, Middlesex hospital
 D f Navarino street, Waterloo road
 E c Neal street, City road
 B g Neat-house road, St. George's place
 F g Neckinger road, Grange road
 K g Neckinger street, Neckinger road
 E b Nelson place, City road
 E g Nelson place, Kent road

- D f Nelson square, Great Surrey street
 C a Nelson street, Arlington street
 F c Nelson street, Castle street
 E c Nelson street, City road
 F d Nelson street, Commercial road
 F b Nelson street, Hackney road
 F b Nelson street, Regent's canal
 E f Nelson street, Snow's fields
 G d Nelson street, Trafalgar square
 D b Nelson terrace, City road
 F g Neptune street, Rotherhithe street
 F e Neptune street, Wellclose square
 D d Nevill's court, Fetter lane
 E d New Broad street, London wall
 C a New Church, Pratt street
 A c New Church street, Maida vale
 A c New Church street, Portman market
 F f New Church street, Rotherhithe st.
 D h New Court, Newington
 G f New Court, Queen street
 F f New Crane stairs, Wapping
 G e New Cut, Limehouse
 D f New Cut, Waterloo road
 F c New George street, Brick lane
 F f New Gravel lane, Upper Shadwell
 G d New Grove street, Mile-end road
 D d New Inn, Wych street
 E c New-inn yard, Curtain road
 E g New Kent road
 G b New King street, Globe town
 F c New Nichol street, Shoreditch
 E b New North road, Hoxton
 E c New North street, Paul street
 D c New North street, Theobald's road
 C h New Ranelagh road, Millbank
 D b New-river head, Myddleton square
 D e New-river yard, Dorset street
 C b New road
 B c New road
 F e New road, Cable street
 F d New road, Cannon-street road
 C h New road, Millbank
 B f New road, Sloane park
 C h New road, Vauxhall road
 E d New street, Aldersgate street
 E d New street, Bishopsgate street
 E f New street, Bridge street
 E c New street, City road
 B c New street, Dorset square
 F c New street, Duke street
 E h New street, East lane
 E f New street, Fair street
 D f New street, Gravel lane
 D h New street, Kennington road
 G e New street, Lower Shadwell
 F g New street, Neptune street
 E g New street, New Kent road
 F d New street, New road
 D f New street, North street
 E c New street, Old street
 C e New street, St. Martin's lane
 E f New street, St. Thomas street
 C e New street, Spring gardens
 G e New street, Three-coils' street
 B c New street, Upper Baker street
 D h New street, Vauxhall street
 D f New street, Waterloo road
 F d New street, White-horse street
 D d New street, Great, Fetter lane
 D d New street, Little, Shoe lane
 B b New street Mews, Dorset square
 C f New Way, Orchard street
 D d Newcastle street, Faringdon street
 E g Newcastle street, Kent road
 D d Newcastle street, Strand
 F d Newcastle street, Whitechapel
 D d Newgate
 D d Newgate market, Newgate street
 D d Newgate street, Cheapside
 D g Newington butts
 D h Newington court, Kennington
 E h Newington new church, Walworth
 D h Newington place, Kennington road
 D g Newington road, Borough road
 B g Newland street, Coleshill street
 C d Newman street, Oxford street
 B c Newnham street, John street
 C d Newport market, Litchfield street
 D g Newport street, Lambeth walk
 C d Newport street, Gt., St. Martin's lane
 C d Newport street, Little, Lisle street
 D d Newton street, High Holborn
 E b Newton street, New North road
 E e Nicholas lane, Lombard street
 E b Nicholas street, New North road
 F c Nichol's row, Church street
 E d Nichol's street, New, Shoreditch
 E d Nichol's street, Old, Shoreditch
 G e Nightingale lane, Narrow street
 F f Nightingale lane, Wapping
 B a Nightingale street, Grove road
 E b Nile street, City road
 D g Nile street, Weymouth street
 E d Noble street, Foster lane
 E c Noble street, Goswell street
 D c Noble street, Wilmington square
 A f Noel house, Kensington
 E g Noel street, Bermondsey new road
 C d Noel street, Wardour street
 E c Norfolk place, Curtain road
 A g Norfolk place, Marlborough road
 D g Norfolk place, St. George's road
 D g Norfolk row, Paradise row
 D f Norfolk street, Bridge street
 D b Norfolk street, Cleveland street
 F d Norfolk street, Dog row
 G c Norfolk street, Globe lane
 E a Norfolk street, Lower road
 D b Norfolk street, Maiden lane
 F d Norfolk street, New road
 D e Norfolk street, Strand
 E a Norfolk street, New, Islington
 B d Norfolk street, New, Park lane
 E c Norman's street, Old street
 D d Norris court, Fetter lane
 E b Norris street, Hoxton
 B b North bank, Park road
 C c North crescent, Tottenham-court rd.
 G c North place, Bethnal green
 D g North place, West square
 D c North place, Upper, Gray's-inn lane
 B d North Portman mews, Baker square
 B d North row, Park lane
 D a North street, Battlebridge
 F e North street, Bethnal-green road
 F e North street, Church lane
 G c North street, Globe lane
 G c North street, Green street
 E h North street, Lock's fields
 F d North street, Mile-end road
 C g North street, Millbank street
 G d North street, Old road

- E c North street, Old-street road
 E d North street, Oxford street
 D b North street, Pentonville
 B f North street, Sloane street
 D f North street, York street
 A b North street, Great, Maida vale
 B b North street, Little, Great North st.
 F d North street, Little, North street
 E c North street, New, Paul street
 D c North street, New, Red-lion street
 C f North Tothill street, Orchard street.
 A b North-walk terrace, Edgware road
 A c North-wharf road
 C b Northam buildings, Wilsted street
 E b Northampton square, St. John st. rd.
 D b Northampton street, Battlebridge
 E h Northampton street, Kent road
 E a Northampton street, Lower street
 D c Northampton street, St. John st. road
 D b Northampton street, Suffolk street
 C e Northumberland house
 B c Northumberland mews, New road
 B c Northumberland street, New road
 C e Northumberland street, Strand
 E d Norton Falgate, Shoreditch
 C c Norton street, New road
 F b Norway place, Hackney road
 F c Norwell place, Bethnal-green road
 B c Nottingham mews, High street
 F d Nottingham place, Charlotte street
 B c Nottingham place, New road
 F c Nottingham street, Bethnal-green rd.
 B c Nottingham street, High street
 C b Nowel's buildings, Back lane
 F e Numbers street, White-horse street.
 A f Nursery ground, Kensington
 E h Nursery row, East lane
 B d Nutford place, Bryanstone square
 A g Oakham street, Leader street
 F c Oakley's row, Brick lane
 D f Oakley street, Westminster road
 E h Oat lane, Wood street
 D f Obelisk, Great Surrey street
 G d Ocean street, Trafalgar square
 D a Oddy's row, Upper street
 C c Ogle street, Foley street
 E d Old Artillery lane, Union street
 D d Old Bailey, Ludgate hill
 D d Old Barge-house stairs
 C a Old Bethlehem, Bishopsgate street
 A g Old Brompton
 E e Old Change, Cheapside
 E d Old City chambers, Bishopsgate street
 E e Old Fish street, Old Change
 E e Old Fish-st. hill, Upper Thames street
 G b Old-Ford foot-path bridge
 G b Old-Ford lock
 G b Old-Ford road
 G b Old-Ford-road bridge
 F f Old Gravel lane, Ratcliff highway
 E d Old Jewry, Cheapside
 A h Old Magpie stairs, Cheyne walk
 F e Old Nichols street, Shoreditch
 D d Old North street, Red-lion square
 C f Old Pye street, Stretton ground
 D b Old road
 G d Old road, near Stepney church
 E c Old street, Goswell street
 E c Old-street road, Curtain road
 E e Old-swan stairs, Upper Thames street
 F d Old Castle street, Whitechapel
 E h Oliver Cromwell's castle, Kent road
 G c Oliver place, Mile-end road
 D d Olympic theatre, Wych street
 B b Omega street, Alpha road
 A g Onslow terrace, Marlborough road
 C e Opera house, Pall-mall
 D h Orange row, Newington
 D d Orange street, Bloomsbury square
 C e Orange street, Castle street
 F g Orange street, Deptford Lower road
 D f Orange street, Gravel lane
 F f Orchard, The, Wapping
 F b Orchard place, Kingsland road
 G e Orchard street, Broad street
 C f Orchard street, Dean's yard
 B d Orchard street, Oxford street
 G e Orchard row, Commercial road
 B f Orford place, Cadogan street
 B g Orford street, Cadogan street
 A d Orme's square, Bayswater
 D c Ormond mews, Great Ormond street
 B h Ormond row, Chelsea
 D c Ormond street, Great, Queen square
 D c Ormond street, Little, Queen square
 D c Ormond st. New, Lamb's-conduit st.
 E b Orphan school, City road
 F d Osborne place, Brick lane
 F d Osborne street, Whitechapel
 C c Osnaburgh street, New road
 C c Osnaburgh terrace, Osnaburgh street
 C b Ossulston street, Somers' town
 F b Oval, Hackney road
 D h Oval, The, Kennington
 D b Owen's row, Goswell-street road
 C e Oxendon street, Coventry street
 E c Oxford & Cambridge Club, Pall-mall
 C d Oxford market, Oxford street
 A c Oxford mews, Edgware road
 B d Oxford street
 C d Oxford street, Marlborough street
 F d Oxford street, Whitechapel road
 F g Oxley street, Neckinger road
 A c Paddington
 B c Paddington street, High street
 G f Pageant's stairs, Queen street
 C g Page street, Regent street
 E g Page's walk, Grange road
 D f Palace new road, Lambeth palace
 C c Palace row, Tottenham-court road
 C f Palace street, James street
 C f Palace yard, New & Old, Westminster
 C e Pall-mall
 C e Pall-mall East, Cockspur street
 C f Pahnner's street, Little Chapel street
 G e Palmer's street, White-horse street
 C f Palmer's village, Vincent square
 C a Pancras
 C a Pancras bridge, Regent's canal
 E e Pancras lane, Queen street
 C a Pancras lock, Regent's canal
 C b Pancras place, Wilton place
 C c Pancras place, Tottenham-court road
 B f Pantechnicon, Lowndes square
 C d Pantheon, Oxford street
 C e Panton square, Coventry street
 C e Panton street, Haymarket
 F h Paper mill, Blue-anchor road
 D a Parade, Pentonville
 C e Parade, St. James's park
 G c Parade street
 C b Paradise row, Battlebridge

- F c Paradise row, Bethnal green
 B h Paradise row, Chelsea hospital
 D g Paradise row, High street
 H g Paradise row, Isle of Dogs
 E a Paradise row, Lower road
 F g Paradise row, Lower st. Rotherhithe
 B c Paradise street, High street
 E c Paradise street, Paul street
 F g Paradise street, Rotherhithe street
 B h Paradise walk, Paradise row
 E g Paragon, New Kent road
 E g Paragon place, New Kent road
 D c Paris-garden stairs
 B c Paris place, Chapel street
 D f Paris st., West, Stangate st., Lambeth
 E f Parish street, Horsleydown
 C c Park crescent, New road
 B a Park lane, Baker street
 B e Park lane, Piccadilly
 B b Park place, Blandford place
 E h Park place, East lane
 B d Park place, Edgeware road
 E a Park place, Hertford road
 D h Park place, Kennington cross
 A b Park place, Maida hill, West
 A c Park place, Paddington
 C a Park place, Park street
 F b Park place, Regent's canal
 C e Park place, St. James's street
 B b Park place, Upper Baker street
 B a Park place, Upper, Portland town
 C c Park road, Regent's park
 C c Park square, Regent's park
 G c Park street, Back lane
 G c Park street, Bethnal green
 E e Park street, Bridge street
 C a Park street, Camden town
 C f Park street, Dartmouth street
 B b Park street, Dorset square
 G f Park street, Emmett street
 D h Park street, Kennington cross
 B e Park street, Oxford street
 B b Park terrace, Regent's park
 C a Park villa, West, Regent's park
 C a Park village, East, Camden town
 F g Parker's buildings, Grange road
 F g Parker's row, Neckinger road
 D d Parker street, Drury lane
 F b Parker street, Kingsland road
 F c Parliament street, Belvidere place
 C a Parliament street, Camden street
 C f Parliament street, Whitehall
 G e Parnham street, Limehouse
 F f Parson's stairs
 F e Parsons street, Ratcliff highway
 C a Passmore place, Camden town
 H d Patent Cable Manufactory
 D d Paternoster row, Cheapside
 E d Paternoster row, Union street
 F c Patience street, Wheeler street
 F c Patriot row, Cambridge street
 F b Patriot square, Bethnal green
 F e Patriot square, Cannon square
 G d Patters street, Commercial road
 E d Paul's alley, Aldersgate street
 D e Paul's chain, St. Paul's church-yard
 E c Paul square, Paul street
 E c Paul's street, Old-street road
 D e Paul's wharf, Upper Thames street
 B e Pavilion, New road
 D h Peacock street, Newington
 D b Pearl crescent, Old road
 D f Pearl row, Borough road
 F f Pearl street, New Gravel lane
 F d Pearl street, Wheeler street
 F d Pearl street, Great, Wheeler street
 D f Peartree street, Cornwall road
 E c Peartree street, Goswell street
 F b Pearson street, Kingsland road
 A g Pelham crescent, Brompton
 F d Pelham street, Brick lane
 F f Pelican stairs, Wapping
 F e Pell street, Ratcliff highway
 B f Pembroke mews, Grosvenor place
 C g Pembroke place, Pimlico
 C g Penitentiary, Regent street
 F e Pennington street, London docks
 H e Pennyfields street, Dock road
 D h Penton place, Newington
 D b Penton place, Old road
 D h Penton row, Walworth
 D h Penton street, Penton place
 C b Penton street, Winchester place
 D b Pentonville
 D f Pepper street, Union street
 D c Perceval street, St. John-street road
 C d Percy street, Tottenham-court road
 C f Perkin's rents, Tothill fields
 C d Perry's place, Oxford street
 F c Perry's row, Hackney road
 D c Peter's lane, St. John street
 E f Peter street, Bridge street
 D d Peter street, Saffron hill
 C e Peter street, Stanhope street
 E d Peter street, Sun street
 F c Peter street, Tyson street
 C d Peter street, Wardour street
 C g Peter street, Great, Horseferry road
 C g Peter street, Little, Great Peter street
 C g Peter street, New, Horseferry road
 E c Pitfield street, Old-street road
 E d Petticoat lane, Whitechapel
 D f Philanthropic Institution, London rd.
 E d Philip lane, London wall
 F e Philip street, Cable street
 E b Philip street, Kingsland road
 E e Philpot lane, Fenchurch street
 F d Philpot street, Commercial road
 F c Phoenix street, Brick lane
 C b Phoenix street, Clarendon street
 C d Phoenix street, Crown street
 E h Phoenix street, East lane
 B e Piccadilly
 D d Picket street, Temple bar
 E f Pickle-herring street, Tooley street
 D a Pierrepoint buildings, Broadway
 D b Pierrepoint row, Broadway
 A c Pieschell's st. South-wharf rd. Padd.
 D h Pilgrim street, Vauxhall road
 E c Pitfield street, Old-street road
 F g Pitman's place, Grange road
 E c Pitman's row, City road
 E g Pitt place, Kent road
 F c Pitt street, Bethnal green
 E g Pitt street, Kent road
 D g Pitt street, Prospect place
 C c Pitt street, Tottenham-court road
 F g Pitmann's place, Jamaica row
 C c Play-ground, Gordon square
 D e Playhouse-yard, Water lane
 E c Playhouse-yard, Whitecross street
 G c Pleasant place, Grove road

- D g Pleasant place, West square
 F d Pleasant row, Church street
 E h Pleasant row, East lane
 D h Pleasant row, Kennington lane
 F h Pleasant row, Kent road
 E b Pleasant row, Kingsland road
 E a Pleasant row, Lower street
 B c Pleasant row, New road
 D b Pleasant row, Pentonville
 D d Plough court, Fetter lane
 G h Plough lane, Deptford Lower road
 F f Plow lane, Wapping
 F e Plow street, Whitechapel High street
 F d Plumber's row, White-horse street
 E c Plumber street, City road
 C d Plumtree street, Broad st., St. Giles's
 C d Poland street, Oxford street
 F c Pollard's place, Bethnal-green road
 F c Pollard's street, Bethnal-green road
 C b Polygon, Clarendon square
 C d Polytechnic Institution, Regent street
 A g Pond place, Leader street
 E e Pond street, Bankside
 B f Pont street, Sloane street
 E c Pool terrace, Bath street, City road
 E b Poole street, New North road
 E a Popham street, Lower street
 E a Popham terrace, Lower street
 D g Poplar row, New Kent road
 D d Poppin's court, Fleet street
 B c Porchester street, Lower, Oxford sq.
 B c Porchester st., Upper, Cambridge sq.
 A d Porchester terrace, Bayswater
 C d Porter street, Castle street
 E c Porter street, Norton Falgate
 F b Porter's row, Russia lane
 C c Portland place
 E h Portland place, Walworth
 C e Portland road, New road
 G e Portland street, Commercial road
 C c Portland street, Portland road
 E h Portland street, Walworth
 C d Portland street, Wardour street
 C d Portland street, Little, Regent street
 E a Portland terrace, Lower road
 B a Portland terrace, Primrose-hill road
 B a Portland town, St. John's wood
 B d Portman mews, North, Baker street
 B d Portman mews, South, Portman st.
 A a Portman new market, New street
 A c Portman place, Maida vale
 B d Portman square, Baker street
 B d Portman street, Oxford street
 D c Portpool lane, Gray's-inn lane
 D h Portsmouth place, Kennington lane
 D d Portsmouth street, Lincoln's-inn fields
 D d Portugal row, Lincoln's-inn fields
 D d Portugal street, Lincoln's-inn fields
 D g Portugal street, Lambeth walk
 E d Post office, St. Martin's-le-Grand
 E e Postern row, Trinity square
 E g Potier's place, Bermondsey new road
 E g Potier's street, Kent street
 F c Pott street, Bethnal-green road
 E f Potter's fields, Horsleydown
 E c Poultry, Cheapside
 D c Powell's place, Queen square
 E c Powell street, Goswell road
 D c Powis place, Great Ormond street
 D g Pownall place, Walcot place
 A c Praed street, Edgeware road
 C a Pratt place, Fig lane
 D g Pratt street, Church street
 C a Pratt street, King's road
 F e Prescott street, Goodman's fields
 F e Prescott st., Little, Goodman's fields
 E c President street, Goswell road
 D f Price's street, Gravel lane
 B a Primrose-hill road, Regent's park
 F c Primrose street, Bethnal green
 E d Primrose street, Long alley
 D h Prince's buildings, Prince's square
 F f Prince's court, Old Gravel lane
 D h Prince's place, Kennington road
 D g Prince's place, Walcot place
 D h Prince's road, Kennington cross
 E h Prince's row, Walworth
 D h Prince's square, Kennington road
 F e Prince's square, Ratcliff highway
 F f Prince's stairs, Rotherhithe
 C d Prince's street, Barbican
 F d Prince's street, Brick lane
 C g Prince's street, Broad street
 F c Prince's street, Church street
 D e Prince's street, Commercial road
 D d Prince's street, Drury lane
 C d Prince's street, Leicester street
 D d Prince's street, Little Queen street
 D g Prince's street, London road
 E c Prince's street, Lothbury
 A b Prince's street, Maida vale
 C d Prince's street, Margaret street
 F d Prince's street, Mile-end road
 C f Prince's street, Pimlico
 F e Prince's street, Ratcliff highway
 D d Prince's street, Red-lion square
 F g Prince's street, Rotherhithe street
 D c Prince's street, St. John-street road
 G d Prince's street, Stepney green
 F c Prince's street, Tyson street
 D f Prince's street, Union street
 F d Prince's street, Whitechapel road
 E d Prince's street, Wilson street
 F g Printer's place, Jamaica row
 C f Privy gardens, Whitehall
 G a Prospect place, Bromley
 H d Prospect place, Bromley new town
 D c Prospect place, Gray's-inn lane
 E a Prospect place, Islington
 F e Prospect place, Ratcliff highway
 G d Prospect place, Stepney green
 F g Prospect row, Blue-anchor road
 A g Prospect row, Brompton
 F a Prospect row, Kingsland road
 F g Prospect row, Neckinger road
 F b Prospect row, Russia lane
 E g Prospect row, Walworth
 D a Prospect terrace, John street
 E g Providence buildings, New Kent road
 G g Providence island, Commercial docks
 D b Providence row, Battlebridge
 F b Providence row, Cambridge neath
 E c Providence row, Finsbury square
 G b Providence row, Grove road
 E h Providence street, Walworth common
 F e Providence street, White-horse street
 E b Provost street, City road
 E e Pudding lane, Lower Thames street
 D e Puddle-dock hill, Upper Thames st.
 D e Puddle-dock stairs, Up. Thames st.
 D a Pulteney street, Barnsbury road
 C d Pulteney street, Great, Golden sq.

- C d Pulteney street, Little, Golden square
 D a Pulteney terrace, Barnsbury road
 E c Pump alley, Bunhill row
 F c Punderson place, Bethnal-green road
 F d Purim place, Dog row
 D d Pye corner, Giltspur street
 C f Pye street, New, Orchard street
 C f Pye street, Old, Orchard street
 C e Quadrant, Piccadilly
 E c Quaker's burial-ground, Bunhill row
 F d Quaker street, Phoenix street
 C a Quebec street, King street
 B d Quebec street, Oxford street
 B c Quebec street, Great, New road
 B d Quebec street, North, Berkeley street
 F d Queen-Ann street, Ducking-pond row
 B c Queen-Ann street, West, Welbeck st.
 D f Queen's court, Great Suffolk court
 B f Queen's gardens, Brompton
 E a Queen's-head lane, Lower street
 E b Queen's-head walk, Hoxton
 D h Queen's place, Kennington road
 C h Queen's place, Vauxhall walk
 A e Queen's private road, Hyde park
 A f Queen's row, Brompton grove
 F d Queen's row, Dog row
 B g Queen's row, Ebury street
 E b Queen's row, Hoxton
 D h Queen's row, Kennington road
 D b Queen's row, Penton place
 E h Queen's row, Walworth
 C f Queen square, Bird-cage walk
 C f Queen square, Broadway
 F g Queen's square, Rotherhithe street
 D c Queen's square, Upper Guildford st.
 F c Queen street, Brick lane
 F d Queen street, Church street
 B e Queen street, Curzon street
 C d Queen street, Dean street
 E h Queen street, East lane
 B c Queen street, Edgware road
 E f Queen street, Horsleydown
 A h Queen street, King's road
 E f Queen street, King street
 B f Queen street, Knightsbridge
 G e Queen street, London street
 E a Queen street, Lower street
 E f Queen street, Mint street, Borough
 D f Queen street, New cut
 E c Queen street, Old street
 B d Queen street, Oxford street
 D c Queen street, Perceval street
 C f Queen street, Princes street
 G d Queen street, Redman's row
 F e Queen street, Rosemary lane
 F g Queen street, Rotherhithe street
 C d Queen street, Seven dials
 E e Queen street, Upper Thames street
 D f Queen street, Waterloo road
 C e Queen street, Windmill street
 D d Queen street, Great, Drury lane
 B d Queen street, Little, Edgware road
 D d Queen street, Little, High Holborn
 G f Queen street, Lower
 A h Queen's terrace, Queen street
 E c Radnor street, Bath street
 E c Ragged row, Goswell street
 E b Rahere street, Goswell street
 F d Ram alley, Fleet street
 G g Randall's rents
 B g Ranelagh grove, Kemp's row
 B f Ranelagh place, Ranelagh street
 C h Ranelagh road, Millbank
 B h Ranelagh stairs, Chelsea hospital
 A c Ranelagh street, Bishop's road
 B f Ranelagh street, Grosvenor place
 F h Ranger's place, Kent road
 G e Rasbey's row, Narrow street
 G e Ratcliff-cross stairs
 F e Ratcliff highway, Upper Shadwell
 E c Ratcliff row, City road
 G e Ratcliff square, Commercial road
 F e Ratcliff street, Ratcliff highway
 C d Rathbone place, Oxford street
 C d Rathbone place, Upper, Rathbone pl.
 F d Raven street, Oxford street
 D b Rawstone street, St. John-street road
 F d Ray row, Mile-end road
 D c Ray street, Coppice row
 D e Raymond's buildings, Gray's inn
 B g Rayner place, Chelsea
 E d Redcross square, Aldersgate street
 E d Redcross square, Jewin street
 E f Redcross street, Union street
 G h Red-house wharf
 E d Red-lion court, Chiswell street
 F d Red-lion court, Fleet street
 D d Red-lion passage, Red-lion square
 C b Red-lion place, Pancras place
 D d Red-lion square, High Holborn
 F d Red-lion street, Church street
 D c Red-lion street, Clerkenwell green
 D d Red-lion street, Holborn
 F f Red-lion street, Wapping
 F d Red-lion street, Whitechapel High st.
 G d Redman's row, Stepney green
 F f Redriff stairs
 B e Reeve's mews, South-Audley street
 E b Reeve's place, Kingsland road
 D h Regency place, Kennington lane
 E a Regent's canal
 H g Regent's dock, Isle of Dogs
 B a Regent's park
 D c Regent's square, Sidmouth street
 E b Regent's street, City road
 G c Regent's street, Mile-end road
 C d Regent street, Oxford street
 C e Regent street, Pall-mall
 D g Regent's street, Prince's road
 A g Regent's street, Putney road
 C g Regent's street, Vauxhall bridge
 E b Regent's terrace, City road
 E b Regent's terrace, Regent's canal
 E b Rempstone place, New North road
 E g Rephidim st., Bermondsey new road
 C h Retreat, South Lambeth
 D g Retreat, The, Newington
 C b Reservoir, Tottenham-court road
 E d Rhodes's farm, Kingsland road
 G d Rhodes well, Stepney lane
 G d Rhodes-well road, Salmon lane
 H e Rich street, Commercial road
 F g Richard's place, Deptford Lower road
 F e Richard street, Commercial road
 F d Richard street, New road
 D a Richard street, White Conduit street
 E f Richardson street, Long lane
 E h Richmond place, East lane
 E c Richmond street, Bath street
 A b Richmond street, Maida vale
 C d Richmond street, Prince's street
 C f Richmond terrace, Parliament street

- C d Riding-house lane, Gt. Titchfield st.
 D b Riley street, Cromer street
 B e Ring, The, Hyde park
 D a River lane, Lower street
 D b River street, Myddleton square
 E e River street, Trinity square
 D b River terrace, City road
 D e River yard, New Dorset square
 C e Robert street, Adelphi
 H e Robert street, Commercial road
 B d Robert st. Duke street, Grosvenor sq.
 D f Robert street, Great Surrey street
 C b Robert street, Hampstead
 E b Robert street, Hoxton road
 A h Robert street, King's road
 D f Robert street, Lambeth marsh
 D c Robert street, Little James street
 F c Robert street, Wellington row
 D d Robin-hood court, Shoe lane
 E b Robin-hood terrace, Hoxton
 A h Robinson's row, Cheyne walk
 C g Rochester row, Vincent square
 C g Rochester street, Vincent square
 D g Rockingham row, New Kent road
 E g Rodney buildings, New Kent road
 E g Rodney row, New Kent road
 E f Rodney street, Great Suffolk street
 D b Rodney street, Pentonville
 G c Rodney terrace, Bow road
 D h Rogers street, Vauxhall road
 D d Roll's buildings, Chancery lane
 D d Roll's chambers, Chancery lane
 D d Roll's gardens, Chancery lane
 B b Roman-Catholic chapel, Lodge road
 E e Rood lane, Fenchurch street
 G e Ropemaker street, Three-colts' street
 D c Rosamond row, Upper Rosamond st.
 D c Rosamond st. Upper, Wilmington sq.
 G e Rose lane, Commercial road
 F d Rose lane, Wentworth street
 G e Rose place, Globe lane
 E c Rose street, Brick lane
 F c Rose street, Church street
 C d Rose street, Crown square
 C e Rose street, Long-acre
 H e Roselyn place, Dock road
 E a Rosemary branch, Regent's canal
 F e Rosemary lane, Minories
 G d Rosetta street, Stepney
 E f Ross alley, Horsleydown
 E a Rotherfield street, Lower road
 D f Roupell street, Cornwall road
 G d Rowland's row, Stepney green
 C d Roxburgh place, Oxford street
 C e Royal Academy, Trafalgar square
 C d RoyalAcademyof Music, Tenterden st.
 C e Royal Adelphi Theatre, Strand
 D f Royal Amphitheatre, Westminster rd.
 D b Royal Clarence Theatre, Liverpool st.
 D c Royal or Surrey Circus, Blackfrs.rd.
 G h Royal Dock-yard, Deptford
 E e Royal Exchange, Cornhill
 C e Royal Fitzroy Theatre, Tottenham st.
 C e Royal Institution, Albemarle street
 B g Royal Military Asylum, Chelsea
 H i Royal Naval Asylum, Greenwich
 A c Royal Oak, Bishop's road
 D f Royal row, Carlisle lane
 E c Royal row, Old street
 D c Royal Society, Somerset house
 D f Royal Victoria theatre, Waterloo rd.
 B f Royston street, Montpellier square
 H f Rumsey street, West-India docks
 C e Rupert street, Coventry street
 F e Rupert street, Goodman's fields
 C d Rupert street, Little Princes street
 G d Rural place, Mile-end road
 D d Russell court, Drury lane
 C d Russell Instit., Coram st. Russell sq.
 F f Russell's-mill stairs, Rotherhithe st.
 C c Russell place, London street
 C c Russell square
 F d Russell square, Oxford street
 E g Russell street, Bermondsey street
 D d Russell street, Covent garden
 G g Russell street, Greenland dock
 E f Russell street, Great, Bermondsey st.
 C d Russell street, Great, Museum street
 D d Russell street, Little, Covent garden
 C d Russell street, Little, Oxford street
 C g Russell st. Upper, Bermondsey street
 E f Russell street, Upper, Long lane
 F b Russia lane, Hackney road
 A f Rutland house, Knightsbridge
 C b Rutland street, Hampstead
 F d Rutland street, New road
 C e Ryder st., Gt. & Little, St. James's st.
 C e Sackville street, Piccadilly
 D c Saffron hill, Great, Holborn hill
 D c Saffron hill, Little, Great Saffron hill
 A d St. Agnes' villas, Bayswater
 C e St. Alban's pl. Charles st. Haymarket
 D c St. Andrew's bur.-gr., Gray's-inn lane
 C b St. Andrew's place, Regent's park
 E g St. Andrew's road, Horsemonger lane
 E c St. Andrew's st. Little, Seven Dials
 C f St. Ann's lane, Little, Peter street
 G e St. Ann's place, Linehouse
 G e St. Ann's row, Commercial road
 C f St. Ann's street, Great, Orchard street
 D d St. Bartholomew's hosp. W. Smithfield
 E a St. Bartholomew's place, Hertford rd.
 F f St. Catherine's dock
 F e St. Catherine's street, Tower hill
 D b St. Chad's place, Battlebridge
 E e St. Dunstan's alley, Tower street
 E o St. Dunstan's hill, Lower Thames st.
 C a St. George's burial-ground
 B d St. George's bur.-gr., Edgeware rd.
 D c St. George's bur.-gr., Gray's-inn lane
 B e St. George's burial-ground, Mount st.
 B f St. George's hospital, Knightsbridge
 E h St. George's place, Albany road
 B g St. George's place, Chelsea bridge
 D g St. George's road, Lambeth road
 E g St. George's road, New Kent road
 B g St. George's row, Chelsea bridge
 B d St. George's row, Uxbridge road
 G h St. Helena, Deptford Lower road
 D b St. Helena place, Wilmington square
 D b St. Helena terrace, Old road
 E d St. Helen's place, Bishopsgate street
 C b St. James's burial-ground, Hampstead
 C f St. James's palace, Pall-mall
 C f St. James's park
 E e St. James's place, Aldgate
 C e St. James's place, St. James's street
 C e St. James's square, Pall-mall
 C e St. James's street, Piccadilly
 C e St. James's st. Little, St. James's st.
 C e St. James's theatre, King street
 D c St. James's walk, Clerkenwell green

- C f St. John's church-yard, Millbank st.
 D c St. John's lane, St. John's street
 B b St. John's lodge, Regent's park
 D c St. John's square, Clerkenwell green
 D c St. John's street
 F d St. John's street, Brick lane
 D c St. John's-street road, St. John's st.
 B a St. John's-wood farm
 B a St. John's-wood pl., Portland terrace
 B a St. John's-wood terrace, Wellington rd.
 C a St. Katherine-hosp stairs, Regent park
 F f St. Katherine's street, The Tower
 E c St. Luke's hospital, Old street
 E b St. Luke's workhouse, City road
 E f St. Margaret's hill, Borough
 C f St. Margaret's street, Gt. George st.
 C a St. Martin's burial-ground, Pratt st.
 C e St. Martin's court, St. Martin's lane
 C e St. Martin's lane, Charing cross
 E e St. Martin's lane, Upper Thames st.
 C e St. Martin's lane, Litt., St. Martin's lane
 E d St. Martin's le Grand, Newgate st.
 D f St. Martin's street, Friars street
 C e St. Martin's street, Leicester square
 E e St. Mary-at-hill, Lower Thames st.
 E d St. Mary Axe, Leadenhall street
 E e St. Mary stairs
 E f St. Olave's, Tooley street
 D d St. Paul's cathedral
 D d St. Paul's churchyard, Ludgate hill
 E h St. Paul's place, Walworth Common
 D e St. Peter's hill, Upper Thames street
 E h St. Peter's street, Walworth common
 A d St. Petersburg place, Moscow road
 F f St. Saviour's dock
 E e St. Swithin's lane, Lombard street
 E f St. Thomas's hospital, Borough
 F a St. Thomas's place, St. Thomas's sq.
 F a St. Thomas's square, Hackney
 E e St. Thomas's street, Queen's lane
 E f St. Thomas's street, Wellington street
 F d St. Thomas's street, Whitechapel rd.
 G e St. Vincent street, Commercial road
 B c Sale street, Praed street
 A d Salem grove, Black-lion lane
 E g Salisbury crescent, York street
 F g Salisbury lane, Bermondsey wall
 B c Salisbury mews, Great Quebec street
 E g Salisbury place, North street
 D d Salisbury square, Fleet street
 D e Salisbury stairs
 D d Salisbury street, Fleet street
 B b Salisbury street, Great North street
 E b Salisbury street, New North road
 F g Salisbury street, Rotherhithe street
 D e Salisbury street, Strand
 G e Salmon lane, Commercial road
 F d Samuel street, Brick lane
 F e Samuel street, Cable street
 G d Samuel street, Catherine street
 F c Samuel street, Church street
 E h Sarah-Ann street, Walworth
 G g Sarah's place, King's road
 F c Satchell's rents, Church street
 F c Satchwell street, Bethnal-green road
 D g Saunders' place, Union street
 D g Saville place, Lambeth place
 C d Saville row, Mile-end road
 C a Saville row, Regent street
 E h Saville row, Walworth
 D e Savoy street, Strand
 D e Savoy wharf, Strand
 G e Schoolhouse lane, Cock hill
 D c Schoolhouse yard, St. John street
 F c Slater street, Brick lane, Spitalfields
 C e Scotland yard, Whitehall
 F c Scott street, Dog row
 D d Sea-coal lane, Faringdon street
 F c Seal street, Bethnal-green road
 F b Sebright place, Hackney road
 F b Sebright street, Hackney road
 E e Seething lane, Tower hill
 D c Seckford street, St. John street road
 D d Serle street, Lincoln's-inn fields
 D b Sermon lane, Pentonville
 D c Sessions house, Clerkenwell green
 E g Sessions house, Horsemonger lane
 C d Seven dials, Castle street
 F g Seven islands, Rotherhithe
 F e Severn street, Cable street
 E c Seward street, Goswell street
 C b Seymour crescent, Euston square
 D a Seymour place, Islington
 C b Seymour place, New road
 B e Seymour place, Park lane
 E h Seymour place, Walworth
 B c Seymour place, Upper, Crawford st.
 C b Seymour place, West, Euston square
 C b Seymour street, New road
 D d Seymour street, Lower, Portman sq.
 B d Seymour street, Upper, Edgeware rd.
 B c Seymour street, West, Edgeware rd.
 F f Shad Thames, Gainsford street
 G e Shadwell-dock stairs
 G e Shadwell, Lower, Ratcliff cross
 G e Shadwell market, Shadwell
 G e Shadwell, Upper, Ratcliff highway
 B f Shaftesbury terrace, Pimlico
 F e Shakspeare's walk, Upper Shadwell
 G f Sheep-and-dog stairs, Queen street
 F b Sheep lane, Regent's canal
 F c Shepherd's buildings, Bethnal-gr. rd.
 G b Shepherd's court, Shepherd's market
 B e Shepherd's market, Curzon street
 B d Shepherd street, Oxford street,
 E e Sherborne lane, Lombard street
 B a Sherborne street, Blandford square
 E a Sherborne terrace, Skepperton street
 C e Sherrard street, Golden square
 F e Ship alley, Wellclose square
 D g Ship lane, Walcot square
 F f Ship street, Wapping wall
 G f Shipwright street, Queen street
 D d Shire lane, Temple bar
 D d Shoe lane, Holborn hill
 D e Shoemaker row, Bridge street
 E e Shoemaker row, Leadenhall street
 F a Shore place, Well street
 E c Shoreditch, Kingsland road
 E b Shoreditch workhouse, Kingsland rd.
 C d Short's gardens, Drury lane
 D f Short street, New Cut
 F e Shorter street, Wellclose square
 B c Shouldam street, John street
 D b Sidmouth street, Gray's-inn lane
 D b Sidney grove, City road
 F e Sidney place, Commercial road
 D b Sidney place, Goswell road
 A h Sidney place, King's road
 D h Sidney place, Vauxhall road
 F e Sidney square, Henry street
 D b Sidney street, City road

- C b Sidney street, Clarendon street
 F e Sidney street, Commercial road
 G b Sidney street, Grove road
 F d Sidney street, Mile-end green
 D d Silver street, Fleet street
 G c Silver street, Globe lane
 C d Silver street, Golden square
 C d Silver street, High Holborn
 F f Silver street, King street
 G d Silver street, Redman's row
 F d Silver street, Well street
 E d Silver street, Wood street
 F c Simpson's place, East, Hackney road
 E h Sion place, East lane
 F d Sion square, Whitechapel road
 C a Sir H. Taylor's villa, Regent's park
 E e Size lane, Queen street
 E a Skepperton street, Regent's canal
 G h Skinner's buildings, Low. Deptford rd.
 C b Skinner's street, New road
 D c Skinner's street, St. John's street
 D d Skinner street, Snow hill
 B f Sloane square, Sloane street
 B e Sloane street, Knightsbridge
 B g Sloane street, Lower Sloane square
 B f Sloane terrace, Sloane street
 G f Sluice street, Queen street
 D b Small-pox hospital, Battlebridge
 C d Smart's buildings, High Holborn
 G c Smart street, Green street
 C g Smith's almshouses, Vincent square
 E g Smith's buildings, Long lane
 C e Smith's court, Great Windmill street
 E f Smith's rents, Bermondsey street
 B h Smith street, Bethnal-green road
 C f Smith street, Dean's yard
 G d Smith street, Mile-end road
 C b Smith street, Small-pox hospital
 B h Smith street, Little, Chelsea hospital
 D b Smith street, Lower, Northampton sq.
 D b Smith street, Upper, Northampton sq.
 E d Smock alley, Petticoat lane
 E f Snow's fields, Borough
 D d Snow hill, Faringdon street
 C e Society of Arts, Adelphi
 C d Soho square, Oxford street
 D b Soley terrace, Amwell street
 F c Somersford street, Dog row
 C a Somers bridge, Regent's canal
 A d Somers news, Grand Junction street
 F g Somers place, Blue-anchor road
 G d Somers place, Stepney
 C b Somers place, East & West, New road
 A d Somers square, Grand Junction street
 D e Somers street, Back hill
 A d Somers street, Grand Junction street
 C b Somers town
 D e Somerset house, Strand
 F g Somerset place, Deptford Lower road
 E b Somerset street, New North street
 B d Somerset street, Portman square
 F e Somerset street, Whitechapel High st.
 B b South bank, Grove road
 F c South-conduit st., Bethnal-green rd.
 C b South crescent, Euston square
 E d South-Finsbury place, Finsbury sq.
 C h South Lambeth
 C h, D h South-London water-works
 C a South place, Camden town
 D h South place, Kennington road
 A f South place, Kensington
- A g South row, Earl's court
 C b South row, Euston square
 D g South street, Canterbury walk
 E h South street, East lane
 F c South street, Hart's lane
 B c South street, High street
 E d South street, Moorfields
 E a South street, New North road
 B e South street, Park lane
 B g South street, Sloane square,
 D g South street, West square
 B b South villa, Regent's park
 A e South-wharf road, Paddington
 D d Southampton buildings, Chancery lane
 C b Southampton crescent, Seymour st.
 C d Southampton place, Camden town
 C b Southampton place, Euston square
 C c Southampton row, Bloomsbury sq.
 B c Southampton row, Edgeware road
 C b Southampton row, New road
 D d Southampton street, Bloomsbury sq.
 C e Southampton street, New road
 D b Southampton street, Pentonville
 C e Southampton street, Strand
 E e Southwark bridge
 B d Southwark crescent, Oxford square
 A d Southwark place, Gloucester square
 A d Southwick st. Lower, Cambridge st.
 A d Southwick st. Upper, Oxford square
 C a Spann's buildings, Pancras
 E f Sparrick's row, Snow's fields
 C b Speldhurst street, Burton crescent
 F e Spencer street, Back lane
 D b Spencer street, Northampton square
 F d Spicer street, Brick lane
 E d Spital square, Norton Falgate
 E d Spital street, Spital square
 F d Spitalfields market, Union street
 F d Spittle street, Brick lane
 C e Spring gardens, Charing cross
 A d Spring place, Grand Junction street
 A c Spring street, Bishop's road
 B c Spring street, Portman square
 F e Spring street, Upper Shadwell
 D c Spring street, Wilmington square
 C e Spur street, Leicester square
 F c Squeries street, Bethnal-green road
 D d Stable-yard, Great Queen street
 C f Stable-yard, St. James's palace
 E g Stacey place, Star corner
 C d Stacey street, Monmouth street
 C f Stafford place, Buckingham gate
 C f Stafford row, James street
 C d Stafford street, Bond street
 B c Stafford street, Lisson green
 E d Staining lane, Wood street
 D e Stamford street, Great Surrey street
 D e Stamford street, Upper, Waterloo rd.
 D e Stamford street, West, Waterloo road
 E d Staney lane, Petticoat lane
 D f Stangate, Westminster bridge
 E g Stangate builds, Bermondsey new rd.
 C f Stangate stairs
 D f Stangate st. Westminster-bridge rd.
 B e Stanhope gate, Hyde park
 B d Stanhope place, Connaught square
 C b Stanhope place, Mornington crescent
 D d Stanhope street, Clare market
 C b Stanhope street, Cumberland market
 B e Stanhope street, Park lane
 C a Stanhope street, Park street
 C b Stanmore street, Pancras

- D d Staple inn, Holborn hill
 E g Staple street, Long lane
 E g Star corner, Bermondsey street
 A c Star street, Paddington
 F f Star street, Wapping wall
 C h Steel works, Millbank
 E e Steel-yard stairs
 B c Stephen street, Lisson grove
 C d Stephen street, Tottenham-court road
 G d Stepney
 G e Stepney causeway, Commercial road
 G d Stepney Foot-path bridge
 G e Stepney gardens, Commercial road
 G d Stepney green, Mile-end road
 G d Stepney lane, Regent's canal
 E d Steps alley, Petticoat lane
 F b Stone bridge, Regent's canal
 G e Stone stairs, Broad street
 G e Stone stairs, Great
 D d Stone street, Faringdon street
 H h Stone wharf, Greenwich road
 D d Stonecutter's alley, Lincoln's-inn fields
 E f Stonecutter street, Kent street
 D d Stonecutter street, Shoe lane
 D a Stonefield street, Islington
 D f Stone's end, Newington road
 E d Stoney lane, Petticoat lane
 E f Stoney lane, Tooley street
 E f Stoney street, Clink street
 C c Store street, Tottenham-court road
 F d Storey street, Commercial road
 G d Stracey street, Commercial road
 C d Stracey street, High street
 D a Strahan terrace, Chapman st. Islington
 C e Strand, The
 D e Strand lane, Strand
 C e Strand Theatre, Strand
 B d Stratford place, Oxford street
 C e Stratton street, Piccadilly
 C d Streatham street, Charlotte street
 A g Strong's place, Putney
 C f Strutton ground, Orchard street
 E d Stuart street, Union street
 E a Sturt's bridge, Regent's canal
 E b Sturt's lock, Regent's canal
 B g Subscription Shooting-ground
 E e Suffolk lane, Upper Thames street
 C e Suffolk place, Haymarket
 E a Suffolk place, Lower street
 C b Suffolk street, Maiden lane
 F d Suffolk street, New road
 D b Suffolk street, White-conduit street
 D f Suffolk street, Great, Blackman street
 D f Suffolk st. Little, Great Suffolk street
 G c Sugar-loaf lane, Bethnal green
 E e Summer street, Bridge street
 E d Sun alley, Little Moorfields
 E d Sun street, Bishopsgate street
 E h Sun street, East lane
 E c Sun street, Old-street road
 F e Sun-tavern fields, Upper Shadwell
 G h Surrey canal
 F g Surrey place, Deptford Lower road
 E h Surrey place, Kent road
 D f Surrey row, Nelson square
 E h Surrey square, Walworth common.
 D e Surrey stairs
 D e Surrey street, Strand
 D f Surrey street, Great, Blackfriars bridge
 D f Surrey street, Little, Obelisk
 D f Surrey Theatre
 D h Surrey Zoological gardens, Walworth
 B b Sussex place, Regent's park
 F h Sussex place, Lower, Kent road
 E h Sussex place, Upper, Kent road
 C c Sussex street, Pancras street
 F e Sutton street, Commercial road
 C d Sutton street, Crown street
 E f Sutton street, King's street
 D e Sutton street, Waterloo street
 D e Sutton street, Great, Goswell street
 D e Sutton street, Little, Goswell street
 C e Swallow street, Piccadilly
 A d Swan, The, Bayswater
 E d Swan alley, Coleman street
 E c Swan alley, Golden lane
 F f Swan lane, Rotherhithe street
 E g Swan place, Kent road
 F c Swan street, Church street
 E f Swan street, Great Dover street
 E g Swan street, Kent road
 F e Swan street, Minories
 B h Swan walk, Paradise row
 D e Swan yard, Strand
 G g Swing bridge, Commercial road
 D b Swinton street, Old road
 B g Symon's street, Sloane square
 E c Tabernacle row, Royal row
 E c Tabernacle square, Old-street road
 F c Tabernacle walk, Finsbury square
 G f Tan-yard, Long lane
 D c Tash street, Gray's-inn lane
 C c Tavistock place, Tavistock square
 C c Tavistock square
 D e Tavistock street, Covent garden
 C d Tavistock street, Tottenham-court rd.
 F c Teal street, Bethnal-green road
 F b Teale street, Goldsmith's place
 D e Temple, The, Fleet street
 D d Temple bar, Fleet street
 D e Temple chambers, Temple
 D e Temple gardens, Temple
 D e Temple lane, Fleet street
 D e Temple stairs
 F b Temple street, Hackney road
 F c Temple street, North street
 D g Temple street, Prospect place
 F c Tent street, Bethnal-green road
 E d Tenter alley, Little Moorfields
 F h Tenter ground, Blue-anchor road
 E b Tenter row, City road
 C d Tenterden street, Hanover square
 F e Terling st. Sutton st. Commercial rd.
 C e Terrace chambers, Adelphi
 D a Terret's court, Upper street, Islington
 C h Thames parade, Millbank
 E e Thames street, Bankside
 G g Thames street, East-country dock
 E e Thames street, Lower
 E e Thames street, Upper
 F f Thames tunnel, Wapping
 C h Thames wharf
 B d Thayer street, Manchester square
 F c The Hill, St. John street
 D a Theberton street, Upper street
 D c Theobald's road, Red-lion square
 E g Theobald's street, New Kent road
 E h Thirza place, Kent road
 F c Thomas place, Bethnal-green road
 C c Thomas place, Tottenham-court road
 E g Thomas place, York street
 F d Thomas row, Dog row

- F c Thomas street, Bethnal-green road
 F c Thomas street, Brick lane
 F e Thomas street, Church lane
 F c Thomas street, Church street
 E g Thomas street, Kent road
 F b Thomas street, Kingsland road
 B d Thomas street, Oxford street
 E c Thomas street, Shad Thames
 D e Thomas street, Stamford street
 D f Thomas street, Waterloo road
 C d Thorney street, Plumtree street
 C e Thornhaugh street, Tottenham-ct. rd.
 D a Thornhill's bridge, Regent's canal
 D a Thornhill's place, Regent's canal
 D a Thornhill street, Battle-bridge road
 E f Thornton street, Dockhead
 F d Thrawl street, Brick lane
 E e Threadneedle street, Cornhill
 F c Three-colt lane, Hare street
 G e Three-colt street, Dock road
 E e Three-cranes' wharf, Up. Thames st.
 E f Three-oak lane, Thomas street
 E d Throgmorton street, Lothbury
 E h Thurlow place, East lane
 F b Thurlow place, Hackney road
 D f Thurlow street, Nelson square
 B c Titchborne street, Edgeware road
 F b Tile-kiln, Goldsmiths' almshouses
 B e Tilney street, Park street
 E c Tindal's burial-ground, Bunhill row
 C d Titchfield street, Oxford street
 E d Tokenhouse yard, Lothbury
 C b Tonbridge place, New road
 C b Tonbridge street, Cromer street
 E f Tooley crescent, Tooley street
 E f Tooley gardens, Tooley street
 E e Tooley stairs
 E f Tooley street, London bridge
 C c Torrington square
 C c Torrington street, Keppel street
 C f Tothill street, Broadway
 D c Tothill street, Laystall street
 C f Tothill street, New, Broadway
 C c Tottenham court, Tottenham-ct. road
 C c Tottenham-court road, Oxford street
 C c Tottenham place, Tottenham-ct. road
 C c Tottenham street, Tottenham-ct. road
 G e Totton street, Stepney
 E e Tower-hill, Great, Tower
 E e Tower-hill, Little, Tower
 E e Tower of London
 E e Tower royal, Queen street
 E e Tower stairs, Tower
 C d Tower street, Little Andrew's street
 D f Tower street, Westminster road
 E e Tower street, Great
 E e Tower st. Little, Great Tower street
 E f Town hall, Wellington street
 E e Townsend lane, Upper Thames st.
 E g Townsend street, Kent road
 B b Toxophilite Society, Regent's park
 A f Trafalgar place, Kensington
 E g Trafalgar place, Lock's fields
 G d Trafalgar square, Alfred street
 C e Trafalgar square, St. Martin's lane
 E h Trafalgar street, Walworth
 E e Traitors' gate, Tower
 C f Treasury, Whitehall
 C g Trellick terrace, Windsor terrace
 B f Trevor square, Knightsbridge
 D e Trig lane, Upper Thames street
 D e Trig stairs, Upper Thames street
 D a Trinidad place, Islington
 F d Trinity almshouses, Mile-end road
 E e Trinity lane, Bread street
 E e Trinity lane, Little, Bread street
 E e Trinity square, Tower hill
 E g Trinity square, Trinity street
 G e Trinity stairs, Broad street
 E g Trinity street, Blackman street
 G f Trinity street, Commercial docks
 G h Trundley's lane, Deptford
 F f Trusan lane, Wapping
 D e Tudor street, Bridge street
 C g Tufton street, Dean's yard
 E d Tun alley, Petticoat lane
 D b Tunnel, Pentonville
 F f Tunnel, Rotherhithe street
 F c Tapp street, Dog row
 B g Turk's row, Chelsea hospital
 F c Turk street, Tyson street
 F c Turk street, Whitechapel road
 D d Turnagain lane, Skinner street
 E b Turner's place, Regent's canal
 F f Turner's row, Salmon lane
 E b Turner's square, Gloucester row
 F d Turner's street, Commercial road
 F e Turner's street, New road
 D f Turnmill street, Coppice row
 D d Turnstile, Great, Holborn
 D d Turnstile, Little, Lincoln's-inn fields
 E e Turnwheel lane, Cannon street
 B h Turpentine lane, Millbank
 F c Turville street, Church street
 G c Twig folly, Regent's canal
 C h Tyers street, Workhouse lane
 C d Tyler street, King street
 F c Tyrell street, Bethnal-green street
 F c Tysen street, Bethnal-green road
 D c Tysoe street, Wilmington square
 F c Tyson street, Church street
 B c Ulster street, New road
 B c Ulster terrace, Regent's park
 F d Underwood street, Waterloo town
 F d Underwood street, Whitechapel road
 F f Unicorn yard, Tooley street
 F c Union buildings, Hackney road
 E f Union court, Blackman street
 F c Union crescent, Union street
 D g Union place, Church street
 E c Union place, City road
 D g Union place, High street
 D b Union place, Maiden lane
 D g Union place, Walworth
 E h Union road, Albany road
 E g Union road, Trinity square
 F c Union row, Bethnal-green road
 E g Union row, New Kent road
 G d Union row, Stepney green
 F f Union stairs, Wapping
 F c Union street, Bethnal-green road
 D e Union street, Bridge street
 E f Union street, Borough
 C b Union street, Clarendon square
 F e Union street, Cornwall street
 E h Union street, East lane
 C c Union street, Great Titchfield street
 D f Union street, Gravel lane
 E c Union street, Kingsland road
 D g Union street, Lambeth wall
 D b Union street, Myddleton square
 F d Union street, Mile-end road

- F f Union street, New Gravel lane
 E b Union street, Nile street
 D g Union street, St. George's road
 B e Union street, South-Audley street
 E d Union street, Sun street, Bishopsgate
 D f Union street, Waterloo road
 F d Union street, Whitechapel road
 D g Union street, Great, Borough
 E c United brew-house, Bridge street
 C c University street, Tottenham-ct. road
 E g Upper Bland street, Great Dover st.
 B d Upper Frederick street, Edgware rd.
 D a Upper street
 A d Uxbridge road, Hyde park
 D f Valentine row, Great Surrey street
 E b Vaugh terrace, Regent's canal
 C h Vauxhall
 C h Vauxhall bridge
 C g Vauxhall-bridge road
 C h Vauxhall gardens
 C h Vauxhall place
 C h Vauxhall road
 C h Vauxhall stairs
 D h Vauxhall street, Vauxhall road
 C h Vauxhall terrace, Vauxhall walk
 C h Vauxhall walk
 D d Vere street, Clare market
 B d Vere street, Oxford street
 C a Veterinary college, Pancras
 A d Victoria gate, Kensington
 G d Victoria place, Mile-end road
 A e Victoria road, Kensington
 D f Victoria theatre, Waterloo road
 E g Victory place, New Kent road
 G h Victualling office, Office row
 G h Victualling-office row, Deptford
 C e Vigo street, Regent street
 E h Villa row, Walworth common
 E h Villa street, Walworth common
 C e Villiers street, Strand
 C g Vincent square
 E e Vincent street, Old-street road
 C g Vincent street, Vincent square
 E e Vine street, America square
 C d Vine street, Broad street
 C g Vine street, Millbank street
 D c Vine street, Saffron hill
 G e Vine street, Stepney
 F d Vine street, Wheeler street
 D f Vine street, York road
 E f Vine yard, Tooley street
 G e Vinegar lane, Back road
 E f Vinegar yard, Bermondsey street
 D d Vinegar yard, Drury lane
 F d Vintners' almshouses, Mile-end road
 F c Violet street, Bethnal green
 F c Virginia street, Castle street
 D a Vittoria street, Pentonville
 G d Wade's place, Mile-end road
 D e Wakefield street, Henrietta street
 E e Walbrook, Mansion-house street
 E b Walbrook row, New North road
 F a Walcot place, Hackney
 D g Walcot place, Lambeth road
 D g Walcot terrace, Lambeth road
 F a Walburg street, New road
 E g Walk street, Long lane
 D f Wall workhouse, New Cut
 C b Waller's place, Pancras
 F b Wallis street, Hackney road
 D g Walnut-tree walk, Walcot place
 E h Walworth
 E h Walworth common, Walworth
 D h Walworth place, Walworth
 F f Wapping
 F f Wapping-dock stairs
 F f Wapping new-dock stairs
 F f Wapping old-dock stairs
 F f Wapping wall
 F c Ward's row, Bethnal-green road
 C d Wardour street, Oxford street
 D c Warner street, Cold-bath fields
 E g Warner street, Union crescent
 C a Warren place, Camden town
 C a Warren street, Camden town
 C c Warren street, Fitzroy square
 D d Warwick court, Holborn
 D d Warwick lane, Newgate street
 D d Warwick place, Bedford row
 C g Warwick square, Grosvenor road
 C e Warwick street, Pall-mall
 C d Warwick street, Regent street
 C g Warwick street, Vauxhall-bridge rd.
 E f Water alley, Broadway
 D e Water lane, Earl street
 D d Water lane, Fleet street
 E e Water lane, Lower Thames street
 D e Water street, Arundel street
 D e Water street, Bridge street
 E f Water street, Broadway
 D e Waterloo bridge
 C e Waterloo place, Pall-mall
 F b Waterloo place, Regent's canal
 D f Waterloo road
 G e Waterloo street, Commercial road
 F a Waterloo street, Kingsland road
 G a Waterloo terrace, Hackney
 F b Waterloo terrace, Regent's canal
 D e Waterman's lane, Temple
 D e Waterman's stairs
 E e Watling street, St. Paul's church-yard
 F e Watney street, Commercial road
 F d Weaver street, Spicer street
 E g Webb street, Bermondsey new road
 E f Webb street, Bermondsey street
 E h Webb street, Portland street
 D f Webber row, Webber street
 D f Webber street, Waterloo road
 D f Webber street, Westminster road
 B e Welbeck street, Oxford street
 B d Welbeck street, Little, Welbeck street
 D c Welch charity school, Gray's-inn lane
 F f Well alley, Wapping
 C d Well mews, Well street
 G g Wells's ship-yard
 F d Well street, Brick lane
 F e Well street, Cable street
 D c Wells street, Gray's-inn lane
 G a Well street, Hackney
 C e Wells street, Jernyn street
 E d Well street, Jewin street
 C d Wells street, Oxford street
 F e Wellclose square, Rateliff highway
 C b Wellesley place, Euston square
 A h Wellesley street, King's road
 B f Wellington cricket-ground Cadogan st.
 B e Wellington monument, Hyde park
 F c Wellington place, Hackney road
 G d Wellington place, Stepney
 C g Wellington place, Vincent square
 B a Wellington road, Park road
 F c Wellington row, Hackney road

- E f Wellington street, Borough
 C a Wellington street, Camden town
 D b Wellington street, Collyer street
 F d Wellington street, Dog row
 E c Wellington street, Goswell street
 D f Wellington street, Great Surrey st.
 C g Wellington street, New Bridewell
 A h Wellington street, Queen street
 D c Wellington street, Sidmouth street
 D e Wellington street, Strand
 B a Wellington terrace, Wellington road
 E c Wenlock street, Brick lane
 E b Wenlock road, City road
 F d Wentworth street, Petticoat lane
 F b Werner place, Hackney road
 D d West-Harding street, Fetter lane
 C e West-India club, St. James's street
 E e West-India house, Fenchurch street
 F g West lane, Rotherhithe
 F f West-lane stairs
 D g West square, St. George's road
 E c West street, Baker street
 C d West street, Carnaby street
 C d West street, Grafton street
 G c West street, Green street
 E f West street, Long lane
 D d West street, West Smithfield
 D g West street, West square
 A c Westbourne grove, Bishop's road
 B g Westbourne place, Sloane square
 A c Westbourne road, Bishop's road
 A d Westbourne street, Great-Junction st.
 B g Westbourne street, Grosvenor row
 A d Westbourne terrace, Gt. Junction st.
 G e Westham reservoir
 C f Westminster abbey
 C f Westminster bridge
 C g Westminster gas-works
 C f Westminster hall, New Palace-yard
 C f Westminster Infirmary
 C f Westminster lying-in hospital
 D f Westminster road, Borough road
 C g Westminster scholars' play-ground
 C f Westminster sessions-house
 C f Westminster stairs
 E d Westmoreland buldgs. Aldersgate st.
 E b Westmoreland place, City road
 F b Westmoreland street, Kingsland road
 B c Westmoreland street, Weymouth st.
 C b Weston place, Battlebridge
 D b Weston street, Old road
 C b Weston street, Skinner street
 E f Weston street, Snow's fields
 G d Westover street, Trafalgar square
 E g Weymouth street, New Kent road
 E b Weymouth street, New North road
 E c Weymouth street, Portland place
 F b Weymouth terrace, Hackney road
 D b Wharton street, Old road
 E f Wheeler's lane, Tooley street
 F d Wheeler street, Norton Falgate
 C g Wheeler street, Penitentiary
 D d Whetstone park, Holborn
 D c Whiskin's street, St. John-street road
 C e Whitcomb street, Leicester square
 D d White's alley, Chancery lane
 E d White's alley, Coleman street
 F b White-bear gardens, Hackney road
 F d Whitechapel High st. Whitechapel rd.
 F d Whitechapel road
 D b White-conduit house, White-cond. st.
 D a White-conduit lane
 D a White-conduit street, Pentonville
 D c Whitecross street, Old street
 E f Whitecross street, Union street
 D d Whitecross-st. prison, Whitecross st.
 E f White's grounds, Bermondsey street
 D h White-hart place, Kennington lane
 D h White-hart row, Kennington road
 C g White-hart stairs, Fore street
 D d White-hart yard, Drury lane
 G e White-horse lane, Commercial road
 G d White-horse lane, Stepney
 G e White-horse place, Commercial road
 F e White-horse street, Commercial road
 G e White-horse street, Commercial road
 B e White-horse street, Piccadilly
 F e White's lane, Rosemary lane
 B h White-lead man, Turpentine lane
 C h White-lead works, Millbank
 B g White-lion street, Chelsea
 E d White-lion street, Norton Falgate
 D b White-lion street, Penton street
 F e White-lion street, Rosemary lane
 F d White's row, Ducking-pond row
 B g White stiles, King's road
 E c White street
 F c White street, Bethnal-green road
 E d White street, Bishopsgate
 E f White street, Long lane
 C d White street, Seven Dials
 E c White's yard, Golden lane
 D e Whitefriars dock
 C e Whitehall
 C e Whitehall place, Whitehall
 C e Whitehall stairs, Whitehall
 A g Whitehead's grove, Old Brompton
 E b Whitmore place, Hoxton road
 E b Whitmore road, Hoxton road
 E b Whitmore street, Hoxton road
 C b Whittleborough street, Drummond st.
 D h Wickham street, Jonathan street
 E d Widegate street, Bishopsgate street
 B d Wigmore street, Welbeck street
 A a Wilbury place, Grove end
 D d Wild court, Drury lane
 D d Wild passage, Drury lane
 E g Wild's rents, Long lane
 E g Wild's street, Long lane
 D d Wild street, Great, Drury lane
 D d Wild street, Little, Great Wild street
 B g Wilderness row, Chelsea hospital
 D c Wilderness row, St. John street
 F d Wilkes street, Quakers street
 B c William st. Manchester square
 E h William place, Walworth common
 C b William street, Albany street
 E c William street, Bethnal-green road
 D e William street, Bridge street
 E b William street, Canal road
 D f William street, Charlotte street
 B c William street, Devonshire street
 D c William street, Gray's-inn lane
 D f William street, Great Suffolk street
 G c William street, Green street
 B a William street, Portland town
 C f William street, James street
 D h William street, Kennington road
 D f William street, Lambeth marsh
 D b William street, Margaret street
 C b William street, Mary street
 D f William street, Nelson square
 E g William street, New Kent road
 E a William street, New North road

- F e William street, Commercial road
 E g William street, Paragon, Kent road
 B a William street, Portland town
 E c William street, Shoreditch
 G d William street, Stepney
 C e William street, Strand
 D g William street, Union street
 D f William street, Waterloo road
 H h Willow-bridge stairs, Isle of Dogs
 G d Willow street, Globe lane
 C g Willow street, Vincent square
 E g Willow walk, Blue-anchor road
 E c Willow walk, Curtain road
 B g Willow walk, Vincent square
 F e Wills street, Upper, East Smithfield
 D c Wilmington square, Old road
 F c Wilmot's folly, Bethnal-green road
 F c Wilmot's grove, Wilmot's square
 F c Wilmot's square, Bethnal-green road
 F c Wilmot's street, Bethnal-green road
 D c Wilmot street, Bernard street
 E b Wilnot street, Kingsland road
 E d Wilson street, Finsbury circus
 D c Wilson street, Gray's-inn road
 E c Wilson street, Old-street road
 C b Wilstead street, New road
 B f Wilton crescent, Belgrave square
 B t Wilton place, Knightsbridge
 C g Wilton road, Grosvenor basin
 C g Wilton street, Earl street
 B f Wilton street, Lower Belgrave street
 E a Wiltshire place, Regent's canal
 B c Wimpole mews, Wimpole street
 B c Wimpole street, Weymouth street
 B c Wimpole st. Upper, Devonshire street
 E b Winborne street, New North road
 D b Winchester place, Penton street
 D b Winchester street, Battle-bridge
 F c Winchester street, Bethnal green
 E d Winchester street, London wall
 E f Winchester street, Stoney street
 E d Winchester street, Little, Broad st.
 D d Windmill court, Drury lane
 G h Windmill lane, Deptford Lower road
 D h Windmill street, Church street
 E c Windmill street, Finsbury square
 C d Windmill street, Tottenham-court rd.
 C e Windmill street, Great, Piccadilly
 C d Windmill street, Little, Silver street
 E c Windsor place, City road
 C g Windsor place, Francis street
 E a Windsor street, Lower street
 E b Windsor terrace, City road
 C g Windsor terrace, Vauxhall-bridge rd.
 C d Winslow street, Oxford street
 C b Woburn buildings, Burton crescent
 E h Woburn place, Kent road
 C c Woburn place, Tavistock square
 C b Woburn place, Upper, Tavistock sq.
 C c Woburn square, Russell square
 C d Woburn street, Great Russell street
 F b Wolverley place, Hackney road
 F b Wolverley street, Hackney road
 E h Wood's buildings, East lane
 F c Wood's court, Church row
 B d Wood's mews, Park lane
 F d Wood street, Brick lane
 E d Wood street, Cheapside
 D c Wood street, Coppice row
 D b Wood street, Cromer street
 F c Wood street, Hare street
 C g Wood street, Millbank
 B g Wood street, Pimlico
 D c Woodborough street, St. John street
 D c Woodbridge street, Clerkenwell
 F a Woodstock place, Kingsland road
 B c Woodstock street, Nottingham street
 B d Woodstock street, Oxford street
 D f Wootton street, Cornwall road
 E f Worcester street, Union street
 G e Workhouse, White-horse street
 D g Workhouse lane, Kennington
 G d World's end, Stepney
 E e Wormwood st. Bishopsgate st. within
 E c Worship street, Curtain road
 F g Wright's buildings, Grange row
 B c Wyndham place, Bryanston square
 B c Wyndham street, Upper York street
 D d Wych street, Drury lane
 E g Wycombe place, Kent street
 D b Wynyatt street, St. John street road
 D c Yardley street, Wilmington square
 B c York buildings, New road
 D a York buildings, Upper street
 E h York buildings, Walworth
 C e York-buildings stairs
 B c York gate, Regent's park
 B h York hospital, Chelsea
 C f York house, St. James's park
 B c York mews, Gloucester street
 B c York place, Baker street
 D b York place, City road
 E c York place, City road
 G c York place, Mile-end road
 B c York place, New road
 C g York place, Pimlico
 G d York place, Stepney lane
 D g York place, Walcot place
 E h York place, Walworth
 D b York place, Winchester street
 D f York road, Westminster bridge
 D h York row, Kennington road
 C b York square, Albany street
 G e York square, Limehouse
 E g York street, Bermondsey street
 E c York street, Church street
 E c York street, City road
 C c York street, Cleveland street
 F d York street, Commercial road
 G g York street, East-country dock
 G c York street, Globe lane
 D f York street, Great Surrey street
 B f York street, Hans place
 C e York street, Jermyn street
 F b York street, Kingsland road
 D b York street, Old road
 E g York street, Paragon
 F f York street, Rotherhithe street
 C e York street, Tavistock street
 E h York street, Walworth
 E f York street, Wellington street
 F d York street, White-horse street
 B c York street, York place
 D f York street, York road
 G e York street, East, York square
 B c York street, Upper, Gloucester place
 G e York street, West, York square
 F a York terrace, Kingsland road
 B c York terrace, Regent's park
 G e York terrace, White-horse street
 B c Yorkshire Stingo, New road
 A e Young street, Kensington
 B a Zoological gardens, Regent's park
 D h Zoological gardens, Walworth

