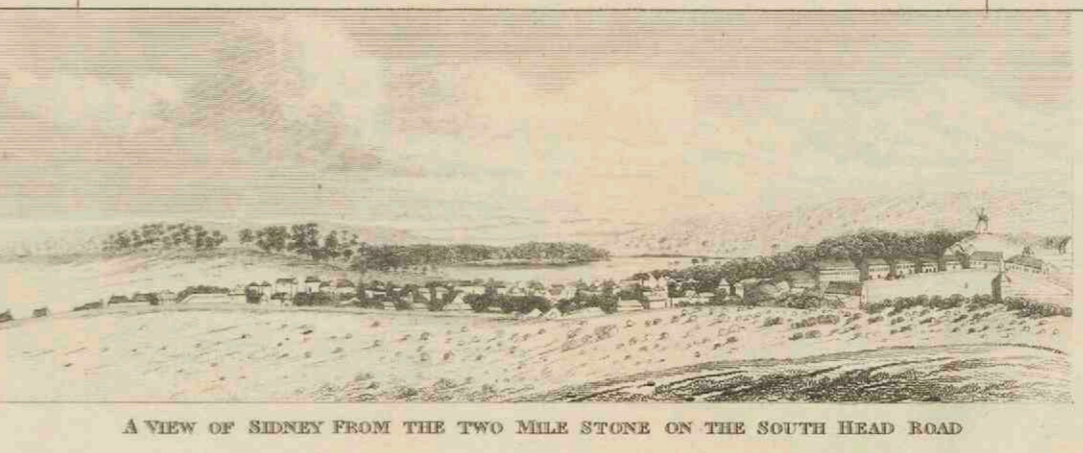
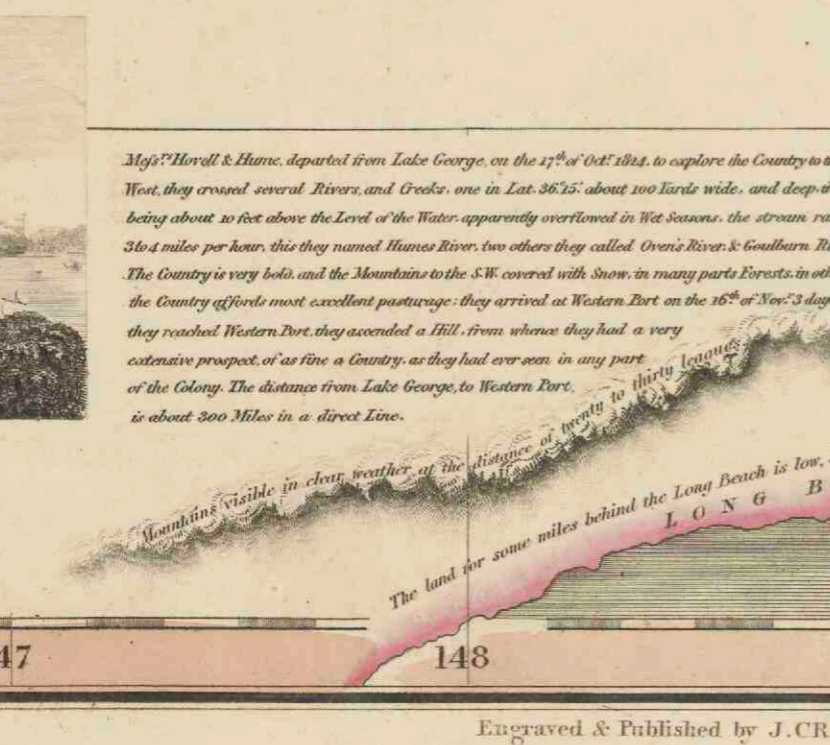
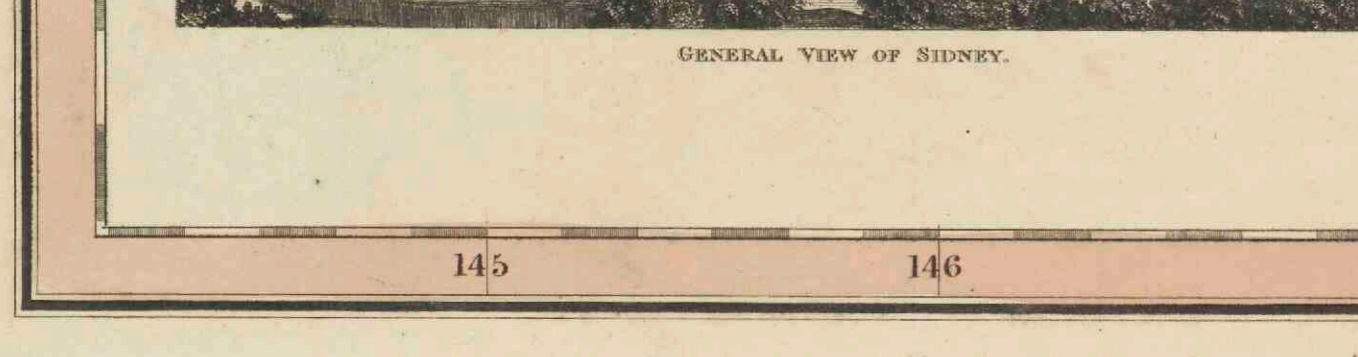
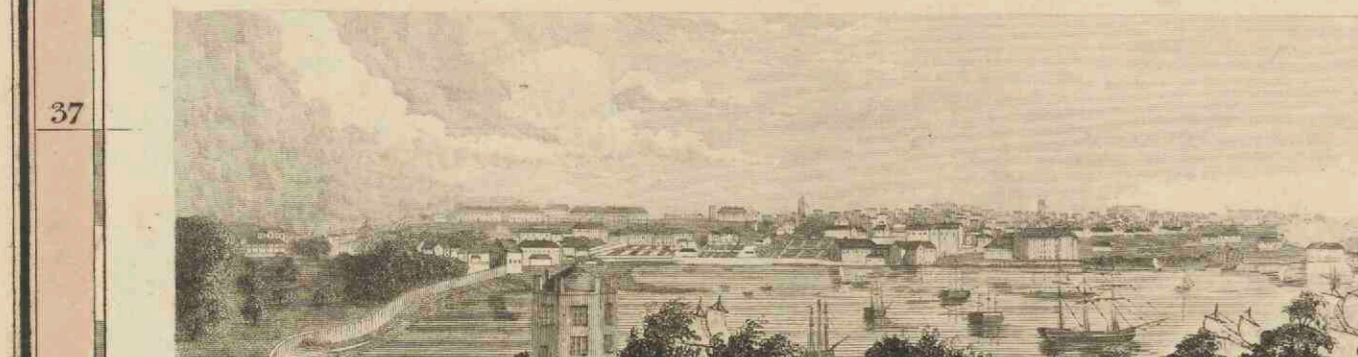
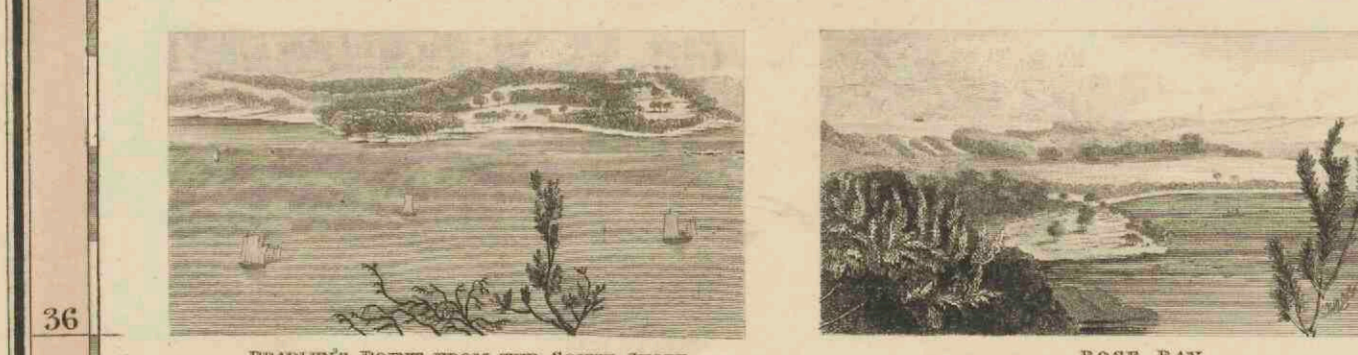
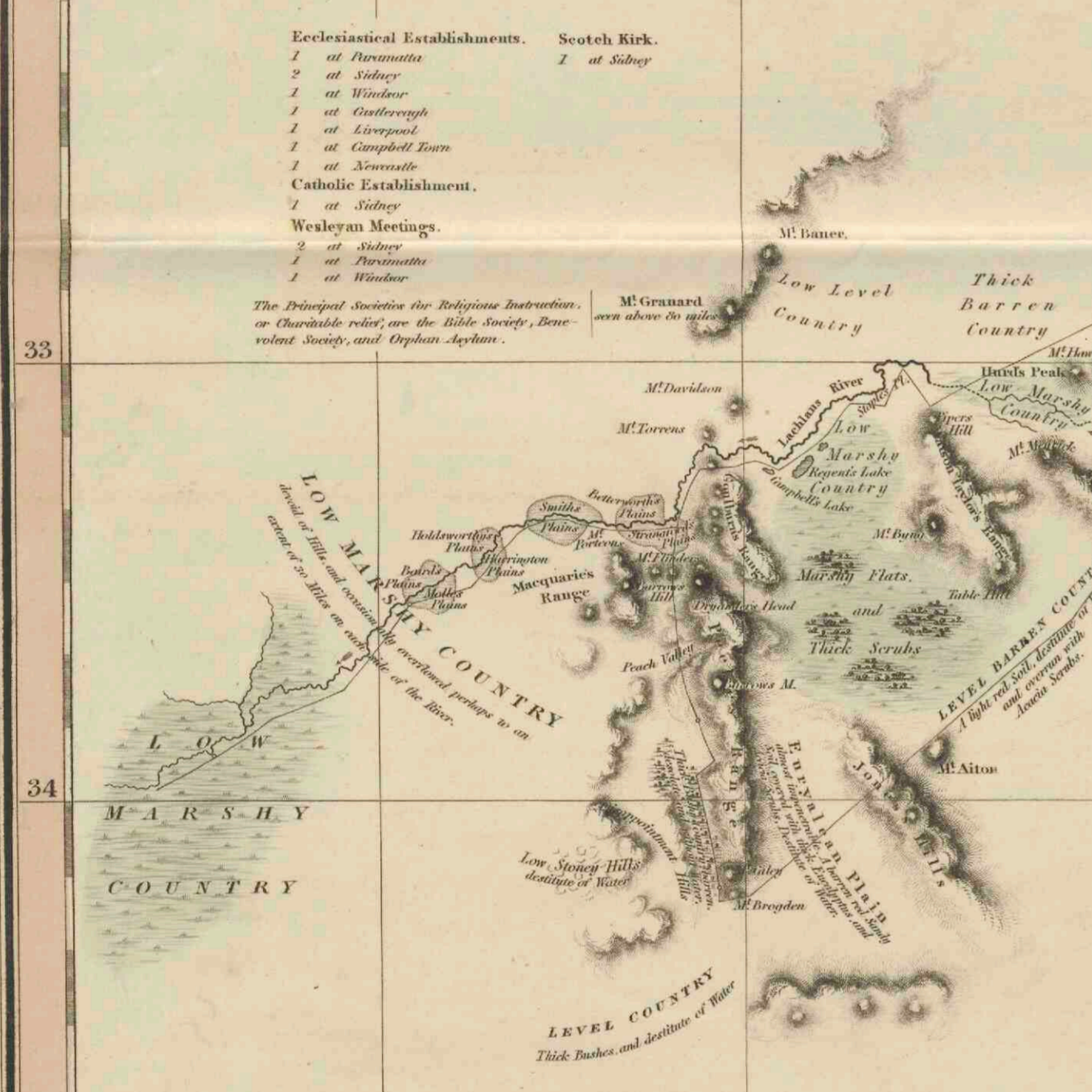
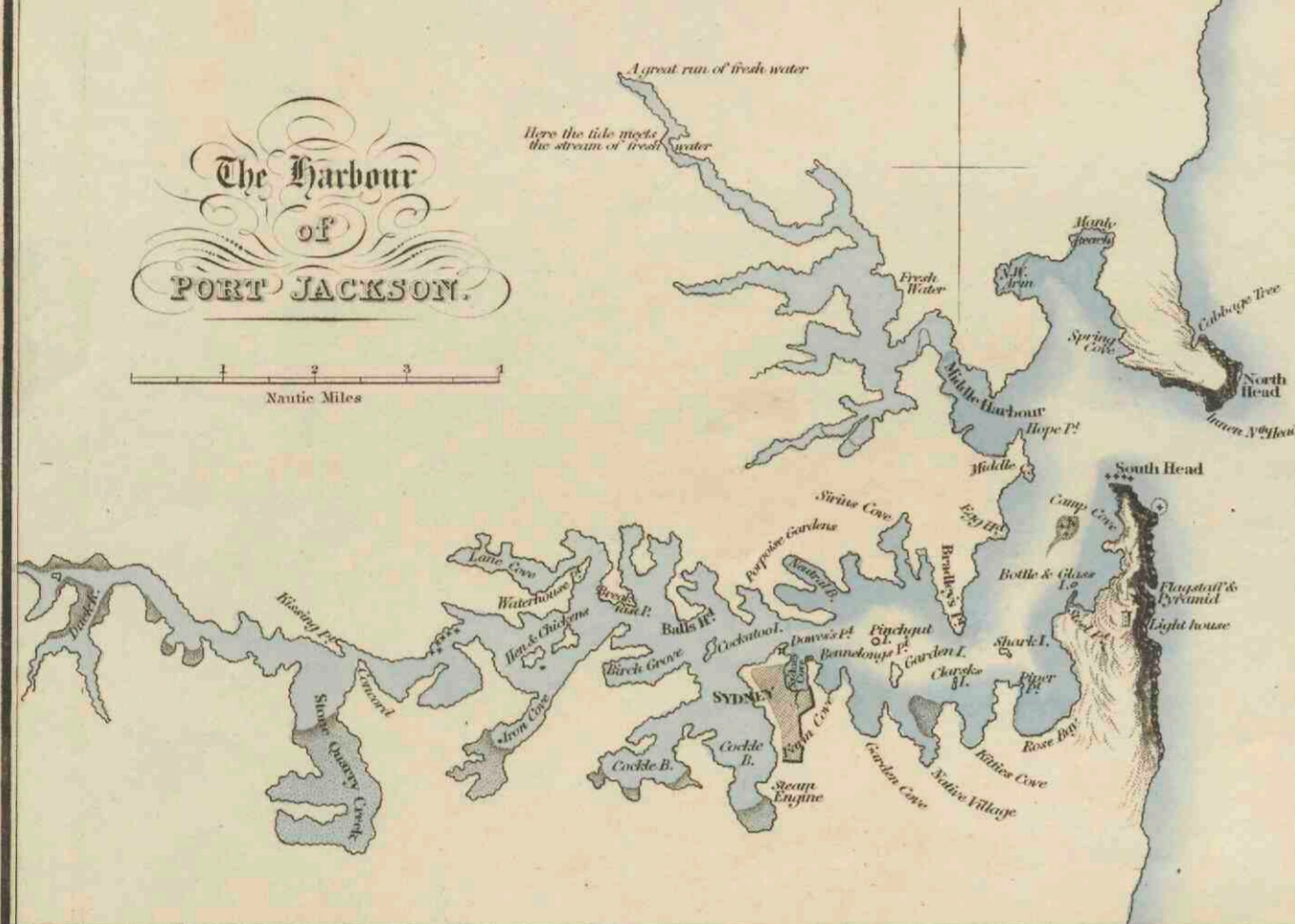
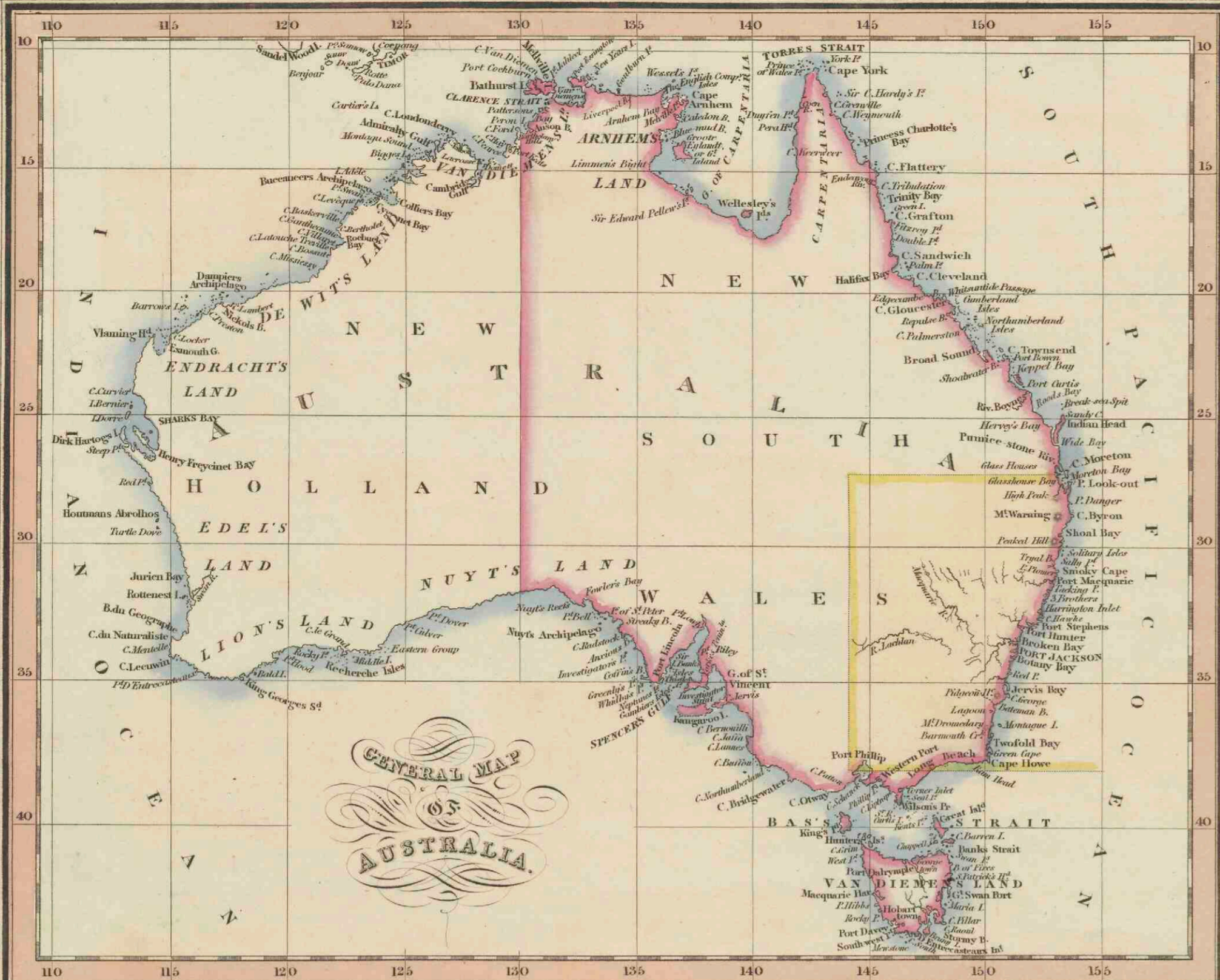




# Map of part of New South Wales, embellished with views in the harbour of Port Jackson

<https://hdl.handle.net/1874/374840>



The Wood of N.S. Wales, has been used in the construction of Island Forts, and their species of it, namely The Iron Bark, Black but not Iron Bark, and others are found in the very small parts of the Island and its vicinity. The peculiar qualities of these Woods are American, Canadian, and Swedish. The Wood of N.S. Wales, though inferior to the best English Oak, is likely to find a ready market in the different parts of Java.

The River Lachlan whose course is between 1 and 2 miles from the sea, is a single stream in addition to two very small ones which branch off to the westward of the river. The water of the river is very pure and is fit for drinking. The river is very deep and is fit for navigation. The country through which it passes is very fertile and generally a light red sandy soil, and the trees and the shrubs which grow in it are the same as in the neighbourhood of the river.

Mrs. Macleay & Co. departed from Lake George on the 17th of 1811, to explore the Country to the South West they crossed several Rivers and Creeks, one in Lat. 36° 30' about 100 miles wide, and deep the banks being about 100 feet above the Level of the Water, apparently overflowed in 1811. The stream ran from the N. E. to the S. W. they crossed several Rivers, two others they called Green River & Condamine River. The Country is very fertile and the Mountains are of a low nature with some very high peaks. In the upper part of the Country several small islands were seen. They arrived at Western Port on the 25th of Nov. 3 days before they reached Western Port they anchored in a Bay, where they had a very extensive prospect of the Bay & Country as they had never seen in any part of the Bay. The distance from Lake George to Western Port is about 100 miles in a direct line.

**Map of part of NEW SOUTH WALES**  
 Embellished with Views in the Harbour of Port Jackson  
 Dedicated to Capt. R. R. King, R. N.  
 By His Highness's Command  
 J. T. Cross