



# **Moteta et psalmi : a III. IV vocibus cum instrumentibus**

<https://hdl.handle.net/1874/427082>

Gisl. Noé

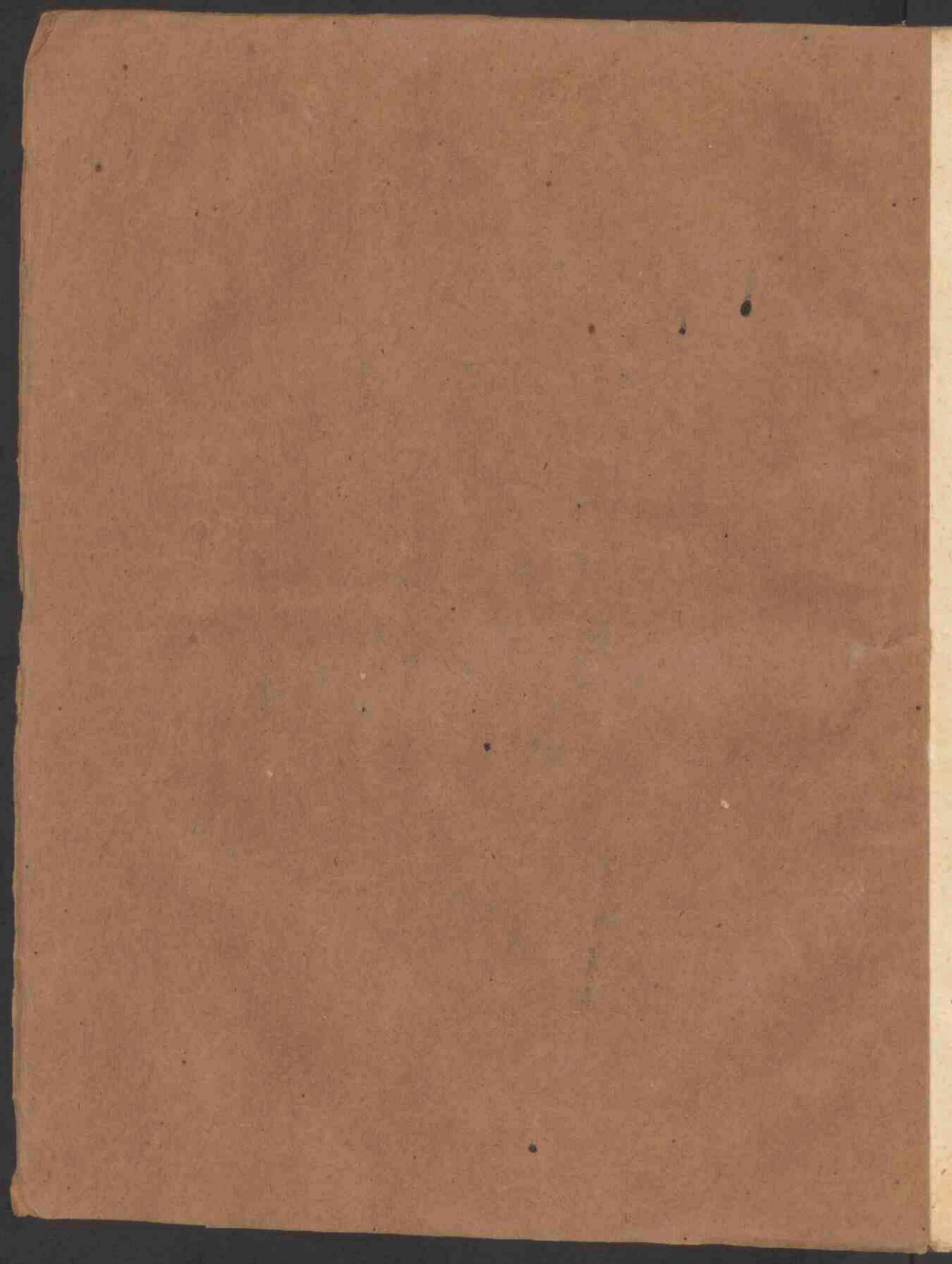
Motets et psalmi



Violino primo 3 d 252.

Auto. 1643

haec. P. Phalasin.



M O T E T A

ET

P S A L M I

A III. IV. VOCIBVS CVM  
INSTRVMENTIS.

A V C T O R E

D<sup>OM.</sup> G I S L E N O

D O R É.

V I O L I N O P R I M O.



ANTVERPIÆ,

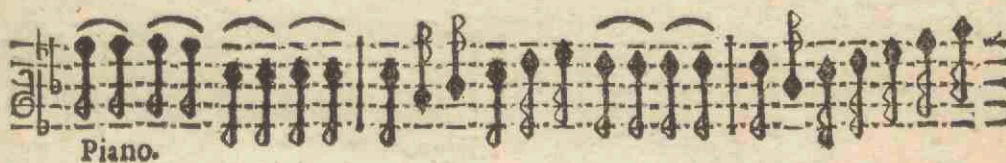
Apud Hæredes PETRI PHALES II, Typographi Mufices. 1673.

M O T T O  
P S A L M I  
A L I I V V O C I O N E S  
I N T R O I T U S  
L U C I O S I  
D O M I N I  
V I O L I N O P R I M O

ANTWERP  
GODWIN & TERHAEGHE



Pueri.



Piano.



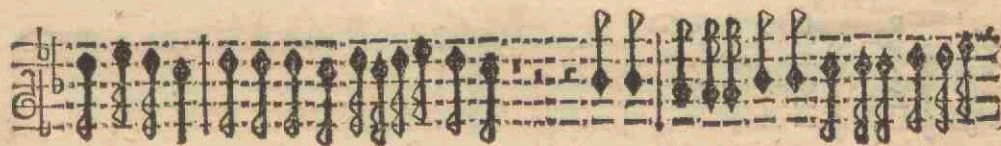
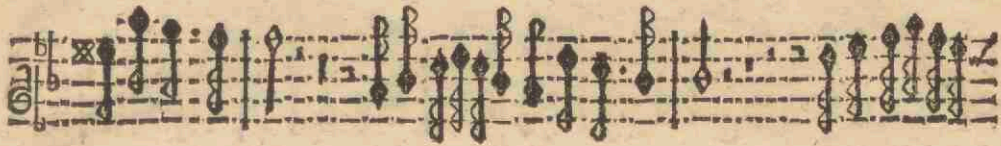
Piano



VIOLINO I.

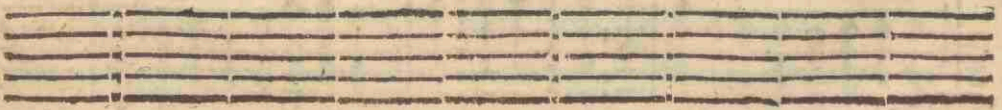
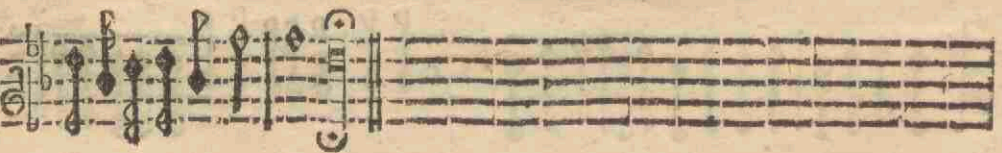
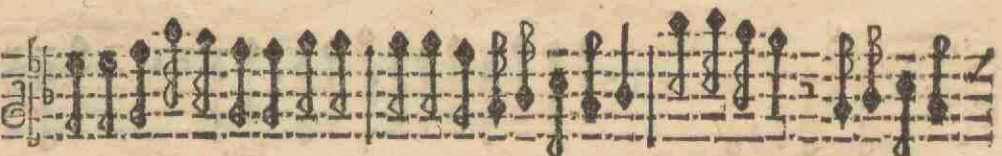
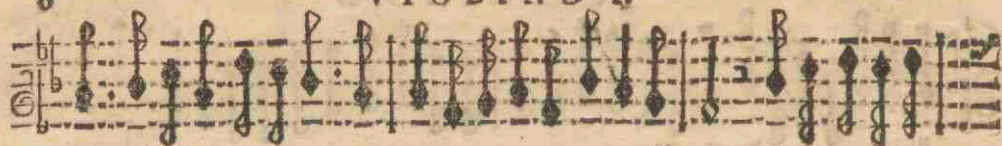
This musical score for Violino I consists of eight staves of music. The first staff begins with a treble clef, a key signature of one flat (B-flat), and a common time signature (C). The music is marked with a piano dynamic (P) and features a series of sixteenth-note patterns. The second staff continues this pattern, also marked piano. The third and fourth staves maintain the sixteenth-note texture. The fifth staff introduces a change in tempo, marked 'Allegro', and continues the sixteenth-note patterns. The sixth, seventh, and eighth staves conclude the piece with similar rhythmic motifs. The manuscript shows signs of age, including some ink bleed-through and minor staining.

VIOLINO I.

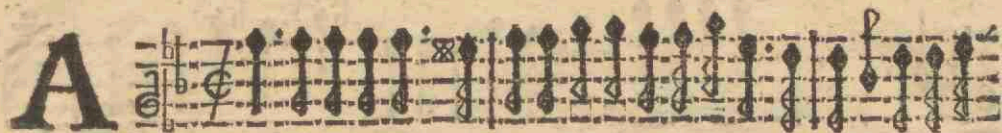




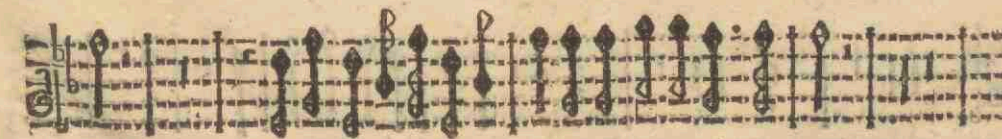
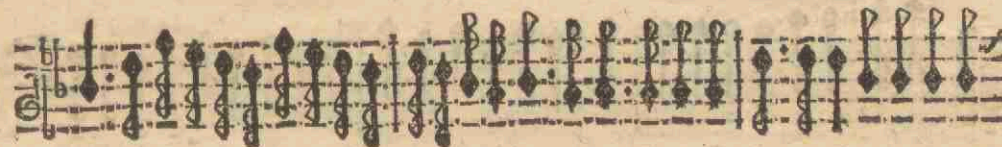
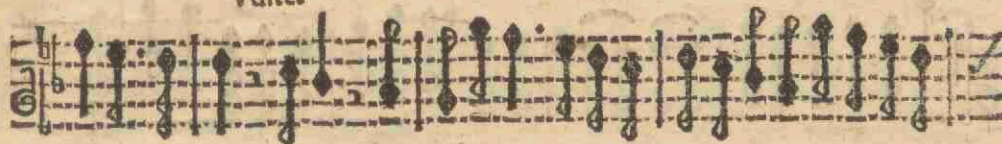
VIOLINO I.



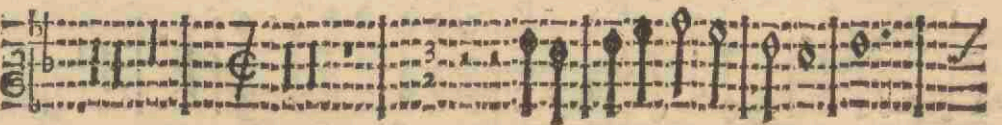
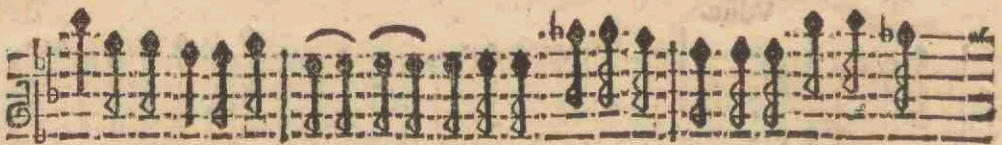
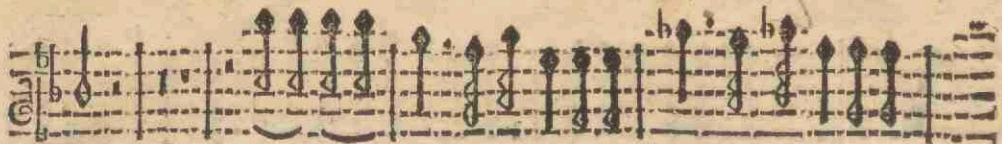
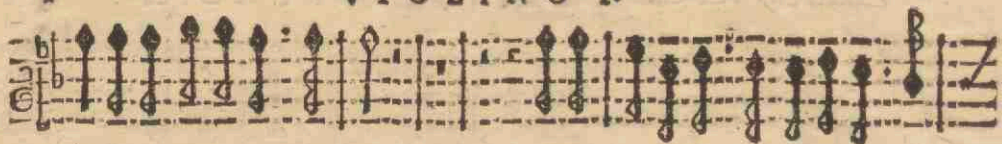
Dialogus inter Angelum  
& Peccatores.



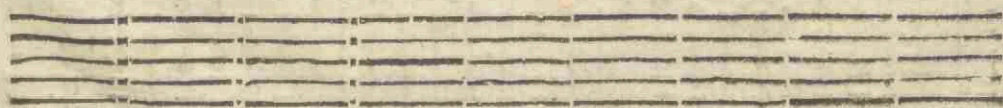
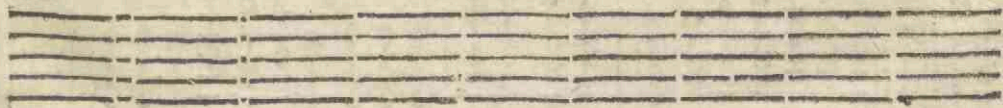
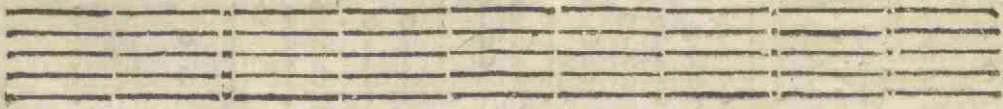
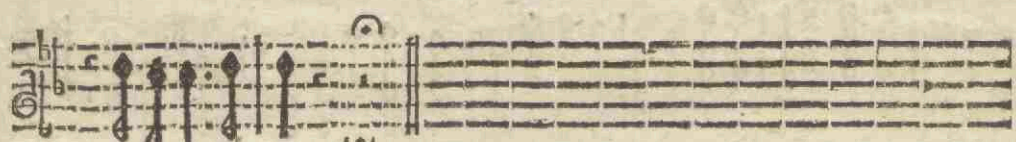
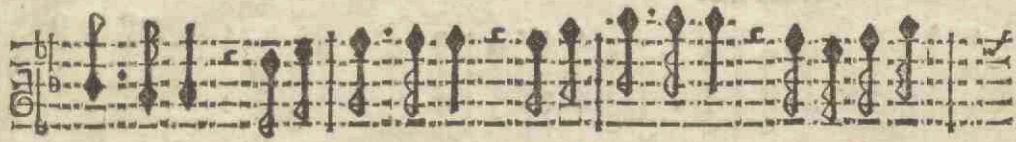
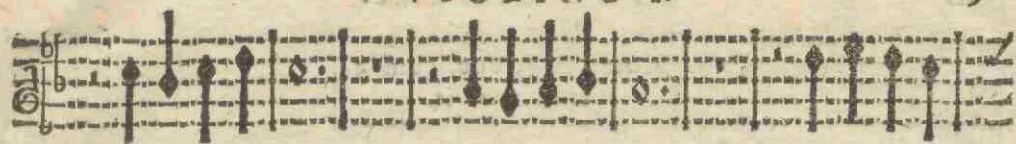
Vdite.



VIOLINO I.

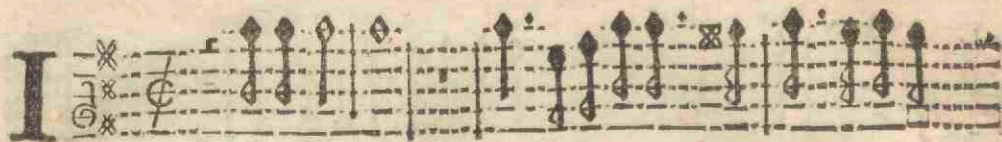


VIOLINO I.

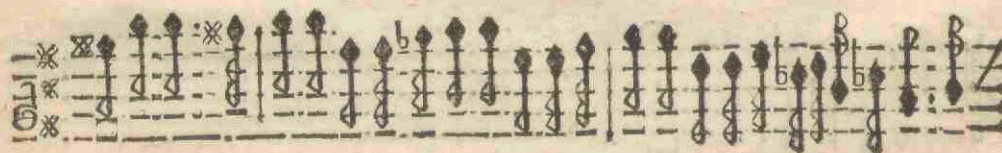
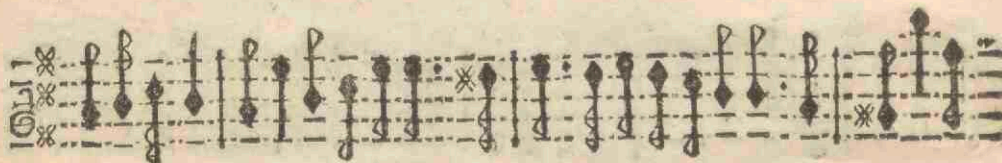


Moret. A 4. Voc. cum 3.  
Instrumen is.

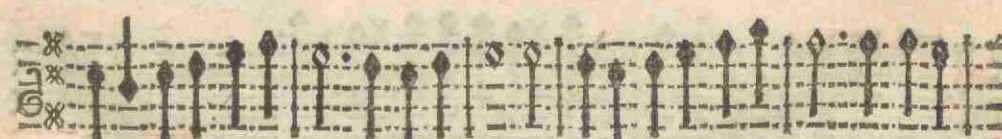
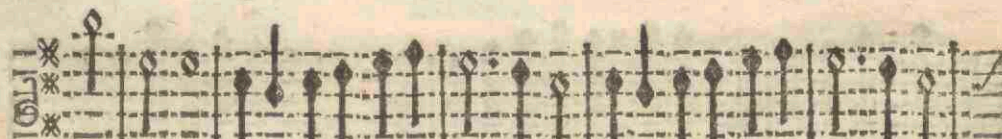
I

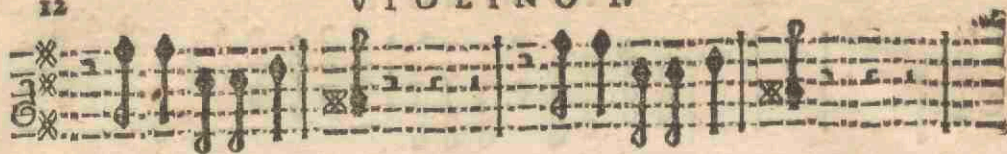


N hac die.



VIOLINO I.

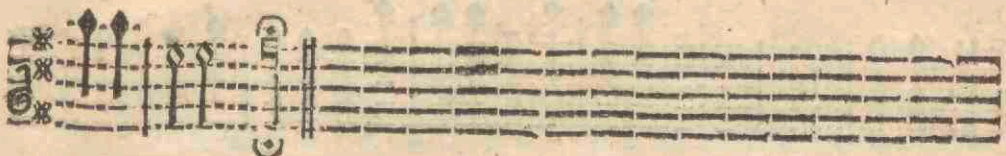
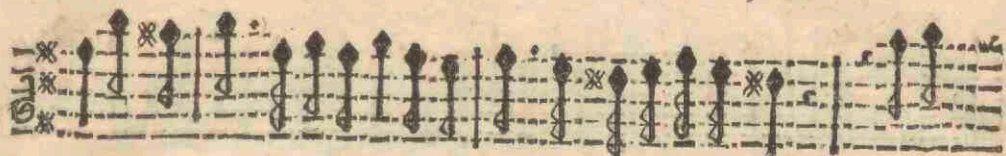




VIOLINO I.



13

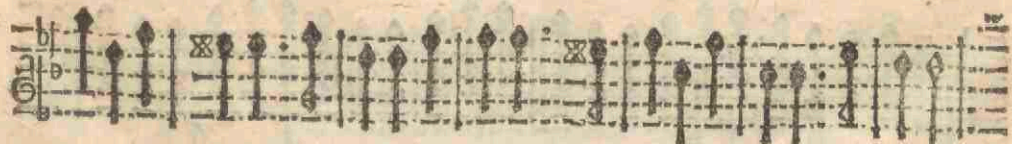


Motet. à 4. Voc cum 3. Instr.

VIOLINO I.

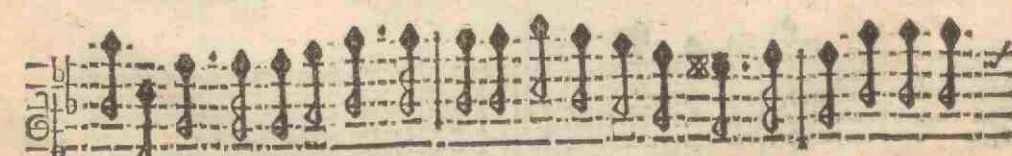
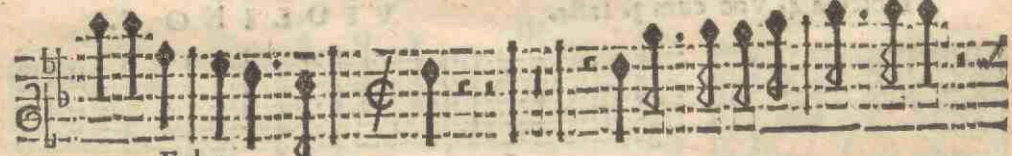


D Cantus.

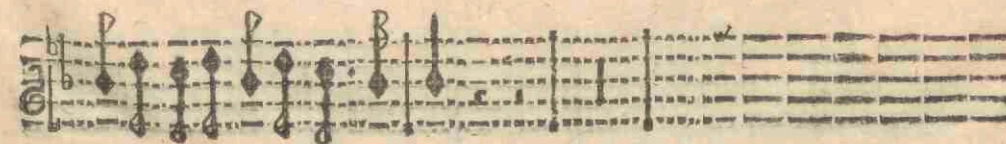


Motetta & Psalmi, D. G. d'Oré, à 3. 4. Voc. cum Instrum. E 7. Finis.





VIOLINO I.



VIOLINO I.

First musical staff with treble clef, key signature of one flat (B-flat), and a common time signature. It contains a series of eighth and sixteenth notes, some with accents, and ends with a double bar line and a fermata.

Second musical staff, continuing the notation from the first staff with similar rhythmic patterns and accents.

Third musical staff, featuring some notes marked with an asterisk (\*).

Fourth musical staff, continuing the melodic line with various rhythmic values and accents.

Fifth musical staff, ending with a double bar line and a fermata. The word "Echo" is written below the staff.

Echo

Sixth musical staff, consisting of five empty lines.

Seventh musical staff, consisting of five empty lines.

Eighth musical staff, consisting of five empty lines.

Motet. A 4. Voc. cum 3.  
Instrumentis.

**E**

Xultra.

VIOLINO I.

E. ho

VIOLINO I.

A musical staff for Violino I. It begins with a treble clef and a key signature of one flat. The first few measures contain notes with fingerings (1, 2, 3, 4) and accents. The rest of the staff is filled with a dense sequence of notes, many with fingerings, suggesting a technical exercise or a complex melodic line.

Echo

A musical staff for Violino I, continuing the piece. It features a treble clef and a key signature of one flat. The notation includes notes with fingerings and accents, maintaining the technical or melodic character of the first staff.

A musical staff for Violino I, continuing the piece. It features a treble clef and a key signature of one flat. The notation includes notes with fingerings and accents, maintaining the technical or melodic character of the first staff.

Echo

A musical staff for Violino I, continuing the piece. It features a treble clef and a key signature of one flat. The notation includes notes with fingerings and accents, maintaining the technical or melodic character of the first staff.

Echo

A musical staff for Violino I, continuing the piece. It features a treble clef and a key signature of one flat. The notation includes notes with fingerings and accents, maintaining the technical or melodic character of the first staff.

A musical staff for Violino I, continuing the piece. It features a treble clef and a key signature of one flat. The notation includes notes with fingerings and accents, maintaining the technical or melodic character of the first staff.

Echo

A musical staff for Violino I, continuing the piece. It features a treble clef and a key signature of one flat. The notation includes notes with fingerings and accents, maintaining the technical or melodic character of the first staff.

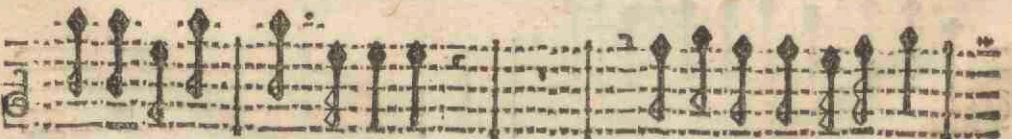
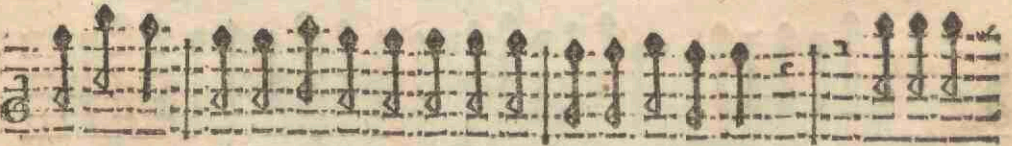
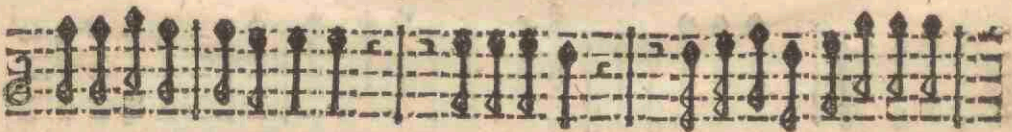
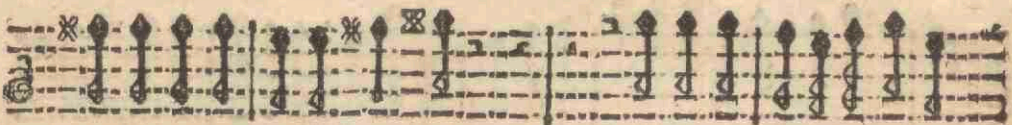
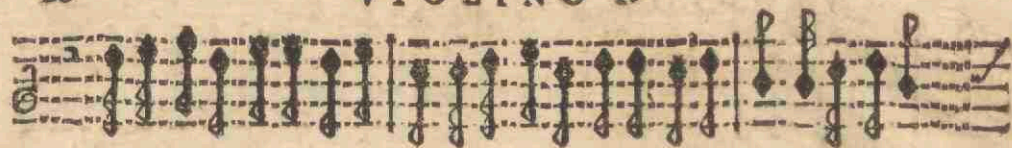
Echo

Echo

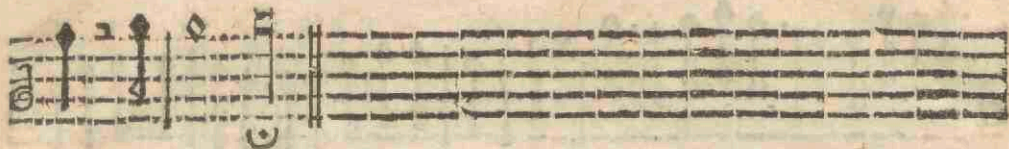
A musical staff for Violino I, continuing the piece. It features a treble clef and a key signature of one flat. The notation includes notes with fingerings and accents, maintaining the technical or melodic character of the first staff.

Echo

VIOLINO I.



VIOLINO I.



Motet. A 4. Voc. cum 3.  
Instrumentis.



Adag.  
Enite.



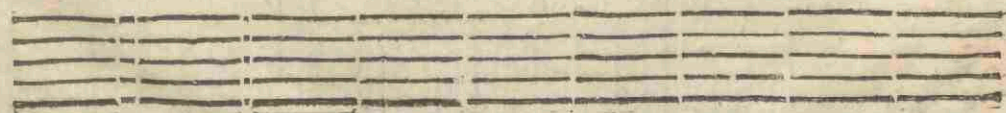
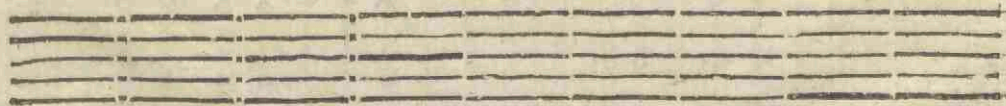
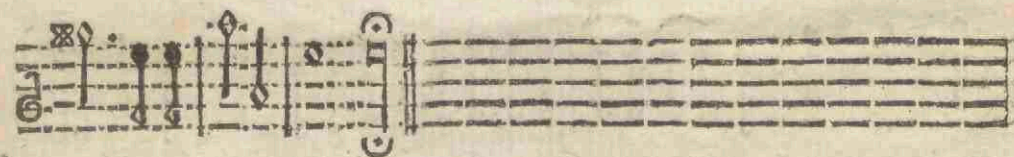
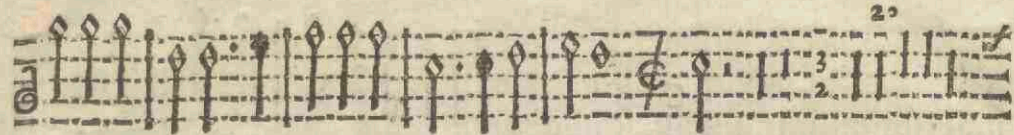
Echo





This page contains eight staves of handwritten musical notation for the first violin part. The notation is written in a historical style, likely from the 17th or 18th century. Each staff begins with a treble clef and a common time signature (C). The music consists of a series of rhythmic patterns, primarily eighth and sixteenth notes, often beamed together. There are several dynamic markings, including 'p' (piano) and 'f' (forte), and some notes are marked with an asterisk (\*). The staves are arranged vertically, with the first staff at the top and the eighth at the bottom. The paper shows signs of age, with some staining and discoloration.

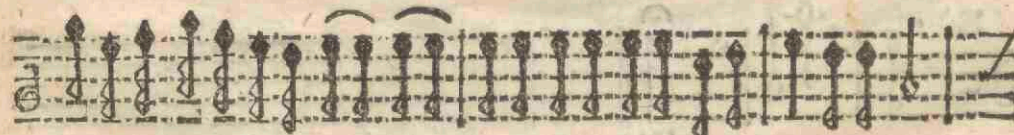
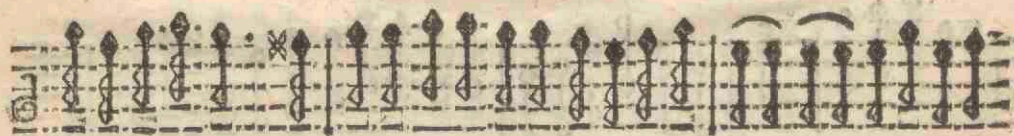
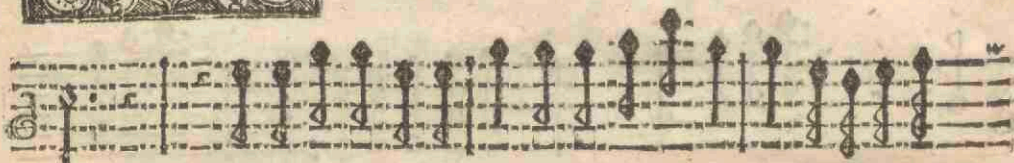
VIOLINO I.



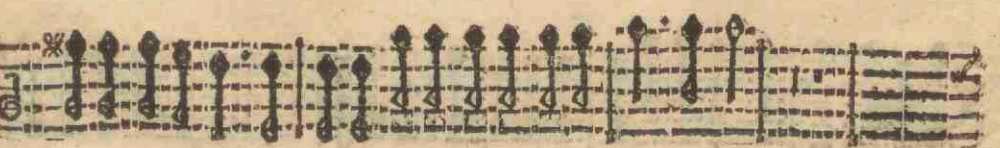
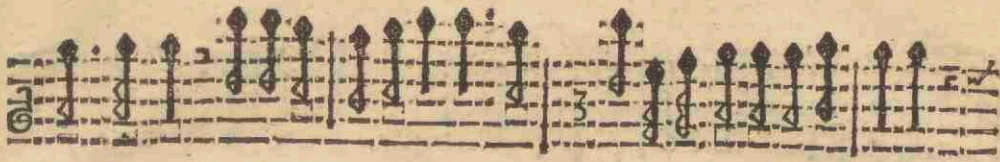
Pfalm. A 4. Voc. cum 3.  
Instrumentis.



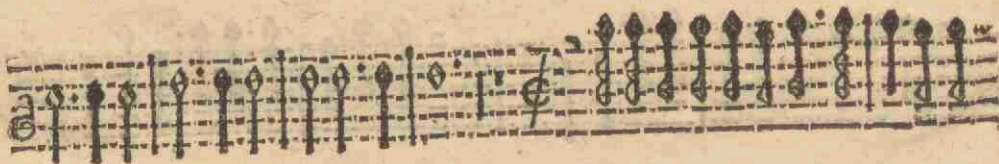
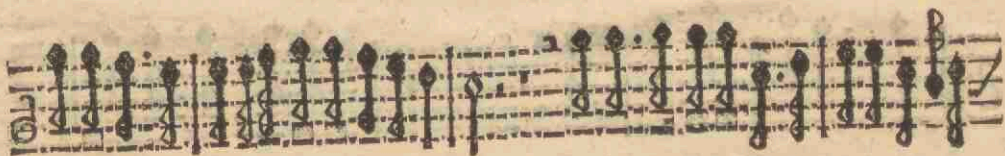
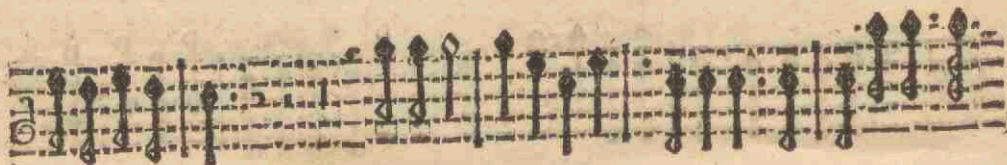
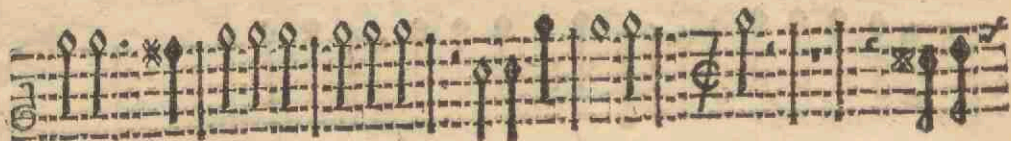
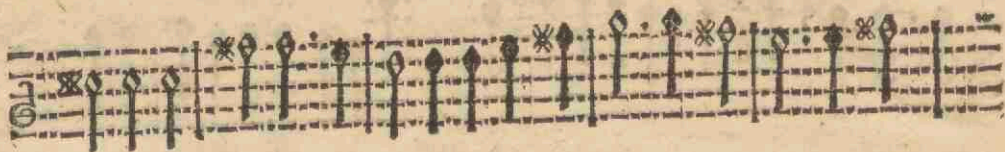
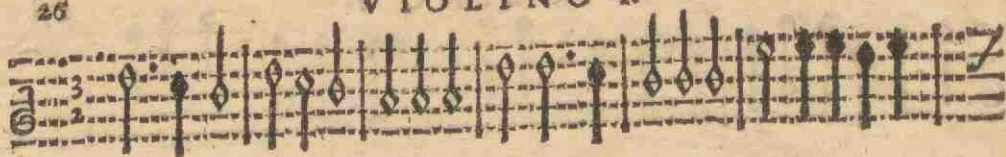
Ixit Dominus.

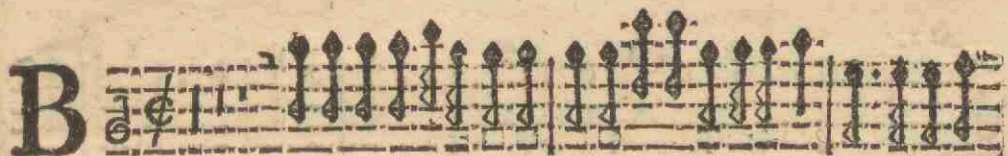
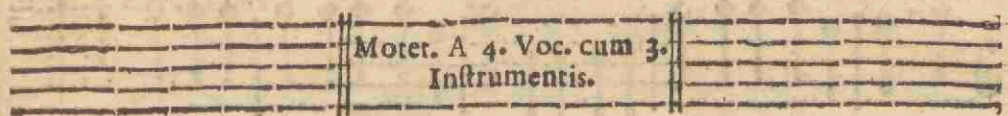
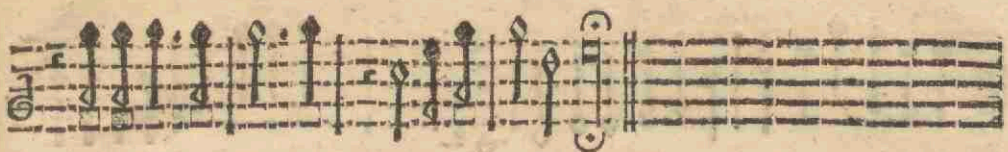


VIOLINO I.

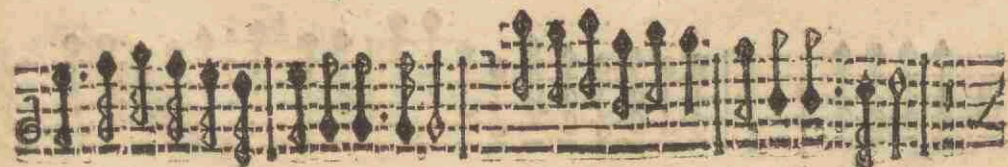
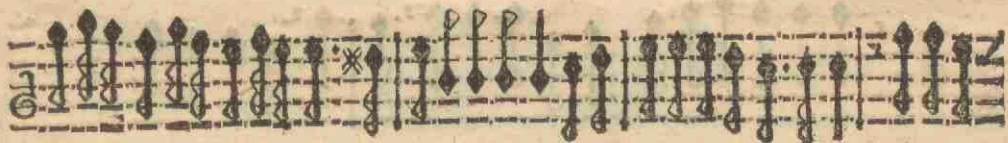


## VIOLINO I.

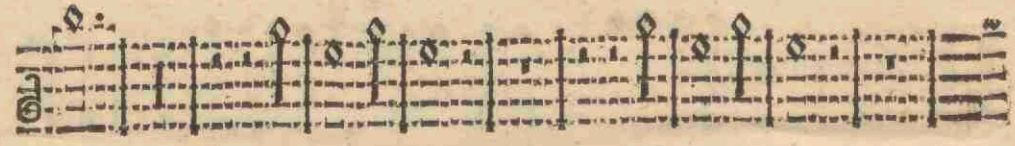
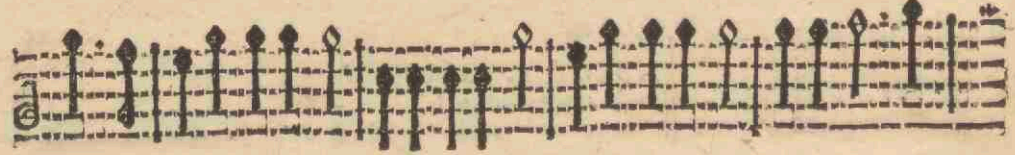
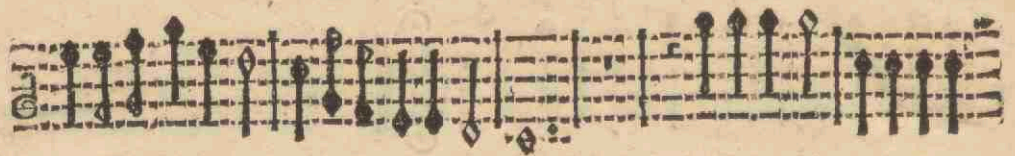
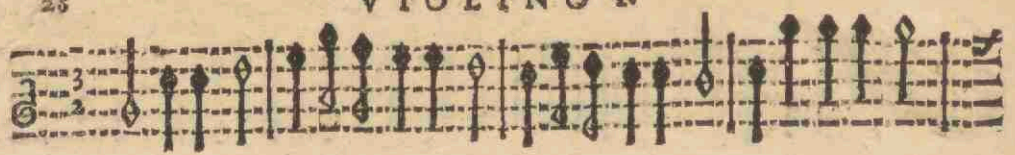




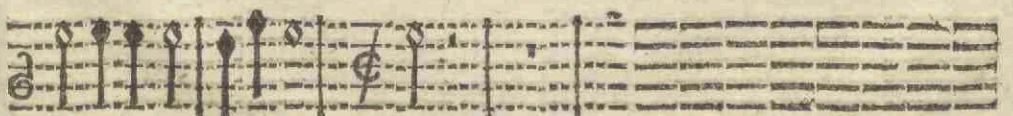
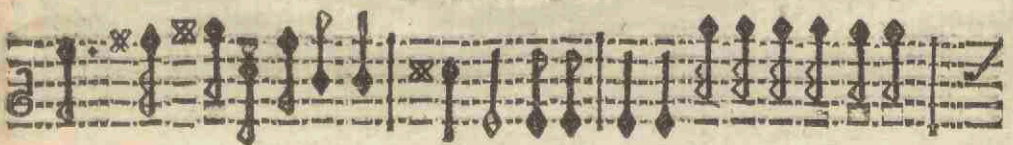
Etius Vir.



VIOLINO I

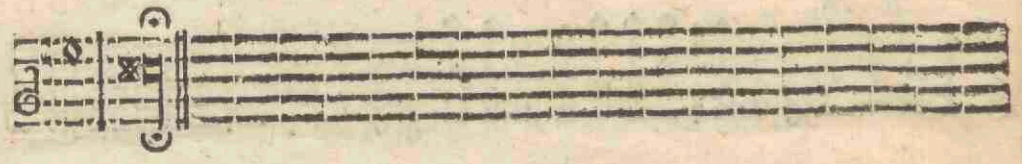
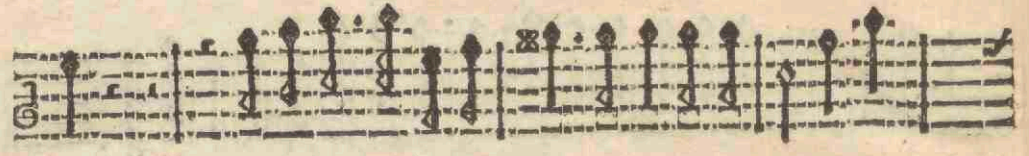
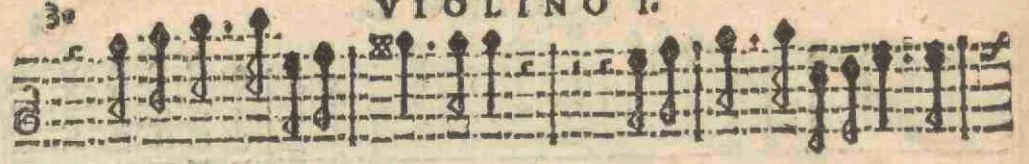


VIOLINO I.

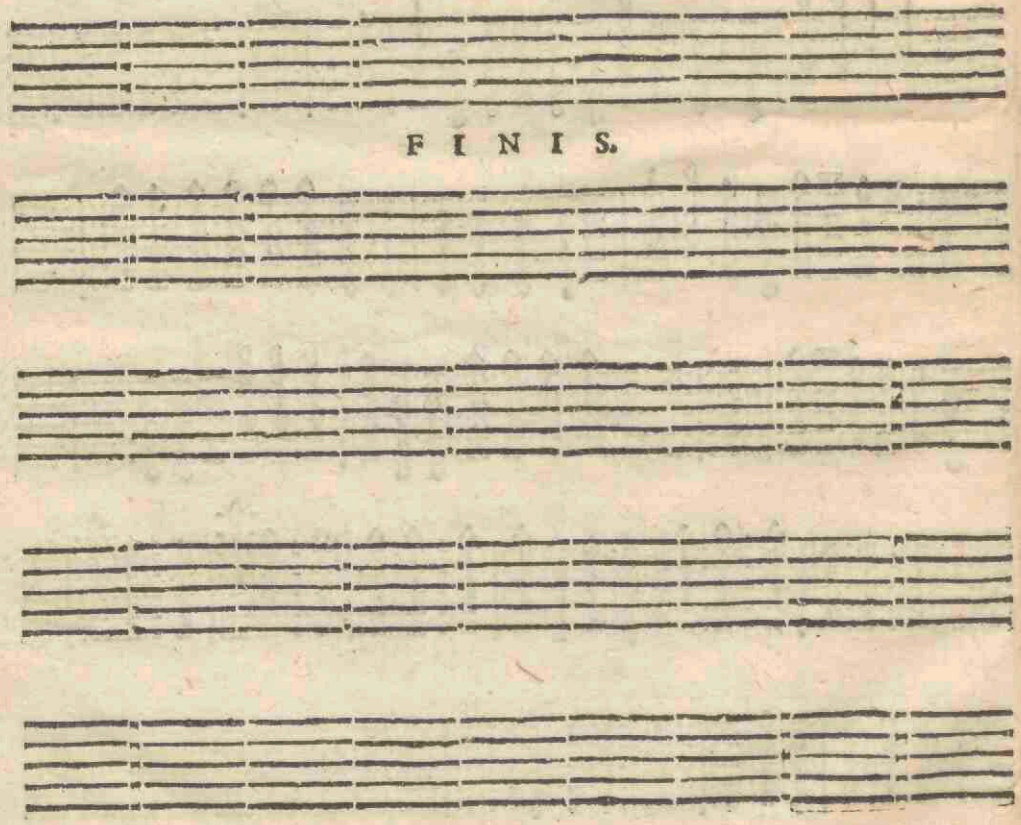




VIOLINO I.



F I N I S.





# TAVOLA

O Pueri.	à 3. Soprano cum 3. Instrum.	Pag.	3
Audite. Dialogus	à 3. duo Cant. & Basso cum 3. Inst.		7
In hac die.	à 4. Can. Al. Ten. & Bass. cum 3. Instr.		10
Ad Cantus.	à 4. Can. Alt. Ten. & Bass. cum 3. Instr.		13
Exultet Cælum.	à 4. Can. Alt. Ten. & Bass. cum 3. Inst.		17
Venite.	à 4. duo Cant. Alt. & Bass. cum 3. Instr.		21
Dixit Dominus.	à 4. Can. Alt. Ten. & Bass. cum 3. Instr.		24
Beatus Vir.	à 4. 2. Can. Alt. & Bass. cum 3. Instr.		27

F I N I S.





