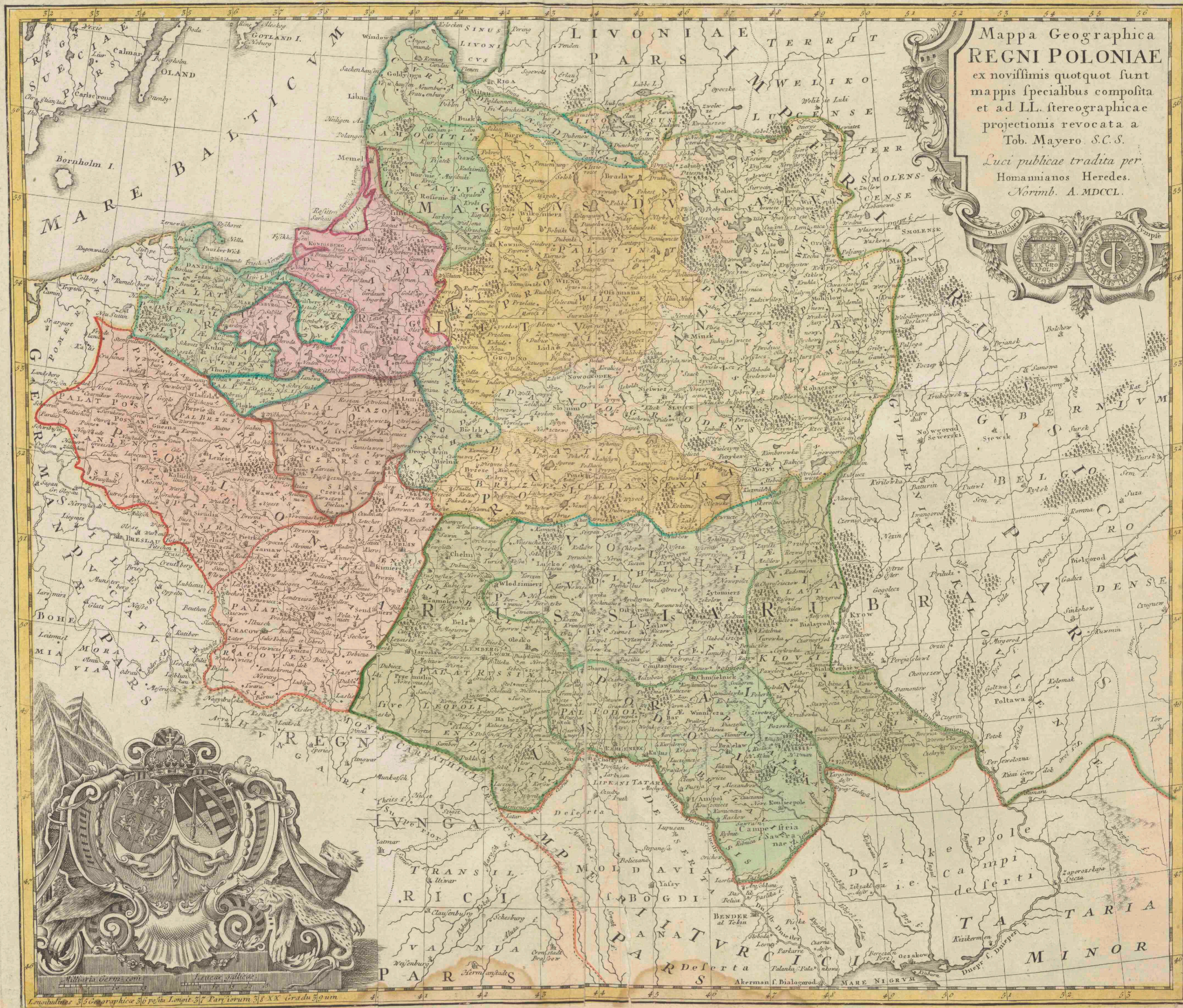




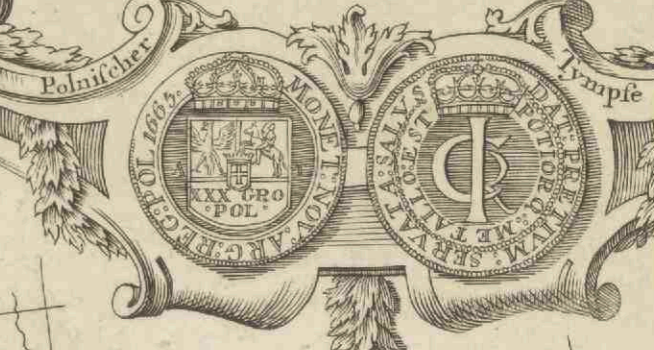
Mappa geographica regni Poloniae

<https://hdl.handle.net/1874/429051>

Carte des Etats de la COUVRONNE de POLOGNE, nouvellement dessinée par M^r Tob. Mayer
 et publiée par les Heritiers de Homann. l'an MDCCL.



Mappa Geographica
 REGNI POLONIAE
 ex novissimis quotquot sunt
 mappis specialibus composita
 et ad LL. stereographicæ
 projectionis revocata a
 Tob. Mayero. S.C.S.
 Luci publicæ tradita per
 Homannianos Heredes.
 Norimb. A. MDCCL.



VIII Ed. 1