



A plan of Dunquerque Road with the Western Channel & part of the Eastern Channel : surveyed December 1743.

<https://hdl.handle.net/1874/431193>

A PLAN OF DUNQUERQUE ROAD

With the Western Channel & Part of the Eastern Channel,

SURVEY'D DECEMBER 1743.

N.B. The Figures within the Prick'd Lines denote the Depths at Low-Water in Feet, and those without in Fathoms.

The Roman Numbers shew the Time of High Water at Full and Change, and the Arrows the setting of the Tide.

The Water rises at Spring Tides from 18 to 20 Feet.

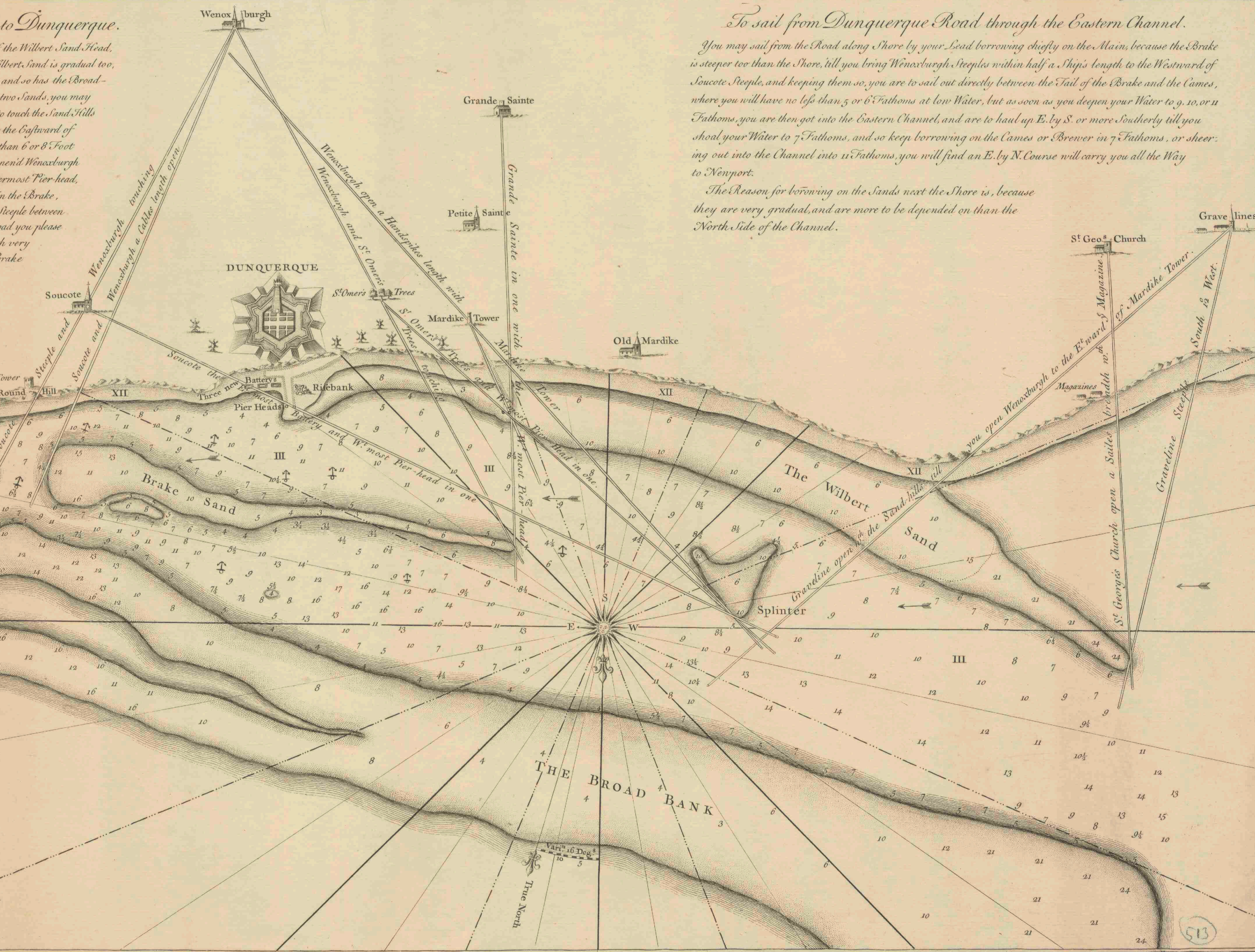
Directions for Sailing in at the West Channel to Dunquerque.

As soon as you have brought Graveline Steeple S. by W. you come abreast of the Wilbert Sand Head, there is a wide Channel between the Wilbert Sand and the Broad Bank, the Wilbert Sand is gradual too, and has no less than three & a half Fathoms on the West End of it at low Water, and so has the Broad Bank on the West End, but is steeper too; between the Westernmost Part of these two Sands, you may either steer in or turn by your Lead, till you come to bring Graveline Steeple to touch the Sand Hills in Graveline Bay, which you must not shut in till you open Martike Tower to the Eastward of Wenoxburgh Steeples to shun the Splinter which is steep too, and has no more than 6 or 8 Foot Water on it at low Water; If you have a leading Wind as soon as you have open'd Wenoxburgh to the Eastward of Martike Tower, or brought Martike Tower on the Westernmost Pier-head, you may haul in directly for Martike Pier Heads, till you have shot within the Brake, which you will know either by deepning your Water, or by bringing Soucote Steeple between the West Battery & the Riabank, then you may steer into what Part of the Road you please by your Lead, and Anchor in 9 or 10 Fathoms Water, where you will meet with very good holding Ground, being Clay mixt with Sand, and be shelter'd by the Brake against North Westerly Winds.

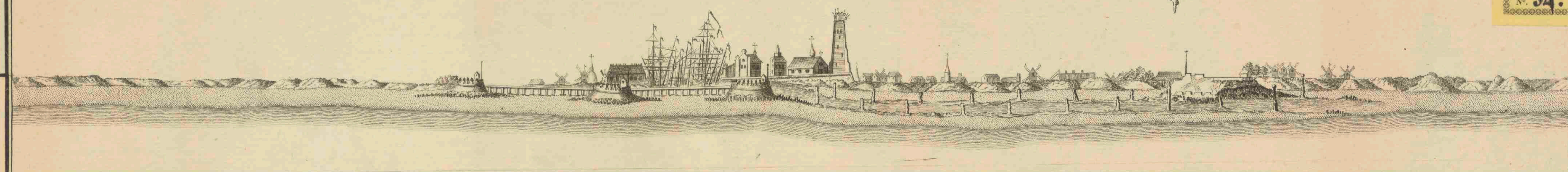
To sail from Dunquerque Road through the Eastern Channel.

You may sail from the Road along Shore by your Lead borrowing chiefly on the Main, because the Brake is steeper too than the Shore, till you bring Wenoxburgh Steeples within half a Ship's length to the Westward of Soucote Steeple, and keeping them so, you are to sail out directly between the Tail of the Brake and the Cames, where you will have no less than 5 or 6 Fathoms at low Water, but as soon as you deepen your Water to 9, 10, or 11 Fathoms, you are then got into the Eastern Channel, and are to haul up E. by S. or more Southerly till you shoal your Water to 7 Fathoms, and so keep borrowing on the Cames or Brewer in 7 Fathoms, or sheer-ing out into the Channel into 11 Fathoms, you will find an E. by N. Course will carry you all the Way to Newport.

The Reason for borrowing on the Sands near the Shore is, because they are very gradual, and are more to be depended on than the North Side of the Channel.



SOUTH PROSPECT OF THE TOWN OF DUNQUERQUE



Biblioth. Rhen.-Traj.
d. d.
Vir Cl. G. Moll.
MAPPAE TERRESTRES
Sect. V.
N^o 34.

A Scale of one League.

53