



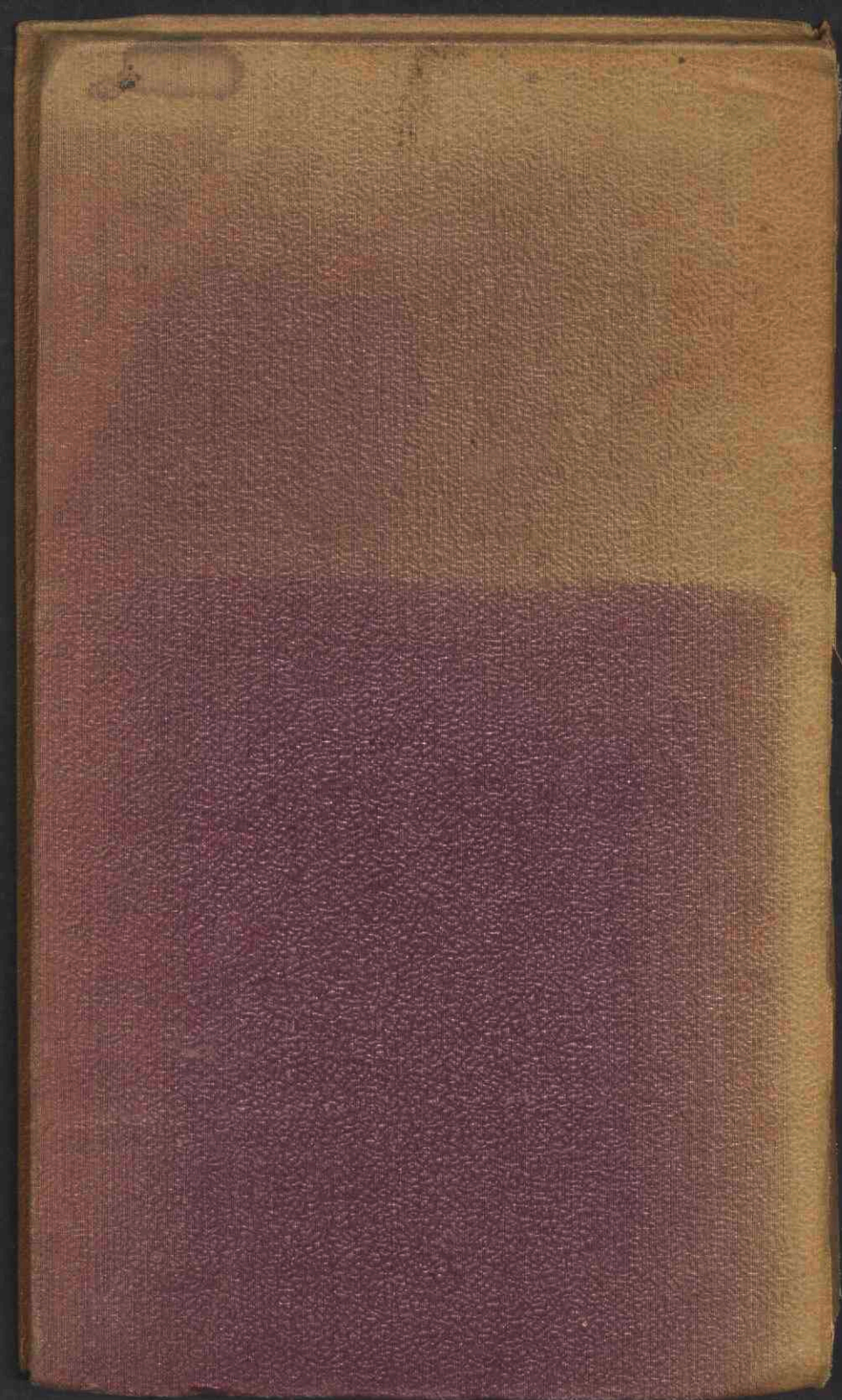
Grahams New map of England and Wales with part of Scotland showing the mail coach, turnpike & railroads, canals & c

<https://hdl.handle.net/1874/432372>

GRAHAM'S
NEW
MAP OF ENGLAND & WALES,
CANALS, RAIL-ROADS, &c.

From the latest Authorities.

Geogr. et Itinerat.
Octavo n^o. 522



GRAHAM'S
New Map of
ENGLAND.
 AND
WALES.
 WITH PART OF
Scotland.
 SHOWING THE
Mail Coach, Turnpike & Railroads, Canals &c.

EXPLANATION.

Turnpike Roads

Gross Roads

Rail Roads

Rivers

Navigable Canals

Offices in Capitals as

Market Towns in Roman Print as

the figures attached denote their distance from London as

Borough Towns as

through Towns as

are described by stars which denote the number of Turnpikes returned by each Borough as



BRITISH STATUTE MILES

Drawn from the latest authorities by GEORGE KEMP, Land Surveyor, LONDON.

GRAHAM'S
 New Map of
ENGLAND,
 AND
WALES.
 WITH PART OF
 Scotland,
 SHOWING THE
Mail Coach, Turnpike & Railroads, Canals &c.



EXPLANATION.

Turnpike Roads YORK
 Cross Roads BATH
 Rail Roads LONDON
 Rivers LEADS
 Variable Canals LONDON
 Cities in Capitals as YORK
 Market Towns as BATH
 Borough Towns as LONDON
 The figures attached denote their distance from London as 184
 The numbers in Roman Print as LONDON
 are described by stars which denote the
 number of Members returned by each Borough as LONDON

56°
54°
53°
52°
51°

EXPLANATION.

- Turnpike Roads
- Cross Roads
- Rail Roads
- Rivers
- Navigable Canals
- Cities in Capitals
- Market Towns in Roman Print
- the figures attached denote their distance from London at 100
- Borough Towns as described by stars which denote the number of Members returned by each Borough as



Drawn from the latest authorities by GEORGE KEMP, Land Surveyor, LONDON.