



# **Philomela aurea 1.2.3.4 Vocibus cum Instrumentis modulata**

<https://hdl.handle.net/1874/433525>

G. Dore'

Philomela aurea.

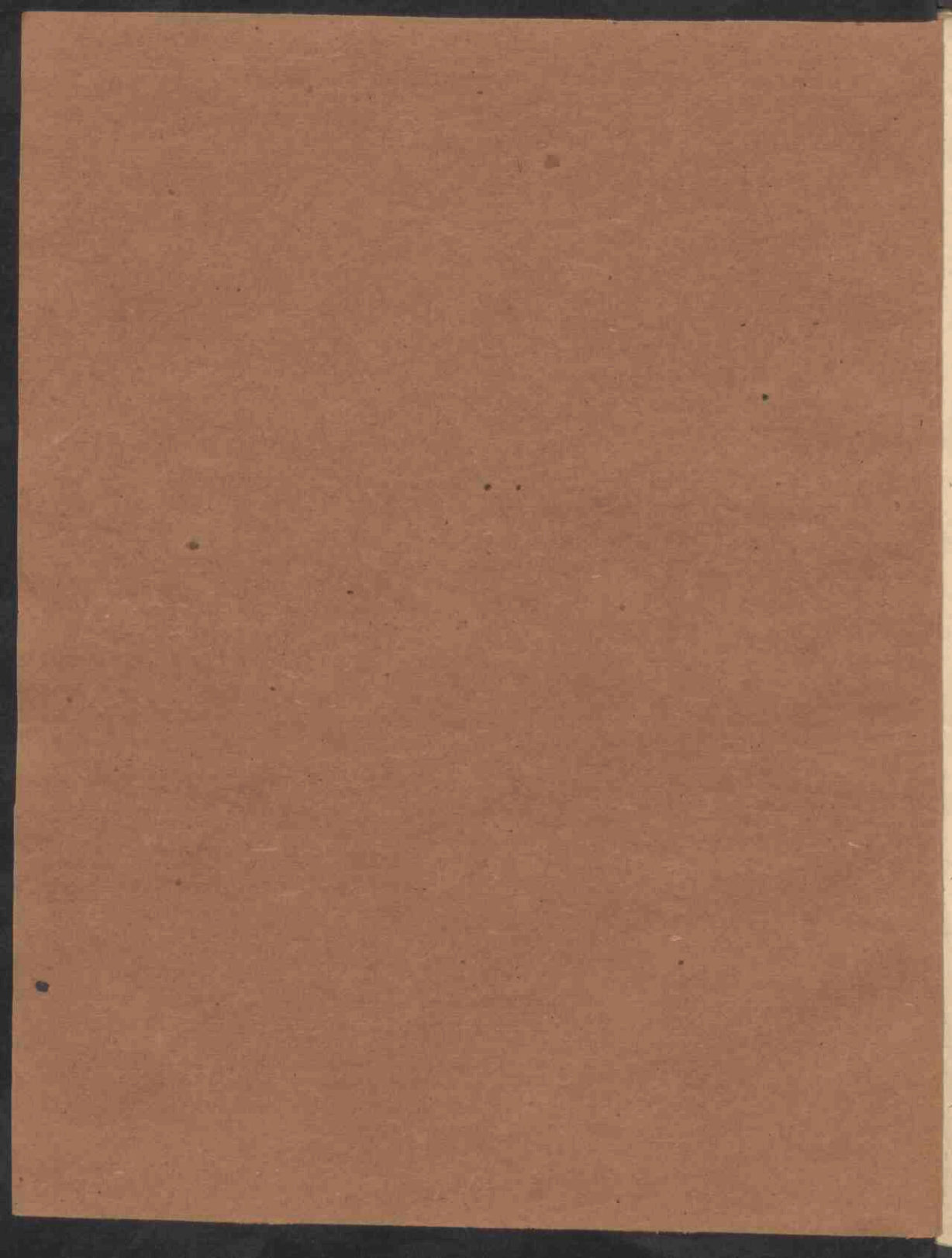
Basso viol



3 d 253.

Antv. 1684

vidua L. de Potter.



BASSO VIOL.

# PHILOMELA AVREA

1. 2. 3. 4. Vocibus cum Instrumentis

MODVLATA.

AVTHORE MAGISTRO G. DORÉ

ATREBATENSIVM PHONASCO

## OPVS TERTIVM

DICATVM

PER ILLUSTRUM AC PRÆCLARUM DOMINUM

D. IOANNI GVILIELMO FRANCISCO DE SENS

CATHEDRALIS B. M. V. ATREBATENSIS

CANONICO MERITISSIMO.



ANTVERPIÆ,

Apud Viduam LUCÆ DE POTTER, Typographi Musices  
sub signo candidi Liliæ, M. DC. LXXIV.

PERILLUSTRI AC PRÆCLARO DOMINO  
 D. IOANNI GVILIELMO FRANCISCO DE SENS  
 CATHEDRALIS B. M. V. ATREBATE NSIS  
 CANONICO MERITISSIMO.



In multumque cogitanti mihi, Vir Ornatissime, quem opusculi hujus adoptarem Patronum, cui quàm tibi magis vellem, cui magis deberem, occurrit nemo. Vellem, quòd te semper noverim Musices amantissimum, quodque hac in arte quiddam identidem pro meo Phonatei quò fungor Officio composui, noverim haud unquam tibi fuisse ingratum. Deberem autem, tum propter eximias virtutes tuas, cum pro illa singulari quâ tu me semper profecutus es benevolentia, ac pro iis quæ in me omni data occasione nequid conulisti, sed & quibus me cumulasti beneficiis. Humanitatem quidem tuam, Vir Amantissime, & propensum in me animum ut ingenuè expendo; ità iis me plurimum debere haud invitus agnosco. Tanta enim in me extiterunt hactenus, ut omnem mihi remunerandi spem præcidant, voluntatem tamen relinquunt. De qua, ut tibi constet, monumentum aliquod gratitudinis meæ ad te adfero; artis nempe meæ qualiscunque conatus & tentamentum: ut tantisper saltem velle me videas, donec potero quod volo. Si tuo me Patrocinio dignatus fueris, Os Zoïlorum obturari comprimique haud abs te arbitror. Qui enim oggannire audebunt, quid in isthoc opusculo carpere, si præfixum viderint Viri nomen, qui nativa quadam arte, quiddam in mea delicatius est, exactè adedè dignoscit, qui canora suavi- que admodum vocis modulatione, nedum in choro Insignis Ecclesiæ Atrebatensis, ubi ab iis qui dignitatibus fulgent, primam occupat sedem; sed & in secretioribus laribus carmina numeris adstricta Musicis sæpiùs decantare peculiari voluptati habet? imò quas non probaturos autumem isthuc operis, si sub tutela præclari adedè Canonici esse perspexerint, cujus probitas, pietas, candor, humanitas, liberalitas, mores ad elegantiam & comitatem facti, nullorum qui norunt corda non alliciunt, non demulcent, non devinciunt. Haud igitur, quod tam enixè ambio, abnue patrocinium, meaque dedignare gratitudinis qualecunque monumentum. Leve sanè & tenue munus, si ex mole metiaris; non leve autem si ex animo, quem tua benevolentia ità sibi obstrinxit, ut ingraticissimus sim mortalium, nisi eam lubens agnoscam. Tu ergò laborem huncce meum nomini tuo inscriptum, benevolo animo, sereno vultu suscipe, gratum futurum (ut auguror & spero) non pretio suo, quod nullum est, sed Autoris in te affectu. Vale, Vir Consultissime. Deum rogo ut te Cathedrali nostræ, totique Ecclesiæ servet incolumem.


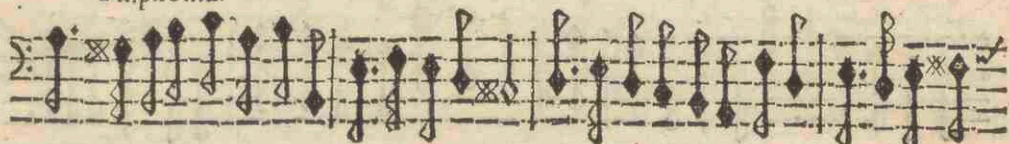
BASSO VIOLA

A voc. sola & 5. Infr.

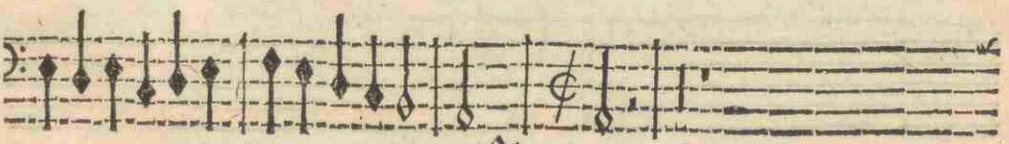
S



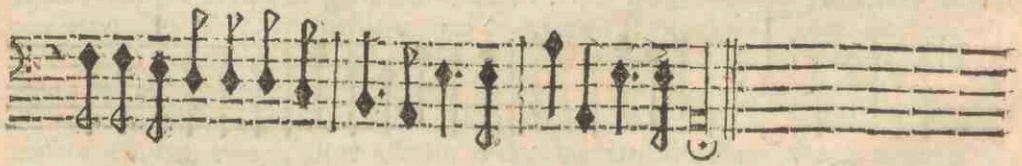
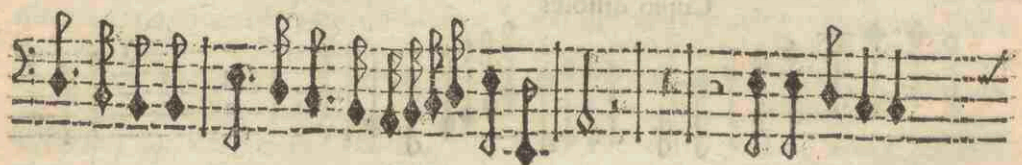
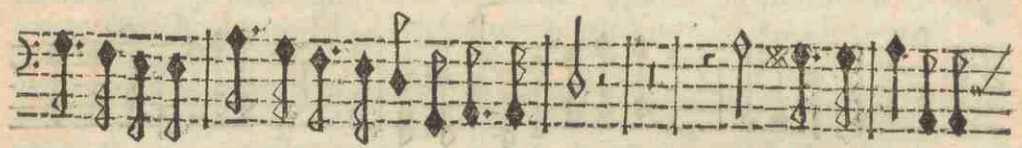
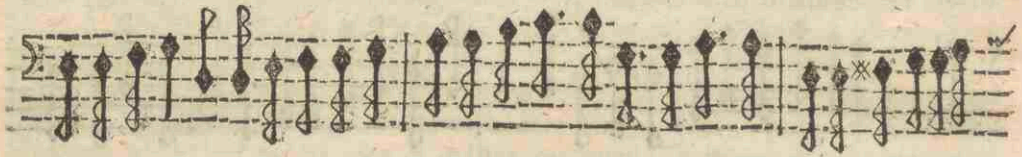
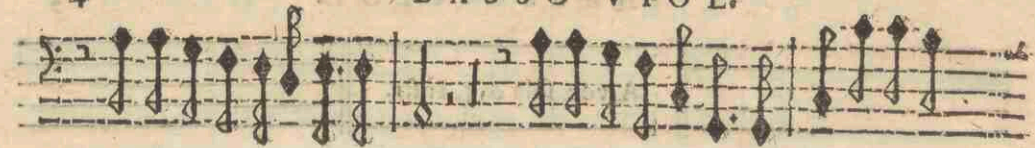
Ymponia.



Cupio diffolvi



BASSO VIOL.



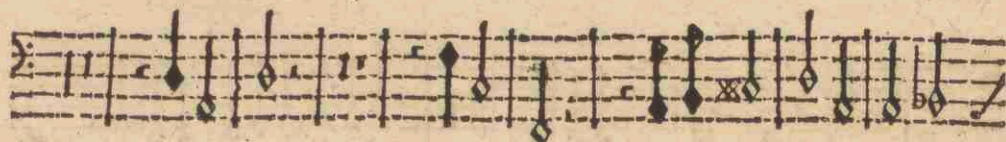
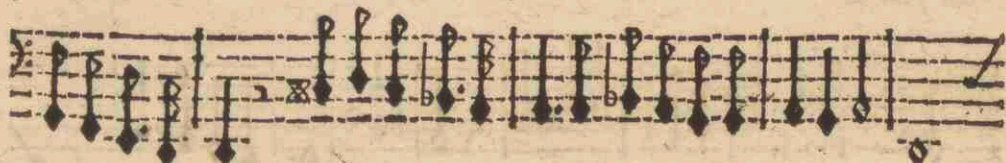
BASSO VIOL.

5

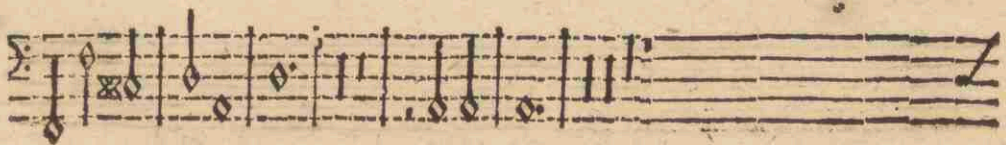
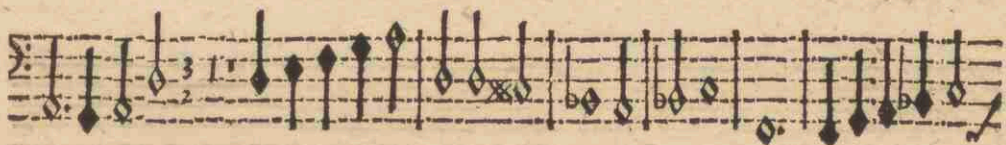
A voc. sola & 5. Instrum.



Doro te.

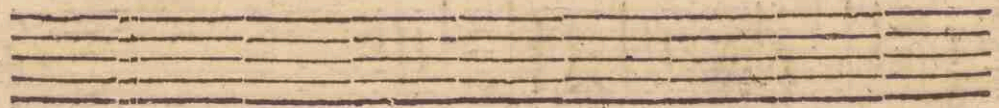
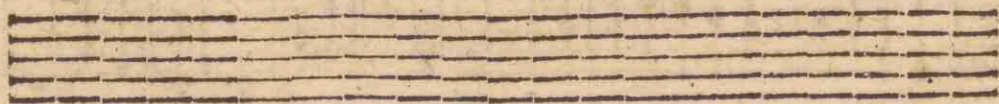
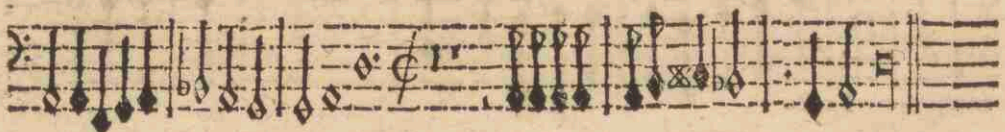
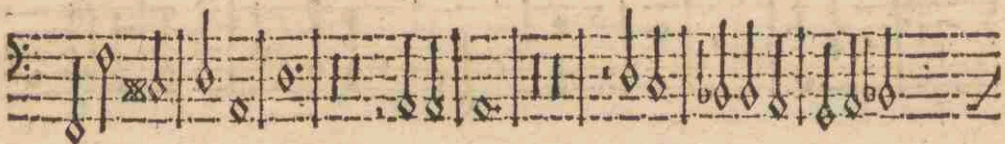
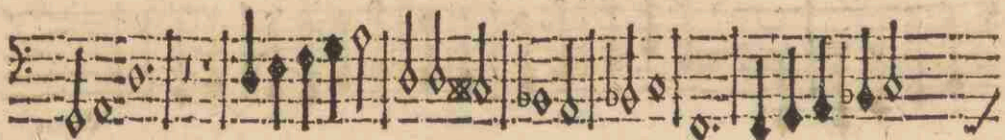
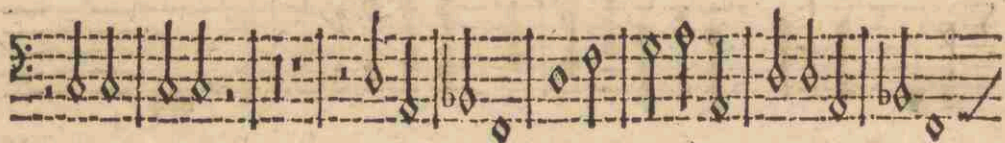
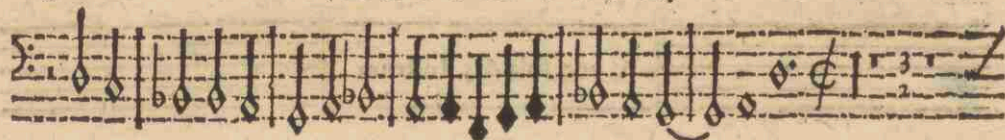


Lente





BASSO VIOLA



BASSO VIOL.

A voc. Sola & 5. Instr.

S

Ymponia.

Heu mihi

Echo

Echo

Echo

Echo

Echo

Lento

Echo

Echo

Echo

Echo

Echo Tremolo

BASSO VIOLA

A 2. Voc. & 7. Instr.

**R** *Esonate.*

*Relonate*

BASSO VIOLA

Allegro

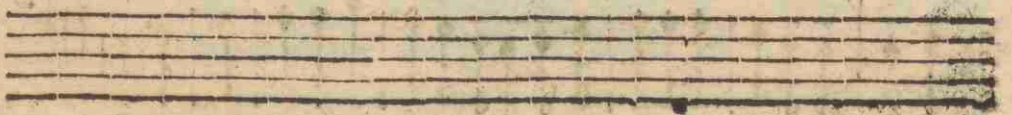
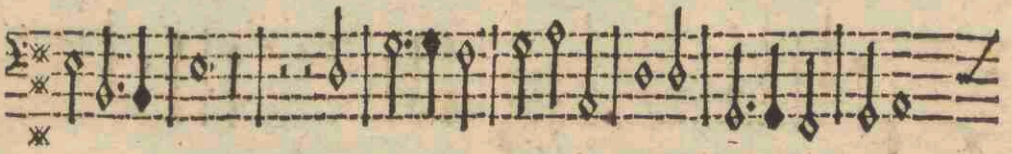
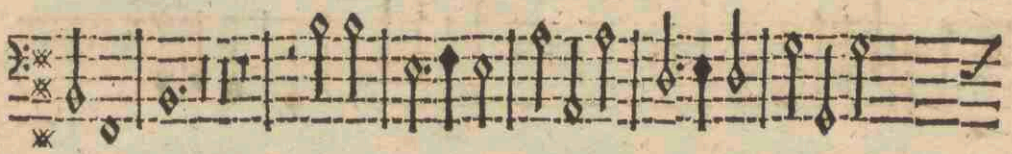
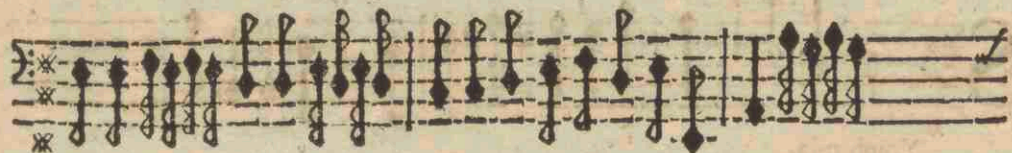
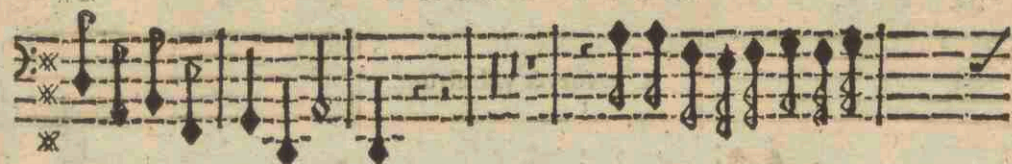
A 2. voc. & 5. Instr.

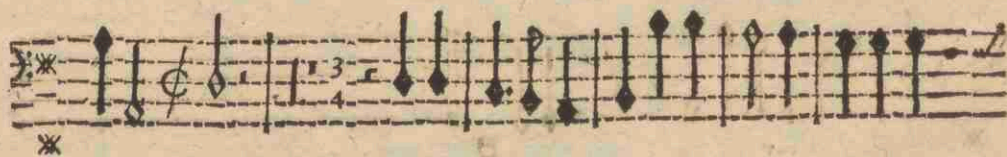
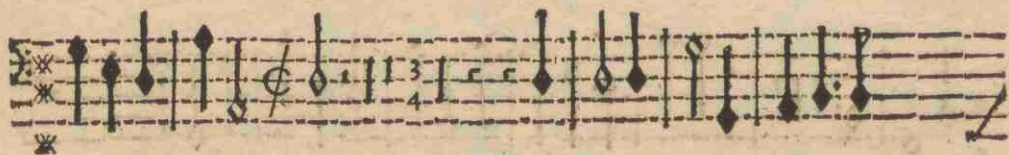
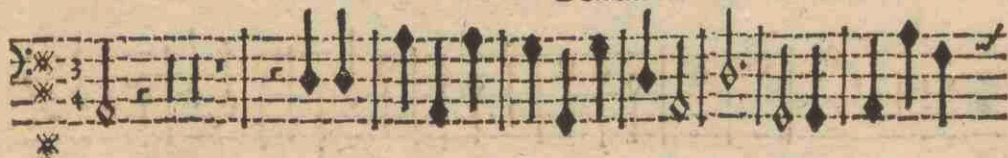
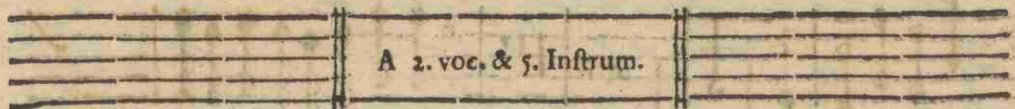
S

Ymponia.

Quemadmodum

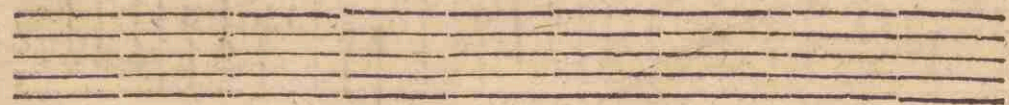
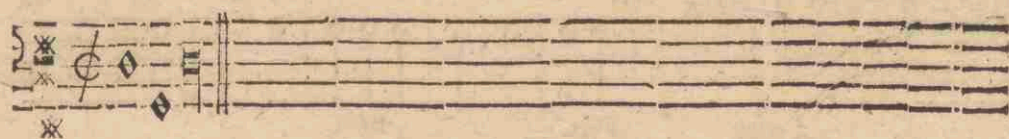
BASSO VIOLA





## BASSO VIOLA.

13



Motetta A 2. 3. & 4. voc. cum Instr. R. D. G. Doré

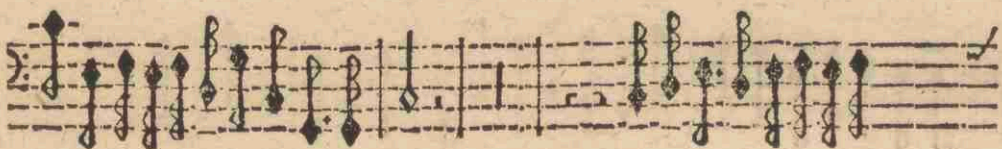
H 7 Finis.



**A** 

*Nimæ fideles.*







*Lentissimè Fort*



*Lente Fort. Echo*

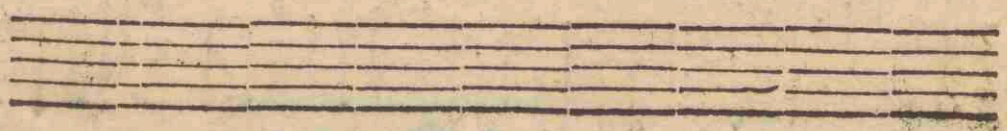
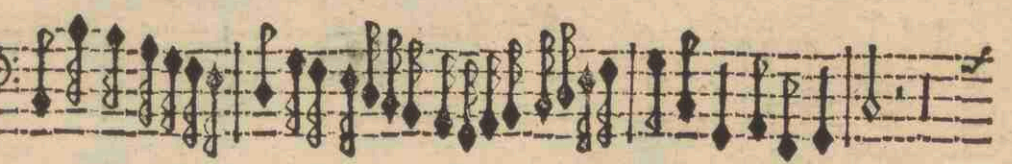
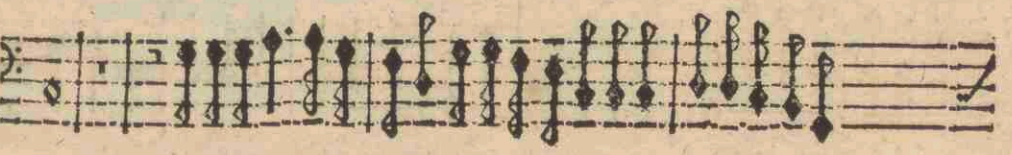
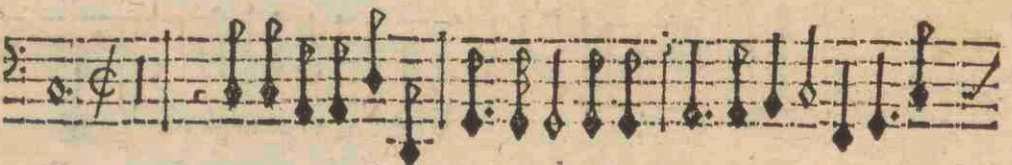
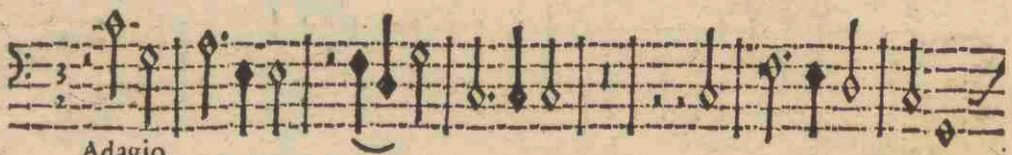
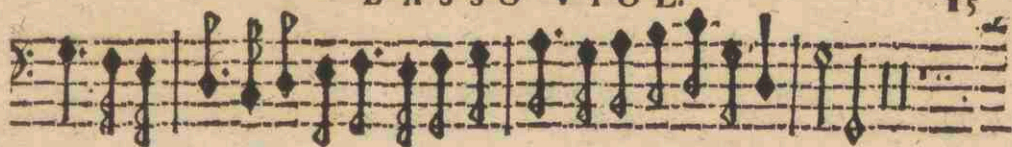


*Adagio*

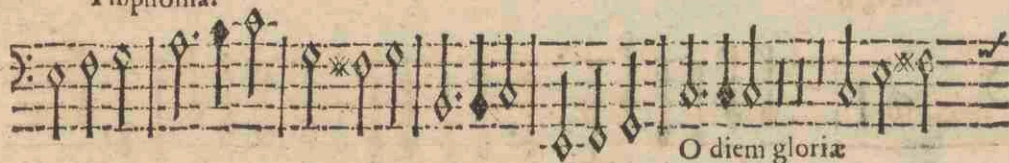


BASSO VIOLA

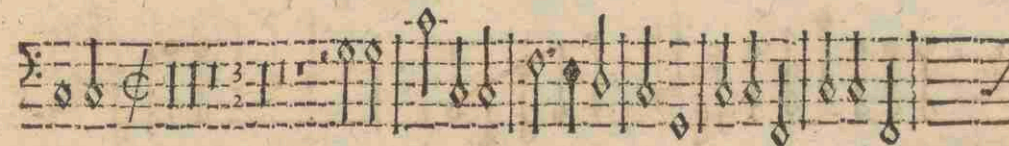
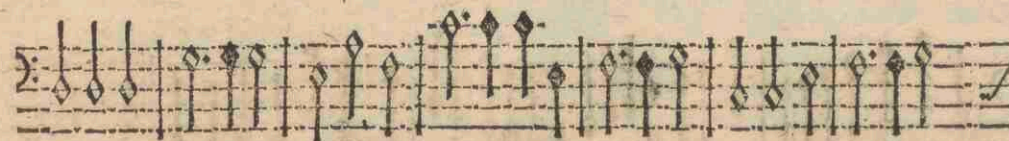
15



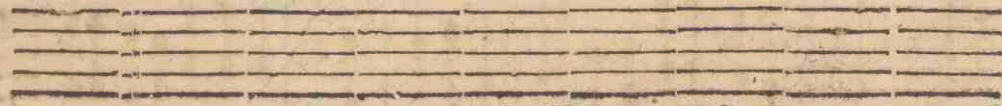
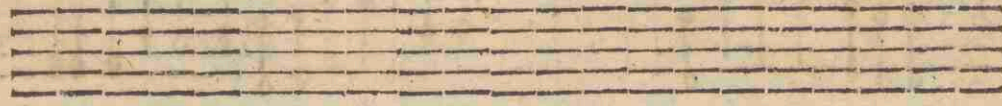
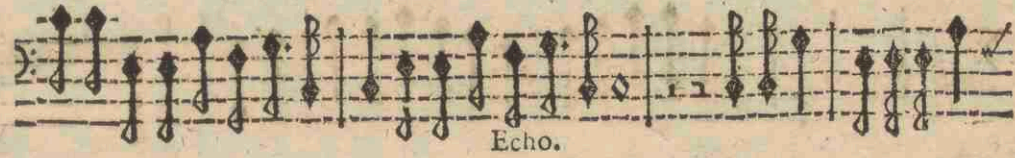
A 4. voc. &amp; 3. Instr.

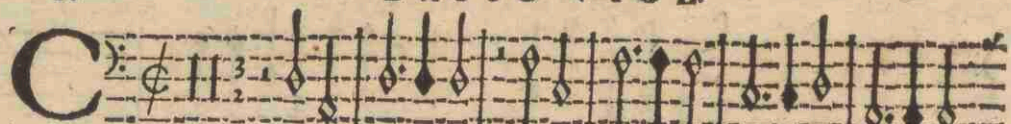
Allegro  
Ymponia.

O diem gloriae



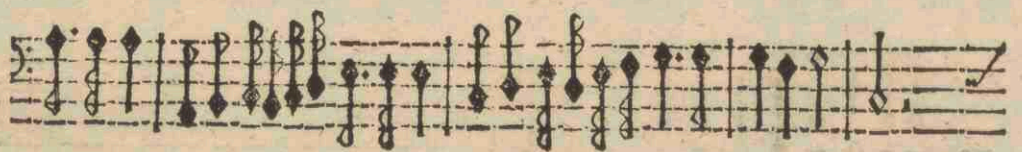
BASSO VIOL.



C  *Onfitebor.*



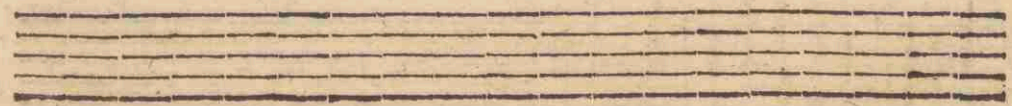
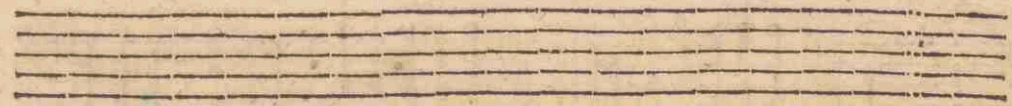
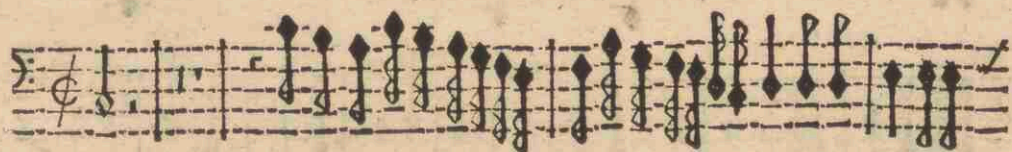
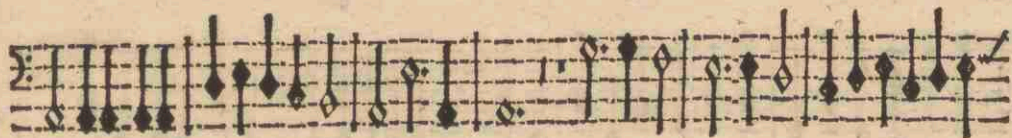


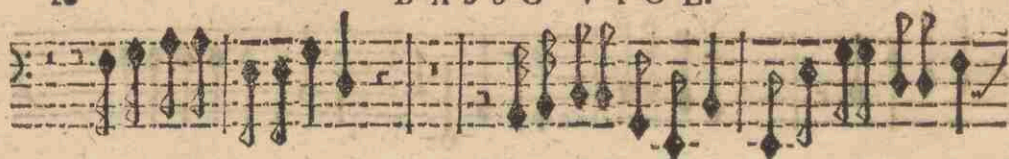




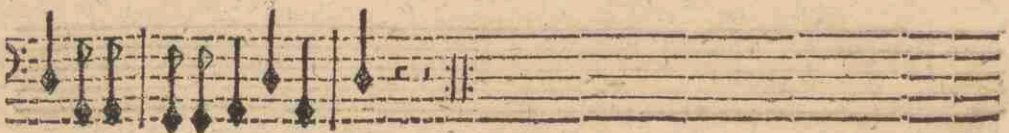
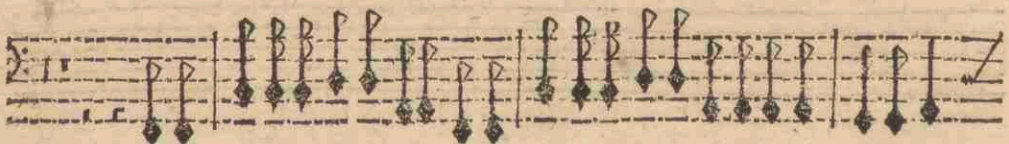
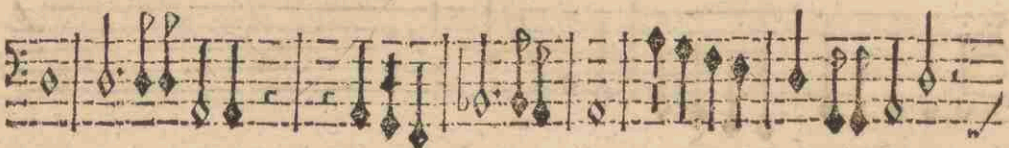
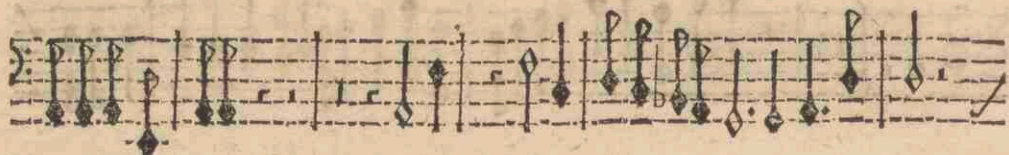
BASSO VIOL.

19

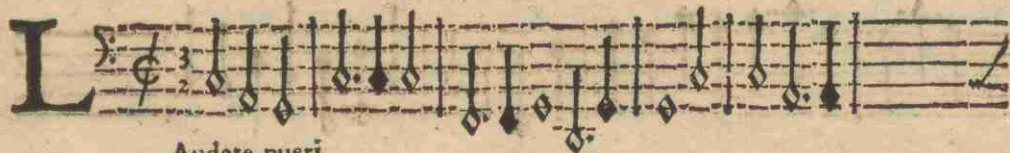




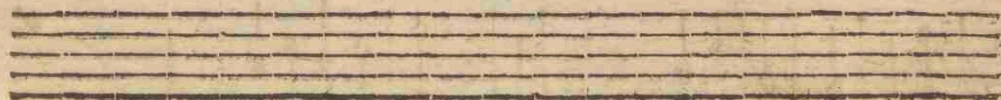
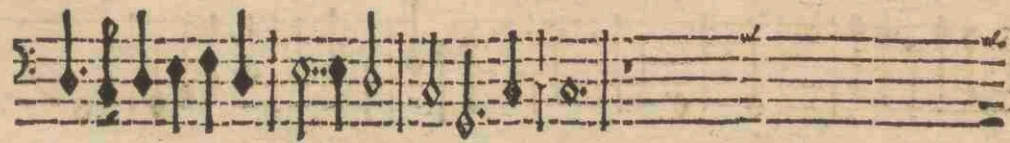
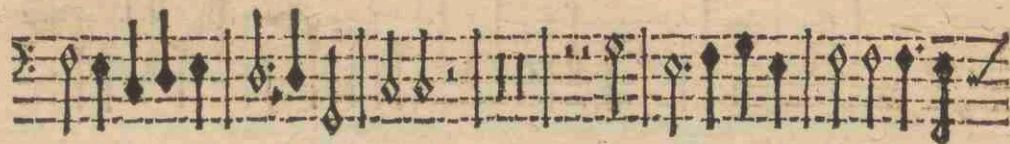
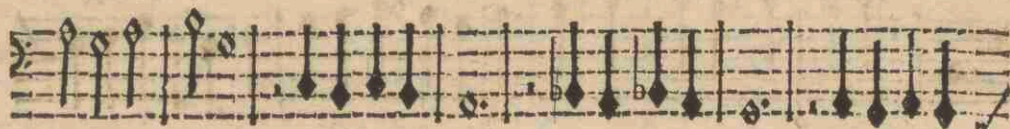
Echo



BASSO VIOL.

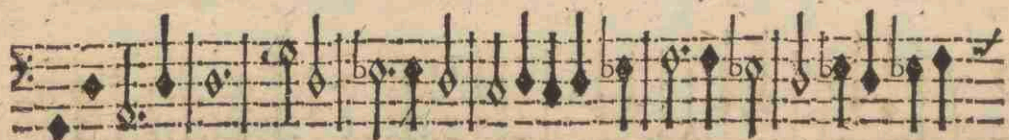
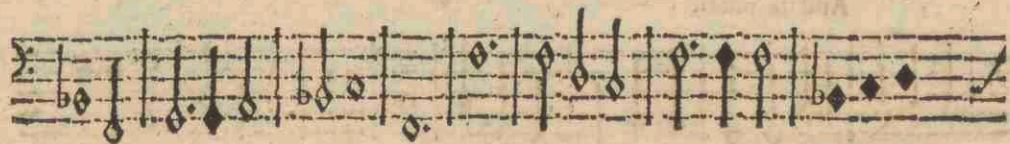
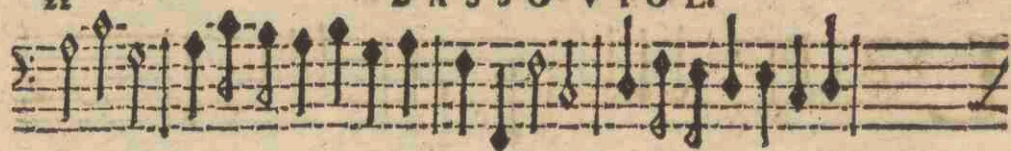
**L** 

Audate pueri.

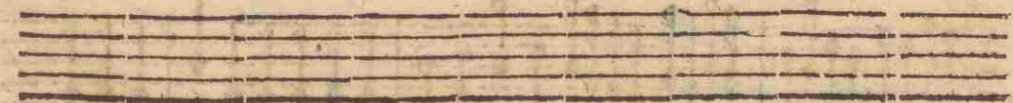
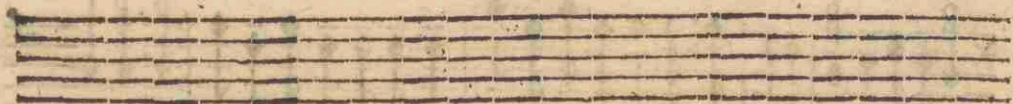
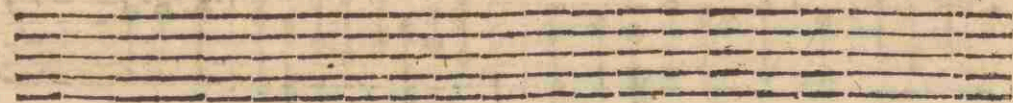
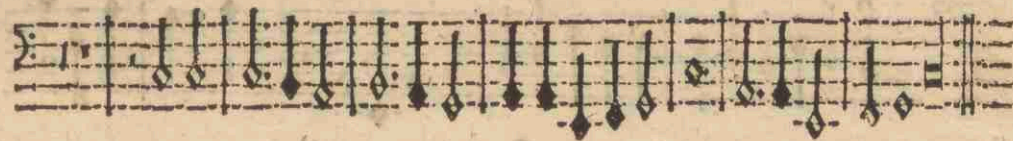
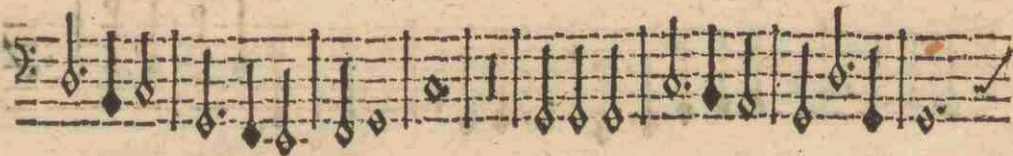
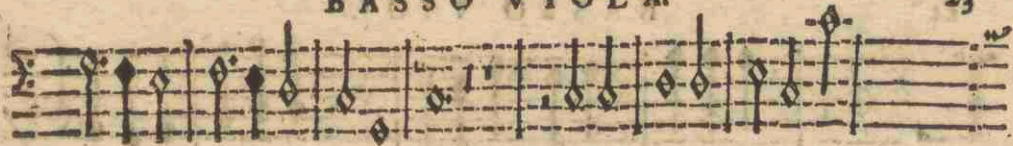




## BASSO VIOLI:

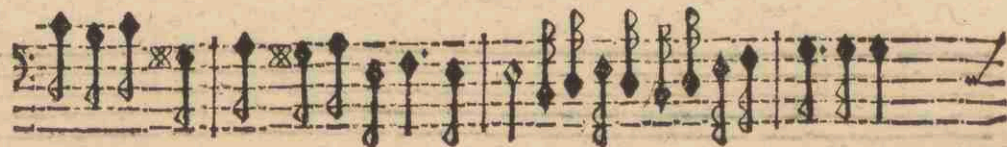
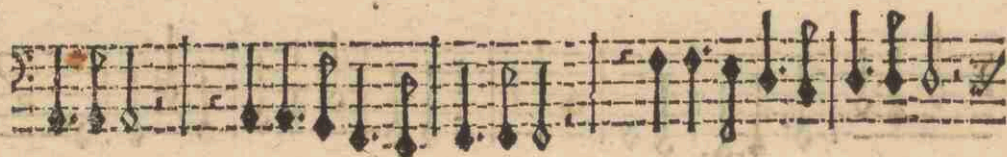


BASSO VIOLA

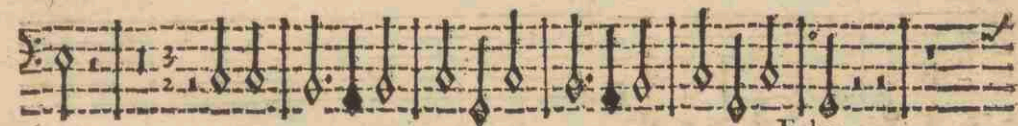
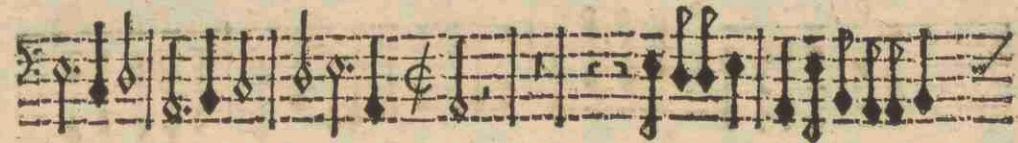
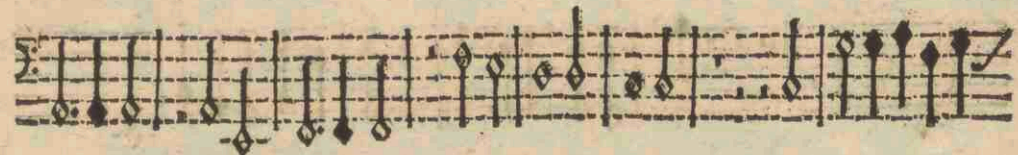




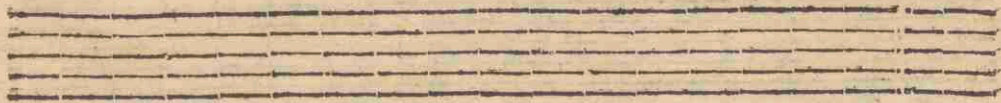
Auda Jerusalelem.



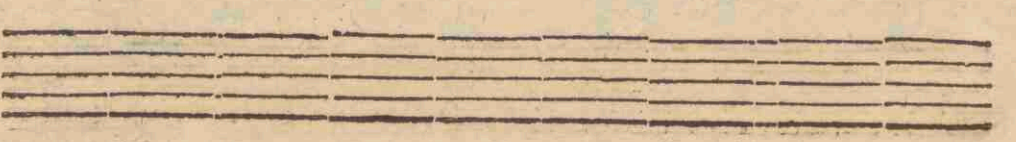
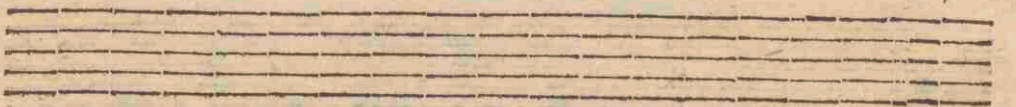
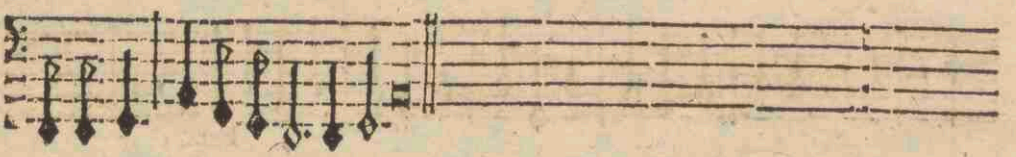
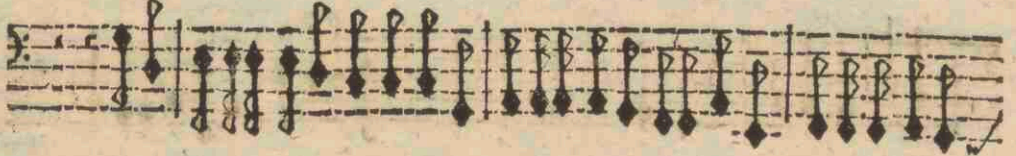
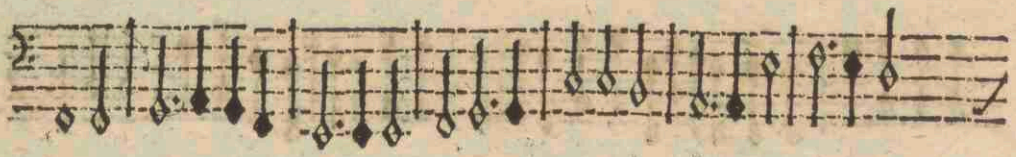
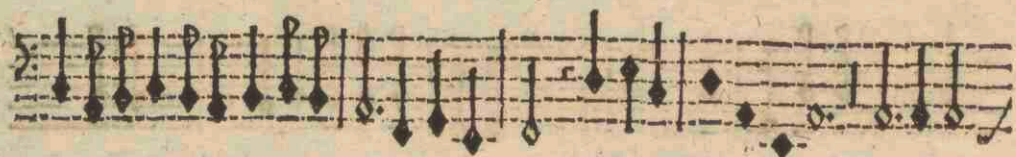
BASSO VIOLA



Echo



BASSO VIOLA



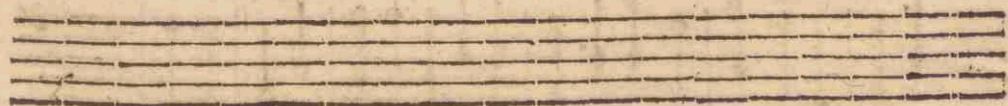
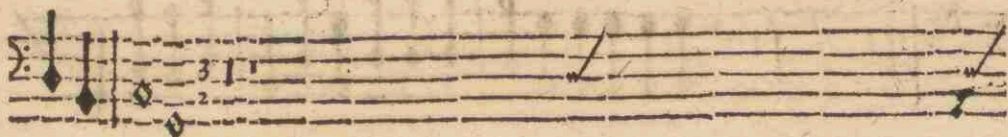
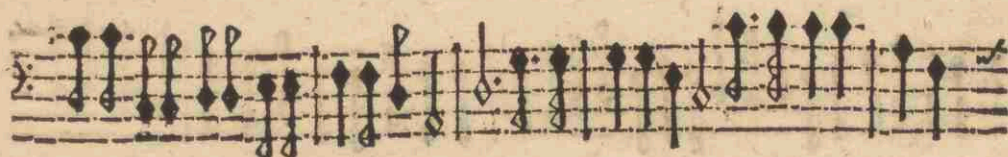
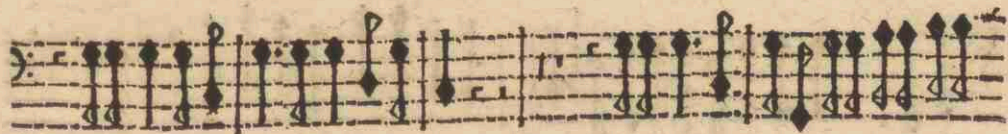
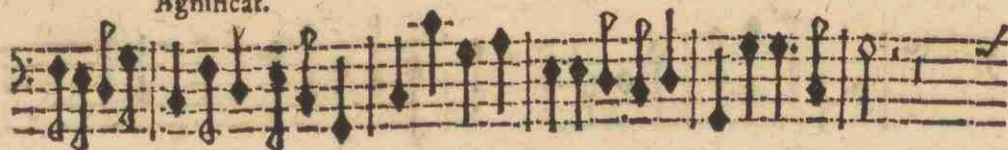
BASSO VIOLA:

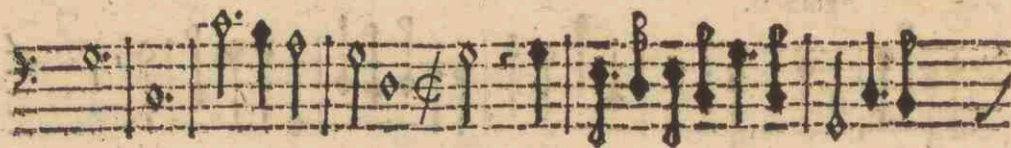
27

M

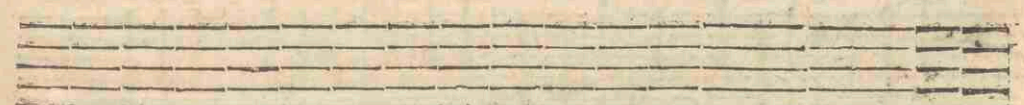
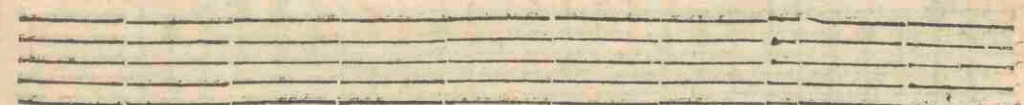
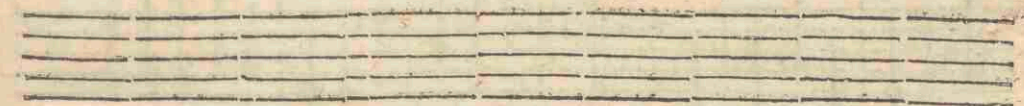
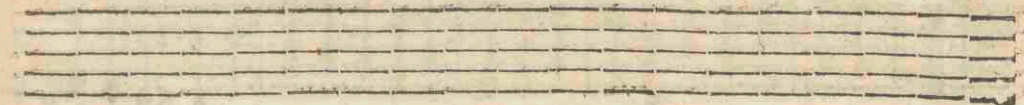
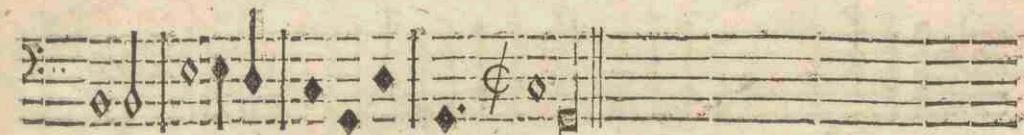
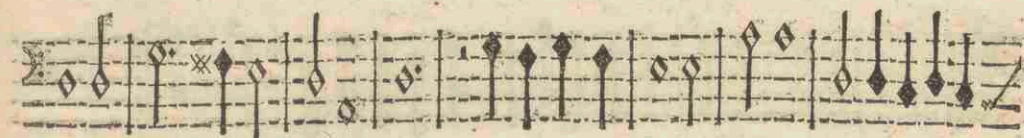
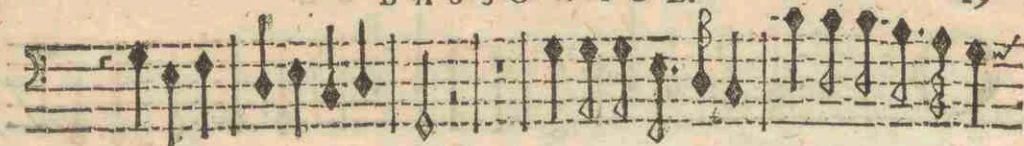


Agnificat.





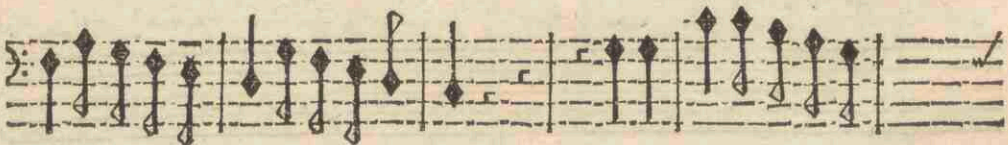
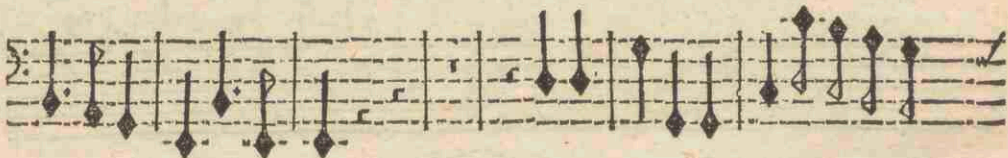
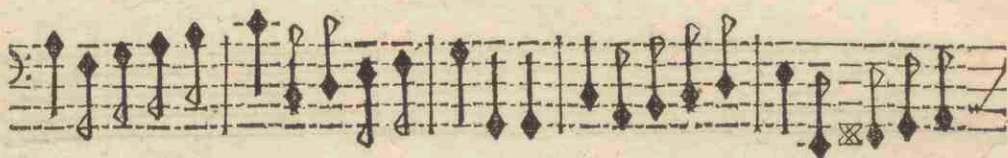
BASSO VIOL.







Verture.



Forte Lente Forte

BASSO VIOL.

31

The first staff of music begins with a treble clef and a common time signature. It contains several measures of music, including a half note followed by a quarter note, and a series of eighth notes. The word "Lente." is written below the first few measures, and "Suave" is written below the next few measures. The staff ends with a double bar line and a repeat sign.

The second staff of music continues the piece with a series of eighth notes and quarter notes. It features a flat sign (b) above a note in the middle of the staff. The staff concludes with a double bar line and a repeat sign.

The third staff of music continues with a sequence of eighth notes and quarter notes. It includes a measure with a cross symbol (x) above a note. The staff ends with a double bar line and a repeat sign.

The fourth staff of music continues with a sequence of eighth notes and quarter notes. The staff ends with a double bar line and a repeat sign.

The fifth staff of music contains a few final notes, including a half note and a quarter note, followed by a double bar line and a repeat sign.

FINIS.

Six empty musical staves are arranged at the bottom of the page, below the "FINIS." text.



# I N D E X.

Cupio dissolvi	à Tenore vel Cant. solo & 5. Instr.	3
Adoro te	à Canto solo & 5. Instr.	5
Heu mihi	à Canto solo & 5. Instr.	7
Resonate	à 2. Cant. & 5. Instr.	8
Quemadmodum	à 2. Alt. Ten. & 5. Instr.	10
Domine non sum dignus	à 2. Alt. Ten. & 5. Instr.	12
Animæ fideles	à 3. Cant. Alt. Barit. & 4. Instr.	14
O diem gloriæ	à 4 Cant. Alt. Ten. Bass. & 3. Instr	16

## P S A L M I.

Confitebor tibi Domine	à 4. Cant. Alt. Ten. Bass. & 3. Instr.	18
Laudate pueri	à 4. Cant. Alt. Ten. Bass. & 3. Instr.	21
Lauda Ierusalem	à 4. Cant. Alt. Ten. Bass. & 3. Instr.	24
Magnificat	à 4 Cant. Alt. Ten. Bass. & 3. Instr.	27
Overture	à 5. Instrumentis.	30

## F I N I S.

